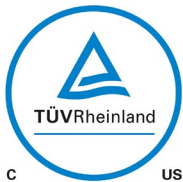


D C : 15

Owner's Manual

Model Number: MDC1500



LAGUNA

Laguna Tools
744 Refuge Way, Suite 200
Grand Prairie, TX 75050
lagunatools.com

Scope of This Manual

This manual outlines the basic procedures for unpacking, assembly, operating, maintenance, and troubleshooting for the DC|15 dust collector.

For detailed instructions and videos, please go to www.lagunatools.com. Refer to www.lagunatools.com for the latest manual revision.

Customer Service

For technical support, please contact Laguna Tools Customer Service by phone 1-800-332-4094.

In the space provided, record the serial number, model number, and install date of the machine.

Serial No.	
Model No.	
Install Date:	

Copyright © 2025

Laguna Tools, Inc.

ALL RIGHTS RESERVED

This document contains material protected under International and Federal Copyright Laws and Treaties. Any unauthorized reprint or use of this material is prohibited. No part of this document may be reproduced or transmitted in any form or by any means, electronic or mechanical, including photocopying, recording, or by any information storage and retrieval system without express written permission from the author/publisher. LAGUNA® and the LAGUNA Logo® are the registered trademarks of Laguna Tools, Inc.

DISCLAIMER

Laguna Tools is not responsible for errors or omissions. Specifications subject to change. Machines may be shown with optional accessories.

Revision 01 V04 (04/10/2026)

Table of Contents

1.0	General Information and Safety	5
1.1	Overview	5
1.2	Safety Signs and Callouts	5
1.3	Proposition 65 Warning of Harmful Exposure	6
1.4	Intended Use	6
1.5	Safety Information.....	6
1.6	Dust Collector Safety Information.....	15
1.7	Additional safety for dust collectors	18
2.0	Definitions.....	20
3.0	Specifications	21
3.1	Dimensional Measurements	21
4.0	Setup and Assembly	22
4.1	Machine Placement	22
4.2	Packaging Contents.....	24
4.3	Tools Required for Assembly	26
4.4	Assembling the Machine	26
5.0	Test Run and Operation.....	33
6.0	Maintenance.....	34
7.0	Troubleshooting	35
8.0	Exploded Parts View and Parts Lists	37
9.0	Warranties.....	39

1.0 General Information and Safety

1.1 Overview

SAVE THIS MANUAL. Keep this manual for the safety warnings, precautions, assembly, operating, inspection, and maintenance procedures. Read this Owner's Manual in its entirety prior to assembly or operation. Refer to www.lagunatools.com for the latest manual revision.

Read and understand all warnings and operation instructions before using any tool or equipment. Always follow basic safety precautions to reduce the risk of personal injury. Improper operation, maintenance, or modification of tools or equipment could result in serious injury or property damage. Laguna Tools equipment is designed for specific and limited applications. This product should not be modified nor used for any application other than its intended use.

PERSONAL SAFETY IS THE RESPONSIBILITY OF THE OPERATOR.

1.2 Safety Signs and Callouts

Safety signs and callouts draw attention to potential hazards during machine operation. This Owner's Manual uses the following callouts to indicate the importance of each safety message.



⚠ DANGER

An imminently hazardous situation which, if not avoided, will result in death or serious injury.



⚠ WARNING

A potentially hazardous situation which, if not avoided, could result in death or serious injury.



⚠ CAUTION

A potentially hazardous situation which, if not avoided, may result in minor or moderate injury.



NOTE

A helpful tip from Laguna Tools technical staff.

1.3 Proposition 65 Warning of Harmful Exposure

Some dust created by sanding, sawing, grinding, drilling, machining, and other construction activities contains chemicals known to the state of California to cause cancer, birth defects, or other reproductive harm. Some examples of these chemicals are:

- Lead from lead-based paint.
- Crystalline silica from bricks, cement, and other masonry products.
- Arsenic and chromium from chemically treated lumber.



Fire Warning

Use extreme caution when working with flammable materials such as wood or acrylic, as they are more volatile than other materials.

Keep the machine clean and follow the maintenance schedule.

Always have a fire extinguisher ready to extinguish a fire.

Never leave the machine running unattended.

The tools sold by Laguna Tools are safe when used properly, as described by the American National Safety Institute, the UL Standards of safe tool use, and the IEC standards of safe tool use. Laguna Tools is in no way responsible for injury or death that occurs while using this product.

The risk of exposure varies depending on frequency of use. To reduce exposure to these chemicals, work in a well-ventilated area and work with approved safety equipment, such as face or dust masks that are specifically designed to filter out microscopic particles. For more information go to <https://www.p65warnings.ca.gov/>.

1.4 Intended Use

This dust collector is **only** intended for collecting dry wood dust and chips from woodworking machines. **Do not** use this dust collector to collect metal, dirt, pebbles, drywall, asbestos, lead paint, silica, liquids, aerosols, or any flammable, combustible, or hazardous materials. Do not use this machine for anything other than its intended use.

1.5 Safety Information

The machine is an electrical appliance and precision machine. Please read and understand the entire owner's manual before attempting assembly or operation. Read and understand the

DC|15 Owner's Manual

warnings posted on the machine and in this manual. Failure to comply with all warnings may cause serious personal injury or damage to the machine.

The machine is designed and intended for use by properly trained and experienced personnel only. Personnel who are not familiar with the correct and safe operation of the machine should not operate the machine until properly trained.

1. Never operate machinery under the influence of drugs or alcohol, when tired, or when distracted.
2. Stay alert at all times while operating the machine.
3. Always wear safety glasses and hearing protection.
4. Do not wear clothing, apparel, or jewelry that can become entangled in moving parts. Always tie back or cover long hair. Wear non-slip footwear to reduce the risk of slipping and losing control or accidentally contacting cutting tool or moving parts.
5. Never stand on the machine. Serious injury may occur if the machine is tipped or if the cutting tool is unintentionally contacted.
6. Know where the emergency stop switch is located.
7. Perform daily inspection of the machine for damaged, loose, or improperly adjusted parts or any condition that could affect safe operation. For your own safety, do not operate the machine with damaged parts.
8. Use the machine only in clean areas free from excessive moisture or flammable objects.
9. Keep the working area clean and ensure adequate lighting is available.
10. Cables and cords should be inspected regularly.
11. Do not attempt to exceed the limits of the machine.
12. Keep the machine, electrical cabinet, and cables away from excessive heat, flammable substances, and sharp objects.
13. Keep the machine, electrical cabinet, and surrounding area clear of obstructions and free from excessive moisture.
14. Safety Signs should be attached to places that are easy to spot.
15. Disconnect power to all system components when not in use, when changing accessories, and before servicing. Remove the switch keys or lock-out the machine to prevent unauthorized use and child-proof the workshop.
16. Exercise care with machine controls and around keypad to avoid unintentional start-up.

17. The machine must be level. Level the machine if the ground is uneven.
18. Ensure the keys and adjusting wrenches have been removed and all the nuts and bolts are secured.
19. Keep cutting tools clean and sharp.
20. Do not use dull, gummy, or cracked cutting tools.
21. Lubricate and change accessories when necessary.
22. Keep controls clean and dry.
23. Consult the Owner's Manual or contact Laguna Tools for recommended accessories. Using improper accessories will increase the risk of serious injury or damage.
24. Keep a copy of this manual for future reference.
25. All motion parameters have been set up by Laguna Tools. If any modifications are required, please have a qualified operator perform the changes.

1.5.1 Shop Environment

1. Verify the floor can bear the weight of the machine and workpieces.
2. Ensure the floor around the machine is clean and free of scrap material, oil, and grease.
3. Do not lean material against the gantry, guide rails, or table.
4. Support the weight of the dust hose attached to the dust shoe (optional) accessory to prevent the weight of the hose from dislodging the dust shoe. Ensure that there is sufficient slack in the dust collection hose to allow the spindle to cover the entire work area.
5. Position the machine away from overhead pipes and plumbing fixtures to prevent condensation from dripping on to the spoil boards and control system components.
6. Locate the machine away from sinks, faucets, or other water supplies or storage to prevent splash-out that can damage the spoil boards and control system components.
7. Provide adequate room between this machine and other machines in the shop to reduce the chance of accidental jarring when transporting lumber or other heavy materials through the shop and while materials are being worked on other machines.
8. Verify there is adequate space between machines to allow for the possibility the workpiece will extend over the end of the machine.
9. Ensure that the lighting your machine is placed under is sufficient to safely perform regular operation and maintenance. Any glares, shadows, or strobe lighting which may distract or prevent the operator from safely operating the machinery should be removed from the working area.
10. Store cutting tools in a dry location and prevent contact to preserve the cutting edge.

1.5.2 Health and Safety

1. Always wear approved personal health and safety equipment as indicated for the materials and type of operations that will be performed. These should include face, eye, respiratory, hearing, and body safety protection devices. Wear safety glasses/face shield and ear protectors (plugs or muffs) even during short periods of operation.
2. Before operating this machine: remove all hand, wrist, or neck jewelry and push sleeves up over the elbows. Do not wear loose clothing which may become caught in the machine and confine long hair. Non-slip footwear or anti-skid floor strips are recommended.
3. Use a dust mask or other safeguards to avoid inhaling dust generated from wood products. Install dust collection equipment consistent with shop ventilation practices and budget. Remove dust and debris from the floor frequently to prevent slipping. Drilling, sawing, sanding, or machining wood products generates wood dust and other substances known to the State of California to cause cancer. Wood products also emit chemicals known to the State of California to cause birth defects or other reproductive harm (California Health and Safety Code Section 56).
4. In addition to other health hazards, dust from wood and other materials is flammable. Do not operate welding, wood burning, smelting, soldering, or other high-heat tools on the machine or vicinity.
5. Do not operate this machine while tired or under the influence of drugs, alcohol, or any medications.

1.5.3 Grounding Instructions



This machine must be grounded while in use to protect the operator from electric shock.

-
1. All grounded, cord-connected machines: In the event of a malfunction or breakdown, grounding provides a path of least resistance for electric current to reduce the risk of electric shock. This machine is equipped with an electric cord having an equipment-grounding conductor and a grounding plug. The plug must be plugged into a matching outlet that is properly installed and grounded in accordance with all local codes and ordinances. Do not modify the plug provided - if it will not fit the outlet, have the proper outlet installed by a qualified electrician. Improper connection of the equipment-grounding conductor can result in risk of electric shock. The conductor with insulation having an outer surface that is green with or without yellow stripes is the equipment-grounding conductor. If repair or replacement of the electric cord or plug is necessary, do not

connect the equipment-grounding conductor to a live terminal. Check with a qualified electrician or service personnel if the grounding instructions are not completely understood, or if in doubt as to whether the machine is properly grounded. Use only 3-wire extension cords that have 3-prong grounding type plugs and matching 3-conductor receptacles that accept the machine's plug, as shown in Fig. A. Repair or replace damaged or worn cord immediately.

2. Grounded, cord-connected machines intended for use on a supply circuit having a nominal rating less than 150 volts: If the machine is intended for use on a circuit that has an outlet that looks like the one illustrated in Fig. A, the machine will have a grounding plug that looks like the plug illustrated in Fig. A. A temporary adapter, which looks like the adapter illustrated in Fig. B, may be used to connect this plug to a matching 2-conductor receptacle as shown in Fig. B if a properly grounded outlet is not available. The temporary adapter should be used only until a properly grounded outlet can be installed by a qualified electrician. The green-colored rigid ear, lug, and the like, extending from the adapter is used, it must be held in a place with a metal screw. **NOTE:** In Canada, the use of a temporary adapter is not permitted by the Canadian Electric Code.



In all cases, make certain that the receptacle in question is properly grounded. If you are not sure, have a qualified electrician check the receptacle.

1.5.4 Electrical Safety

1. Verify the switch is in the OFF position before connecting the machine to the power supply.
2. Verify the machine is properly grounded and the circuit is protected with a fuse or circuit breaker in accordance with local codes. Install a separate circuit if necessary to limit power loss when multiple machines in the shop are operating simultaneously. If necessary, place a cover on the outlet to prevent accidental disconnection.
3. Verify all machine adjustments or maintenance with the machine unplugged from the power source.
4. Follow effective lockout procedures to reduce the risk from high voltage wires and components and prevent accidental operation.
5. Do not operate in a damp or wet location or exposed to rain, fog, or snow.
6. Keep the electrical cord away from sharp edges, heat or moving parts, and do not store materials on top of it. Position the cord so it will not become a tripping hazard.

DC15 Owner's Manual

7. While the use of an extension cord is discouraged, if it is necessary, verify the cord is in good condition, meets the current requirements, and is located so as not to present a tripping hazard.

MINIMUM GAUGE EXTENSION CORD RECOMMENDED SIZES FOR USE WITH STATIONARY ELECTRIC MACHINES			
Ampere Rating	Volts	Total Length of Cord in Feet	Gauge of Extension Cord
0-6	120	up to 25	18 AWG
		25-50	16 AWG
		50-100	16 AWG
		100-150	14 AWG
		100-150	14 AWG
6-10	120	up to 25	18 AWG
		25-50	16 AWG
		50-100	14 AWG
		100-150	12 AWG
10-12	120	up to 25	16 AWG
		25-50	16 AWG
		50-100	14 AWG
		100-150	12 AWG
12-16	120	up to 25	14 AWG
		25-50	12 AWG
		GREATER THAN 50 FEET NOT RECOMMENDED	

MINIMUM GAUGE EXTENSION CORD RECOMMENDED SIZES FOR USE WITH STATIONARY ELECTRIC MACHINES				
Ampere Rating	Volts	Total Length of Cord in Feet	Gauge of Extension Cord	
0-6	240	up to 50	18 AWG	
		50-100	16 AWG	
		100-200	16 AWG	
		200-300	14 AWG	
6-10	240	up to 50	18 AWG	
		50-100	16 AWG	
		100-200	14 AWG	
6-10	240	200-300	12 AWG	
		240	up to 50	16 AWG
			50-100	16 AWG
100-200	14 AWG			
10-12	240	200-300	12 AWG	
12-16	240	up to 50	14 AWG	
		50-100	12 AWG	
		GREATER THAN 100 FEET NOT RECOMMENDED		

1.5.5 Additional Safeguards

1. Remove and store adjusting keys and wrenches before turning on the power. If necessary for visibility, apply safety markings to adjusting wrenches and keys.
2. Install safety guards consistent with general shop safety practices. Always keep safety guards in place when the machine is in use. If removed for maintenance purposes, use extreme caution, and replace the guards immediately after completion of maintenance.
3. Check damaged parts immediately. Before further use of the machine, a guard or other part that is damaged should be carefully checked to determine that it will operate properly and perform its intended function.
4. Keep visitors a safe distance from the work area. Keep children away.

5. Control liquids in the shop to limit the possibility of spillage that can damage the machine and potentially cause damage or personal injury from electric shock or fire. Never use the table to apply or dry finishes.

1.5.6 Maintenance

1. Disconnect the machine from power when performing any maintenance.
2. Establish a weekly and monthly maintenance checklist and follow it diligently.
3. Routine maintenance should include periodic checks for alignment of moving parts, looseness, or binding of moving parts, worn or bare wires, breakage of parts, skewed mounting, and any other conditions that may affect its operation or cause injury. Analyze breakage or damage to determine the cause and take appropriate remedial action.
4. Do not operate the machine if a component of the control system is damaged. It should be properly repaired or replaced before use.
5. Follow instructions for lubricating and changing accessories.
6. Store maintenance tools and supplies nearby, consistent with the shop maintenance practices and resources.

1.5.7 Operational Practice

1. Never leave the machine running unattended. Always be in close reach of the emergency stop button.
2. Turn off the power and do not leave the machine until it comes to a complete stop.
3. Avoid pinch points and entanglement hazards. Keep hands and clothing away from any moving objects, rotating/moving cutting tools, ball screws, bearings, gantries, guide rails, and any other hazards while in operation.
4. Use the right tool at the correct speed and feed rate. Do not force a tool or attachment to do a job for which it was designed. The right tool will do the job better and more safely.
5. Do not touch a cutting tool immediately after use. It will be hot and may cause skin burns. Exercise caution when handling any cutting tool and accessories. If the cutting tool is hot, keep a heat-resistant glove or oven mitt on hand for this purpose.
6. Do not lay a hot cutting tool on its side.
7. Use recommended accessories; improper accessories may be hazardous.
8. Do not use dull, gummy, or damaged cutting tools such as blades, bits, etc. Keep cutting tools clean and sharp for the best and safest performance.

DC|15 Owner's Manual

9. Turn off the machine before cleaning. Use a vacuum, brush, or compressed air to remove chips or debris. Do not use bare hands.
10. Do not climb or stand on the machine. Serious personal injury and costly damage could occur if the machine tips over or any component is dislodged.
11. Remove loose items and unnecessary workpieces from the table before starting the machine.
12. Inspect the material of the workpiece to detect any defects that may result in ejection of large pieces of scrap.
13. Verify the workpiece is free from nails, hardware, or other foreign objects.

1.6 Dust Collector Safety Information



Basic precautions should always be followed when using your dust collector. To reduce the risk of injury, electrical shock or fire, comply with the safety rules listed below.

1. READ and understand the instruction manual before operating the dust collector.
2. DO NOT leave the dust collector plugged into the electrical outlet. Unplug dust collector from outlet when not in use and before servicing, changing bags, unclogging and cleaning.
3. ALWAYS turn the power switch "OFF" before unplugging the dust collector.
4. WARNING: TO REDUCE THE RISK OF ELECTRICAL SHOCK do not use outdoors or on wet surfaces. Use for dry pickup only!
5. FOLLOW all electrical and safety codes, including the National Electric Code (NEC) and the Occupational Safety and Health Regulations (OSHA). All electrical connections and wiring should be made by qualified personnel only.
6. DO NOT use the dust collector to pick up flammable or combustible liquids, such as gasoline. NEVER use the dust collector near any flammable or combustible liquids.
7. USE the dust collector to pick up wood materials only. DO NOT use the dust collector to pick up metal shavings, dust, water, or parts.
8. NEVER use the dust collector to dissipate fumes or smoke. NEVER pick-up anything that is burning or smoking, such as cigarettes, matches or hot ashes.
9. USE only as described in this manual.
10. DO NOT pull the dust collector by the power cord. NEVER allow the power cord to come in contact with sharp edges, hot surfaces, oil or grease.
11. DO NOT unplug the dust collector by pulling on the power cord. ALWAYS grasp the plug, not the cord.
12. DO NOT handle the plug or dust collector with wet hands.
13. REPLACE a damaged cord immediately. DO NOT use a damaged cord or plug. If the dust collector is not operating properly, or has been damaged, left outdoors or has been in contact with water, return it to an Authorized Service Center for service.
14. DO NOT use the dust collector as a toy. DO NOT use near or around children.

DC|15 Owner's Manual

15. DO NOT insert fingers or foreign objects into the dust intake ports. Keep hair, loose clothing, fingers, and all body parts away from openings and moving parts of the dust collector.
16. DO NOT use the dust collector without a filter bag and dust collection bag in place and properly secured.
17. DO NOT operate the dust collector with unused dust intake ports uncapped. ALWAYS cover exposed dust intake ports.
18. PERIODICALLY INSPECT dust and filter bags for any cuts, rips or tears. NEVER operate the dust collector with a damaged bag or vacuum hose.
19. The dust collector is designed for home use or light commercial duty ONLY!
20. CONNECT dust collector to a properly grounded outlet only. See Grounding Instructions
21. CONNECT dust collector to a properly grounded outlet only. See Grounding Instructions
22. Do not leave appliance when plugged in. Unplug from outlet when not in use and before servicing.
23. Do not use outdoors or on wet surfaces
24. Do not allow to be used as a toy. Close attention is necessary when used by or near children.
25. Use only as described in this manual. Use only manufacturer's recommended attachment.
26. This Dust Collector is designed and intended for use by properly trained and experienced personnel only. If you are not familiar with the proper and safe operation of this type of dust collector, do not use until proper training and knowledge have been obtained.
27. Do not use this machine for other than its intended use. If used for other purposes, LAGUNA TOOLS INC., disclaims any real or implied warranty and holds itself harmless from any injury that may result from that use.
28. Always wear approved safety glasses/face shields while using this machine.
29. Before operating this dust collector, remove tie, rings, watches and other jewelry, and roll sleeves up past the elbows. Remove all loose clothing and confine long hair. Non-slip footwear or anti-skid floor strips are recommended. Do not wear gloves.
30. Wear ear protectors (plugs or muffs) during extended periods of operation.
31. Do not operate this machine while tired or under the influence of drugs, alcohol, or any medication.

DC15 Owner's Manual

32. Make certain the switch is in the OFF position before connecting the machine to the power source.
33. Make certain the machine is properly grounded.
34. Make all machine adjustments or maintenance with the machine unplugged from the power source.
35. Form a habit of checking to see that all extra equipment such as adjusting keys, wrenches, scrap, stock, and cleaning rags are removed away from the machine before turning on.
36. Keep safety guards in place at all times when the machine is in use. If removed for maintenance purposes, use extreme caution, and replace the guards immediately when maintenance is complete.
37. Make sure the dust collector is on a flat even surface and the wheels locked in place before use.
38. Check damaged parts. Before further use of the machine, a guard or other part that is damaged should be carefully checked to determine that it will operate properly and perform its intended function. Check for alignment of moving parts, binding of moving parts, breakage of parts, mounting and any other conditions that may affect its operation.
39. A guard or other part that is damaged should be properly repaired or replaced.
40. Provide for adequate space surrounding work area and non-glare, overhead lighting.
41. Keep the floor around the machine clean and free of scrap material, oil, and grease.
42. Keep visitors a safe distance from the work area. Keep children away.
43. Child proof your workshop with padlocks, master switches or by removing starter keys.
44. Give your work undivided attention. Looking around, carrying on a conversation and "horse-play" are careless acts that can result in serious injury.
45. Maintain a balanced stance at all times so that you do not fall or lean against the dust collector. Do not overreach or use excessive force to perform any machine operation.
46. Use the right tool at the correct speed and feed rate. Do not force a tool or attachment to do a job for which it was not designed. The right tool will do the job better and safer.
47. Use recommended accessories; improper accessories may be hazardous.
48. Maintain machinery with care. Follow instructions for lubricating and changing accessories.

49. Turn off the machine before cleaning. Use a brush or compressed air to remove dust or debris — do not use your hands.
50. Do not stand on the machine. Serious injury could occur if the machine tips over.
51. Never leave the machine running unattended. Turn the power off and do not leave the machine until it comes to a complete stop.

1.7 Additional safety for dust collectors

Hazardous dust: Dust created while using machinery may cause cancer, birth defects, or long-term respiratory damage. Be aware of dust hazards associated with each work piece material, and always wear a NIOSH-approved respirator to reduce your risk.

Dust allergies: Dust from certain woods may cause an allergic reaction in people and animals. Make sure you know what type of wood dust you will be exposed to in case there is a possibility of an allergic reaction.

Wear respirator: Fine dust that is too small to be caught in the filter will be blown into the ambient air during operation. Always wear a NIOSH-approved respirator during operation and for a short time after to reduce your risk of permanent respiratory damage.

Emptying dust: When emptying dust from the collection container, wear a respirator and safety glasses. Empty dust away from ignition sources and into an approved container.

Disconnecting power supply: Turn the switch off, disconnect the dust collector from the power supply, and allow the impeller to come to a complete stop before leaving the machine unattended or doing any service, cleaning, maintenance, or adjustments.

Suspended dust particles and ignition sources: Do not operate the dust collector in areas where explosion risks are high. Areas of high risk include, but are not limited to, areas near pilot lights, open flames, or other ignition sources.

Fire suppression: Only operate the dust collector in locations that contain a fire suppression system or have a fire extinguisher nearby.

Impeller hazards: Do not place your hands or tools near the open inlet during operation for any reason. The powerful suction could easily cause accidental contact with the impeller, which will cause serious personal injury or damage to the machine. Always keep small animals and children away from open dust collection inlets.

Avoiding sparks: Do not allow steel or rocks to strike the impeller—this may produce sparks. Sparks can smolder in wood dust for a long time before a fire is detected. If you accidentally cut into wood containing tramp metal (nails, staples, spikes, etc.), immediately turn off the dust

DC|15 Owner's Manual

collector, disconnect it from power, and wait for the impeller to stop—then empty the collection container into an approved airtight metal container.

Operating location: To reduce respiratory exposure to fine dust, locate permanently installed dust collectors away from the working area, or in another room that is equipped with a smoke detector. Do not operate the dust collector in rainy or wet locations—exposure to water may create a shock hazard or decrease the life of the machine.

Static electricity: Plastic dust lines generate high amounts of static electricity as dust chips pass through them. Although rare, sparks caused by static electricity can cause explosions or fire. To reduce this risk, make sure all dust lines are thoroughly grounded by using a grounding wire.

Regular cleaning: Regularly check/empty the collection bags or drum to avoid the buildup of fine dust that can increase the risk of fire. Make sure to regularly clean the surrounding area where the machine is operated— excessive dust buildup on overhead lights, heaters, electrical panels, or other heat sources will increase the risk of fire.

2.0 Definitions

Static Pressure – The resistance to airflow in a dust collection system, measured in inches of water. Higher static pressure means more resistance.

Cubic Feet per Minute (CFM) – The volume of air moved by the dust collector per minute. Higher CFM indicates better performance.

Micron – A unit of measure for dust particles. One micron is one-millionth of a meter. Dust collectors often specify the smallest particle size they can filter .

Air Velocity – The speed of air moving through the ducts, measured in feet per minute (FPM). Proper air velocity ensures efficient dust collection.

Blast Gate – A gate used to control airflow to different parts of the dust collection system. It helps in directing suction to where it's needed most.

Filter Bag – A fabric bag that captures dust particles while allowing air to pass through. The efficiency of the filter bag is crucial for clean air.

Cyclone Separator – A device that uses centrifugal force to separate larger dust particles from the air before they reach the filter.

Drop – A vertical duct that connects the main duct to a tool. It usually includes a wye, elbow, vertical pipe, and blast gate.

HEPA Filter – High-Efficiency Particulate Air filter that captures 99.97% of particles 0.3 microns and larger. It's used for fine dust filtration.

3.0 Specifications

Specification Table for DC 15 Dust Collector	
Electrical Rating	120/240 Volt AC, 60Hz, 11.5/5.7A (prewired 120V)
Motor	1.5 HP
Collection Bag Capacity	5.3 cu. ft.
Filter Efficiency	98% at 2 Micron
Inlet	Dual 4"
Air Flow @ 4" Port	1100 CFM
Net Weight	127 pounds
Gross Weight	144 pounds
Dimension (L x W x H) [inches]	41" x 20" x 67" (1041mm x 508mm x 1709mm)

3.1 Dimensional Measurements



4.0 Setup and Assembly

Please carefully read and understand all setup and assembly instructions before beginning this procedure.

WARNING

This machine is heavy. Seek assistance from an experienced professional if you have any doubt about the following unboxing or set up procedures.

DO NOT attempt any procedure that you feel is unsafe or you believe you do not have the physical capability of achieving.

DANGER

DO NOT plug in the machine until setup and assembly is complete.

4.1 Machine Placement

When unpacking the machine, separate all enclosed items from the packing materials and inspect each for damage. Save the packaging materials until all issues concerning missing or damaged items have been resolved.

Select the area where the machine will be operated. The physical environment where the machine is located is important to safe assembly and operation. Before removing the machine from its packaging consider the weight load, electrical installation requirements, lighting, dust collection, and space allocation available for the machine and accompanying materials.

For optimal operation, ensure that the machine is located in a dry environment free from excessive moisture, extreme weather conditions, hazardous chemicals, or airborne abrasives.

Guidelines for properly placing the machine follow:

1. There should be sufficient area around the machine to facilitate easy access to the workpiece, perform maintenance, and provide a safe exit path in the event of an emergency.
2. Select a solid level floor rated to hold the weight of the machine. Laguna Tools recommends concrete flooring. Consult a licensed and experienced professional if in doubt.

DC|15 Owner's Manual

3. Locate the machine near a power source
4. Allow an area for the storage of workpiece materials, finished products, and tools.
5. Leave ample space around the machine for the operator to handle both the equipment and the materials being cut.
6. Leave enough space around the machine to open or remove doors/covers as required by the maintenance described in the Owner's Manual.

NOTE

All shipping related claims for loss or damaged goods must be made to Laguna Tools within 24 hours of delivery.

Contact Laguna Tools customer service department to make claims for any damaged items/parts.

The original packaging is required to return damaged goods within the warranty period.

WARNING

This machine is heavy. Seek assistance from an experienced professional if you have any doubt about the following unboxing or set up procedures.

DO NOT attempt any procedure that you feel is unsafe or you believe you do not have the physical capability of achieving.

CAUTION

When determining location, verify there is sufficient room around the machine. If you cannot fully open all the doors/cabinets around the machine, it cannot be installed or serviced in the future if necessary.

4.2 Packaging Contents

A (1x) Two Way dust port inlet



B (1x) Long Dust Hose



C (3x) Leg



D (1x) Base Plate



E (1x) Filter Cartridge Assembly



F (1x) Dust Collection Bag



G (4x) Caster
2 have wheel locks



H (1x) DC:15 Sign



J (1x) Motor/Impeller



K (1x) Short Dust Hose



L (1x) Outlet Protective Mesh



M (1x) Rubber Foot



DC|15 Owner's Manual

N (1x) Filter Cleaning Paddle



O (1x) Flapper cleaner handle



P (1x) Long Hose Clamp



Q (2x) Short Hose Clamp



R (1x) Filter



S (1x) Band Clamp



T (1x) Reducer



U Hardware Bag (not shown)

Remove all contents from the shipping boxes. Do not discard the carton or packing materials until the assembly is complete. Accessories commonly ship inside the machine or stand packaging and can be easily overlooked. There may be extra packing contents or hardware that is included.

4.3 Tools Required for Assembly

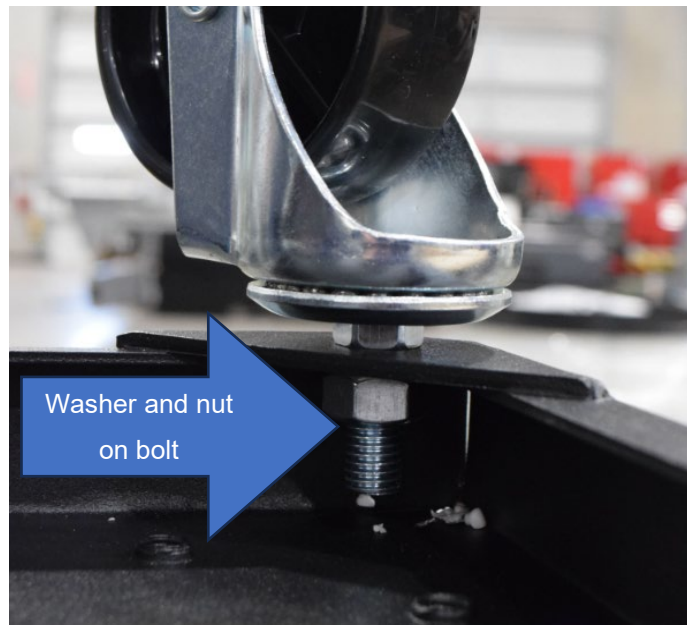
- 10mm wrench
- 13mm wrench
- 16mm Wrench
- Phillips screwdriver
- (optional) Drill with Phillips head bit

4.4 Assembling the Machine

 **CAUTION**

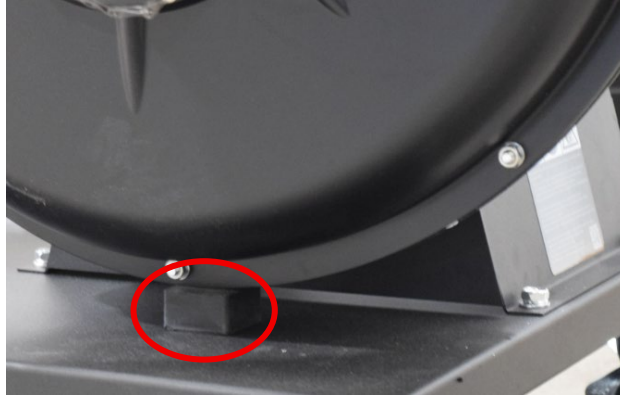
Laguna recommends using two people for assembly. Some components may be heavy and/or uneven in weight distribution.

1. Remove all packaging contents and set them to the side.
2. Remove the bag retainer ring from the bottom of the inside the filter cartridge assembly (E).
3. Attach the four casters (G) to the base plate (D) and place washer and nut on the other side.
Attach the casters with the wheel locks on the motor side. Tighten with 16mm wrench.
Flip the base upside down for easier access.

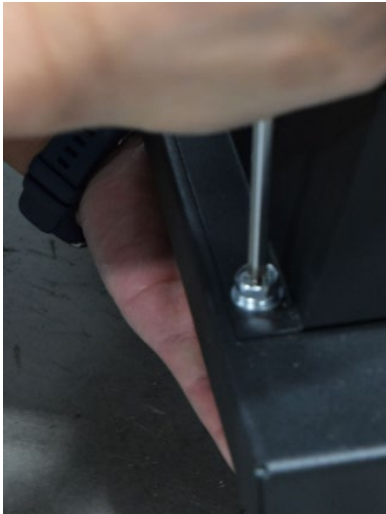


DC15 Owner's Manual

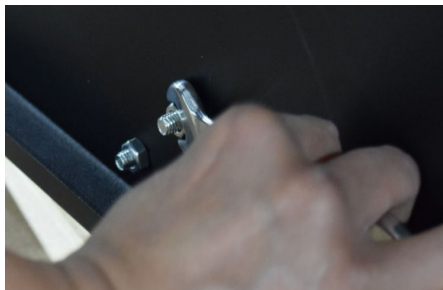
- Place the rubber foot (M) on the base plate and secure with bolt, washer, and nut. The motor will sit on this rubber foot.



- Align the motor to the base plate and secure with bolt, lock washer, washer, and nuts. Tighten with Phillips screwdriver. Hold nut with 13mm wrench.



- Attach the three legs (C) to the base plate (D) and secure with bolts, lock washer, washer, and nut. Hold the nut with 13mm wrench while simultaneously tightening the screw.



DC|15 Owner's Manual

7. Have another person lift the filter cartridge assembly (E) and align it with the upper leg holes.
 - a. The legs need to be on the outside of the assembly.
8. Insert the bolts, lock washers, and washers to the assembly through the upper leg holes.
 - b. Place the nut on the inside of the assembly.
9. Attach the screws, washers and nuts to all legs and tighten all the bolts using a Phillips screwdriver and 13mm wrench. Hold nut in place on other side.



10. Flip the filter (R) upside down and insert the filter cleaning paddle (N) into place. Secure with washer and nut. Make sure that the paddle flaps are in the filter pleats. If paddle installation is difficult, remove the screws on the ends of support bar.



DC|15 Owner's Manual

11. Flip the filter right side up and place the nuts, washers, and handle (O) on the threads. Place the fasteners (shown below) in this order: flat nut, washer, handle, washer, flat nut, cap nut. Hand-tighten these fasteners.



12. Place the filter (R) on the filter cartridge assembly and secure with band clamp (S).



13. Attach the protective mesh (L) and secure with the Phillips screws.



DC|15 Owner's Manual

14. Attach the two-way dust port inlet (A) to the motor housing and secure with the two Phillips screws. Do not overtighten.



15. Place both short hose clamps (Q) onto the short dust hose (K).
16. Attach the short hose to the filter cartridge assembly.
- c. Tighten the short hose clamp until the hose is securely fastened. Ensure that the clamp is between the hose grooves. Do not overtighten.
 - d. Attach the other end of the hose to the protective mesh and repeat step C.

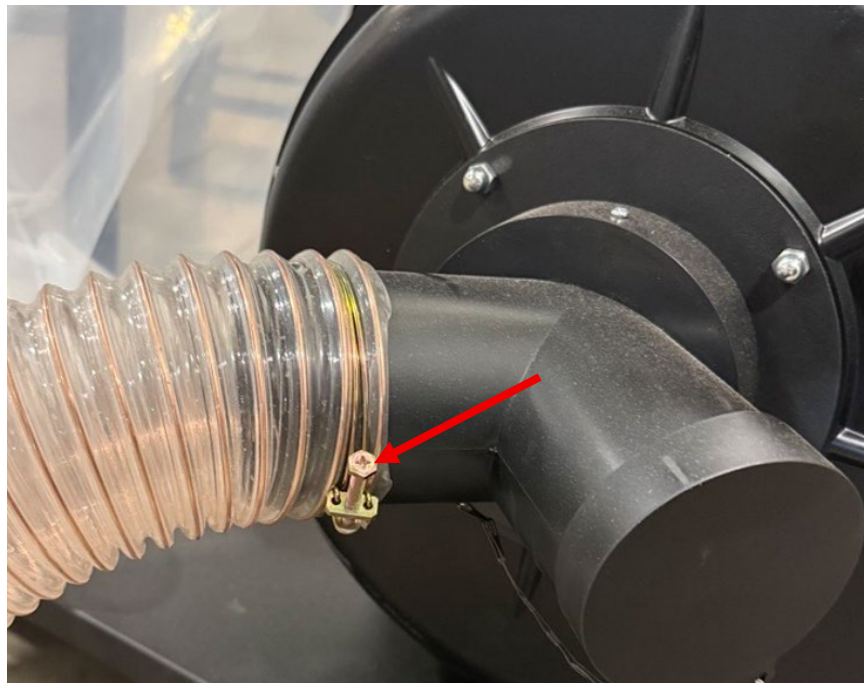


DC|15 Owner's Manual

17. Attach the two-way dust port inlet (A) to the impeller housing and secure with the two Phillips screws. Do not overtighten.



18. Place the cap on one end of the inlet.
19. Place the long hose clamp (P) onto the long dust hose (B).
20. Attach the long hose to the unused inlet.
 - e. Tighten the long hose clamp until the hose is securely fastened. Ensure that the clamp is between the hose grooves. Do not overtighten.
 - f. Attach the other end to a desired machine dust port.



DC|15 Owner's Manual

21. Locate the dust collection bag (F) and the bag retainer ring that was removed previously.
22. Pull the dust collection bag through the inside of the ring and fold the open edge over the bag retainer ring by three inches.



23. Install the ring inside the bottom lip of the filter cartridge assembly.
 - g. You may have to collapse the ring inward to ensure a proper fit.



24. Attach the DC:15 sign to the front of the legs and secure with bolts, lock washer, and nuts.



25. Ensure ALL bolts, nuts, and other fasteners are tight and secure.
26. Assembly is complete.

5.0 Test Run and Operation

Before operating the machine, Laguna Tools recommends that the operator read the entire manual before use.

WARNING

***Always disconnect power to the machine when not in use.
Failure to do this may result in serious personal injury or
damage to the machine.***

BEFORE EACH USE, inspect the general condition of the appliance. Check for:

- loose hardware,
- misalignment or binding of moving parts,
- cracked or broken parts,
- damaged electrical wiring, and any other condition that may affect its safe operation.

AFTER EACH USE, wipe external surfaces of the appliance with clean cloth. Store in an indoor dry area out of reach of children.

- Periodically tighten the hose clamps.
- Check Collection Bag prior to each use for tears or fraying. Replace if necessary.
- Keep the motor clean of dirt and debris.
- Periodically turn the handle on top of the filter to dislodge any dust from inside the canister.

DANGER

***TO PREVENT SERIOUS INJURY: If the supply cord of this
appliance is damaged, it must be replaced only by a qualified
service technician.***

Once assembly is complete, a test run is necessary to find any issues.

1. Plug in the machine.
2. Press the green ON button.
3. Observe the machine and ensure that the machine is running correctly.
 - a. Listen for any leaks or unusual sounds.
 - b. Put the palm of your hand to the end of the hose to ensure proper suction.
4. Fix any issues that are found.
5. If no issues are found, the dust collector is ready to use.

6.0 Maintenance

As with any machine, to ensure optimal performance you must conduct regular maintenance. Failure to follow maintenance procedures will void the warranty.



Always disconnect power to the machine before performing maintenance. Failure to do this may result in serious personal injury or damage to the machine. TO PREVENT SERIOUS INJURY: If the supply cord of this machine is damaged, it must be replaced only by a qualified service technician/electrician.

	Before Each Use	After Each Use	Daily	Weekly	Monthly
Empty the dust collection bag when it is $\frac{3}{4}$ full	X	X			
Inspect the machine for: <ul style="list-style-type: none"> • Loose hardware • misalignment or binding of moving parts, • cracked or broken parts • damaged electrical wiring, and • any other condition that may affect its safe operation. 	X	X			
Wipe the external surface of the appliance with a clean cloth. Store in an indoor dry area out of reach of children	X	X			
Check collection bag for tears or fraying. Replace if necessary	X	X	X		
Tighten hose clamps	X	X	X		
Clean dirt and debris off motor	X	X	X		
Turn the filter handle to dislodge dust from the canister. If using the machine continuously, turn the handle frequently.	X	X	X		

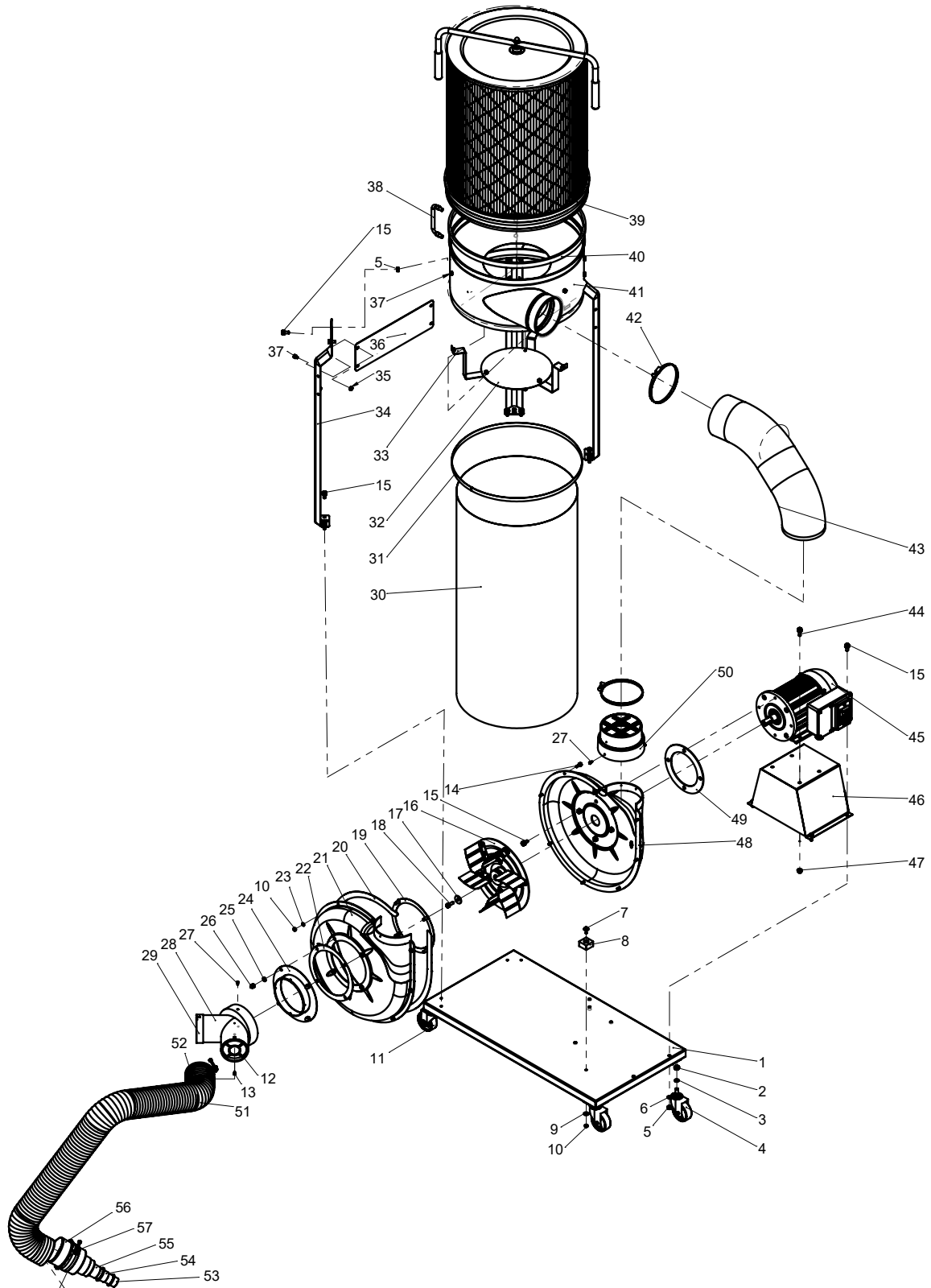
7.0 Troubleshooting

Symptom	Possible Cause	Correction
Machine does not start or a breaker trips.	Power supply switched OFF or is faulty	Ensure power supply is ON and has the correct voltage.
	Wall fuse/circuit breaker is blown/tripped	Ensure adequate circuit size; install inlet restrictor, replace weak breaker
	Incorrectly wired motor connection.	Rewire or call certified service technician or electrician.
	On-board circuit breaker is tripped.	Allow motor to cool, improve ventilation, press reset button.
	Wiring is open/has high resistance.	Check for broken wires or poor connections, repair, as necessary.
	Faulty power switch	Replace switch
	Motor is at fault	Test/repair/replace
Excessive vibration or noise during operation.	Loose component.	Inspect and tighten all bolts/nuts
	Loose or broken motor mount.	Tighten or replace as needed.
	Motor fan hitting fan cover.	Check fan and cover; replace as needed.
	Bad motor bearings.	Rotate shaft manually, check for grinding or loose shaft, replace bearings if needed.
Loud, repetitive noise, or excessive vibration coming from dust collector	Machine is on uneven surface.	Stabilize on a flat surface.
	Damaged/Unbalanced impeller.	Inspect impeller for dents, bends, loose fins. Replace if needed.
	Loose connections.	Check and re-tighten all fasteners.
	Impeller is loose	Replace the motor and impeller.

DC15 Owner's Manual

	Motor fan hitting fan cover.	Check fan and cover; replace as needed.
Dust collector does not adequately collect dust or chips, poor performance.	Canister end bag is full.	Empty canister end bag.
	Filter is dirty.	Clean filter.
	Restricted duct line.	Clean inlet adapter.
	Suction route is too long or has too many sharp bends.	Move machine closer to the point of suction, and rerun ducts to eliminate sharp bends.
	Wet lumber is clogging ducts.	Use lumber with less than 20% moisture content.
	Leaks in the duct work or too many open ports.	Repair all duct leaks and close any ports not being used.
Dust collector does not adequately collect dust or chips, poor performance.	Inadequate velocity in the main suction line.	Increase velocity by opening 1 or 2 more blast gates to different branch lines.
	Wrong size ducting/ports used.	Re-size and re-install ducts and fittings.
Sawdust being blown into the air from the dust collector	Band clamp or end bag is not secure.	Re-install ensuring a tight fit.
	Loose or damaged seals.	Replace seals and gaskets.

8.0 Exploded Parts View and Parts Lists



DC15 Owner's Manual

NO.	Specification	QTY
1	Base Assembly	1
2	Hex Nut Type I - M10	4
3	Spring Washer - D10	4
4	Caster Wheel	2
5	Hex Nut Type I - M8	12
6	Flat Washer D8	6
7	Hex Head Bolt and Big Flat Washer Assembly - M6×20	1
8	Rubber Foot	1
9	Big Washer -D6	1
10	Hex Nut Type I - M6	15
11	Caster Wheel	2
12	Inlet Protective Mesh	2
13	Cross Recessed Pan Head Self-Tapping Screw - ST4.2 X 10	4
14	Hex Bolt+Spring Washer+Flat Washer Assembly - M6×20	8
15	Hex Bolt+Spring Washer+Flat Washer Assembly - M8×20	20
16	Impeller Assembly	1
17	Impeller Flat Washer	1
18	Hex Bolt and Spring Washer Assembly - M8×25	1
19	Flange Fixing Ring Assembly	1
20	Air Chamber Seal Strip	1
21	Inlet End Air Chamber	1
22	Inlet Seal Gasket	1
23	Flat Washer - D6	8
24	Inlet Assembly	1
25	Spring Washer -D8	4
26	Hex Nut - M8	4
27	Cross Recessed Pan Head Self-Tapping Screw - ST4.2×12.7	6
28	Inlet	1
29	Inlet Cover	1

NO.	Specification	QTY
30	Dust Collection Bag	1
31	Dust Bag Fixing Ring	1
32	Dust Falling Plate	1
33	Dust Falling Hanging Plate	3
34	Support Leg	3
35	Hex Flange Nut - M6	4
36	Support Leg Connecting Plate	1
37	Hex Bolt+Spring Washer and Flat Washer Assembly - M6×12	11
38	Foldable Handle	1
39	Filter Cartridge Assembly	1
40	Self-Adhesive Sealing Strip with Glue	1
41	Dust Discharge Cylinder Assembly	1
42	Type A Worm Drive Hose Clamp	2
43	Hose	1
44	Hex Bolt+Spring Washer+Flat Washer Assembly - M8×25	4
45	Motor	1
46	Motor Base Assembly	1
47	Hex Flange Nut - M8	4
48	Motor End Air Chamber	1
49	Motor Seal Gasket	1
50	Outlet Protective Mesh	1
51	Hose	1
52	Double Wire Clamp	2
53	Interface I	1
54	Interface H	1
55	Interface G	1
56	Interface F	1
57	Interface C	1

9.0 Warranties

Dealer Machinery Warranty

New woodworking machines sold by Laguna Tools carry a two-year warranty effective from the date of dealer invoice to customer/end-user. Machines sold through dealers must be registered with Laguna Tools within thirty (30) days of purchase to be covered by this warranty. Laguna Tools guarantees all new machines sold to be free of manufacturers' defective workmanship, parts, and materials. We will repair or replace, without charge, any parts determined by Laguna Tools, Inc. to be a manufacturer's defect. We require that the defective item/part be returned to Laguna Tools with the complaint. The end-user must request a Return Material Authorization (RMA) number from Customer Service. Include the RMA number with any and all returned parts/components requesting warranty coverage*. Any machines returned to Laguna Tools must be returned with packaging in the same manner in which it was received. A part or blade is being returned must have adequate packaging to ensure it is not damaged during shipping. In the event the item/part is determined to be damaged due to lack of maintenance, cleaning, or misuse/abuse, the customer will be responsible for the cost to replace the item/part, plus all related shipping charges. This limited warranty does not apply to natural disasters, acts of terrorism, normal wear and tear, product failure due to lack of maintenance or cleaning, damage caused by accident, neglect, lack of or inadequate dust collection, misuse/abuse or damage caused where repair or alterations have been made or attempted by others.

* The issue of an RMA number is for reference only; it DOES NOT indicate acceptance of the warranty claim.

CNC Limited Warranty

New CNC machines sold by Laguna Tools carry a one-year warranty effective from the date of shipping. Laguna Tools guarantees all new machines sold to be free of manufacturers' defective workmanship, parts, and materials. We will repair or replace, without charge, any parts determined by Laguna Tools, Inc. to be a manufacturer's defect. If the defective item/part is determined to be damaged due to lack of maintenance, cleaning or misuse/abuse, the customer will be responsible for the cost to replace the item/part, plus all related shipping charges. This limited warranty does not apply to natural disasters, acts of terrorism, normal wear and tear, product failure due to lack of maintenance or cleaning, damage caused by accident, neglect, lack of or inadequate dust collection, misuse/abuse or damage caused where repair or alterations have been made or attempted by others.

Laguna Tools, Inc. is not responsible for additional tools or modifications sold or performed (other than from/by Laguna Tools, Inc.) on any Laguna Tools, Inc. woodworking and/or metalworking machine. The warranty may be voided upon the addition of such described tools and/or modifications, determined on a case-by-case basis. Software purchased through Laguna Tools, Inc., is not covered under this warranty

DC|15 Owner's Manual

and all technical support must be managed through the software provider. Normal user alignment, adjustment, tuning, and machine settings are not covered by this warranty. It is the responsibility of the user to understand basic woodworking machinery settings and procedures and to properly maintain the equipment in accordance with the standards provided by the manufacturer.

Parts under warranty are shipped at Laguna Tools, Inc.'s cost either by common carrier, FEDEX ground service, or a similar method. Technical support to install replacement parts is primarily provided by phone, fax, e-mail or Laguna Tools Customer Support Website. The labor required to install replacement parts is the responsibility of the user. Laguna Tools is not responsible for damage or loss caused by a freight company or other circumstances not in our control. All claims for loss or damaged goods must be notified to Laguna Tools within twenty-four (24) hours of delivery.

Please contact our Customer Service Department for more information. Only NEW machines sold to the original owner are covered by this warranty.

For warranty repair information, call 1-800-332-4094.

Warning: No portion of these materials may be reproduced without written approval from Laguna Tools, Inc.

Copyright© 2025 Laguna Tools, Inc.

No Modifications Allowed or Sold

Laguna Tools, Inc. is not responsible for additional tools or modifications sold or performed (other than from/by Laguna Tools, Inc.) on any Laguna Tools, Inc. woodworking and/or metalworking machine. The warranty may be voided upon the addition of such described tools and/or modifications, determined on a case-by-case basis. Normal user alignment, adjustment, tuning, and machine settings are not covered by this warranty. It is the responsibility of the user to understand basic woodworking and/or metalworking machinery settings and procedures and to properly maintain the equipment in accordance with the standards provided by the manufacturer. Parts, under warranty, are shipped at Laguna Tools, Inc.'s cost either by common carrier, FEDEX ground service or a similar method. Technical support to install replacement parts is primarily provided by phone, fax, e-mail, or Laguna Tools Customer Support Website. The labor required to install replacement parts is the responsibility of the user. Laguna Tools is not responsible for damage or loss caused by a freight company or other circumstances not in our control. All claims for loss or damaged goods must be notified to Laguna Tools within twenty-four (24) hours of delivery. Please contact our Customer Service Department for more information. Only new machines sold to the original owner are covered by this warranty.

For warranty repair information call 1-800-332-4094.

Laguna Tools Warranty

WARRANTY & REGISTRATION

Thank You!

Welcome to the Laguna Tools® group of discriminating woodworkers. We understand that you have a choice of where to purchase your machines and appreciate the confidence you have in the Laguna Tools® brand.

Through hands-on experience, Laguna Tools® is constantly working hard to make innovative, precision products. Products that inspire you to create works of art are a joy to operate and encourage your best work.

Laguna Tools®
Imagination, Innovation, and Invention at Work

Warranty & Registration

Every product sold is warranted to be free of manufacturer's defective workmanship, parts, and materials. For any questions about this produce, the intended use or what it was designed for, customer service, or replacement parts, please contact our customer service department:

Laguna Tools® Customer Service
744 Refuge Way, Grand Prairie, Texas 75050, USA
1-800-234-1976
www.lagunatools.com/why/customer-service/
8AM. To 5PM PSF. Monday through Friday

For warranty claims or to report damage upon receiving-please reach out to our warranty department:

Laguna Tools® Warranty Service
744 Refuge Way, Grand Prairie, Texas 75050, USA
1-800-234-1976
www.lagunatools.com/policies/warranty
8AM to 5PM PST, Monday through Friday

Registration

To prevent voiding this warranty, all products sold must be registered within thirty (30) days of receiving the product. Registering the product will enable the original purchaser to receive notifications about important product changes, receive customer service, and be able to file a warranty claim against defective workmanship, parts, or materials.



Who is Covered

The applicable warranty covers only the initial purchaser of the product from the date of receiving the product. To file such claims, the original purchaser must present the original receipt as proof of purchase.

What is Covered

The warranty covers any defects in the workmanship of all parts and materials that make up the machine unless otherwise specified. Any part determined by Laguna Tools® to have a defect will be repaired or replaced (and shipped), without charge. The defective item/part must be returned to Laguna Tools® with the complaint and proof of purchase in the original packaging that it was received in. In the event the item/part is determined to be not covered by this warranty, the customer will be responsible for the cost to replace the item/part and all related shipping charges.

Warranty Limitations

This limited warranty does not apply to natural disasters, acts of terrorism, normal wear and tear, product failure due to lack of maintenance or cleaning, damage caused by accident, neglect, or lack-of inadequate dust collection. The warranty may be voided against proof of misuse/abuse, damage caused where repair or alterations have been made or attempted by others, using the product for purposes other than those described as intended use (unless with consent by Laguna Tools®), modification to the product, or use with an accessory that was not designed for the product. It is the responsibility of the user to understand basic woodworking machinery settings and procedures and to properly maintain the equipment in accordance with the standards provided in this manual.

Length of Warranty

All new machines and optional accessories sold through an authorized dealer carry a two-year warranty effective from the date of receiving the product. Machines sold for either commercial or industrial use have a one-year warranty. Wearable parts like throat plates, bandsaw guides, etc., have a ninety-day warranty.

Table A-1 Warranty Lengths

2 Year – New Machines Sold Through an Authorized Dealer
2 Year – Accessories Sold as Machine Options (excluding blades)
1 Year – Machines Sold for Commercial or Industrial Use
1 Year – Blades and Accessories outside or Machine Options
90 Days – Wearable Parts

Aside from being free of defects upon receiving, consumable parts, like cutters and abrasives, are not covered by this warranty unless otherwise stated by Laguna Tools®. These parts are designed to be used at the expense of the operator and are available for replacement or inventory purchase. The determination of a consumable part will be made on a case-by-case basis by Laguna Tools®.

Shipping Damage

Laguna Tools® is not responsible for damage or loss caused by a freight company or other circumstances not in the direct control of Laguna Tools®. All shipping-related claims for loss or damage to goods must be made to Laguna Tools® within twenty-four hours of delivery.

How to Receive Support

To file a warranty claim, please contact the warranty department at 1-800-234-1976. To receive customer service or technical support, please contact the customer service department at 1-800-332-4094. Parts, under warranty, are shipped at the expense of Laguna Tools® either by common carrier, FedEx ground services, or similar method. Technical support to install replacement parts is primarily provided by phone, fax, email, or the Laguna Tools® Customer Service Support Website.



© 01/2025 Laguna Tools, Inc.

LAGUNA

Laguna Tools, Inc.

744 Refuge Way, Suite 200

Grand Prairie, TX 75050

1-800-234-1976

www.lagunatools.com

Copyright © 2025 Laguna Tools, Inc. All rights reserved.