

Swift Vacuum Owner's Manual



LAGUNA

Laguna Tools, Inc.
744 Refuge Way
Grand Prairie, TX
lagunatools.com

Swift Vacuum Owner's Manual

Scope of This Manual

This manual provides basic operating and maintenance procedures for the Swift Vacuum.

For detailed instructions and videos, please go to www.lagunatools.com.

Customer Service

For technical support, please contact Laguna Tools:

For technical support, please contact Laguna Tools contact Customer Service by phone at 1-800-332-4094, or email customer_service@lagunatools.com. Please note the machine type in the subject line.

Copyright © 2023

Laguna Tools, Inc.

ALL RIGHTS RESERVED

This document contains material protected under International and Federal Copyright Laws and Treaties. Any unauthorized reprint or use of this material is prohibited. No part of this document may be reproduced or transmitted in any form or by any means, electronic or mechanical, including photocopying, recording, or by any information storage and retrieval system without express written permission from the author/publisher. LAGUNA® and the LAGUNA Logo® are the registered trademarks of Laguna Tools, Inc.

DISCLAIMER

Laguna Tools is not responsible for errors or omissions. Specifications subject to change. Machines may be shown with optional accessories.

Revision 03 (07/20/2023)

Swift Vacuum Owner's Manual

Table of Contents

1.0	General Information and Safety	7
1.1	Overview	7
1.2	Safety Call-Outs	7
1.3	Safety Rules	8
1.4	Machine And Workshop Safety Instructions	9
1.5	Electrical Safety.....	11
2.0	Receiving Your Machine	13
3.0	Machine Overview.....	15
3.1	Introduction To CNC Machines	15
3.2	Swift Vacuum	15
3.3	Machine Briefing.....	15
3.4	Features On The Machine	15
3.5	Specifications	16
3.6	Layout And Footprint.....	17
3.7	Components	18
3.8	Electrical Cabinet	20
3.9	Accessories	23
4.0	Machine Placement.....	25
4.1	Placement	25
4.2	Locating Your Machine.....	26
4.3	Space Allocation/Dust Collection	26
4.4	Electrical Requirements	26
4.5	Lighting.....	26
4.6	Machine Weight/Load.....	26
4.7	Unpacking Your Machine	27

Swift Vacuum Owner's Manual

5.0	Assembly and Setup	29
5.1	Electrical Connection For The Machine	29
5.2	Vacuum Pump Installation	30
5.3	Water Pump Installation	30
5.4	Fitting The Dust Hose.....	32
5.5	Assembling The Controller.....	34
5.6	Fitting The Router Bit Into The Router Head	35
5.7	Controller Button Functions.....	37
6.0	Operation	39
6.1	Turning On The Machine	39
6.2	Moving The Router Head	40
6.3	Jogging Speed	41
6.4	Setting The Work Envelope	41
6.5	Using The Vacuum Table.....	42
6.6	Fitting The Foam Rubber Gasket.....	43
6.7	Spoil Boards	43
6.8	Spoil Board Preparation	44
6.9	Precautions Regarding Spoil Boards	45
6.10	Vacuum Table T-Slots.....	46
6.11	Fitting The Touch Off Puck	46
6.12	Automatic Z Origin Point (Tool Touch Off Point).....	46
6.13	Manual Z Origin Point (Tool Touch Off Point).....	46
6.14	Setting The Spoil Board On The Vacuum Table.....	47
6.15	Fitting A Job To The Spoil Board	48
7.0	Resetting the Origin Point	49
7.1	Spindle Speed Control	49
7.2	Loading A Program Into The Machine	49

Swift Vacuum Owner's Manual

8.0	Maintenance and Troubleshooting	51
8.1	Daily Checks	51
8.2	Weekly Checks.....	51
8.3	Oiling The Machine	52
9.0	Troubleshooting	53
10.0	Warranties	55

1.0 General Information and Safety

1.1 Overview

Please read and understand all warnings and operating instructions before using any tool or equipment. Always follow basic safety precautions to reduce the risk of personal injury. Improper operation, maintenance, or modification of tools or equipment could result in serious injury and property damage. There are certain applications for which tools and equipment are designed. This product should NOT be modified and/or used for any application for which it was not designed.

It is important to read and understand this manual. The information herein is provided for your safety while assembling and operating the machine.

1.2 Safety Call-Outs

Please review and heed the following safe signs and call-outs:

 **DANGER**

An imminently hazardous situation which, if not avoided, will result in death or serious injury.

 **WARNING**

A potentially hazardous situation which, if not avoided, may result in death or serious injury.

 **CAUTION**

A potentially hazardous situation which, if not avoided, could result in minor or moderate injury.

NOTE

A helpful tip from Laguna Tools staff.

1.3 Safety Rules

Please read and understand all safety warnings and operating instructions before using this machine.

Failure to follow all instructions listed below may result in electric shock, fire, and/or serious personal injury or property damage. Woodworking can be dangerous if safe and proper operating procedures are not followed. As with all machinery, there are certain hazards involved with the operation of the product. Using the machine with respect and caution will considerably lessen the possibility of personal injury. However, if normal safety precautions are overlooked or ignored, improper operation or assembly of this machine could result in personal injury to the operator. Safety equipment such as guards, push sticks, hold downs, feather boards, goggles, dust masks, and hearing protection can reduce your potential for injury.

Always use common sense and exercise caution in the workshop. If a procedure feels dangerous, do not try it. Consult a professional to find an alternative procedure which is safer and more efficient.

NOTE

Your personal safety is your responsibility.

DANGER

This machine was designed for specific applications only. The machine should not be modified and/or used for any application other than that for which it was designed. If you have any questions relative to a particular application, DO NOT use the machine until you have first contacted the manufacturer to determine if it can or should be performed on the product.



When using an electrical machine, basic precautions should always be followed, including the following:

Read and understand all warnings and operation instructions before using any tool or equipment. Always follow basic safety precautions to reduce the risk of personal injury. Improper operation, maintenance, or modification of tools or equipment could result in serious injury and property damage. There are certain applications for which tools and equipment are designed. It is important for you to read and understand this manual. The information it contains relates to protecting your safety and preventing problems.

1.4 Machine and Workshop Safety Instructions

OWNER'S MANUAL – Please read and understand the owner's manual before operating the machine.

TRAINED OPERATORS ONLY – Only allow trained/supervised operators to use the machine. Disconnect power when the machine is not in use. Remove the switch keys or lock-out the machine to prevent unauthorized use and child-proof the workshop.

DANGEROUS ENVIRONMENTS – Do not use machinery in areas that are wet, cluttered, or have poor lighting. Operating machinery under these conditions greatly increases the risk of accidents and injury.

MENTAL AWARENESS – Full awareness is required for the safe operation of machinery. Never operate machinery under the influence of drugs or alcohol, when tired, or when distracted.

ELECTRICAL EQUIPMENT INJURY RISKS – Contact with improperly grounded machinery and live electrical components can cause shock, burns, and death. Only allow qualified service personnel to do electrical installation or repair work, and always disconnect power before accessing or exposing electrical equipment to reduce risks.

Swift Vacuum Owner's Manual

DISCONNECT POWER FIRST – Always disconnect the machine from the power supply before adjusting the machine or performing service to prevent injury from unintended start-up or contact with live electrical components.

EYE PROTECTION –Wear ANSI-approved safety glasses or a face shield when operating or observing machinery to reduce the risk of eye injury or blindness from flying particles. Normal eyeglasses are not approved safety glasses.

WEAR PROPER CLOTHING – Do not wear clothing, apparel, or jewelry that can become entangled in moving parts. Always tie back or cover long hair. Wear non-slip footwear to reduce the risk of slipping and losing control or accidentally contacting cutting tool or moving parts.

HAZARDOUS DUST – Dust created by machine operation may cause cancer, birth defects, or long-term respiratory damage. Be aware of dust hazards associated with each workpiece material always wear a NIOSH-approved respirator.

HEARING PROTECTION – Always wear hearing protection when operating or observing loud machinery. Extended exposure to machine noise without hearing protection can cause permanent hearing loss.

REMOVE TOOLS – Tools left on machinery can become dangerous projectiles upon start-up. Never leave chuck keys, wrenches, or any other tools on machine. Always verify removal before starting.

USE CORRECT TOOL FOR THE JOB – Only use the tool for its intended purpose – do not force it or an attachment to do a job for which it was not designed. Never make unapproved modifications. Modifying tools or using it differently than intended may result in malfunction or mechanical failure that can lead to personal injury or death.

AWKWARD POSITIONS – Keep proper footing and balance at all times when operating machine. Do not overreach avoid awkward hand positions that make workpiece control difficult or increase the risk of accidental injury.

CHILDREN AND BYSTANDERS – Keep children and bystanders at a safe distance from the work area. Stop using the machine if distracted.

GUARDS AND COVERS – Verify guards and covers are properly installed, undamaged, and working correctly before operating the machine. Guards and covers reduce accidental contact with moving parts or flying debris.

FORCING MACHINERY – Do not force the machine. It will do the job safer and properly at the rate for which it was designed.

NEVER STAND ON THE MACHINE – Serious injury may occur if the machine is tipped or if the cutting tool is unintentionally contacted.

Swift Vacuum Owner's Manual

STABLE MACHINE – Unexpected movement during operation greatly increases the risk of injury or loss of control. Before starting, verify the machine is stable and mobile base (if used) is locked.

USE RECOMMENDED ACCESSORIES – Consult the owner's manual or the manufacturer for recommended accessories. Using improper accessories will increase the risk of serious injury.

UNATTENDED OPERATION – Never leave machine running while unattended. To reduce the risk of accidental injury, turn the machine off and verify all moving parts completely stop before leaving unattended.

MAINTAIN WITH CARE – Follow all maintenance instructions and lubrication schedules to keep the machine in good working condition. A machine that is improperly maintained could malfunction, leading to serious personal injury or death.

DAMAGED PARTS – Regularly inspect machine for damaged, loose, or improperly adjusted parts or any condition that could affect safe operation. Immediately repair/replace before operating the machine. For your own safety, do not operate the machine with damaged parts.

MAINTAIN POWER CORDS – When disconnecting cord-connected machines from power, grab, and pull the plug – not the cord. Pulling the cord may damage the wires inside. Do not handle cord/plug with wet hands. Avoid cord damage by keeping it away from heated surfaces, high traffic areas, and wet/damp locations.

1.5 Electrical Safety

The machine must be grounded to ensure safety. Grounding provides a path of least resistance for the electric current and will reduce the risk of electric shock in the event of a malfunction.

Verify the green ground wire is securely connected to a ground lug. Replace any ground wire if it appears damaged or worn. Consult a qualified electrician if in doubt about the proper grounding of the machine.

NOTES:

2.0 Receiving Your Machine

Your machine will likely be delivered by a third-party service. Before you unpack your machine, you will first need to inspect the packing, invoice, and shipping documents supplied by the driver.

Ensure that there is no visible damage to the packaging or the machine. You must do this prior to the drive leaving. All damage must be noted on the delivery documents and signed by you and the delivery driver. You must then contact the seller, Laguna Tools, within 24 hours. It is advisable to photograph any shipping damage to support an insurance claim.

NOTE

All shipping damage must be noted upon delivery and signed by the owner and the delivery driver. If you find any damaged items in your package, you must contact Laguna Tools to file a complaint. In order to return damaged goods under the limited warranty to Laguna Tools, Inc., you MUST have the original packaging. All claims of loss or damaged goods must be reported to Laguna Tools within 24 HOURS of delivery. Please contact the Laguna Tools, Inc. Customer Service Department to make claims for any damaged items/parts.

NOTE

You may find sawdust in your machine upon arrival. This is because the machine has been tested prior to shipment from the factory and/or Laguna Tools. Laguna Tools endeavors to test machines prior to shipping to customers as movement can take place during transportation. It must be noted that additional machine movement can take place between Laguna Tools and delivery and some adjustments may have to be undertaken by the customer. These adjustments are covered in the various sections of this manual.

Swift Vacuum Owner's Manual

Most large machinery will be delivered on a tractor trailer 48 to 53 feet long. Please notify Sales Representative of any Delivery Restrictions.

- The customer is required to have a forklift (6000 lbs. or larger is recommended) with 72-inch forks or fork extensions.
- Note any visible damage, torn packaging, scuffs, or any abnormal marks on the delivery receipt or Bill of Lading (BoL).

3.0 Machine Overview

3.1 Introduction to CNC Machines

The CNC is designed to provide years of safe service. Read this owner's manual in its entirety before use. The advantage of the CNC machine is that it can, in most cases, fully machine the complete job without it being removed from the table so that you have finished parts of high accuracy that are totally repeatable. It can also produce intricate carvings with the purchase of the relevant software. Nesting is also a valuable feature of CNC machine that saves on waste and costs. It is possible to reduce the number of different machines in the shop as the CNC will perform multiple functions and is a must for cabinet makers and serious wood workers.

3.2 Swift Vacuum

The Laguna Swift Vacuum CNC Router features a work envelope of 4' x 4', 4' x 8', 5' x 10'. It also includes an industrial-grade liquid cooled electro-spindle. The Swift Vacuum features a 4-zone (4' x 4' table) or 6-zone (4' x 8'/5' x 10') vacuum phenolic table to hold down your parts.

3.3 Machine Briefing

The Laguna Swift Vacuum offers a rugged platform with the durability and accuracy to process materials including wood, plastics, foams, aluminum, and composites. The optional vacuum table and 4th axis turner expands the possibilities of the machine even further. Built to the same standards as the Smartshop line and featuring many of the same components, the Swift Vacuum is a durable machine and dependable machine for businesses.

3.4 Features on the Machine

- 3HP Water Cooled Electro-Spindle (ER-20 Collet)
- 6,000 – 24,000 RPM Spindle
- Vacuum Table
- Handheld Controller
- Gantry Height: 7-1/2"
- Ball Screw "On" Z-Axis

Swift Vacuum Owner's Manual

- Double Helical Rack Drive on X & Y Axis

Vacuum Pump Sold Separately

3.5 Specifications

Item	Swift 48" x 48" or 4' x 4'	Swift 48" x 96" or 4' x 8'	Swift 60" x 120" or 5' x 10'
Spindle	3 Phase Industrial Induction Spindle, Liquid Cooled	3 Phase Industrial Induction Spindle, Liquid Cooled	3 Phase Industrial Induction Spindle, Liquid Cooled
Spindle RPM	6,000 – 24,000	6,000 – 24,000	6,000 – 24,000
Dust Chute Diameter	4 inches	4 inches	4 inches
Power	208-230V, 1- or 3-Phase	208-230V, 1- or 3-Phase	208-230V, 1- or 3-Phase
Gantry Clearance	8 inches	8 inches	8 inches
Machine Worktable	T-Slot/Vacuum	T-Slot/Vacuum	T-Slot/Vacuum
Z-Axis	Precision Ball Screw	Precision Ball Screw	Precision Ball Screw
X & Y-Axis	Rack & Pinion	Rack & Pinion	Rack & Pinion
Machine Footprint	73" w x 80" l x 55" h	67" w x 120" l x 80" h	90" w x 144" l x 58" h
Work Envelope	48" x 48" or 4' x 4'	48" x 96" or 4' x 8'	60" x 120" or 5' x 10'

Swift Vacuum Owner's Manual

3.6 Layout and Footprint

LAGUNA
SWIFT VACUUM TABLE 4' X 4'
10HP VACUUM 1 OR 3 PHASE

{MCNC Swift w/ Vacuum Ready Table 4x4}

SPECIFICATION:		DRAWN.S.B. 6/1/2016_REV.2
POWER REQUIREMENTS. (See Note:)	220V,30A,3 PH. OR 40A,1PH. W/ VAC,VFD	
FOOTPRINT:	78" W X 73" L	
WORKING AREA:	49" X 49"	
GANTRY CLEARANCE:	7"	
SPINDLE:	3 HP, LIQUID COOLED	
SPINDLE RPM:	6,000-24,000	
RAPID TRAVEL:	900 IPM	
MAXIMUM CUTTING SPEED:	600 IPM	
DUST PORT DIAMETER:	4"	
PRECISION HELICAL RACK & PINION DRIVE SYSTEM FOR X AND Y AXES:	20MM HEAVY DUTY LINEAR BEARING,ALL AXES	
CONTROLLER:	LAGUNA HAND HELD DSP	
MDF TABLE TOP WITH TEE SLOTS:	YES	
SOLID STATE HOME SWITCH'S:	YES	
HEAVY DUTY WELDMENT TUBULAR STEEL FRAME:	1500 POUNDS	
CENTRALIZED LUBRICATION SYSTEM FOR ALL AXES:	YES	
VACUUM TABLE:	4 ZONES	
VACUUM PUMP NOT INCLUDED:	OPTIONAL: (10HP,3PH,REGEN VACUUM)-	

Notes on Power requirements: A vfd is used for 3 phase vacuum when single phase is used to power machine.

Swift 4' x 4' Table

LAGUNA
SWIFT VACUUM TABLE 4' X 8'
10HP VACUUM 1 OR 3 PHASE

{MCNC Swift w/ Vacuum Ready Table 4x8}

SPECIFICATION:		DRAWN.S.B. 6/1/2016_REV.2
POWER REQUIREMENTS. (See Note:)	220V,40A,3 PH. OR 50A,1PH. W/ VAC,VFD	
FOOTPRINT:	78" W X 122" L	
WORKING AREA:	49" X 97"	
GANTRY CLEARANCE:	7"	
SPINDLE:	3 HP, LIQUID COOLED	
SPINDLE RPM:	6,000-24,000	
RAPID TRAVEL:	900 IPM	
MAXIMUM CUTTING SPEED:	600 IPM	
DUST PORT DIAMETER:	4"	
PRECISION HELICAL RACK & PINION DRIVE SYSTEM FOR X AND Y AXES:	20MM HEAVY DUTY LINEAR BEARING,ALL AXES	
CONTROLLER:	LAGUNA HAND HELD DSP	
MDF TABLE TOP WITH TEE SLOTS:	YES	
SOLID STATE HOME SWITCH'S:	YES	
HEAVY DUTY WELDMENT TUBULAR STEEL FRAME:	2000 POUNDS	
CENTRALIZED LUBRICATION SYSTEM FOR ALL AXES:	YES	
VACUUM TABLE:	6 ZONES	
VACUUM PUMP NOT INCLUDED:	{10HP,3PH,REGEN VACUUM}-	

Notes on Power requirements: A vfd is used for 3 phase vacuum when single phase is used to power machine.

Swift 4' x 8' Table

3.7 Components



Figure 3-1: Swift Vacuum Components

- | | |
|--------------------------------|-----------------|
| 1. Electrical Cabinet | 4. Vacuum Table |
| 2. Router Spindle w/ Dust Hood | 5. Frame |
| 3. Gantry | |

1. **Electrical Cabinet** – The electrical cabinet is a dust free enclosure and will be located on the side of the machine.

NOTE

See Section 3.8 Electrical Cabinet for a more detailed breakdown of the electrical cabinet.

2. **Router Spindle** – The router spindle is moved along the gantry by a precision ball screw system that is controlled by the machine controller.

Swift Vacuum Owner's Manual

3. **Gantry** – The gantry straddles the bed and carries the router spindle motion system. It is moved along the length of the bed by a precision ball screw system that is controlled by the machine controller.
4. **Bed** – The bed of the machine consists of a heavy steel frame with a plastic top that is slotted for the vacuum function. It has T-Slots to clamp the job or fixtures to the bed.
5. **Frame** – The frame is a heavy welded construction that supports all the other parts of the machine.
6. **Caterpillar Track (not shown)** – The caterpillar track runs along the side of the machine in a trough and carries all the electrical cables and the spindle colling tubes.
7. **Water Pump (not shown)** – The water pump provides coolant for the router spindle motor. The water pump provides coolant for the router spindle without the cooling pump running can lead to spindle bearing failure.

NOTE

See Section 5.3 Water Pump Installation for more detailed instructions on installing the water pump.

3.8 Electrical Cabinet

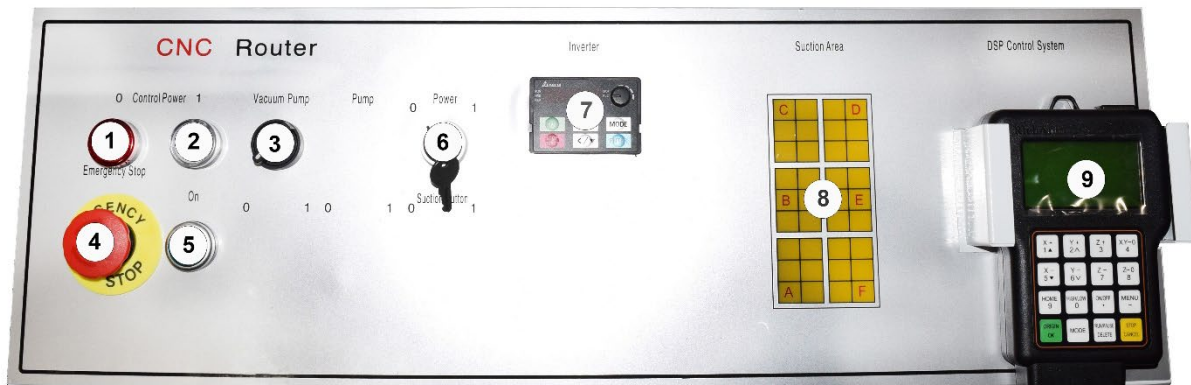


Figure 3-2: Control Panel

- | | |
|-----------------------------|------------------------|
| 1. Stop Light | 6. Power Lock Key |
| 2. Power On Light | 7. Inverter Controller |
| 3. Vacuum Pump Power Switch | 8. Bed Suction Guide |
| 4. Emergency Stop Button | 9. Handheld Controller |
| 5. Power On Button | |

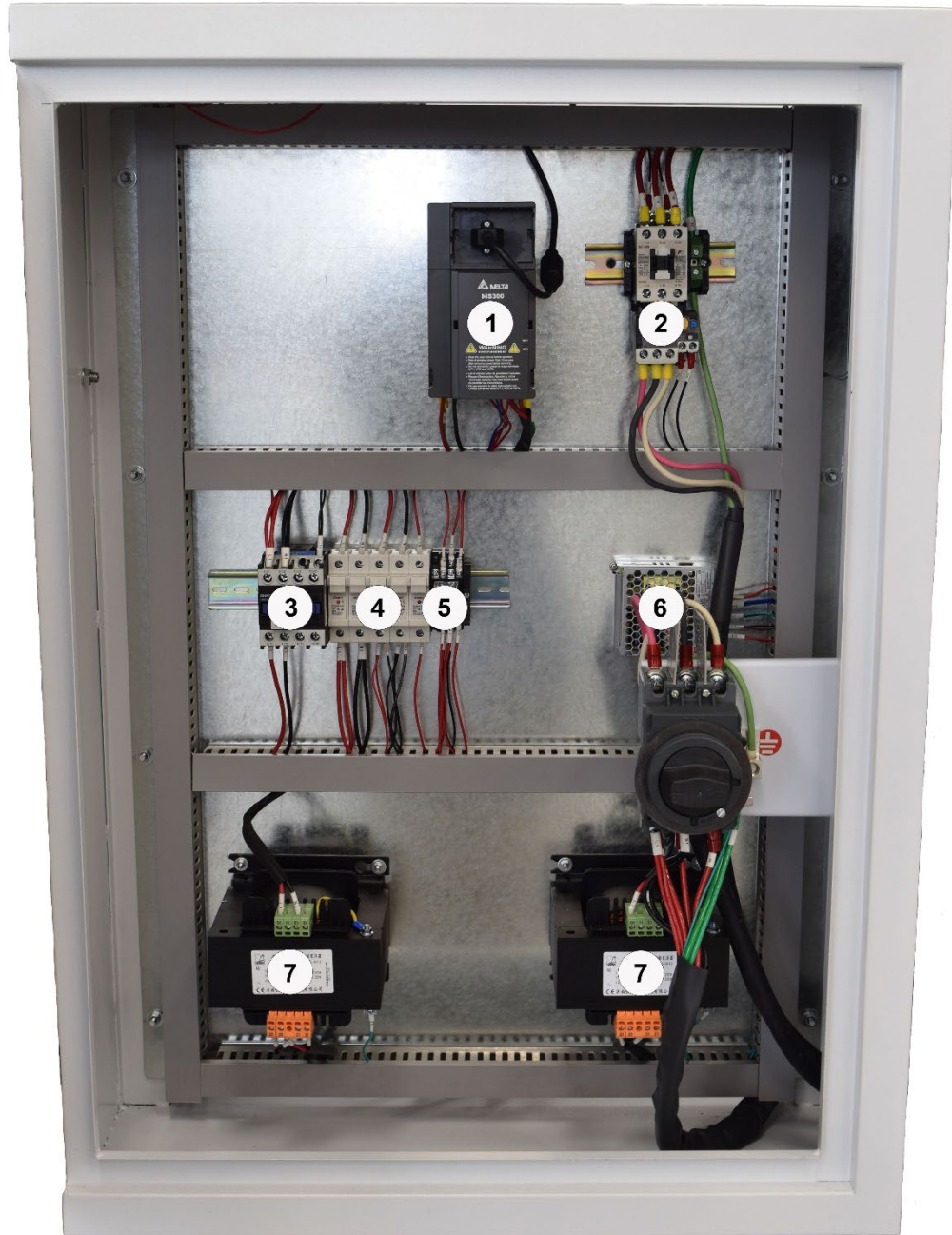


Figure 3-3: Front Panel

- | | |
|--------------------------|-------------------------|
| 1. VFD | 5. Ice Cube Relay |
| 2. Vacuum Pump Contactor | 6. 24 Volt Power Supply |
| 3. Main Contactor-MCR | 7. Stepdown Transformer |
| 4. Fuse Holder | |

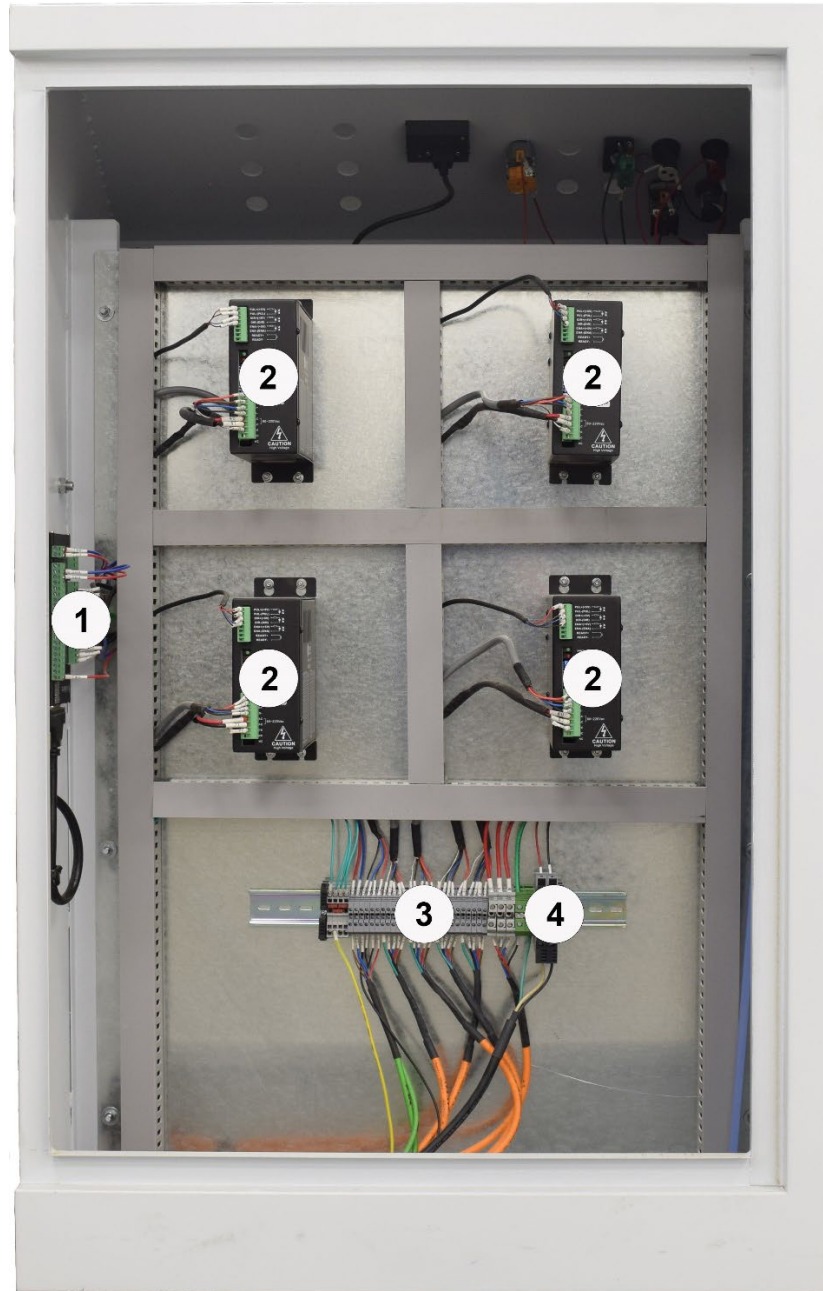


Figure 3-4: Rear Panel

- | | |
|-------------------------------|--------------------|
| 1. Control Card | 3. Terminal Strips |
| 2. ND-2278 Lead-Shine Drivers | 4. Water Pump Fuse |

3.9 Accessories

Toolbox



Laguna Container



Wrenches



Table Clamps



Spare Drive Belts



Dust Shroud/Hood



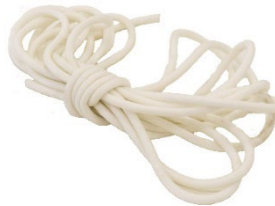
Collets



Flash Drive



Gasket



USB Cable



Router Bits



Fuses



Swift Vacuum Owner's Manual

Handheld Controller



Water Pump



4.0 Machine Placement

When unpacking your machine, separate all enclosed items from the packing materials and inspect them for damage. Ensure that there is no visible damage to either the packaging or the machine BEFORE the driver leaves. Save all packaging materials until you are satisfied with the machine and/or have resolved any issues concerning any missing or damaged items.

NOTE

It is probable that you will find sawdust within your machine. This is because the machine has been tested prior to shipment from the factory and or Laguna Tools. We test machines prior to shipping to customers, but movement can take place during transportation. Some adjustments may have to be undertaken by the customer. These adjustments are covered in the various sections of this manual.

4.1 Placement

Select the area where you will use our machine. Guidelines for properly placing your machine follow:

1. There should be sufficient area at the front of the machine to allow you to work comfortably.
2. There should be sufficient area at the back of the machine to allow access for adjustments and maintenance to be conducted.
3. Adequate lighting – The better the lighting the more accurately and safely you will be able to work.
4. Solid floor – You should select a solid flat floor, preferably one made of concrete or something similar.
5. Locate it close to a power source and dust collection.
6. Allow an area for the storage of blanks, finished products, and tools.

4.2 Locating Your Machine

The physical environment where you locate your machine is important for safe assembly and operation of your machine. Before removing your dust collector from the packaging consider the weight load, electrical installation requirements, lighting, dust collection, and space allocation available for the band saw and accompanying materials.

4.3 Space Allocation/Dust Collection

Consider the largest size and length of wood or other materials which will be processed through your machine. Leave ample space around the machine for the operator to handle both the equipment and the materials being cut. Leave enough space around the machine to open or remove doors/covers as required by the maintenance described in the owner's manual. Allow enough space for proper dust collection from your machine. For optimal operation, ensure that your machine is located in a dry environment free from excessive moisture, extreme weather conditions, hazardous chemicals, or airborne abrasives.

4.4 Electrical Requirements

Place your machine near an existing power source with the appropriate voltage required to operate your machine. Ensure that all power cords are protected from traffic, moisture, chemicals, or other hazards. For your safety, have a qualified electrician assess your electrical needs and grounding. If you have any doubts about your own ability to do so. We DO NOT recommend that you use an extension cord to supply power to your machine.

4.5 Lighting

Ensure that the lighting your machine is placed under is sufficient to safely perform regular operation and maintenance. Any glares, shadows, or strobe lighting which may distract or prevent the operator from safely operating the machinery should be removed from the working area.

4.6 Machine Weight/Load

Ensure that the surface where your machine is located can bear the full weight of your machine as well as any additional equipment which may be placed on the machine. Also consider the

weight of the operator and any materials which may be stored around the machine when selecting a location for your machine.

4.7 Unpacking Your Machine

To unpack your machine, you will need tin snips, a knife, and a wrench.

1. Using the tin snips, cut the banding that is securing the machine to the pallet (if fitted).
2. Remove the box from the CNC machine if fitted and any other packaging material. The parts ordered with the machine will be packed on or inside the machine.

NOTE

The machine is heavy. If you have any doubt about the described procedure, seek professional assistance. Do not attempt any procedure that you feel is unsafe or that you do not have the physical capability to achieve.

3. Use a forklift with sufficient lifting capacity and forks that are long enough to extend the complete width of the machine.

NOTE

Obtain a 7000 lbs. forklift with six (6) foot fork extensions.

4. Remove the securing bolts that attach the machine to the pallet (if fitted).
5. Approaching the machine from the side, lift the machine on the frame taking care that there are no cable or pipes around the forks.
6. Move the machine to the required position and lower gently to the floor.

Swift Vacuum Owner's Manual

NOTES:

5.0 Assembly and Setup

5.1 Electrical Connection for the Machine

A cable is not supplied; the proper cable will depend on local wiring codes and the electrical supply. When installing, ensure the power supplied to the machine is 220v (220 Volts) single phase or three-phase (depending on machine configuration). Amperage should be determined based on the vacuum pumps and the machine configuration.

When wiring the machine to the electrical system, keep the cable as short as possible and the cable should not be allowed to run along the floor as this will cause a trip hazard.

1. Access the front panel of the electrical cabinet.
2. Locate the two (2) cable ports on the right side of the electrical cabinet.
3. Insert the power cord through the port (Figure 5-1) nearest to the front of the cabinet.
4. Connect the red power cables to the main disconnect.
5. Connect the green ground cable to the ground lug.



Figure 5-1: Cable Ports

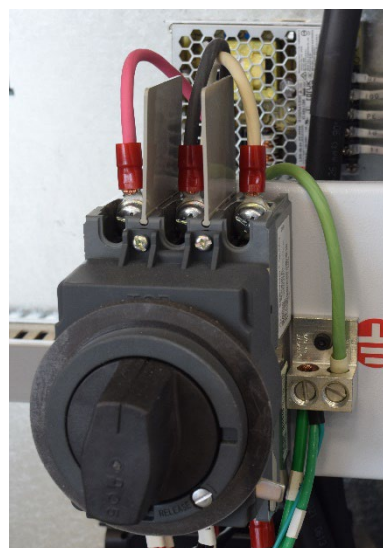


Figure 5-2: Main Disconnect and Ground Lug (3-Phase)

NOTE

A qualified electrician must carry out the electrical installation.

5.2 Vacuum Pump Installation

The vacuum pump provides the suction necessary to hold projects to the vacuum table. The vacuum pump should be installed prior to operation.

1. Locate the two (2) cable ports on the right side of the electrical cabinet.
2. Insert the vacuum power cord through the port to the right of the electrical power cord.
3. Connect the green ground wire to the ground terminal.
4. Strip the power cables and attach spade terminals.
5. Connect the spade terminals to the contactor.
6. Verify all connections are correct and close the electrical cabinet.
7. Remove the lid from the power box on top of the vacuum pump.
8. Strip all cords and attach ring connectors.
9. Attach a spade terminal to the green ground cord.
10. Connect the power cords to the designated terminals.
11. Attach the green ground cable to the ground terminal.

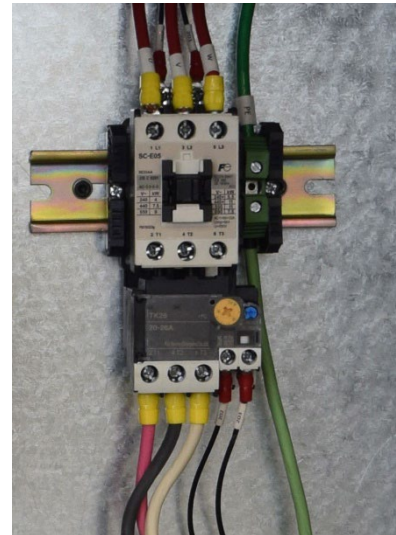


Figure 5-3: Vacuum Pump Contactor with electrical wires and ground attached

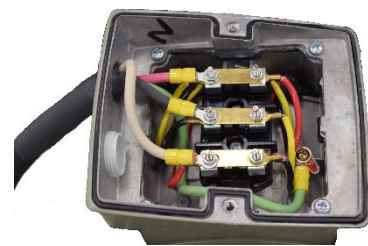


Figure 5-4: Vacuum Pump Power Box with electrical wires and ground attached

5.3 Water Pump Installation

The water pump ensures the spindle does not overheat. The water pump must be connected prior to operation.

Swift Vacuum Owner's Manual

1. Connect one pipe to the water pump and the other pipe will be placed in the water container for the return water. It is not important which pipe is used as the return.
2. Fit the 90-degree connector to the pump. Connect one of the pipes to the water pump by pushing it into the 90-degree connector. Lightly pull on the pipe to ensure that it is connected correctly.
3. Fill a container about $\frac{3}{4}$ full of clean distilled or de-ionized water.
4. Lower the water pump into the container ensuring that it is the correct way up (water inlet lowest) and place the water return pipe into the container.

NOTE

For CNC Machines operating in the Northern or Cold Regions, the operator can use a 50/50 mix of Distilled Water/De-ionized Water with Glycol Anti-Freeze.

The logical position for the water container is just behind the control box close to the caterpillar track. Ensure that it is close to the machine as you do not want to kick the container and spill the water. Once the assembly is complete and the water pump electrical connection has been made (plug the pump into the machine water pump socket), lift the water return pipe up and check that the water is flowing. Place the lid onto the container to keep dust and dirt out of the container. Check the container periodically as the water will evaporate.

NOTE

Operating the spindle without cooling could cause damage and failure.

NOTE

If your shop is subject to freezing temperatures, antifreeze must be added to the cooling water.

NOTE

A qualified electrician must carry out the electrical installation. Lower the water pump into the container ensuring that it is the correct way up (water inlet lowest) and place the water return pipe into the container. The logical position for the water container is just behind the control box close to the caterpillar track. Ensure that it is close to the machine as you do not want to kick the container and spill the water. Once the assembly is complete and the water pump electrical connection has been made, plug the pump into the machine water pump socket, lift the water return pipe up and check that the water is flowing. Place the lid onto the container to keep dust and dirt out of the container. Check the container periodically as the water will evaporate.

NOTE

If water is not flowing or is slow, reverse the hoses on the pump and flow should regain, sometimes the system will create an air bubble during shipping causing vapor lock.

5.4 Fitting the Dust Hose

1. Fit the dust hose to the dust shroud and secure with a clamp. Ensure that it is tight so that it does not detach during production.
2. Fit the shroud to the router head. Adjust the shroud so that the brushes are even with the tip of the router bits that you will be using.



Figure 5-5: Dust Collection Components

- | | |
|----------------|-----------------------------|
| 1. Dust Shroud | 3. Dust Shroud Bracket |
| 2. Latch | 4. Dust Hose (not included) |

NOTE

If it is too low the brushes may drag on the job and could be cut by the router bit. If it is too high and is not in contact with the job suction may not be optimal. Once adjusted, tighten the clamp with the Allen screw.

-
3. The router head will move all the way across the table and the dust hose will follow the router head.

NOTE

If there is insufficient slack, the hose may break or damage the dust shroud. It is suggested that the hose be suspended from the ceiling of the facility with sufficient slack so that it will not restrict movement. It will also be out of the way and not cause a trip hazard.

5.5 Assembling the Controller

Fit the cable to the controller and ensure the screws are finger tight.



Figure 5-6: Handheld Controller

- | | |
|------------------------|---------------------|
| 1. 50-Pin Serial Cable | 3. Keypad |
| 2. USB Cable Port | 4. Operating Screen |
| 5. USB Port | |

NOTE

A USB Drive fits into a slot on the top of the handheld controller.

5.6 Fitting the Router Bit into the Router Head

NOTE

Before changing or fitting the router bit always verify the Emergency Stop button is engaged and the router bit has come to a full stop.

NOTE

Collets and spindle collet holes must be cleaned regularly. Ensure that the slots in the collets are free of sawdust as sawdust builds up and will stop the collet compressing. If the collet or spindle holes are not clean, the router bit may not run true, and this will affect the performance of your machine.

1. Select a router bit and the relevant collet.
2. Fit the collet into the spindle nut. Press the collet into the spindle nut until it snaps into place.

NOTE

The router bit must not be fitted into the collet until the collet has been fitted into the spindle nut. With the router bit fitted into the collet the collet cannot compress and snap into the spindle nut. The face of the collet and the face of the spindle nut will be close to flush.



Figure 5-7: Collet



Figure 5-8: Spindle Nut

NOTE

To remove the collet, hold the spindle nut and press the collet on the side. The collet will compress and pop out. Do not try to remove the collet while a cutter is fitted as the collet will not compress and pop out.

3. Fit the spindle nut and collet assembly onto the spindle thread by hand.
4. Press the bit into the collet but note that the flute of the router bit must not be inside the collet and should be a minimum of 1/16 inch outside the collet. Hold the router spindle with the supplied wrench and tighten the collet with a second wrench. Do not overtighten.

NOTE

Use this process for all other router bits that you need to fit but you will have to change the collet if the shank of the router bit is a different size.

5.7 Controller Button Functions

NOTE

There is a comprehensive manual for the handheld controller. Below is a list of the main key functions. The controller may vary from the handheld controller shown below.

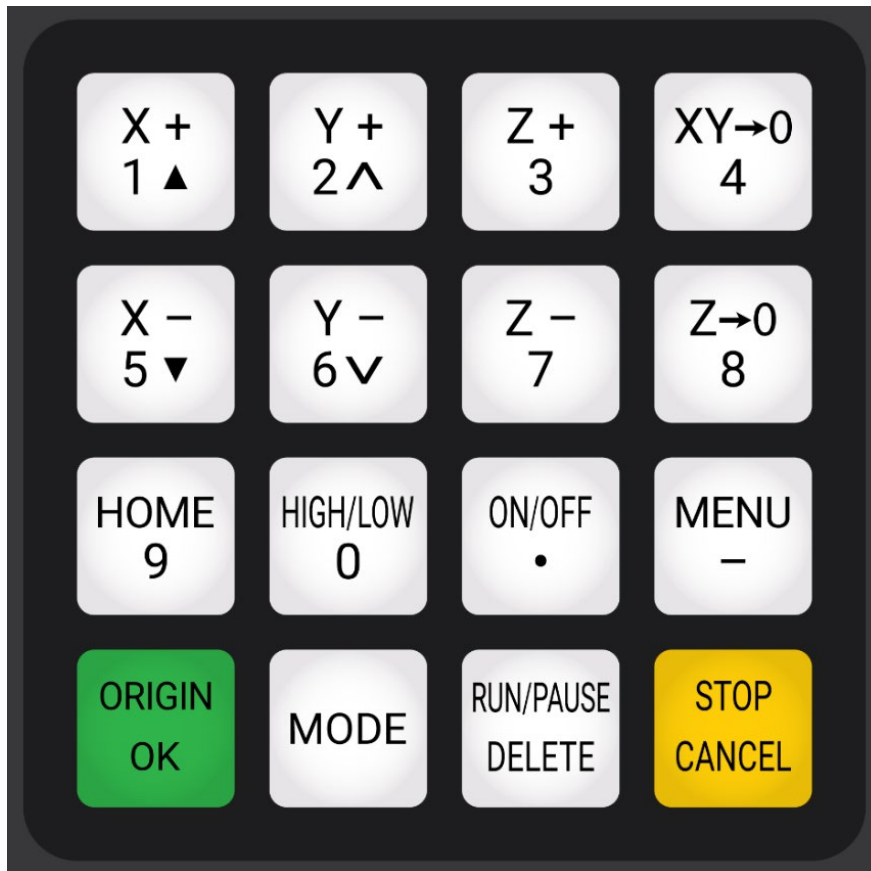


Figure 5-9: A11E Handheld Controller Keypad

X+/1 - Moves the gantry in the X direction away from the home end of the bed.

Y+/2 - Moves the gantry in the Y direction away from the home end of the bed.

Z+/3 - Moves the router head in the Z (UP) away from the table surface.

X Y - 0/4 - Sets the machine origin.

Swift Vacuum Owner's Manual

X-/5 - Moves the gantry in the X direction towards the home end of the bed.

Y-/6 - Moves the router head in the Y direction towards the home end of the bed.

Z-/7 - Moves the router head in the Z (DOWN) towards the table surface.

Z-0/8 - Sets the tool to the Zero surface (Tool Touch Off).

HOME/9 - Causes the machine to move to the Home position, first in the Z-Axis, followed by X and then Y (Home is a mechanically determined position using mechanical switches/sensors).

ORIGIN/OK - Use to accept commands (ON); Origin causes machine to go to the machine origin.

MODE - Toggles between the three (3) jogging modes: Continuous, Step, or Distance.

RUN/PAUSE DELETE - Used to load a program from either the USB drive or internal memory, to pause a program during operation, or delete a program file.

STOP/CANCEL - Stops a running program or cancels commands.

6.0 Operation

6.1 Turning On the Machine

Before the machine is turned on, remove all tools and other objects from the worktable.

1. Release the Emergency Stop by twisting clockwise until it pops out.
2. Turn the Main Power Isolation Switch clockwise to the On position.



Figure 6-1: Emergency Stop



Figure 6-2: Main Power Switch

3. Turn the Main Power Key Lock clockwise from 0 (the off position) to the 1 (the on position).

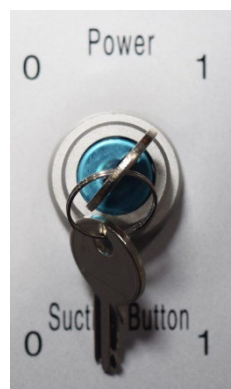


Figure 6-3: Main Power Key Lock



Figure 6-4: Start Button and Power On Light

4. Press the Start button that will turn power on the machine, Power On Light will appear.

Swift Vacuum Owner's Manual

5. To turn the vacuum on, turn the switch to the right.

Pressing the green button will also power the controller and the display will light up. The screen will display *Go to Home?*. Verify the table surface is clear of obstructions and press the green **ORIGIN/OK** button.

6. The router head will move to the Home position on the table.

NOTE

Home is a mechanical position that is a constant and is determined by switches on each of the three (3) axes.

X+ - Across (from left-to-right when standing in front of the machine).

Y+ - Length (from front-to-back when standing in front of the machine).

Z+ - Vertical (Up) By pressing HIGH LOW/0 and MENU/- the display will change to AX+0, AY+0, and AZ=0.

When the X, Y, and Z have an A in front, this denotes that the dimensions displayed are about the machine's home position. When the X, Y, and Z values are displayed with a number (1-9) this indicated the dimensional relationship of the machine from the machine Origin.

6.2 Moving the Router Head

There are three (3) different methods to move the router head:

1. **Continuous Mode** – Press the **MODE** button until *Continuous* is displayed. The display will show (on bottom row of the screen) the changing location of the router head as it moves location. By holding **X+** button down, the machine will move constantly until the button is released. This is the same for X-, Y+, Z+, and Z-. The **HIGH LOW** button determines the speed of the jogging moves.

2. **Step Mode** – Press the mode button until *Step* is displayed. With *Step* selected, each time **X** or **Y** button is pressed it will move the router head by 0.5 mm in high setting and 0.1 mm in the low setting.
3. **Distance Mode** – Press the **MODE** button a third time and *Distance* is displayed. This allows you to input a position into the controller that you want the router spindle to move to. As an example, if you want to move the router spindle 100 mm from the home position in the X and / or Y-Axis.
 - a. Press the **MODE** button until *Distance* is displayed.
 - b. Type in *100* and press **OK**.
4. **Pressing the X+** - button will now move the router 100 mm in the X+ axis. The router head also moves the set distance in the X+, X-, Y+, and Y- depending on the button that is pressed. To move the router head in the Z-Axis, press the Z+=/3 (UP) or the Z-/7 button (DOWN). By pressing any of the other X, Y, or Z+ or – buttons the router head will move 100 mm in the selected direction.

6.3 Jogging Speed

Select between a low or high speed. Pressing the **HIGH LOW / 0** button toggles between the two (2) speeds. The high-speed jog setting is approximately four (4) times the speed of the low-speed jog setting.

6.4 Setting the Work Envelope

The Work Envelope is a volume that defines the movement limits of the router spindle. The X0, Y0 corner of the work envelope is determined by the machine's Home Position. The X+ and Y+ limits of the work envelope are determined by the Table Size: Settings (MENU/MACHINE SETUP/TABLE SIZE) and provide the soft limits for the machine. The Table Size settings prevent the possibility of the spindle assembly/gantry from being jogged into the machine's frame.

Ensure that the controller display is indicating the Machine Coordinates. Those numbers correspond to the machine Home position that is determined by physical limit switches. Machine Coordinates are indicated on the screen by the designating AX, AY, or AZ. If the Machine Coordinates are not being displayed, depressing the **HIGH/LOW** and **MENU** buttons together will toggle between the machine coordinates and origin coordinates (e.g., 1-9).

Swift Vacuum Owner's Manual

1. Select Low Speed by pressing the **HIGH LOW / 0** button. Select *Continuous* by pressing the **MODE** button until *Continuous* is displayed. The position of the router head as it changes will be shown at the bottom of the display. Move the router spindle to the home position by pressing the **HOME** button.
2. Move the router head to the max position by pressing the **X+** button until the router spindle stops. Note the displayed AX= value.
3. Press the **Y+** button and hold until the router gantry stops moving, note the displayed AY value.
4. Typically, on the Laguna Swift 4 x 4 CNC machine the work envelope will be 1300 mm (51.181 in) x 1300 mm (51.181 in). Work envelopes vary by machine model.
5. Machining can only be performed if the tool path center lines fall within the work envelope. If an error message is displayed while trying to execute a program indicating an over travel error in one of the axes, executing the program would require that a tool path fill outside of the machine's Work Envelope.

Please note that the selection of the origin also effects placement of the program within the work envelope.

6.5 Using the Vacuum Table

The vacuum table has six (6) zones and the configuration can be set to suit the type of work that you will be producing. Each zone is controlled by a switch that is located at the front of the machine. The table has two (2) holes in each zone that extract the air and generate the vacuum. The table has grooves that ensure the air is extracted evenly across the zone. To seal the zone from leakage, a foam rubber gasket is pressed into the outer grooves. The gasket is compressed by the spoil board (sometimes called sacrificial board) as the vacuum is applied. T-Slots are also provided to allow you to clamp jobs/spoil boards to the table should it be required.



Figure 6-5: Vacuum Table

NOTE

The better the vacuum created, the more securely the parts will be held in place. Follow the below instructions to obtain optimum results.

6.6 Fitting the Foam Rubber Gasket

It is important that the foam rubber gasket is pressed evenly into the groove in the vacuum table around the zone that you are constructing. To ensure a good seal, it is strongly recommended that the gasket is turned in at the beginning (as shown). The gasket tends to stretch while fitting and over time it may relax and shorten. The extra length of gasket allows you to reset it and make the seal again. If the initial turn is not put in place, there is no margin for error, and you may have to discard a complete length just for being one inch short. It is recommended that you initially create three (3) zones, each one completely across the table. You can change the configuration at a later stage.

NOTE

Do not stretch the foam rubber gasket while you are fitting it into the groove in the vacuum table.

6.7 Spoil Boards

The Spoil Board has two (2) functions:

1. **To protect the vacuum table from the cutters** - Set the depth of the cutter a few thousandths of an inch deeper than the job thickness. Without a spoil board, the machine would cut into the vacuum table.
2. **To transfer the vacuum from the table to the job** - The spoil board must be porous to allow air to be sucked from the underside of the job. Inexpensive Medium-Density Fiberboard (MDF) is the best material for this function.

6.8 Spoil Board Preparation

When you purchase your MDF spoil board it should be no thinner than $\frac{3}{4}$ inch. The thicker the MDF the better the suction that is created. However, it is not recommended that your spoil board be thicker than one (1) inch.

The MDF that you purchase will not be flat and the machine will be cutting to accuracy in the order of a few thousandths of an inch so you will have to machine the spoil board flat. After your spoil board has been skimmed many times is $\frac{1}{2}$ inch thick discard it and start a new spoil board. The spoil board edges are very porous and must be sealed. Hard candle wax is recommended as it contains no water. Never use a water-based product to seal the edges of the board as this will make the board grow and it will be unsuitable as a spoil board.

NOTE

Some glues contain water and can affect the edges of the spoil board.

NOTE

Do not confuse flatness with bow. If the board is bowed the vacuum may not pull the board down and you will lose the vacuum. Never use a bowed board as a spoil board.

1. Cut your spoil board to the size of the bed of the machine.
2. Place the spoil board on the vacuum table. Prior to placing the spoil board onto the vacuum table, the table is perfectly clean, free from sawdust and dirt. If there is sawdust etc. on the table, it will change the height of the spoil board and it will not be flat. It is strongly recommended that you do not wipe or brush the table clean but use a handheld blower. Do not use a vacuum cleaner as it may draw the foam seal out of the groove and damage it.

NOTE

At least two (2) people are required to load a spoil board. Never put the edge of the board on the vacuum table and push it across. The foam rubber gasket will be damaged and no longer provide a vacuum seal. Lift the board into place and lower it onto the vacuum table in the correct position.

3. Turn on the vacuum.
4. Fly cut the total surface of the spoil board.

NOTE

Only remove the minimum to achieve a flat surface over the complete surface. You will have to skim the surface several times during the life of the spoil board to clean it up and you should get into the habit of only skimming the minimum off the surface.

5. Once the face is flat, remove the vacuum, turn the spoil board over and repeat the process for the other spoil board.

6.9 Precautions Regarding Spoil Boards

Spoil boards are porous and will absorb moisture. Over time, the absorption of moisture will change the dimensions of the board. Day-to-day changes are normally insignificant and will occur across the entire board evenly. However, if liquids are spilled on the board, it will be absorbed and cause the board to grow in the spillage area. Do not allow the board to become wet. If an accident should happen, remove the board from the machine and allow it to dry. Drying may take several days. Meanwhile, make use of a new board. Once the wet board has completely dried it may be possible to recut and reuse. If the board cannot be cut flat, it should be scrapped.

6.10 Vacuum Table T-Slots

The vacuum table has nine (9) T-Slots to enable fixtures and jobs to be clamped directly to the table. Clamps are provided, but the table must be protected with a packer when using jacking bolts. If the jacking bolts meet the plastic of the table, the plastic will be damaged. The packer must be as large as possible to spread the load on the plastic of the table.

T-Slots are also provided at the end and sides of the table and can be used for clamping jobs and fixtures.

6.11 Fitting the Touch Off Puck

The touch off puck plugs into the front of the machine and is stored in the puck holder.

6.12 Automatic Z Origin Point (Tool Touch Off Point)

The machine is provided with an automatic tool height adjustment. Place the touch off puck on the clean spoil board directly under the cutter. To activate the automatic tool height adjustment, press **MENU** and **ON/OFF** key at the same time on the control pad. This will cause the cutter to move slowly down. Once the cutter touches the touch off puck, electrical contact is made and the cutter will move up and away from the touch off puck. The machine now knows the height of the cutter.

6.13 Manual Z Origin Point (Tool Touch Off Point)

1. Fit a flat bottom router bit to the spindle.
2. Jog (Z) the tip of the tool down so that it is just above the top of the spoil board using the *Continuous* mode.
3. Step down in slow mode (0.1 mm or 0.004 inches each time the button is pressed) while turning the router collet by hand in the reverse direction. When you feel pressure, stop jogging down.



DO NOT turn the router bit by hand as it is sharp and could cause injury.

4. Select the distance mode and enter 0.0254 mm (0.0001 inches). Press **Z+** (UP) and rotate the cutter in the reverse direction until the cutter is free to move and there is no drag. The cutter is now within 0.001 inches above the spoil board.
5. Once the router bit is at zero press the **Z-0/8** button to set the zero point.
6. Jog the router bit up or press the origin button to move the router bit up and to the origin point.

6.14 Setting the Spoil Board on the Vacuum Table

To move the router head to the spoil board corner position:

1. With the router head in the home position, drop the router bit to just above the spoil board top face as described earlier (Z-Axis).
2. Use the distance command as described earlier (press mode, toggle through to distance) to set the X and Y position to 40.39 mm.
3. Press **X+**.
4. Once the router head has stopped moving press **Y+**.
5. The point of the router bit is now located over the point where the corner of the spoil should be.
6. You may need to move the router bit lower so that it is closer to the top surface of the spoil board by pressing the **Z-** button.
7. Press the top right-hand button **XY-0/4** this will set the origin and the machine now has a new datum point which will be the X=0/Y=0 in your design program.
8. Adjust the board until it is parallel with the edges of the vacuum table and the corner is directly under the router bit. Vacuum can now be applied to the spoil board.

6.15 Fitting a Job to the Spoil Board

One can use double-sized tape to attach the job to the spoil board. If you are using double-sized tape, ensure that the spoil board and the job are clean and do not have saw dust or chips as this will affect the ability of the tape to hold the job securely. Only use the smallest amount of double-sided tape as it will make it easier to remove the job once machined.

6.15.1 Removing the Job from the Spoil Board

If necessary, carefully pry the job off the spoil board with a wide blade putty knife or similar tool.

6.15.2 Fitting the Job to the Table using the T-Slots

It may be convenient to clamp the job to the spoil board with table clamps. Note that this attachment method can only be used if the outside edges are not being machined. When using the clamps, place a piece of packing under the jacking bolt to protect the bed of the machine.

7.0 Resetting the Origin Point

1. Bring the router head to the origin point by pressing the **ORIGIN OK** button.
2. Lower the router bit by pressing **Z-** so that it is just above the spoil board.

NOTE

Note the position of the tip of the router bit point and you will probably find the origin point will have to be adjusted.

3. Jog the point over so that it lines up with the edge of the spoil board in the X-axis.
4. Jog the point over so that it lines up with the edge of the spoil board in the Y-axis.
5. Reset the origin point by pressing the top right-hand button **XY-0/4**. This will set the origin and the machine now has a new datum point.

7.1 Spindle Speed Control

Only three (3) buttons are operator accessible:

ARROW UP, ARROW DOWN, and STOP KEY.

ARROW UP Key is used to raise the spindle speed.

ARROW DOWN Key is used to lower the spindle speed.

The Stop Key is available to stop the spindle during a program activation.

Display reads in hertz, 200hz = 12,000, 300hz = 18,000, 400hz = 24,000.

7.2 Loading a Program into the Machine

NOTE

The USB slot is on top of the controller.

Swift Vacuum Owner's Manual

1. Load your program into your USB drive.
2. Fit the USB into the USB slot in the controller.
3. Press the button **RUN/PAUSE DELETE**. The display will show *U disc*.
4. Press the **OK** button. The contents of the USB drive will be shown on the screen.
5. Use the arrow keys to select the file to load into the controller.
6. Press **OK** button.
7. Once the code/program has been downloaded the machine will start to operate.

NOTE

Ensure all personnel are clear of the machine as the spindle will start to turn and could cause injury.

8. The router will just cut the surface of the spoil board the distance that you set in the design software. Laguna suggests 1.6 mm (1/16 inches) and cut the outline of the job. This will give the location of the part on the spoil board.

8.0 Maintenance and Troubleshooting

As with any machine, conducting regular maintenance will ensure optimal performance.

NOTE

If you are operating within a Quality System Certified Facility (ISO/QS 9000, TS-16949, etc.), be advised to incorporate the daily and weekly maintenance checks into the preventative maintenance protocol of the facilities Quality System.

8.1 Controller Settings

The controller settings are calibrated and set to the correct values in production. These processes are documented in Sections 6 and 7 in the event it becomes necessary to recalibrate and reset the values.

8.2 Daily Checks

1. Clean the machine and lubricate unpainted surfaces with Teflon lubricant. Wipe off any excess and buff with a dry polishing cloth. This will reduce the likelihood of rust forming.
2. Check cutter teeth for chips and dullness.
3. Inspect the overall machine for damage and loose or worn parts.

8.3 Weekly Checks

1. Clean the cutters.
2. Check cutter teeth for chips and dullness.
3. Inspect the overall machine for damage and loose or worn parts.
4. Check the dust extraction for blockages and any large bits that could cause blockages.

8.4 Oiling the Machine

The machine is provided with a central oiler. Do not over lubricate the machine as excess oil attracts dirt and sawdust. One pump of the oiler is recommended at least once a month to keep your machine lubricated; more lubrication may be required depending on frequency of machine use. When the oil tank is low, fill with a good quality SAE 30 weight oil.



Figure 8-1: Oil Reservoir

9.0 Troubleshooting

Problem	Possible Solution
Machine will not start	<ol style="list-style-type: none"> 1. Verify the start switch is being pressed full in. 2. Verify the red stop switch is fully out. 3. Verify the electrical power cord is plugged into the power outlet. 4. Verify the electrical supply is on (reset the breaker). 5. With the power disconnected from the machine, check the wiring to the plug is correct. 6. Verify the rubber insulation is stripped enough and is not causing a bad connection. Verify all the screws are tight.
Machine will not stop	<p>This is a very rare occurrence as the machine is designed to be fail-safe. If it should occur and you cannot fix the fault, seek professional assistance. The machine must be disconnected from the power and never run until the fault has been rectified.</p> <p>Internal breaker faulty; replace the breaker.</p>
Motor tries to start but will not start	<ol style="list-style-type: none"> 1. With the power disconnected from the machine, try to turn the spindle by hand. If the spindle will not turn, check the reason for the jamming. 2. Motor faulty; replace the motor.

Swift Vacuum Owner's Manual

Problem	Possible Solution
Motor Overheats	The motor is designed to run hot, but should it overheat it has an internal thermal overload protector that will shut it down until the motor has cooled and then it will reset automatically. If the motor overheats wait until it has cooled and restarted. If the motor shuts down consistently check for the reason. Typical reasons are dull cutting tools, no water in the coolant tank, blockage in the coolant pipe and excessive ambient temperature.
Squeaking Noise	Check the bearings.
Spindle Slows Down During a Cut	<ol style="list-style-type: none"><li data-bbox="834 915 1406 993">1. Dull cutting tools. Replace the tool or have it re-sharpened.<li data-bbox="834 1024 1406 1102">2. Feeding the wood too fast. Slow down the feed rate.
Machine Vibrates	Machine not level on the floor. Re-level the machine ensuring that it has no movement.

10.0 Warranties

Dealer Machinery Warranty

New woodworking machines sold by Laguna Tools carry a two-year warranty effective from the date of dealer invoice to customer/end-user. Machines sold through dealers must be registered with Laguna Tools within thirty (30) days of purchase to be covered by this warranty. Laguna Tools guarantees all new machines sold to be free of manufacturers' defective workmanship, parts, and materials. We will repair or replace, without charge, any parts determined by Laguna Tools, Inc. to be a manufacturer's defect. We require that the defective item/part be returned to Laguna Tools with the complaint. The end-user must request a Return Material Authorization (RMA) number from Customer Service. Include the RMA number with any and all returned parts/components requesting warranty coverage*. Any machines returned to Laguna Tools must be returned with packaging in the same manner in which it was received. A part or blade is being returned must have adequate packaging to ensure it is not damaged during shipping. In the event the item/part is determined to be damaged due to lack of maintenance, cleaning, or misuse/abuse, the customer will be responsible for the cost to replace the item/part, plus all related shipping charges. This limited warranty does not apply to natural disasters, acts of terrorism, normal wear and tear, product failure due to lack of maintenance or cleaning, damage caused by accident, neglect, lack of or inadequate dust collection, misuse/abuse or damage caused where repair or alterations have been made or attempted by others.

* The issue of an RMA number is for reference only; it DOES NOT indicate acceptance of the warranty claim.

CNC Limited Warranty

New CNC machines sold by Laguna Tools carry a one-year warranty effective from the date of shipping. Laguna Tools guarantees all new machines sold to be free of manufacturers' defective workmanship, parts, and materials. We will repair or replace, without charge, any parts determined by Laguna Tools, Inc. to be a manufacturer's defect. If the defective item/part is determined to be damaged due to lack of maintenance, cleaning or misuse/abuse, the customer will be responsible for the cost to replace the item/part, plus all related shipping charges. This limited warranty does not apply to natural disasters, acts of terrorism, normal wear and tear, product failure due to lack of maintenance or cleaning, damage caused by accident, neglect, lack of or inadequate dust collection, misuse/abuse or damage caused where repair or alterations have been made or attempted by others.

Laguna Tools, Inc. is not responsible for additional tools or modifications sold or performed (other than from/by Laguna Tools, Inc.) on any Laguna Tools, Inc. woodworking machine. Warranty may be voided upon the addition of such described tools and/or modifications, determined on a case-by-case basis. Software purchased through Laguna Tools, Inc., is not covered under this warranty and all technical support must be managed through the software provider. Normal user alignment, adjustment, tuning, and machine settings are not covered by this warranty. It is the responsibility of the user to understand basic woodworking machinery settings and procedures and to properly maintain the equipment in accordance with the standards provided by the manufacturer.

Parts under warranty are shipped at Laguna Tools, Inc.'s cost either by common carrier, FEDEX ground service, or a similar method. Technical support to install replacement parts is primarily provided by phone, fax, e-mail or Laguna Tools Customer Support Website. The labor required to install replacement parts is the responsibility of the user. Laguna Tools is not responsible for damage or loss caused by a freight company or other circumstances not in our control. All claims for loss or damaged goods must be notified to Laguna Tools within twenty-four (24) hours of delivery.

Please contact our Customer Service Department for more information. Only NEW machines sold to the original owner are covered by this warranty.

Swift Vacuum Owner's Manual

For warranty repair information, call 1-800-332-4094.

Warning: No portion of these materials may be reproduced without written approval from Laguna Tools, Inc.

Copyright 2023 Laguna Tools, Inc.

No Modifications Allowed or Sold

Laguna Tools, Inc. is not responsible for additional tools or modifications sold or performed (other than from/by Laguna Tools, Inc.) on any Laguna Tools, Inc. woodworking machine. Warranty may be voided upon the addition of such described tools and/or modifications, determined on a case-by-case basis. Normal user alignment, adjustment, tuning, and machine settings are not covered by this warranty. It is the responsibility of the user to understand basic woodworking machinery settings and procedures and to properly maintain the equipment in accordance with the standards provided by the manufacturer. Parts, under warranty, are shipped at Laguna Tools, Inc.'s cost either by common carrier, FEDEX ground service or a similar method. Technical support to install replacement parts is primarily provided by phone, fax, e-mail, or Laguna Tools Customer Support Website. The labor required to install replacement parts is the responsibility of the user. Laguna Tools is not responsible for damage or loss caused by a freight company or other circumstances not in our control. All claims for loss or damaged goods must be notified to Laguna Tools within twenty-four (24) hours of delivery. Please contact our Customer Service Department for more information. Only new machines sold to the original owner are covered by this warranty.

For warranty repair information call 1-800-332-4094.

Swift Vacuum Owner's Manual

Laguna Tools Warranty

WARRANTY & REGISTRATION

Thank You!

Welcome to the Laguna Tools® group of discriminating industrial machinery owners. We understand that you have a choice of where to purchase your machines and appreciate the confidence you have in the Laguna Tools® brand.

Through hands-on experience, Laguna Tools® is constantly working hard to make innovative, precision products. Products that inspire you to create works of art are a joy to operate and encourage your best work.

Laguna Tools®
Imagination, Innovation, and Invention at Work

Warranty & Registration

Every product sold is warranted to be free of manufacturer's defective workmanship, parts, and materials. For any questions about this produce, the intended use or what it was designed for, customer service, or replacement parts, please contact our customer service department:

Laguna Tools® Customer Service
744 Refuge Way, Grand Prairie, Texas 75050, USA
1-800-234-1976
customerservice@lagunatools.com
www.lagunatools.com/why/customer-service/
8AM. To 5PM PSF. Monday through Friday

For warranty claims or to report damage upon receiving-please reach out to our warranty department:

Laguna Tools® Warranty Service
744 Refuge Way, Grand Prairie, Texas 75050, USA
1-800-234-1976
customerservice@lagunatools.com
www.lagunatools.com/policies/warranty
8AM to 5PM PST, Monday through Friday

Registration

To prevent voiding this warranty, all products sold must be registered within thirty (30) days of receiving the product. Registering the product will enable the original purchaser to receive notifications about important product changes, receive customer service, and be able to file a warranty claim against defective workmanship, parts, or materials.



Who is Covered

The applicable warranty covers only the initial purchaser of the product from the date of receiving the product. To file such claims, the original purchaser must present the original receipt as proof of purchase.

What is Covered

The warranty covers any defects in the workmanship of all parts and materials that make up the machine unless otherwise specified. Any part determined by Laguna Tools® to have a defect will be repaired or replaced (and shipped), without charge. The defective item/part must be returned to Laguna Tools® with the complaint and proof of purchase in the original packaging that it was received in. In the event the item/part is determined to be not covered by this warranty, the customer will be responsible for the cost to replace the item/part and all related shipping charges

Warranty Limitations

This limited warranty does not apply to natural disasters, acts of terrorism, normal wear and tear, product failure due to lack of maintenance or cleaning, damage caused by accident, neglect, or lack-of inadequate dust collection. The warranty may be voided against proof of misuse/abuse, damage caused where repair or alterations have been made or attempted by others, using the product for purposes other than those described as intended use (unless with consent by Laguna Tools®), modification to the product, or use with an accessory that was not designed for the product. It is the responsibility of the user to understand basic machinery settings and procedures and to properly maintain the equipment in accordance with the standards provided in this manual.

Length of Warranty

Machines sold for either commercial or industrial use have a one-year warranty. Wearable parts like throat plates, bandsaw guides, etc., have a ninety-day warranty.

Table A-1 Warranty Lengths

1 Year – Machines Sold for Commercial or Industrial Use
1 Year – Blades and Accessories outside or Machine Options
90 Days – Wearable Parts

Aside from being free of defects upon receiving, consumable parts, like cutters and abrasives, are not covered by this warranty unless otherwise stated by Laguna Tools®. These parts are designed to be used at the expense of the operator and are available for replacement or inventory purchase. The determination of a consumable part will be made on a case-by-case basis by Laguna Tools®.

Shipping Damage

Laguna Tools® is not responsible for damage or loss caused by a freight company or other circumstances not in the direct control of Laguna Tools®. All shipping-related claims for loss or damage to goods must be made to Laguna Tools® within twenty-four hours of delivery.

How to Receive Support

To file a warranty-claim please contact the warranty department at 1-800-234-1976. To receive customer service or technical support please contact the customer service or technical support please contact the customer service department at 1-800-332-4049. Parts, under warranty, are shipped at the expense of Laguna Tools® either by common carrier, FedEx ground services or similar method. Technical support to install replacement parts is primarily provided by phone, fax, email, or the Laguna Tools® Customer Service Support Website.



© 05/2023 Laguna Tools, Inc.

LAGUNA

Laguna Tools, Inc.
744 Refuge Way
Grand Prairie, TX 75050
800-234-1976
www.lagunatools.com

Copyright © 2023 Laguna Tools, Inc. All rights reserved.