

# LAGUNA

OWNERS'S MANUAL

## SGB-6



MSANSGB-6

**KEEP THIS MANUAL FOR FUTURE REFERENCE**

Thank you for investing in a SGB-6 by Laguna Tools. This sander is one of a family of unique machines proudly offered by Laguna Tools. Every Laguna machine is engineered for years of dependable service. Please feel free to contact Laguna Tools if you have a question or suggestion. We appreciate working with you and your choice of a Laguna Tools machine for your shop.

Regards,  
Torben Helshoj  
President & Founder Laguna Tools

This manual applies to the SGB-6. Enter the model number and serial number below for quick reference when ordering accessories, supplies or parts.

Model: \_\_\_\_\_ Date of purchase: \_\_\_\_\_

Serial: \_\_\_\_\_ Place of purchase: \_\_\_\_\_

**LATEST MANUAL:**

Below is a QR code which will direct you to the manual reference page, where the latest version of the SGB-6 manual is located on the Laguna Tools website. The online manual may have updates and information added after the printed copy was released. Scan the code with your smartphone or copy the URL link to be directed to the latest manual page to reference your specific machine and model.

<https://lagunatools.com/resources/product-manuals/#industrial>



**LAGUNA TOOLS**  
744 Refuge Way Suite 200  
Grand Prairie TX 75050  
800.234.1976  
[www.lagunatools.com](http://www.lagunatools.com)

# CONTENTS

1. INTRODUCTION	2
2. WARRANTY	4
3. SAFETY	5
2.1 SAFETY RULES	8
2.2 WARNING LABELS	9
4. MACHINE SPECIFICATIONS	10
3.1 INTRODUCTION	10
3.2 FEATURES	11
3.3 SPECIFICATIONS	12
5. INSTALLATION	12
4.1 UNLOADING	12
4.2 CLEANING MACHINE	12
4.3 POWER SUPPLY CONNECTION	13
4.4 DUST PORT CONNECTION	13
6. OPERATION INSTRUCTIONS	13
5.1 IDENTIFICATION BEFORE OPERATION	13
5.2 OPERATION	13
5.3 REPLACEMENT OF THE ABRASIVES	14
5.3-1 Brush type	14
5.3-2 Velcro type	15
5.4 ADJUSTMENT OF PROTECT FENCE	16
7. MAINTENANCE	17
6.1 MAINTENANCE PERSONNEL	17
6.2 WARNINGS FOR MAINTENANCE PERSONNEL	17
6.3 MAINTENANCE	17
8. ELECTRICAL WIRING DIAGRAM	19
9. ELECTRICAL PARTS LIST	21
10. MECHANICAL PARTS LIST	22

# WARRANTY & REGISTRATION

## Thank You!

Welcome to the Laguna Tools® group of discriminating industrial machinery owners. We understand that you have a choice of where to purchase your machines and appreciate the confidence you have in the Laguna Tools® brand.

Through hands-on experience, Laguna Tools® is constantly working hard to make innovative, precision products. Products that inspire you to create works of art are a joy to operate and encourage your best work.

Laguna Tools®  
Imagination, Innovation, and Invention at Work

## Warranty & Registration

Every product sold is warranted to be free of manufacturer's defective workmanship, parts, and materials. For any questions about this produce, the intended use or what it was designed for, customer service, or replacement parts, please contact our customer service department:

Laguna Tools® Customer Service  
744 Refuge Way, Grand Prairie, Texas 75050, USA  
1-800-234-1976  
customerservice@lagunatools.com  
www.lagunatools.com/why/customer-service/  
8AM. To 5PM PSF. Monday through Friday

For warranty claims or to report damage upon receiving-please reach out to our warranty department:

Laguna Tools® Warranty Service  
744 Refuge Way, Grand Prairie, Texas 75050, USA  
1-800-234-1976  
customerservice@lagunatools.com  
www.lagunatools.com/policies/warranty  
8AM to 5PM PST, Monday through Friday

## Registration

To prevent voiding this warranty, all products sold must be registered within thirty (30) days of receiving the product. Registering the product will enable the original purchaser to receive notifications about important product changes, receive customer service, and be able to file a warranty claim against defective workmanship, parts, or materials.



## Who is Covered

The applicable warranty covers only the initial purchaser of the product from the date of receiving the product. To file such claims, the original purchaser must present the original receipt as proof of purchase.

## What is Covered

The warranty covers any defects in the workmanship of all parts and materials that make up the machine unless otherwise specified. Any part determined by Laguna Tools® to have a defect will be repaired or replaced (and shipped), without charge. The defective item/part must be returned to Laguna Tools® with the complaint and proof of purchase in the original packaging that it was received in. In the event the item/part is determined to be not covered by this warranty, the customer will be responsible for the cost to replace the item/part and all related shipping charges

## Warranty Limitations

This limited warranty does not apply to natural disasters, acts of terrorism, normal wear and tear, product failure due to lack of maintenance or cleaning, damage caused by accident, neglect, or lack-of inadequate dust collection. The warranty may be voided against proof of misuse/abuse, damage caused where repair or alterations have been made or attempted by others, using the product for purposes other than those described as intended use (unless with consent by Laguna Tools®), modification to the product, or use with an accessory that was not designed for the product. It is the responsibility of the user to understand basic machinery settings and procedures and to properly maintain the equipment in accordance with the standards provided in this manual.

## Length of Warranty

Machines sold for either commercial or industrial use have a one-year warranty. Wearable parts like throat plates, bandsaw guides, etc., have a ninety-day warranty.

Table A-1 Warranty Lengths

1 Year – Machines Sold for Commercial or Industrial Use
1 Year – Blades and Accessories outside of Machine Options
90 Days – Wearable Parts

Aside from being free of defects upon receiving, consumable parts, like cutters and abrasives, are not covered by this warranty unless otherwise stated by Laguna Tools®. These parts are designed to be used at the expense of the operator and are available for replacement or inventory purchase. The determination of a consumable part will be made on a case-by-case basis by Laguna Tools®.

## Shipping Damage

Laguna Tools® is not responsible for damage or loss caused by a freight company or other circumstances not in the direct control of Laguna Tools®. All shipping-related claims for loss or damage to goods must be made to Laguna Tools® within twenty-four hours of delivery.

## How to Receive Support

To file a warranty-claim please contact the warranty department at 1-800-234-1976. To receive customer service or technical support please contact the customer service or technical support please contact the customer service department at 1-800-332-4049. Parts, under warranty, are shipped at the expense of Laguna Tools® either by common carrier, FedEx ground services or similar method. Technical support to install replacement parts is primarily provided by phone, fax, email, or the Laguna Tools® Customer Service Support Website.



© 05/2023 Laguna Tools, Inc.

# ADDITIONAL SAFETY RULES FOR THIS MACHINE

- 1) As with all machines, there is a certain amount of hazard involved with the use of this machine. Use the machine with the respect and caution demanded where safety precautions are concerned. When normal safety precautions are overlooked or ignored, personal injury to the operator can result.
- 2) **LIMITED WARRANTY.** This warranty does not apply to personal injury and defects due directly or indirectly to misuse, abuse, negligence or accidents, normal wear-and tear, repair or alterations outside our facilities, or to a lack of maintenance.
- 3) **IF YOU ARE NOT** thoroughly familiar with the operation of this machine, obtain advice from your supervisor, instructor or other qualified person. Or, please contact the company who sold the machine to you, and request for the correct instruction of operating. When you are not sure what the correction operation is, please do not use this machine.
- 4) **IF AT ANY TIME YOU ARE EXPERIENCING DIFFICULTIES** performing the intended operation, stop using the machine! Then contact the distributor's service department or ask a qualified expert how the operation should be performed.
- 5) **NEVER ALLOW UNSUPERVISED OR UNTRAINED PERSONNEL TO OPERATE THE MACHINE.** Make sure any instructions you give in regards to machine operation are approved, correct, safe, and clearly understood.
- 6) **NEVER OPERATE A MACHINE WHEN TIRED, OR UNDER THE INFLUENCE OF DRUGS OR ALCOHOL.** Full mental alertness is required at all times when running a machine.
- 7) **NEVER LEAVE TOOL RUNNING UNATTENDED. TURN POWER OFF.** DO NOT leave tool until it comes to a complete stop.
- 8) **MAKE SURE** wiring codes are recommended electrical connection instructions are followed, and that the machine is properly grounded.
- 9) **MAKE** all adjustments with the power "OFF".
- 10) **DISCONNECT** machine from power source when make repairs.
- 11) **KEEP** abrasives sharp and free of all rust and pitch.
- 12) **DO NOT** operate this machine when the guard is removed.
- 13) **KEEP** fingers and hands away from the cutting area.
- 14) **NEVER** start the machine with the workpiece in contact with the sanding head.
- 15) **CHECK MATERIAL** for defects before operating.
- 16) **MAKE SURE** the workpiece is free from nails and other foreign objects which could cause injury or damage to the abrasives.
- 17) **MAKE SURE** abrasives are properly secured to the machine, as explained in the instruction manual, before turning on power.
- 18) **REMOVE SHAVINGS** only with the power "OFF".
- 19) **KEEP HANDS** away from the top surface of the board near the feed rollers.
- 20) **BEFORE LEAVING** the machine, make sure the work area is clean.

- 21) **SHOULD** any part of your machine be missing, damaged or fail in any way, or any electrical component fail to perform properly, shut off switch and remove plug from power supply outlet. Replace missing, damaged or failed parts before resuming operation.
- 22) **ATTENTION!!** Before installation & operation, please make sure operators have been trained.

Proposition 65 Warning

Some dust created by power sanding, sawing, grinding, drilling and other construction activities contain chemicals known to cause cancer, birth defects or other reproductive harm. Some examples of these chemicals are:

- **Lead** from lead based paint.
- **Crystalline silica** from bricks, cement, and other masonry products.
- **Arsenic** and **chromium** from chemically treated lumber.

Your risk of exposure varies, depending on how often you do this type of work. To reduce your exposure to these chemicals, work in a well-ventilated area and work with approved safety equipment, such as face or dust masks that are specifically designed to filter out microscopic particles.

## 1. PREFACE

We would like to thank you for your purchase of the SGB-6. This machine is designed for sanding, brushing, grinding, graining, etc.

A wide variety of abrasive discs, brushes and other attachments are available from Laguna Tools to utilize the SGB-6 for a wide range of applications and materials. (800)-234-1976, [lagunatools.com](http://lagunatools.com).

This manual must be read and understood before starting the machine.

Use this manual for training. Keep near the machine as a reference guide.

Please note that slight variations may be evident from the ones shown in the present directions.

If questions arise which are not referred to in the manual, please contact Laguna Tools, (800)-234-1976, for more information.

**LAGUNA TOOLS**  
744 Refuge Way Suite 200  
Grand Prairie TX 75050  
800.234.1976  
[www.lagunatools.com](http://www.lagunatools.com)


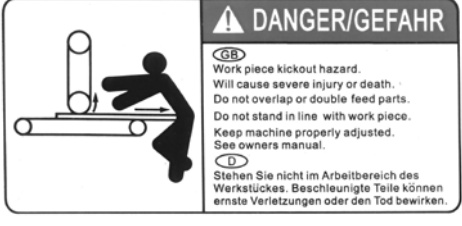
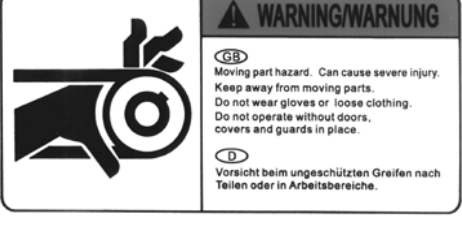
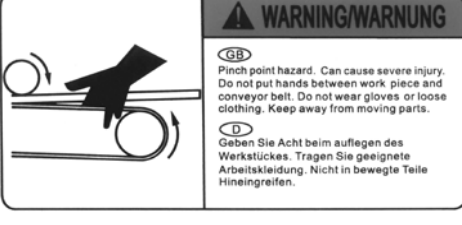

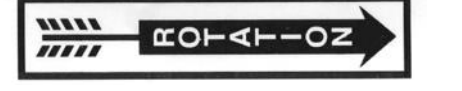
## **2. SAFETY**

### **2.1 SAFETY RULES**

1. Before installing, testing, or starting up the machine, read and memories these safety rules. Follow available safety instructions and safety rules carefully.
2. Ensure work area in order. Don't locate the machine in humid surroundings.
3. Keep work area properly lighted, clean, safe, and well ventilated.
4. Whenever possible use a dust collector with shaving hood to minimize health hazards.
5. All visitors should be kept a safe distance from the running machine.
6. Operation, maintenance and repairs must be carried out by trained and authorized personnel.
7. Proper apparel should be notice: Don't wear loose clothing, neckties, bracelets, which may get caught in the moving parts of the machine. Wear protective hair covering to contain long hair. Don't wear gloves to prevent injury when operating the machine.
8. Before starting up machinery which has moving parts, make sure that all protection devices such as fixed and moving guards are in good working order and are fitted in position.
9. Never carry out any work on moving parts: before carrying out work on such parts, make sure they are stopped or in the rest position and the power supply is switched off.
10. Do not work on live electrical components: before carrying out work on such components, make sure that the power is switched off the main switch on the electrical enclosure must be off.
11. Do not force the machine, it will do the job bettor and be safer at a rate for which it was designed.
12. Before restarting the machine after a stoppage. Make sure there is no person in danger zone.



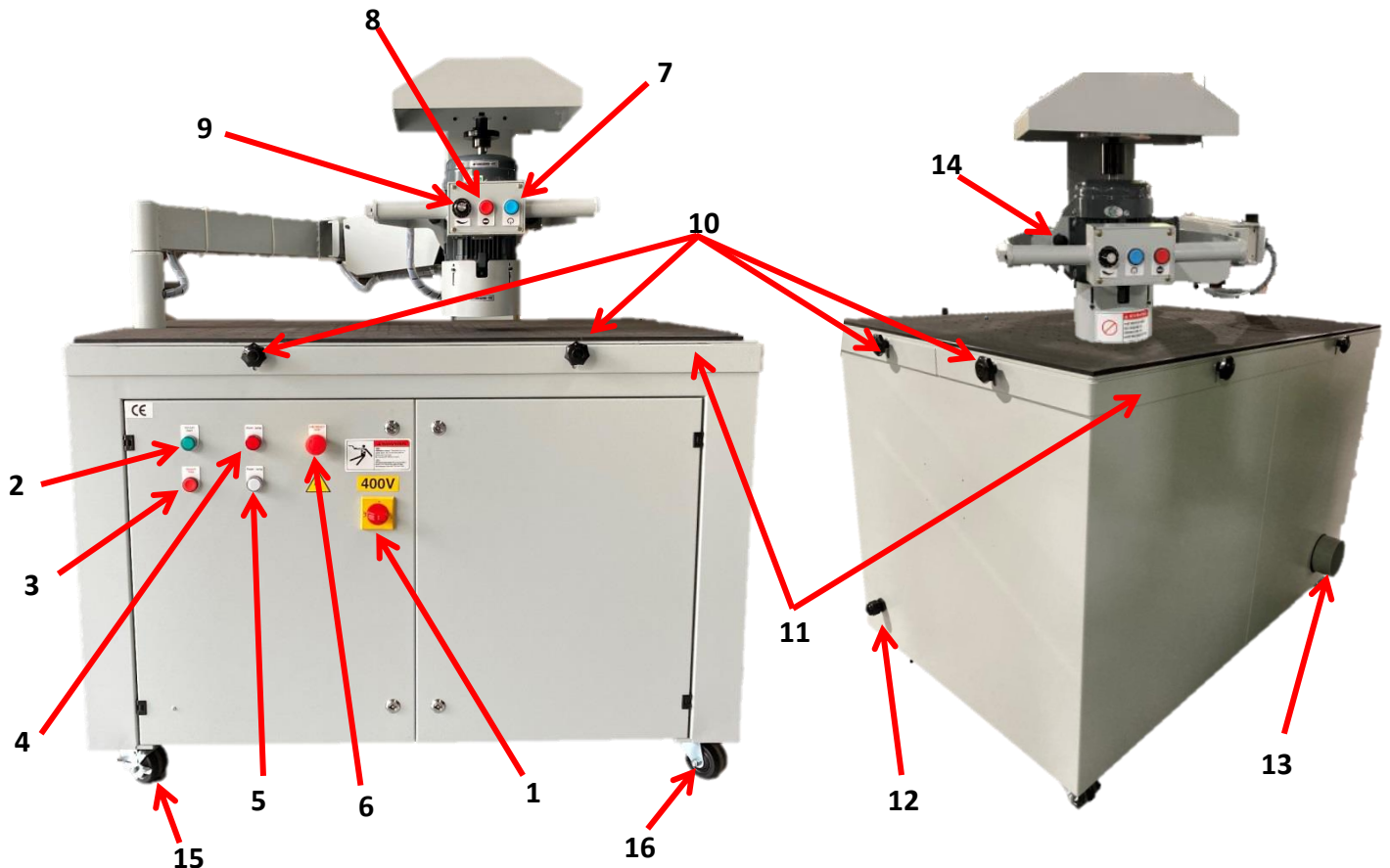
## 2.2 WARNING LABELS

FIGURES	TITLE	DESCRIPTION
 <p><b>WARNING/WARNUNG</b></p> <p><b>GB</b> Hazardous voltage. Can shock, burn or cause death. Do not severice before disconnecting power. Do not operate with door open.</p> <p><b>D</b> Vor Wartungsarbeiten Strom abschalten. Gefährliche Spannung kann ernste Verletzungen oder den Tod bewirken.</p>	<p><b>WARNING OF ELECTRIC SHOCK</b></p>	<ul style="list-style-type: none"> <li>● Hazardous voltage. Can shock, burn or cause death.</li> <li>● Do not service before disconnecting power.</li> <li>● Do not operate when the doors are open.</li> </ul>
 <p><b>DANGER/GEFAHR</b></p> <p><b>GB</b> Work piece kickout hazard. Will cause severe injury or death. Do not overlap or double feed parts. Do not stand in line with work piece. Keep machine properly adjusted. See owners manual.</p> <p><b>D</b> Stehen Sie nicht im Arbeitsbereich des Werkstückes. Beschleunigte Teile können ernste Verletzungen oder den Tod bewirken.</p>	<p><b>DANGER OF KICKBACK</b></p>	<ul style="list-style-type: none"> <li>● Work piece kick back hazard. It will cause severe injury or death.</li> <li>● Do not overlap or double feed parts</li> <li>● Do not stand line with work piece.</li> <li>● Keep machine properly adjusted.</li> </ul>
 <p><b>WARNING/WARNUNG</b></p> <p><b>GB</b> Moving part hazard. Can cause severe injury. Keep away from moving parts. Do not wear gloves or loose clothing. Do not operate without doors, covers and guards in place.</p> <p><b>D</b> Vorsicht beim ungeschützten Greifen nach Teilen oder in Arbeitsbereiche.</p>	<p><b>WARNING OF MOVING PARTS</b></p>	<ul style="list-style-type: none"> <li>● Moving parts hazard, it can cause severe injury.</li> <li>● Keep away from moving parts.</li> <li>● Do not wear gloves or loose clothing.</li> <li>● Do not operate without doors,</li> </ul>
 <p><b>WARNING/WARNUNG</b></p> <p><b>GB</b> Pinch point hazard. Can cause severe injury. Do not put hands between work piece and conveyor belt. Do not wear gloves or loose clothing. Keep away from moving parts.</p> <p><b>D</b> Geben Sie Acht beim auflegen des Werkstückes. Tragen Sie geeignete Arbeitskleidung. Nicht in bewegte Teile Hineingreifen.</p>	<p><b>WARNING OF PINCHED</b></p>	<ul style="list-style-type: none"> <li>● Pinch point hazard. Can cause severe injury.</li> <li>● Do not put hands between work piece and conveyor belt.</li> <li>● Do not wear gloves or loose clothing.</li> <li>● Keep away from moving parts</li> </ul>
	<p><b>ELECTRICAL WARNING LABEL</b></p>	<ul style="list-style-type: none"> <li>● This warning label indicated the location of electrical control system, and electrical components cabinet.</li> <li>● For electrical maintenance shall be made by qualified person. Do not leave cover or open doors until the power source has been OFF and machine has come to complete stop</li> </ul>
	<p><b>DIRECTION INDICATED LABEL</b></p>	<ul style="list-style-type: none"> <li>● This label is indicated the conveyor turning direction.</li> <li>● Please confirm the rotated direction of conveyor belt while the machine connected to factory power source</li> </ul>

### 3. MACHINE SPECIFICATIONS

#### 3.1 INTRODUCTION

1. Main power switch (power connected to the machine)
2. Vacuum start button (To start the vacuum hold-down function)
3. Vacuum stop button (To stop the vacuum hold-down function)
4. Alarm light (To indicate an emergency)
5. Power light (To indicate the power is connected to machine)
6. Emergency STOP button (To stop all operation of machine)
7. Sanding start button
8. Sanding stop button
9. Sanding speed adjust knob (adjust sanding RPM)
10. Fixture knob for fence (to adjust fence height)
11. Fence (reduces debris to operator)
12. Cable strain relief (secures power cable)
13. Dust port
14. Position pin with lock (When position pin is locked and sanding head can not be turned upside down)
15. Caster with brake
16. Caster without brake



## **3.2 FEATURES**

1. The main frame is fabricated and ribbed with heavy steel plate to minimize vibration and deflection.
2. Instantly deburring different shapes and/or thicknesses without re-setting the working dimensions of machine. Simply place the work piece on the table and debur them.
3. This machine can also be used for grinding, finishing and rounding edges with different abrasive materials and disc types.
4. The movable cantilever sanding head is easy to move and anywhere and any altitude in the working area for deburring the work pieces which are in irregular shapes and different thicknesses.
5. Disc type sanding head allows abrasive installed on the top and bottom. Head can pivot 180 degrees to quickly switch the top and bottom abrasives.
6. Powerful vacuum system efficiently holds the work pieces firmly.

### 3.3 DATA SPECIFICATIONS SGB-6

<b>Model No.:</b>	<b>SGB-6</b>
<b>Sanding head motor:</b>	<b>1HP</b>
<b>Number of sanding heads:</b>	<b>1 set (2), (allows abrasive installed on the top and bottom)</b>
<b>Type of sanding head</b>	<b>Disc/Brush</b>
<b>Disc diameter:</b>	<b>150mm</b>
<b>Table size:</b>	<b>1300 x 800mm</b>
<b>Table height:</b>	<b>920mm</b>
<b>Vacuum area:</b>	<b>350 x 250mm</b>
<b>Dust collecting area:</b>	<b>900 x 550mm (Must connect the dust collecting system) * Central area 350 x 250mm is vacuum hold-down area</b>
<b>Min work piece size:</b>	<b>100 x 70mm (May be larger subject to flatness, shape or other variables)</b>
<b>Max work piece thickness:</b>	<b>150mm (May be thinner subject to the abrasive/brush or application)</b>
<b>Machine size:</b>	<b>L: 1310 x W: 810 x H: 1560mm</b>

## 4. INSTALLATION

### 4.1 UNLOADING

You must use a forklift for loading, unloading and moving the machine. While lifting the machine, be extra careful to prevent bumping, make sure the forks pass through the machine bottom, then place the machine on a flat and level floor.

### 4.2 CLEANING MACHINE

The machine is coated with anti-rust oil before shipment. After unpacking the box, remove the oil thoroughly. Do not try to move any part until anti-rust oil has been removed.

Using a clean rag, soak it in kerosene or other degreaser, then use the rag to clean the machine. Do not use gasoline or any volatile solvent for cleaning, because it may stain the machine or damage paint.

### 4.3 CONNECTING POWER SUPPLY

#### **Connect the power source cord 1.25mm Square.**

Before connecting the power supply cord, it is important to make sure that the voltage, frequency (Hz), and phase of the power source match with the machine requirements (two motors). The machine must be connected to the main power supply by a qualified electrician. Use an insulated cable meeting all applicable codes and machine requirements. The power supply cord must be fitted with suitably sized disconnect switch and breaker or fuse, meeting all applicable codes.

### 4.4 DUST PORT CONNECTION

There is a dust port on the back of the machine, and it must be connected to a dust collector before starting the machine. Using flexible hose with a diameter of **5 inch** and a hose clamp to secure hose on the port.

We recommend that the dust collector efficiency minimum as below.

**Confirm with your dust collection supplier for your specific application(s) as this may change dust collection parameters.**

Minimum speed of air flow: 25 m/s.

Minimum corresponding theoretical capacity: 3400L/min.

Connections must be made in such a way to comply with the sound pressure levels in the workplace and so as to avoid dispersal of dust.

## 5. OPERATION INSTRUCTIONS

### 5.1 BEFORE OPERATION

- Confirm the worktable is clear.
- Move the safety fence up and confirm the knobs are secure. The safety fence helps reduce the chance of work pieces or debris flowing over the edge.
- Make sure the position pin is locked and sanding head cannot be rotated.

### 5.2 OPERATION

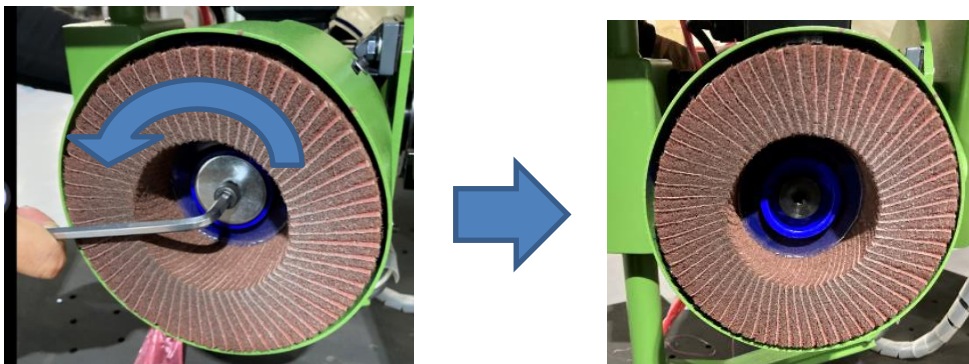
- Turn the main power switch ON and confirm the power light is on.
- Place the work piece in the center of working table.
- Turn ON the vacuum hold-down system and make sure the workpiece remains firmly on the working table.

- Turn ON your dust collection system.
- Set the right abrasive (brush) at the button of sanding head.
- Turn ON the sanding head and adjust it to proper speed (RPM).
- Use two hands to hold the handle and move the sanding head toward work piece.
- When sanding head is started and running, use two hands to hold the handle while sanding the work piece.
- When sanding is completed, turn OFF the sanding head immediately for safety.

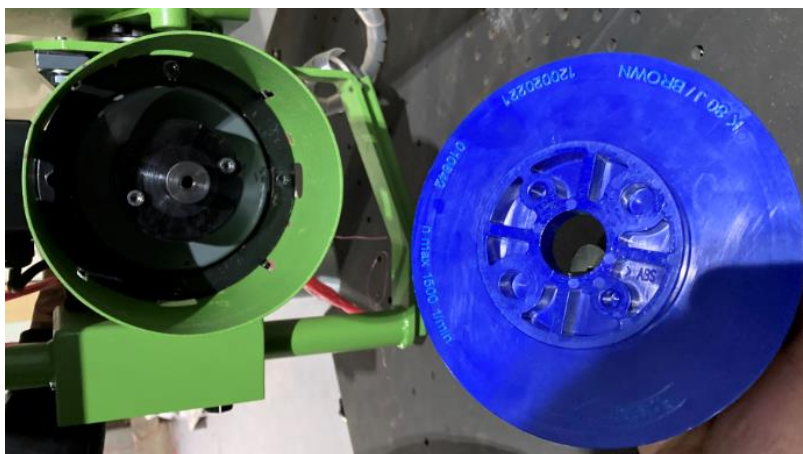
### 5.3 REPLACEMENT OF THE ABRASIVES

#### 5.3-1 Brush type

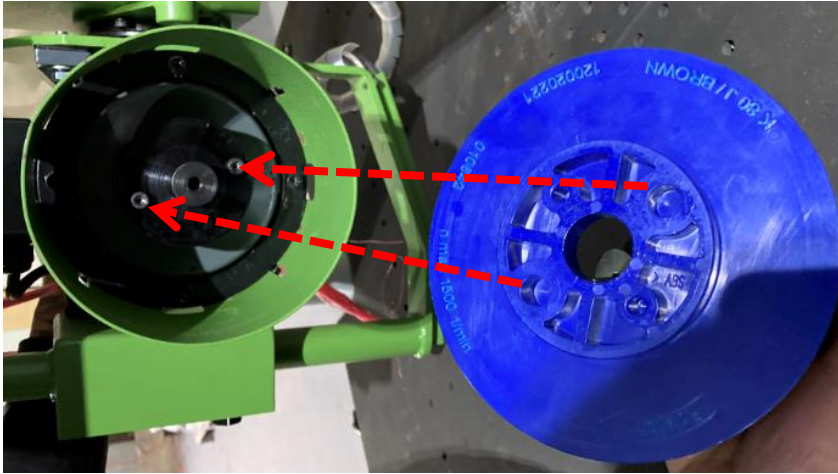
1. Hold brush tightly and use Allen wrench to turn the bolt counterclockwise to remove.



2. Remove the worn brush pieces from disc and replace with new brush pieces.



3. When installing a new brush, confirm the two large “drive holes” align with the two drive studs. See the image below, then hold brush tightly and use Allen wrench to turn the bolt clockwise to tighten the bolt.

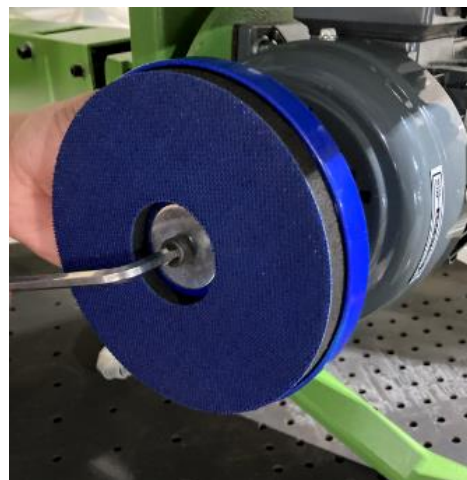


### 5.3-2 Hook & Loop type

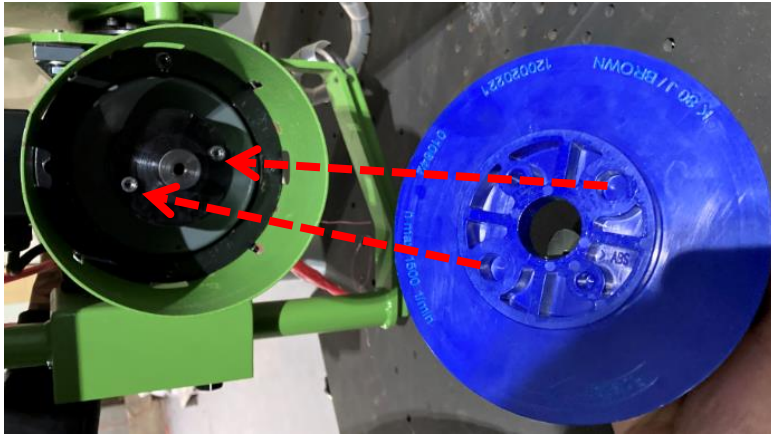
1. Change the worn abrasive: pull the worn abrasive and attach new one in the same position.



2. Change the abrasive holder: hold the abrasive holder tightly and use Allen wrench to turn clockwise to remove the bolt and the abrasive holder. Then, install new abrasive holder and use Allen wrench to turn the bolt counterclockwise to fasten the bolt.

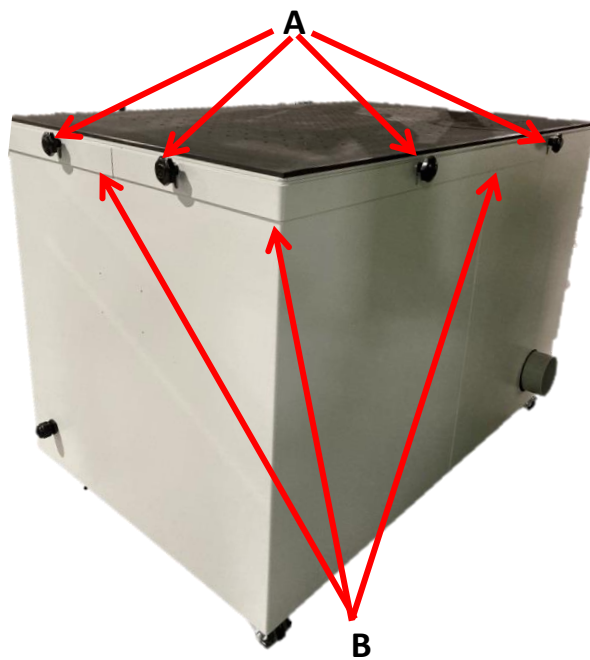


3. When installing a new brush, confirm the two large “drive holes” align with the two drive studs. See the image below, then hold brush tightly and use Allen wrench to tighten the bolt.



#### 5.4 SAFETY FENCE ADJUSTMENT

- Loosen the knobs (“A” below) for Safety Fence.
- Adjust Safety Fence height (“B” below) to desired position. The adjustable range is 0~9mm.
- Fasten the knob to secure the Safety Fence.





## 6. MAINTENANCE

### 6.1 MAINTENANCE PERSONNEL

Maintenance must be carried out only by trained and authorized personnel.  
Contact Laguna Tools for replacement parts and abrasives (800)-234-1976.

### 6.2 WARNINGS FOR MAINTENANCE PERSONNEL

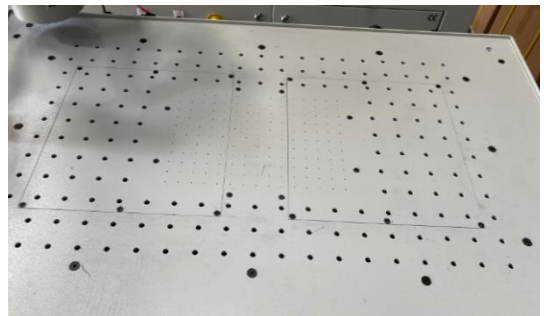
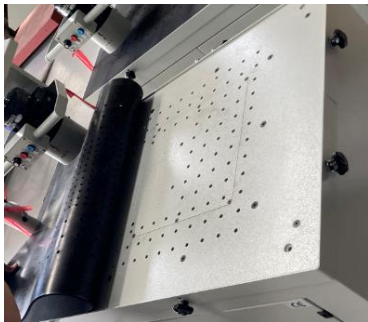
- Start by checking that the power is switched OFF.
- Carry out all work with the machine stopped.
- Dispose of spent lubricants and oil in the proper manner.
- Use the individual protection devices and wear appropriate clothing.

### 6.3 MAINTENANCE ITEMS

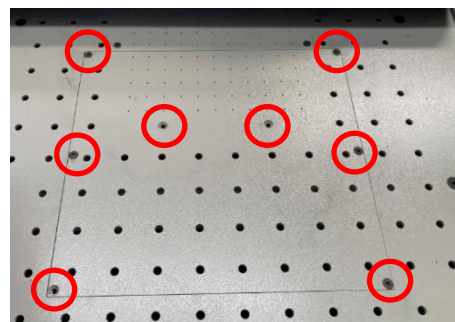
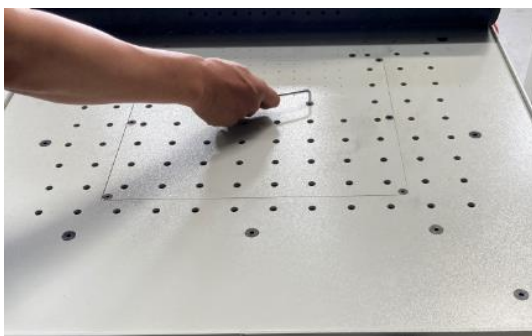
- **Table and machine body, clean daily**
- **Vacuum chamber dust, clean every 3 months**
- **Wear of abrasive materials, check weekly**

How to clean the vacuum chamber dust:

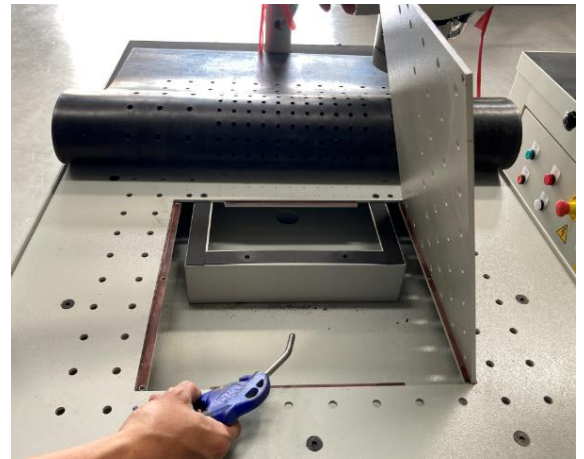
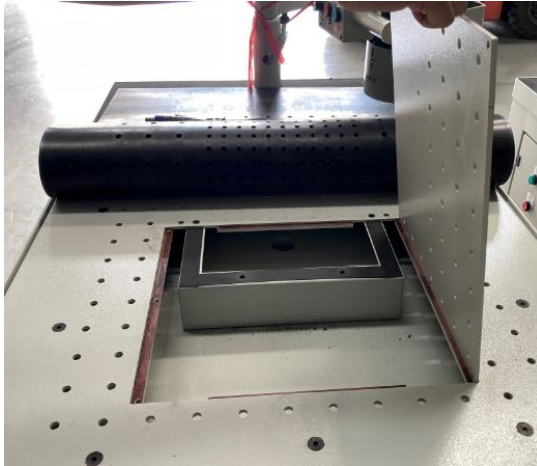
1. Remove the black rubber mat.



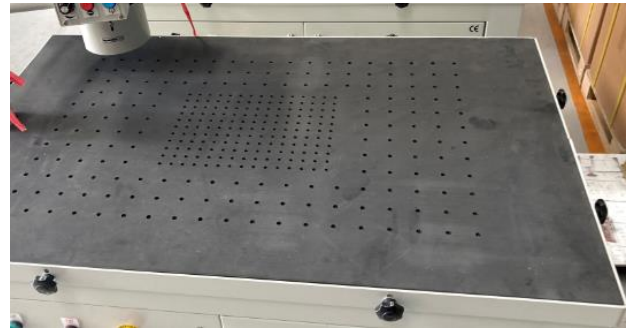
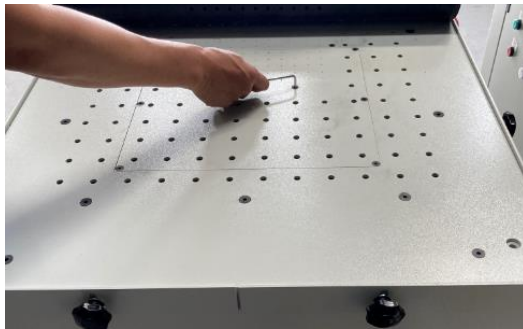
2. Loosen the screws in (red) circles (below, picture) and open the lid, there are 2 lids on both sides of table.



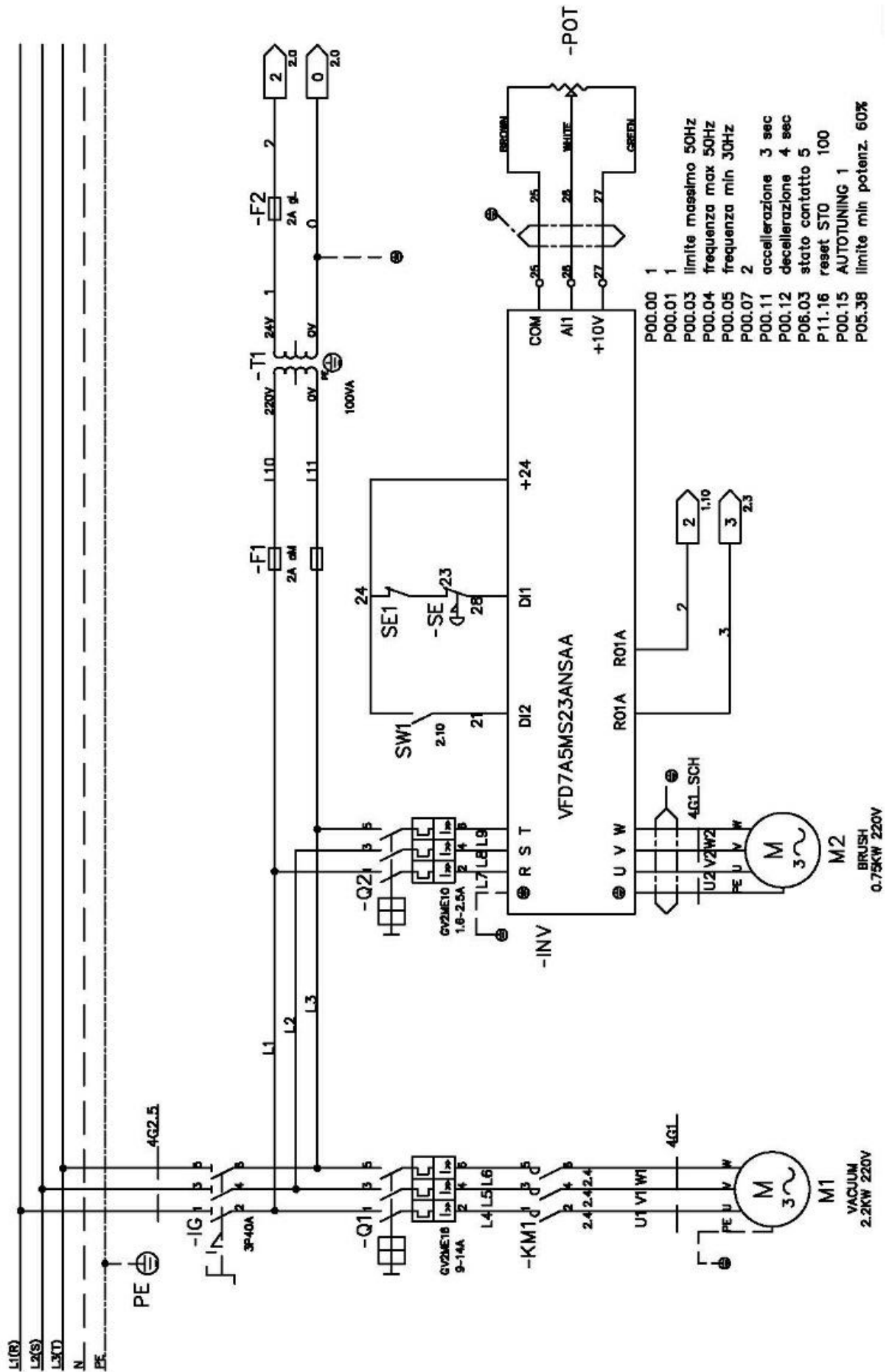
3. Clean the vacuum chamber with vacuum or air blow gun.



4. Replace the lids and fasten with screws, and place the rubber mat on the table after cleaning.



# 7. ELECTRICAL WIRING DIAGRAM





## 8. ELECTRICAL PARTS LIST

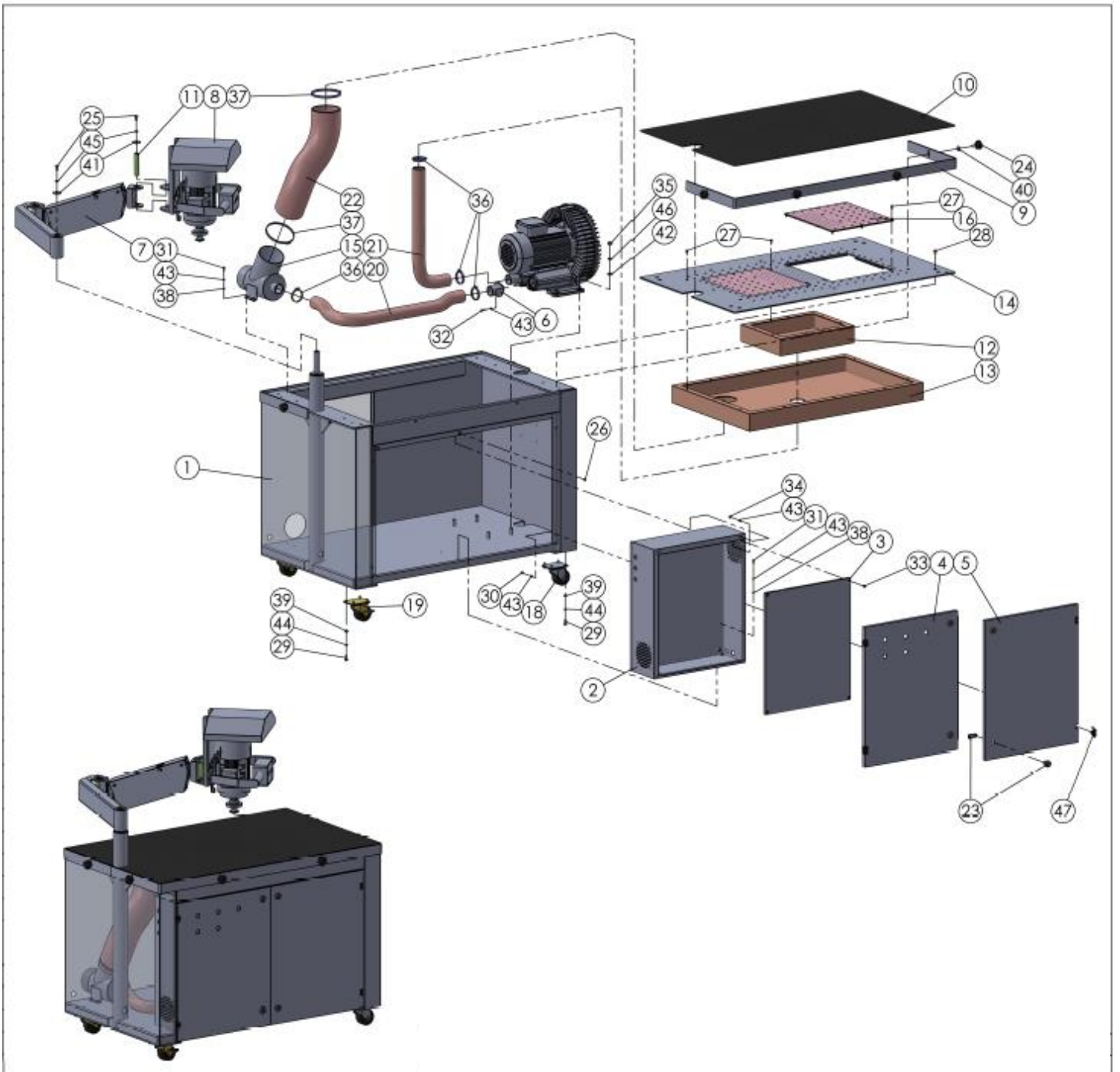
NO.	Part No.	Model No.	Brand	Part name
1	-IG	OT-3P40A	ABB	Main power switch
2	-Q1	GV2ME16 (9-14A)	TE	Protector for air blower
3	-Q2	GV2ME08 (2.5-4A)	TE	Protector for sanding motor
4	-INV	VFD7A5MS23ANSAA	DELTA	Invertor for sanding motor
5	-POT	RV24-B502	TDKYO	Variable resistance
6	-F1	DF102-(2A)	TE	Fuse with fuse holder
7	-F2	DF101-(2A)	TE	Fuse with fuse holder
8	-KM1	LC1D09B7	TE	Air blower controller
9	SW1	ZB5-AA6+AZ101	TE	Button for sanding start (green)
10	SE1	ZB5-AA4+AZ102	TE	Button for sanding stop (Red)
11	-SE	ZB5-AS844+AZ-102	TE	Emergency button
12	-S1	ZB5-AW33+ZB5-AV6	TE	Button for vacuum start (Green)
13	-S2	ZB5-AA4+AZ102	TE	Button for vacuum stop (Red)
14	-Q1	GV-AE11	TE	Overload protector
15	-Q2	GV-AE11	TE	Overload protector
16	-H1	KE-22DS-W-24V	KE	Power lamp
17	-H2	KE-22DS-R-24V	KE	Alarm lamp
18	-T1	220V/24V-4A	PAN-GLOBE	Transformer

## 9. MECHANICAL PARTS LIST

### SGB-6

No.	Part No.	Part name	QTY
1	SL-MT13-01-A001(V1)	Body frame	1
2	SL-MT13-01-E001(V2)	Electrical control box	1
3	SL-MT13-01-E002	Electrical control board	1
4	SL-MT13-01-E003	Front door -LEFT	1
5	SL-MT13-01-E004	Front door -RIGHT	1
6	SL-MT13-01-V001	Connector for air chamber: 2in	2
7	SL-MT13-02-BA01	Cantilever structure	1
8	SL-MT13-02-HA01	Sanding head mount	1
9	G51900R02(V2)	U shape frame	2
10	G51903R01	Rubber mat	1
11	G51905	Shaft for sanding head rotary set	1
12	G51958R02(V4)	Vacuum chamber	1
13	G51966R02(V4)	Air chamber	1
14	GT0575	Table plate	1
15	GT0592-2(V6)	T pipe	1
16	GT0595(V1)	Plate for vacuum chamber	2
17	LG-7068 IE3	Air blower 3HP	1
18	605a-OSK-075P-ZPE4	3 inch Caster without brake	2
19	605d-OSK-075P-ZPE4	3 inch Caster with brake	2
20	AIRTUBE 2in-01	PVC pipe 2 inch	1
21	AIRTUBE 2in-02	PVC pipe 2 inch	1
22	AIRTUBE 5in-01	PVC pipe 5 inch	1
23	C408K	Door lock	8
24	J002-L02	Star grip screw, M8x40L	8
25	MB10020	Round head phillips screw, M10x20L	3
26	MC06012	Hex Socket Flat Head Cap Screw, M06x12L	2
27	MC06016	Hex Socket Flat Head Cap Screw, M06x16L	32
28	MC08016	Hex Socket Flat Head Cap Screw, M08x16L	4
29	MH08020	Hexagon Screw, M08x20L	16
30	MI06010	Socket head cap screw, M6x10L	4
31	MI06012	Socket head cap screw, M6x12L	8
32	MI06020	Socket head cap screw, M6x20L	4
33	MP06010	Round head screw, M6x10L	4
34	NH06	Hexagon nut, M6	2
35	NH12	Hexagon nut, M12	4
36	Tb2.5in	Tube bundle 2.5 inch	4
37	Tb5in	Tube bundle, 115-135mm stainless steel	2
38	W06-1	Flat washer, M6-Ø13T1	8
39	W08-1	Flat washer, M8-Ø18T2	16
40	W08-2	Flat washer, M8-Ø23T2	8
41	W10-3	Flat washer, M10-Ø40T3	3
42	W12-1	Flat washer, M12-Ø26T2.5	4
43	WS06	Spring washer, M6	18
44	WS08	Spring washer, M8	16
45	WS10	Spring washer, M10	3
46	WS12	Spring washer, M12	4
47	Z016	Front door hinge-1.6	4

# SGB-6

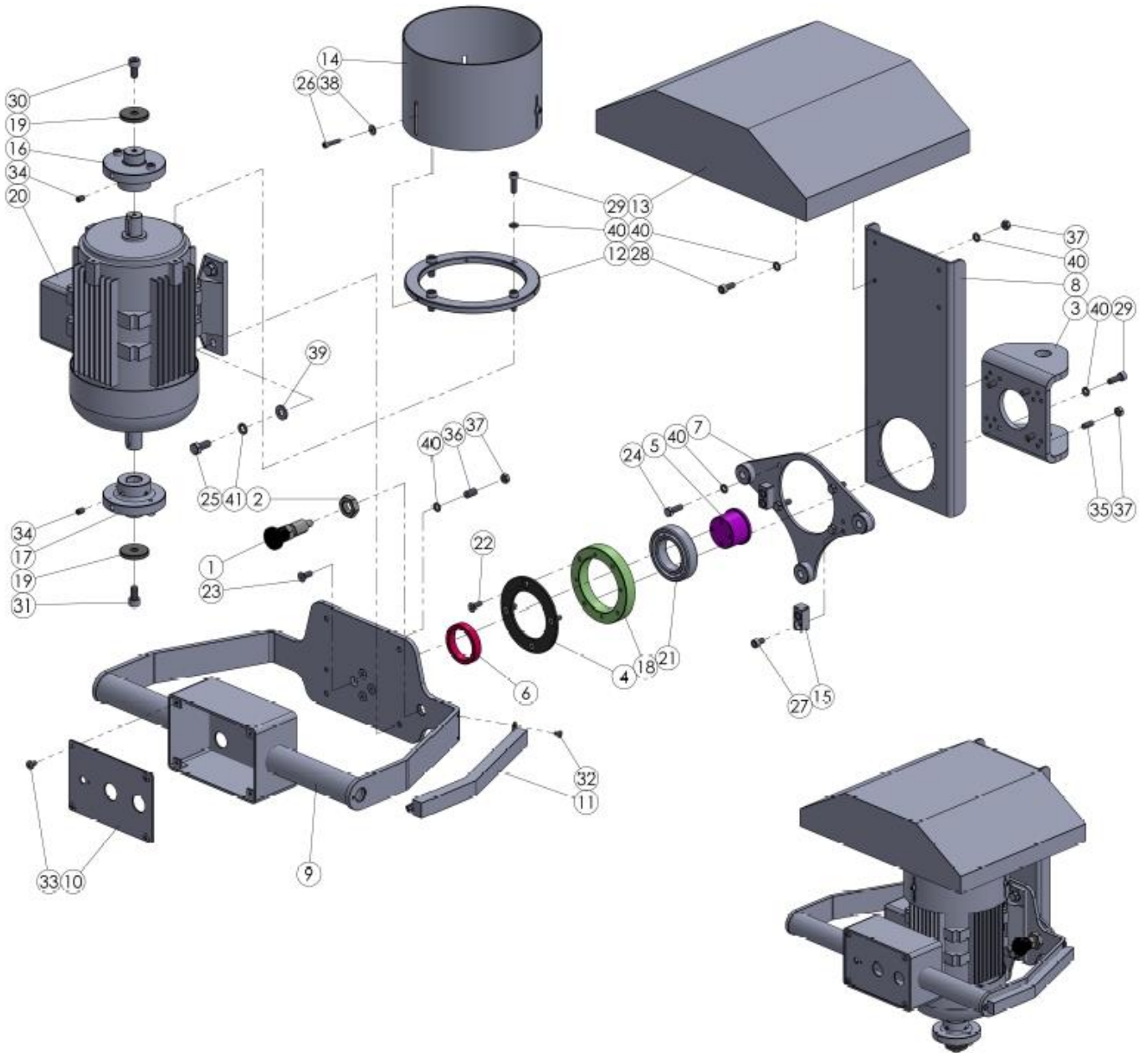


## SGB-6

1	221100133	Position pin - Ø8x12L	1
2	221200118	Nut for position pin- M16x1. 5Px8L	1
3	G51946R01(V2)	Mount for sanding head motor	1
4	G51948	Lid for bearing mount	1
5	G51950(V2)	Rotary shaft for sanding head motor	1
6	G51951(V1)	Bushing for rotary shaft	1
7	G51954	Locating plate for sanding head	1
8	GT0579	Plate for sanding head motor	1
9	GT0580-SL-01	Bracket for sanding head	1
10	GT0580-SL-02(V1)	Lid for control box on sanding head	1
11	GT0580-SL-03	Cover for cable	1
12	GT0583(V3)	Locating ring for abrasive	1
13	GT0584	Safe cover for sanding head	1
14	GT0583(V3)	Locating ring for abrasive	1
15	SL-EZT-A003(V1)	Rotary locator	2
16	SL-MT13-01-H004	Bearing mount for sanding head	1
17	SL-MT13-01-H001	Joint for motor and abrasive (Right screw)	1
18	SL-MT13-01-H002	Joint for motor and abrasive (Left screw)	1
19	PRO-1100-07	Washer, Ø35x Ø8.2x5t	2
20	QW-SB3EE010405HKA01	Sanding motor 4P-1HP-2 Shaft	1
21	BRG6008	Ball bearing, 6008	1
22	MC05016	Hex Socket Flat Head Cap Screw, M5x16L	4
23	MC06016	Hex Socket Flat Head Cap Screw, M6x16L	4
24	MH06020	Hexagon Screw, M6x20L	4
25	MH08020	Hexagon Screw, M8x20L	4
26	MI04020	Socket head cap screw, M04x20L	3
27	MI06010	Socket head cap screw, M06x10L	4
28	MI06016	Socket head cap screw, M06x16L	4
29	MI06020	Socket head cap screw, M06x20L	8
30	MI08016	Socket head cap screw, M08x16L	1
31	MIL08016	Socket head cap screw, M08x16L(Left screw)	1
32	MP04006	Round head screw, M4x6L	3
33	MP05008	Round head screw, M5x8L	4
34	MS06010	Headless hexagon screw, M06x10L	4
35	MS06016	Headless hexagon screw, M06x16L	8
36	MS08016	Headless hexagon screw, M08x16L	1
37	NH06	Hexagon nut, M6	13
38	W04-2	Flat washer, M4-Ø12T1	3
39	W08-1	Flat washer, M8-Ø18T2	4
40	WS06	Spring washer, M6	21
41	WS08	Spring washer, M8	4



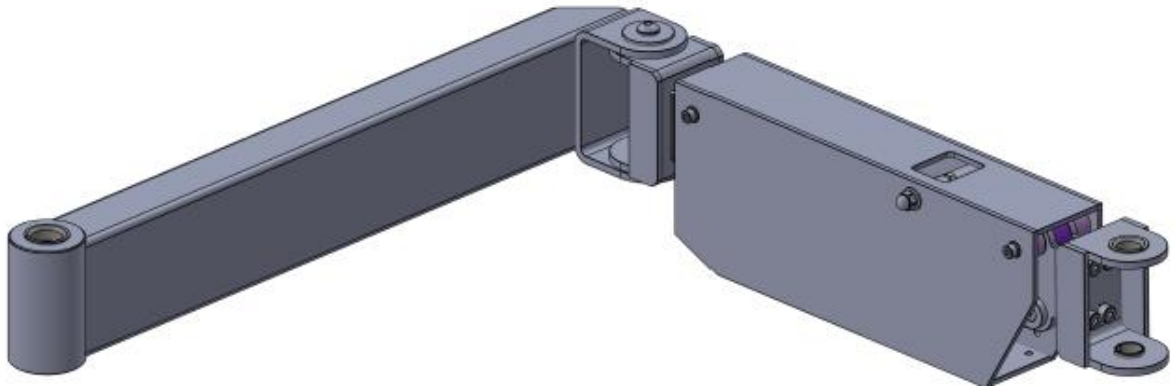
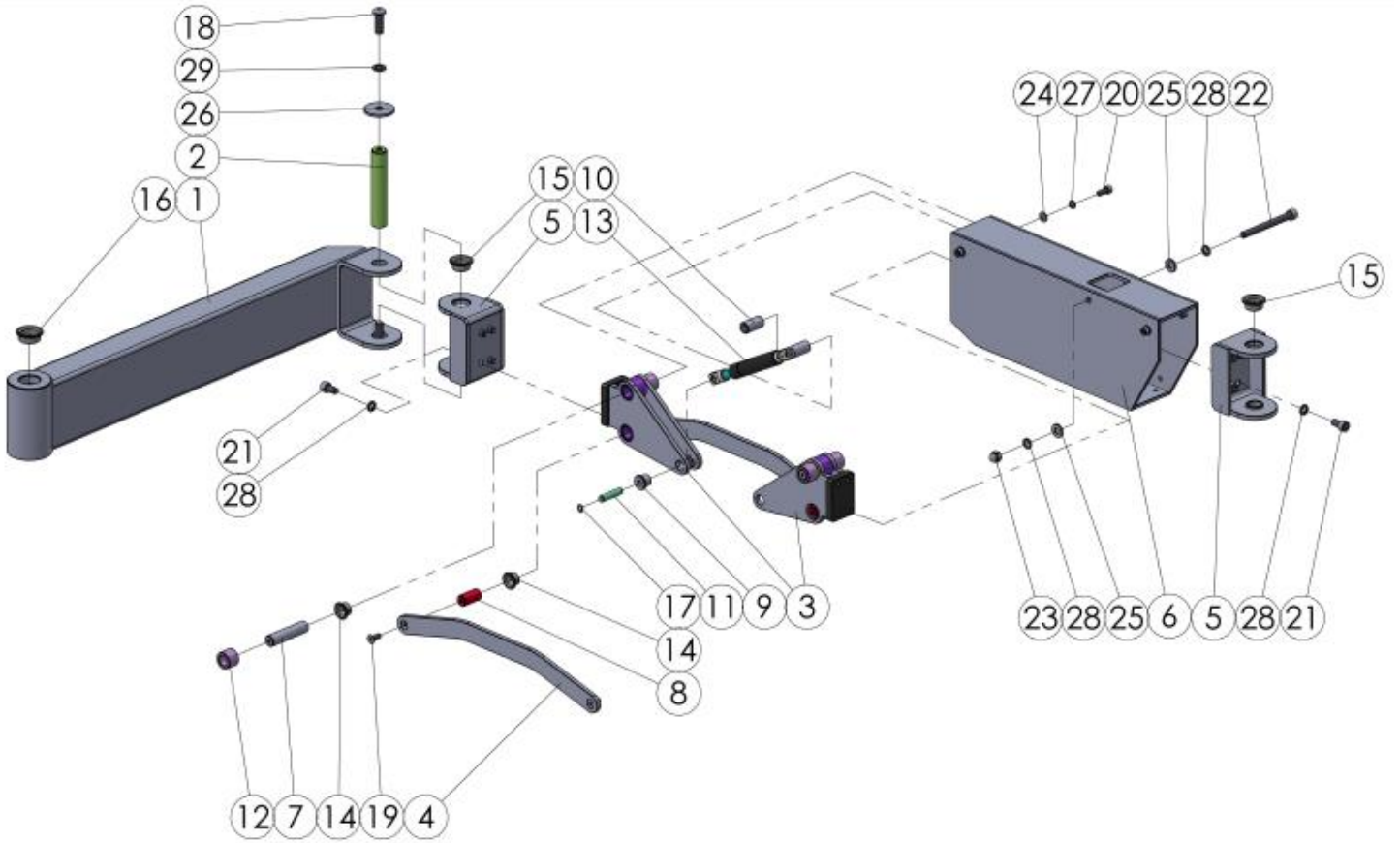
# SGB-6



## SGB-6

No.	Part No.	Part name	QTY
1	G51902(V3)	Frame of rear cantilever	1
2	G51905	Shaft for sanding head rotary set	1
3	G51907R02	Frame of stabilizer for sanding head	2
4	G51911R01(V4)	Swing plate	2
5	G51936-1(V2)	Sanding head rotary set	2
6	GT0589(V2)	Front cantilever rectangular tube	1
7	GT0596	Shaft for stabilizer	2
8	GT0598	Swing shaft	2
9	GT0599	Locating bushing for gas spring	2
10	GT0600-1	Spacer for Gas spring	2
11	GT0601	Shaft for gas spring	1
12	GT0602	Washer for shaft for stabilier	4
13	V.010.50029	Gas spring-750N	2
14	PFF-15-10	Self-lubricating bearings	8
15	PFF-20-10	Self-lubricating bearings	4
16	PFF-25-10	Self-lubricating bearings	2
17	CS008	Retaining ring for shaft, S8	2
18	MB10030	Round head phillips screw, M10x30L	2
19	MC06016	Hex socket flat head cap screw, M06x16L	4
20	MI06016	Socket head cap screw, M6x16L	4
21	MI08016	Socket head cap screw, M8x16L	8
22	MI08090	Socket head cap screw, M8x90L	1
23	NA08	Domed nut, M8	1
24	W06-1	Flat washer, M6-Ø13T1	4
25	W08-1	Flat washer, M8-Ø18T2	2
26	W10-3	Flat washer, M10Ø40T3	2
27	WS06	Spring washer, M6	4
28	WS08	Spring washer, M8	10
29	WS10	Spring washer, M10	2

# SGB-6



**KEEP THIS MANUAL FOR FUTURE REFERENCE**

**LAGUNA TOOLS**

744 Refuge Way Suite 200

Grand Prairie TX 75050

800.234.1976

[www.lagunatools.com](http://www.lagunatools.com)