

PIFLUX:1

Owner's Manual



SKU: MDCPF15110

1.5HP CYCLONE
1 MICRON CANISTER | HEPA CANISTER



PIFLUX:1



Thank you for investing in a Laguna Tools PFLUX1 cyclone dust collector. This cyclone is one of a family of unique machines proudly offered by Laguna Tools. Every Laguna machine is engineered for years of dependable service. Please feel free to contact Laguna Tools if you have a question or suggestion. We appreciate working with you and your choice of a Laguna Tools machine for your shop.

Regards,
Torben Helshoj
President & Founder Laguna Tools

This manual applies to the PFLUX 1 cyclone dust collector. Enter the model number and serial number below for quick reference when ordering accessories, supplies or parts. NOTE: The model and serial number plate can be found on the Top Upright Support, on the right side near filter and On/Off switch.

Model: _____ Date of purchase: _____

Serial: _____ Place of purchase: _____

LATEST MANUAL:

Below is a QR code which will direct you to the manual reference page, where the latest version of the manual is located on the Laguna Tools website. The online manual may have updates and information added after the printed copy was released. Scan the code with your smartphone or copy the URL link to be directed to the latest manual page to reference your specific machine and model.

<https://lagunatools.com/resources/product-manuals/#classic>



Laguna Tools 744 Refuge Way, Suite 200
Grand Prairie TX 75050

800-234-1976

www.lagunatools.com



CONTENTS

| | |
|---------------------------------------|----|
| Safety: | 03 |
| Important Safety Instructions | 04 |
| General Safety Rules | 07 |
| Wiring Diagrams: | 10 |
| Power Connections | 10 |
| Programming Remote Control | 15 |
| Unpacking: | 16 |
| Assembly: | 17 |
| Power Supply | 28 |
| 110V to 220V Conversion, single phase | 29 |
| Operation: | 37 |
| Maintenance: | 37 |
| Circuit Board Replacement | 39 |
| Trouble Shooting: | 42 |
| Parts Breakdown / Exploded Views: | 44 |
| Parts List | 49 |
| Hardware Parts List | 53 |
| Specifications: | 55 |
| Supplies: | 55 |
| Warranty: | 56 |



SAFETY

READ AND UNDERSTAND THIS MANUAL AND ALL INSTRUCTIONS BEFORE USING THIS EQUIPMENT. Failure to follow all instructions may result in electric shock, fire and/or serious personal injury or property damage! Electronic copies of this manual are available at www.lagunatools.com.

SAFETY GUIDELINES - DEFINITIONS

This manual contains information that is important for you to know and understand. This information relates to protecting YOUR SAFETY and PREVENTING EQUIPMENT PROBLEMS. To help you recognize this information, we use the symbols below. Please read the manual and pay attention to these sections.



Indicates an imminently hazardous situation which, if not avoided, **will** result in death or serious injury.



Indicates a potentially hazardous situation which, if not avoided, **could** result in death or serious injury.



Indicates a potentially hazardous situation which, if not avoided, **may** result in minor or moderate injury.



(Used without the safety alert symbol) indicates a potentially hazardous situation which, if not avoided, **may** result in property damage.



Woodworking (and similar materials) can be dangerous if safe and proper operating procedures are not followed. As with all machinery, there are certain hazards involved with the operation of the machine. Using the machine with respect and caution will considerably lessen the possibility of personal injury. However, if normal safety precautions are overlooked or ignored, personal injury to the operator may result. Safety equipment such as guards, push sticks, hold-downs, featherboards, goggles, dust masks and hearing protection can reduce the potential for injury. Even the best guard will not make up for poor judgement, carelessness or inattention. **Always use common sense** and exercise caution in the workshop. If a procedure feels dangerous, do not try it. Figure out an alternative procedure that is safer. **REMEMBER:** Your personal safety is your responsibility.

IMPORTANT SAFETY INSTRUCTIONS

WARNING

This machine was designed for certain applications only. We strongly recommend that this machine not be modified and/or used for any application other than that for which it was designed. If you have any questions relative to a particular application, DO NOT use the machine until you have first contacted the manufacturer to determine if it can or should be performed on the product.

If you have any questions relative to its application DO NOT use the product until you have contacted the manufacturer and we have advised you.

When using an electrical appliance/machine, basic precautions should always be followed, including the following:

READ ALL INSTRUCTIONS BEFORE USING (THIS APPLIANCE/MACHINE)

WARNING

To reduce the risk of fire, electric shock, or injury:

1. Do not leave appliance when plugged in. Unplug from outlet when not in use and before servicing.
2. Do not use outdoors or on wet surfaces
3. Do not allow to be used as a toy. Close attention is necessary when used by or near children.
4. Use only as described in this manual. Use only manufacturer's recommended attachments.
5. Do not use with damaged cord or plug. If appliance is not working as it should, has been dropped, damaged, left outdoors, or dropped into water, return it to a service center.



6. Do not pull or carry by cord, use cord as a handle, close a door on cord, or pull cord around sharp edges or corners. Do not run appliance over cord. Keep cord away from heated surfaces.
7. Do not unplug by pulling on cord. To unplug, grasp the plug, not the cord.
8. Do not handle plug or appliance with wet hands.
9. Do not put any object into openings. Do not use with any opening blocked; keep free of dust, lint, hair, and anything that may reduce air flow.
10. Keep hair, loose clothing, fingers, and all parts of body away from openings and moving parts.
11. Turn off all controls before unplugging.
12. Use extra care when cleaning on stairs.
13. Do not use to pick up flammable or combustible liquids, such as gasoline, or use in areas where they may be present.
14. Connect to a properly grounded outlet only. See Grounding Instructions.

SAVE THESE INSTRUCTIONS

1. Read and understand the warnings posted on the machine and in this manual. Failure to comply with all warnings may cause serious injury.
2. Replace the warning labels if they become obscured or removed.
3. This 1.5HP Portable Cyclone Dust Collector is designed and intended for use by properly trained and experienced personnel only. If you are not familiar with the proper and safe operation of this type of dust collector, do not use until proper training and knowledge have been obtained.
4. Do not use this machine for other than its intended use. If used for other purposes, **LAGUNA TOOLS INC.**, disclaims any real or implied warranty and holds itself harmless from any injury that may result from that use.
5. Always wear approved safety glasses/face shields while using this machine.
6. Before operating this dust collector, remove tie, rings, watches, and other jewelry, and roll sleeves up past the elbows. Remove all loose clothing and confine long hair. Non-slip footwear or anti-skid floor strips are recommended. Do **not** wear gloves.
7. Wear ear protectors (plugs or muffs) during extended periods of operation.
8. Some dust created by power sanding, sawing, grinding, drilling and other construction activities contain chemicals known to cause cancer, birth defects or other reproductive harm. Some examples of these chemicals are: (next page)
 - Lead from lead-based paint.
 - Crystalline silica from bricks, cement, and other masonry products.
 - Arsenic and chromium from chemically treated lumber.



Your risk of exposure varies, depending on how often you do this type of work. To reduce your exposure to these chemicals, work in a well-ventilated area and work with approved safety equipment, such as face or dust masks that are specifically designed to filter out microscopic particles.

9. Do not operate this machine while tired or under the influence of drugs, alcohol or any medication.
10. Make certain the switch is in the **OFF** position before connecting the machine to the power source.
11. Make certain the machine is properly grounded.
12. Make all machine adjustments or maintenance with the machine unplugged from the power source.
13. Form a habit of checking to see that all extra equipment such as adjusting keys, wrenches, scrap, stock, and cleaning rags are removed away from the machine before turning on.
14. Always keep safety guards in place when the machine is in use. If removed for maintenance purposes, use extreme caution, and replace the guards immediately when maintenance is complete.
15. Make sure the dust collector is on a flat even surface and the wheels locked in place before use.
16. Check damaged parts. Before further use of the machine, a guard or other part that is damaged should be carefully checked to determine that it will operate properly and perform its intended function. Check for alignment of moving parts, binding of moving parts, breakage of parts, mounting and any other conditions that may affect its operation. A guard or other part that is damaged should be properly repaired or replaced.
17. Provide for adequate space surrounding work area and non-glare, overhead lighting.
18. Keep the floor around the machine clean and free of scrap material, oil, and grease.
19. Keep visitors a safe distance from the work area. **Keep children away.**
20. Make your workshop child proof with padlocks, master switches or by removing starter keys.

LAGUNA

21. Give your work undivided attention. Looking around, carrying on a conversation and “horse-play” are careless acts that can result in serious injury.
22. Always maintain a balanced stance so that you do not fall or lean against the dust collector. Do not overreach or use excessive force to perform any machine operation.
23. Use the right tool at the correct speed and feed rate. Do not force a tool or attachment to do a job for which it was not designed. The right tool will do the job better and safer.
24. Use recommended accessories; improper accessories may be hazardous.
25. Maintain machinery with care. Follow instructions for lubricating and changing accessories.
26. Turn off the machine before cleaning. Use a brush or compressed air to remove dust or debris — do not use your hands.
27. Do not stand on the machine. Serious injury could occur if the machine tips over.
28. Never leave the machine running unattended. Turn the power off and do not leave the machine until it comes to a complete stop.
29. Never operate or run the machine without closing the drum up against the lid. Failure to do so will result in the machine amperage increasing and may trip your circuit.

Familiarize yourself with the following safety notices used in this manual:

SAFETY GUIDELINES - DEFINITIONS

This manual contains information that is important for you to know and understand. This information relates to protecting YOUR SAFETY and PREVENTING EQUIPMENT PROBLEMS. To help you recognize this information, we use the symbols, described earlier. Please read the manual and pay attention to these sections.

GENERAL SAFETY RULES



FAILURE TO FOLLOW THESE RULES MAY RESULT IN SERIOUS INJURY.

LAGUNA

FOR YOUR OWN SAFETY, READ AND UNDERSTAND THE INSTRUCTION MANUAL BEFORE OPERATING THE MACHINE. Learn the unit's application and limitations as well as the specific hazards peculiar to it.

KEEP WORK AREA CLEAN. Cluttered areas and benches invite accidents.

DON'T USE IN DANGEROUS ENVIRONMENT. Don't use this unit in damp or wet locations or expose it to rain. Keep work area well-lighted.

KEEP CHILDREN AND VISITORS AWAY. All children and visitors should be kept a safe distance from work area.

DISCONNECT UNIT before servicing.

CHECK DAMAGED PARTS. Before further use of the unit, properly repair or replace any part that is damaged.



FAILURE TO FOLLOW THESE RULES MAY RESULT IN SERIOUS INJURY.

ADDITIONAL SAFETY FOR DUST COLLECTORS

Intended use. This dust collector is only intended for collecting wood dust and chips from woodworking machines. Do not use this dust collector to collect metal, dirt, pebbles, drywall, asbestos, lead paint, silica, liquids, aerosols, or any flammable, combustible, or hazardous materials.

Hazardous dust. Dust created while using machinery may cause cancer, birth defects, or long-term respiratory damage. Be aware of dust hazards associated with each work piece material, and always wear a NIOSH-approved respirator to reduce your risk.

Dust allergies. Dust from certain woods may cause an allergic reaction in people and animals.

Make sure you know what type of wood dust you will be exposed to in case there is a possibility of an allergic reaction.

Wear respirator. Fine dust that is too small to be caught in the filter will be blown into the ambient air during operation. Always wear a NIOSH-approved respirator during operation and for a short time after to reduce your risk of permanent respiratory damage.

Emptying dust. When emptying dust from the collection container, wear a respirator and safety glasses. Empty dust away from ignition sources and into an approved container.



Disconnecting power supply. Turn the switch off, disconnect the dust collector from the power supply, and allow the impeller to come to a complete stop before leaving the machine unattended or doing any service, cleaning, maintenance, or adjustments.

Suspended dust particles and ignition sources. Do not operate the dust collector in areas where explosion risks are high. Areas of high risk include, but are not limited to, areas near pilot lights, open flames, or other ignition sources.

Fire suppression. Only operate the dust collector in locations that contain a fire suppression system or have a fire extinguisher nearby.

Impeller hazards. Do not place your hands or tools near the open inlet during operation for any reason. The powerful suction could easily cause accidental contact with the impeller, which will cause serious personal injury or damage to the machine. Always keep small animals and children away from open dust collection inlets.

Avoiding sparks. Do not allow steel or rocks to strike the impeller—this may produce sparks. Sparks can smolder in wood dust for a long time before a fire is detected. If you accidentally cut into wood containing tramp metal (nails, staples, spikes, etc.), immediately turn **off** the dust collector, disconnect it from power, and wait for the impeller to stop—then empty the collection container into an approved airtight metal container.

Operating location. To reduce respiratory exposure to fine dust, locate permanently installed dust collectors away from the working area, or in another room that is equipped with a smoke detector. Do not operate the dust collector in rainy or wet locations—exposure to water may create a shock hazard or decrease the life of the machine.

Static electricity. Plastic dust lines generate high amounts of static electricity as dust chips pass through them. Although rare, sparks caused by static electricity can cause explosions or fire. To reduce this risk, make sure all dust lines are thoroughly grounded by using a grounding wire.

Regular cleaning. Regularly check/empty the collection bags or drum to avoid the buildup of fine dust that can increase the risk of fire. Make sure to regularly clean the surrounding area where the machine is operated—excessive dust buildup on overhead lights, heaters, electrical panels, or other heat sources will increase the risk of fire.

**SAVE THESE INSTRUCTIONS.
Refer to them often and use them to instruct others.**

LAGUNA

WIRING DIAGRAMS

POWER CONNECTIONS 110 Volt

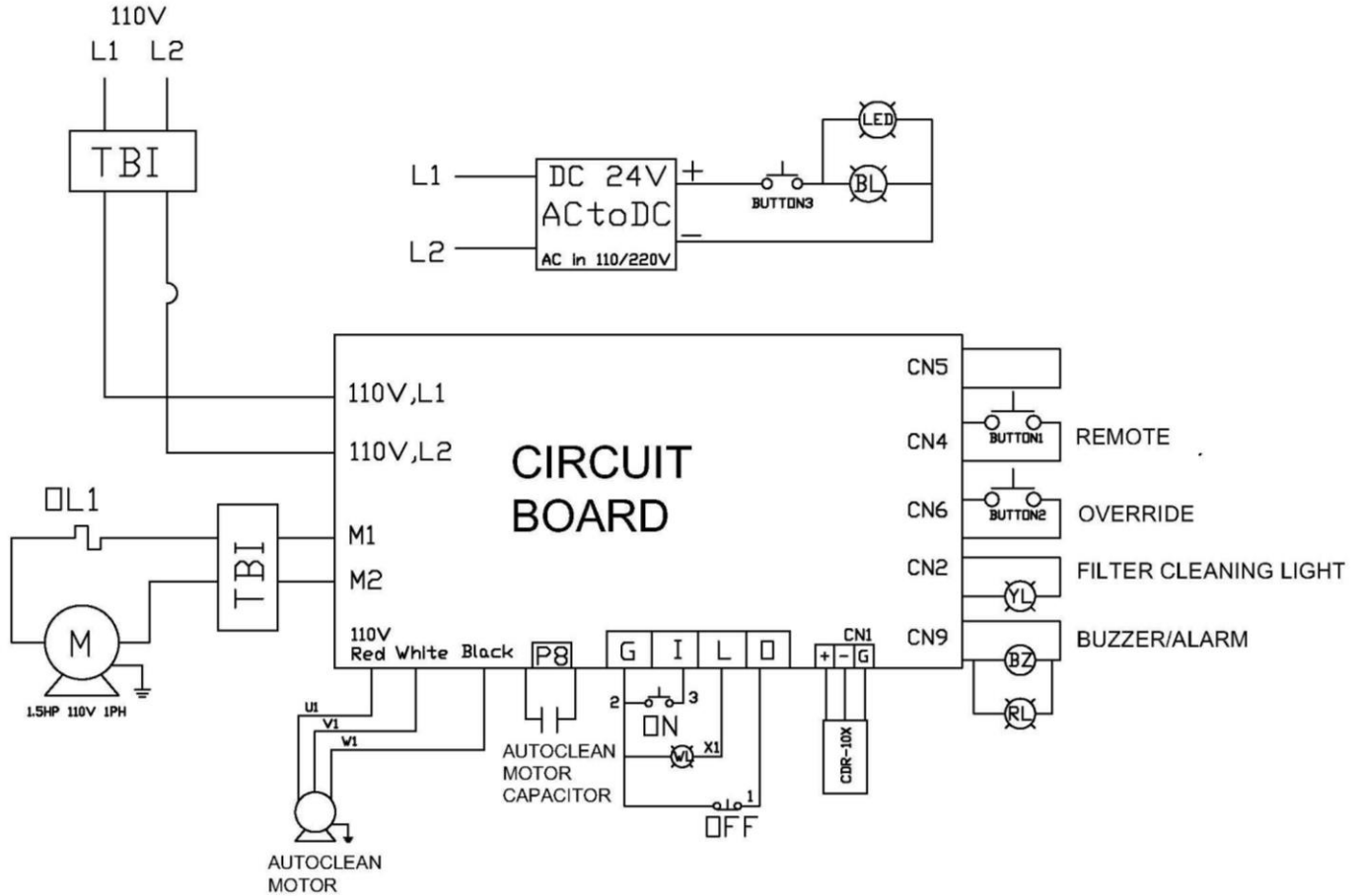


Figure 1: 110 Volt Power Connections & Wiring

LAGUNA

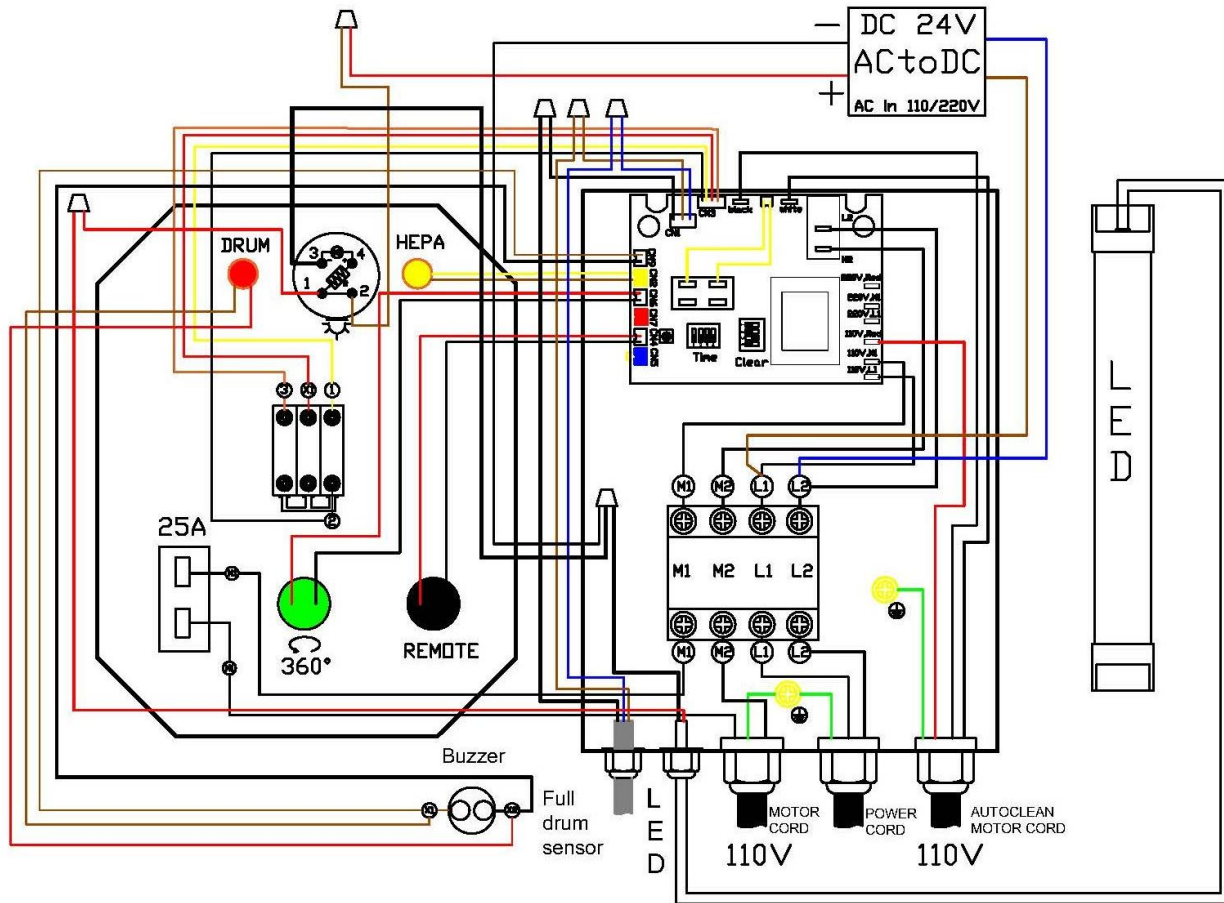


Figure 2: 110 Volt Internal Wiring

LAGUNA



DO NOT EXPOSE THE MACHINE TO RAIN OR OPERATE THE MACHINE IN DAMP LOCATIONS.

MOTOR SPECIFICATIONS

Your machine is wired for 110 volts, 60 HZ alternating current. Before connecting the machine to the power source, make sure the switch is in the "OFF" position. An (appx.) 8' cord is included, a "plug" is NOT included. A plug must be installed by a qualified technician.

GROUNDING INSTRUCTIONS



THIS MACHINE MUST BE GROUNDED WHILE IN USE TO PROTECT THE OPERATOR FROM ELECTRIC SHOCK.

1. This appliance must be connected to a grounded metal, permanent wiring system; or an equipment-grounding conductor must be run with the circuit conductors and connected to the equipment-grounding terminal or lead on the appliance.

The installer, such as a qualified electrician, cut (or bend over) and insulate the grounding conductor from a field wiring supply cable.

In the event of certain types of malfunctions or breakdowns, grounding provides a path of least resistance for electric current—to reduce the risk of electric shock.

Improper connection of the equipment-grounding wire can result in a risk of electric shock. The wire with green insulation (with or without yellow stripes) is the equipment-grounding wire. If repair or replacement of the power cord or plug is necessary, do not connect the equipment-grounding wire to a live (current carrying) terminal.

Check with qualified electrician or service personnel if you do not understand these grounding requirements, or if you are in doubt about whether the tool is properly grounded. If you ever notice that a cord or plug is damaged or worn, disconnect it from power, and immediately replace it with a new one.

Full Load amperage Draw

| | |
|----------------------------------|-----------|
| Amp draw at 110V (prewired)..... | 18.8 Amps |
| Amp draw at 220V | 9.4 Amps |



Power Supply Circuit Requirements

The power source circuit for your machine must be grounded and rated for the amperage given below. Never replace a circuit breaker on an existing circuit with one of higher amperage without consulting a qualified electrician to ensure compliance with wiring codes. **If you are unsure about the wiring codes in your area or plan to connect your machine to a shared circuit, consult a qualified electrician.**

- Circuit Size (110V)25 Amp min.**
- Circuit Size (220V)15 Amp min.**



IN ALL CASES, MAKE CERTAIN THE RECEPTACLE IN QUESTION IS PROPERLY GROUNDED. IF YOU ARE NOT SURE, HAVE A QUALIFIED ELECTRICIAN CHECK THE RECEPTACLE.

110 VOLT Single-Phase Operation

The motor supplied with your machine is a dual voltage, 110/220 Volt motor. It is shipped ready-to-run for 110 Volt operation. However, it can be converted for 220 Volt operation. An (appx.) 8' cord is included, a "plug" is NOT included. A plug must be installed by a qualified technician.

The machine can be converted from 110 Volt to 220 Volt operation by re-wiring for 220 volts and **replacing** these components within kit# **PF1CONV220V** rated for 220 volt operation. Note, the kit does not include a 220V plug.

- **PDCPF-ACM220V** → Autoclean motor 220V
- **PDCPF-ACM220V-C** → Autoclean capacitor 1.5uF/450VAC
- **PDCPF15110-220-OV** → Overload protector 15A
- Plug 220 Volt (source from local electrician, not available from Laguna Tools)

A qualified electrician should do the conversion, or the machine can be taken to an Authorized Dealer Service Center. When completed, the machine must conform to the National Electric Code and all local codes and ordinances. See "110V to 220V Converting" for more details.



NOTICE

This Machine is prewired for 110V. If you plan to operate the machine at 220V, you must replace several components and rewire the motor!

LAGUNA

FUNCTIONS

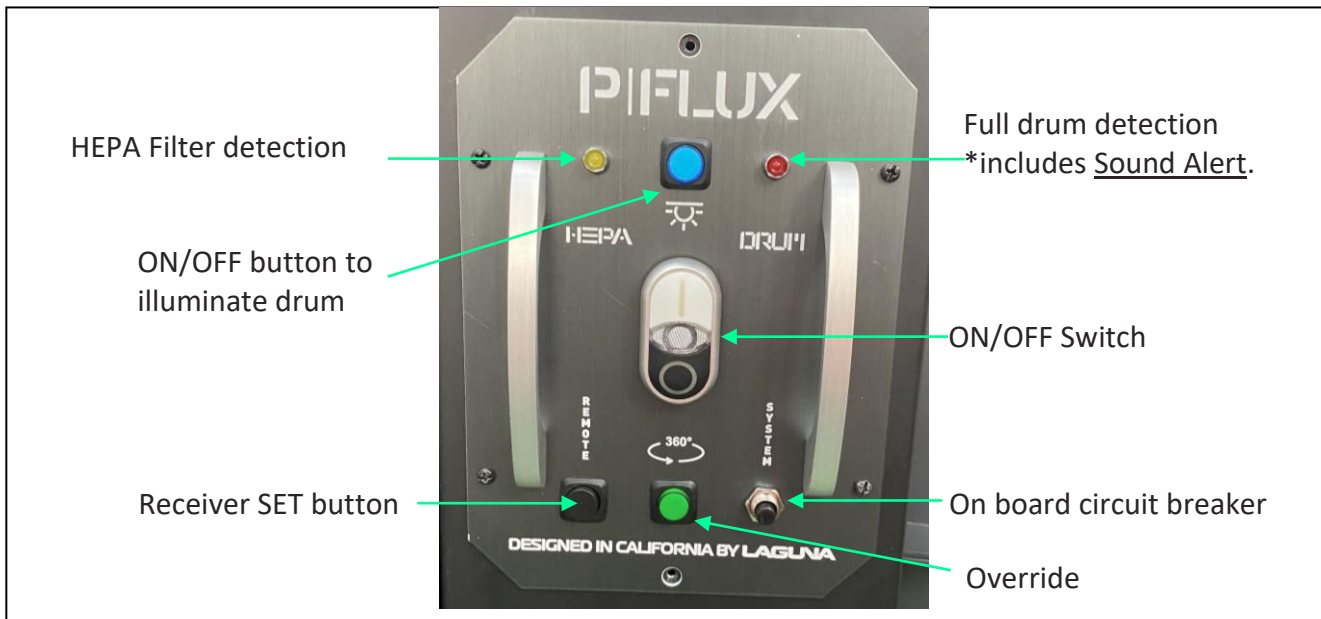


Figure 3: High Frequency Remote Control Receiver and Manual Switch

HEPA Filter detection – will illuminate when filter cleans (automatic cleaning/override)

Full drum detection – when drum is full, buzzer* will constantly sound off and light will illuminate.

*When the drum is close to 70%-80% full; intermittent buzzing will occur; this is a normal state.

ON/OFF Switch – turns cyclone **ON** or **OFF**.

On board circuit breaker – Pops out if machine overloads. Press to reset.

Override – Press for (3) seconds to activate override cleaning while the cyclone is ON. You can also activate this function by pressing the CLEAN button on the handheld remote control for (3) seconds.

Receiver SET button – Used to program receiver.

ON/OFF Illuminate drum – controls the LED light on the drum lid to illuminate inside the drum for visuals of the dust level.

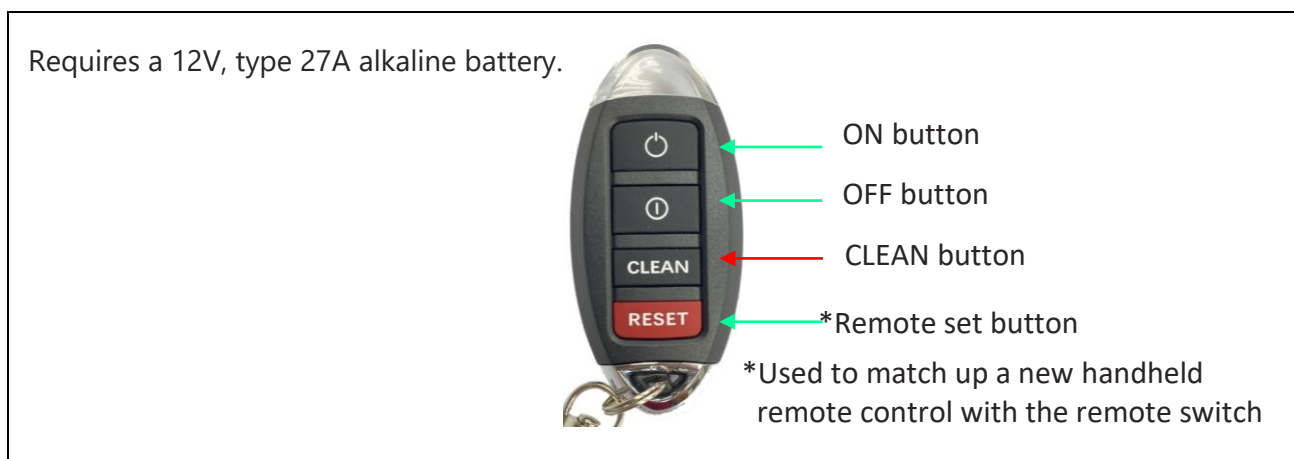


Figure 4: Remote Control

PROGRAMMING REMOTE CONTROL

1. Confirm the machine is switched ON before programming the remote control.
2. Press the Receiver Set Button on the bottom of the remote switch until you hear two beeps.
3. Press the Remote Set Button on the handheld remote control simultaneously with the black button until you hear **three beeps** to complete the set up.



Figure 5: Receiver Set Button

MULTIPLE HANDHELD REMOTE CONTROLS SETUP

You can pair up to five (max.) handheld remote controls. Each handheld remote needs to be setup individually following the programming steps above.

If you setup a sixth handheld remote, it will override the first handheld remote. If a seventh handheld remote is setup, it will override the second handheld remote, etc.

LAGUNA

UNPACKING

The 1.5HP Mobile Dust Cyclone comes packed in a single box. Before attempting to assemble this machine, follow these directions for unpacking:

1. Carefully cut the banding straps and remove them from the box.
2. Cut along the tape line at the top of the box.
3. Remove all parts from the top of the foam and set aside.
4. Remove the foam packing material from the top of the machine and **set aside for further use, during assembly.**
5. Cut the cardboard box (top to bottom) in the four corners for easy removal of the box.
6. Carefully take out the machine components from the box and set aside.
7. Using the diagram below, ensure that all parts are present and in good condition.

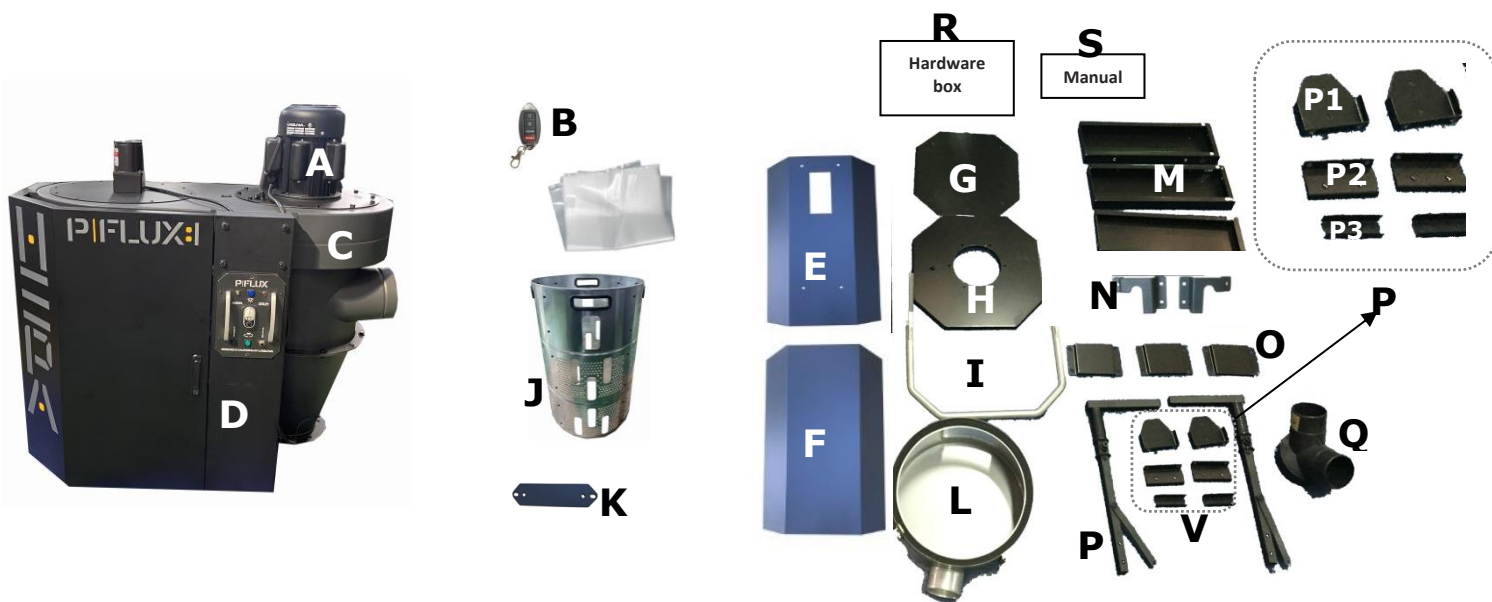


Figure 6: Components/Inventory

DESCRIPTION (QUANTITY)

- | | |
|-----------------------------|--|
| A. Motor | M. Lower upright supports (3) |
| B. Remote control | N. Foot pedal bar (left and right) |
| C. Dust chute | O. Upright support reinforcement plate (3) |
| D. Top upright supports (3) | P. Foot pedal assembly fittings |
| E. Octagon drum front panel | P1. Lower triangular support plate (2) |
| F. Octagon drum back panel | P2. Foot pedal bar support (2) |
| G. Octagon drum base panel | P3. Lower support plate (2) |
| H. Octagon drum lid | Q. Inlet adapter |
| I. Octagon drum foot pedal | R. Hardware box (Casters, hardware) |
| J. Drum insert | S. Operating and Parts Manual |
| K. Crossbar | |
| L. End cap | |

LAGUNA

Report any missing or damaged parts to your dealer or distributor. Prior to machine assembly and use, read this manual thoroughly to familiarize yourself with proper assembly, maintenance, and safety procedures.

ASSEMBLY



This step requires two adults. The 1.5 HP Mobile Dust Cyclone is heavy, be careful when lifting and handling it! Failure to comply may cause serious injury and/or damage to the machine and/or property!

Tools/items Required:

10mm wrench / 12mm wrench / 14mm wrench
Phillips screwdriver
4mm hex wrench / 5mm hex wrench
Plug for cord, 3 wire
Silicone (1 tube, clear)
Caulk gun (for silicone)


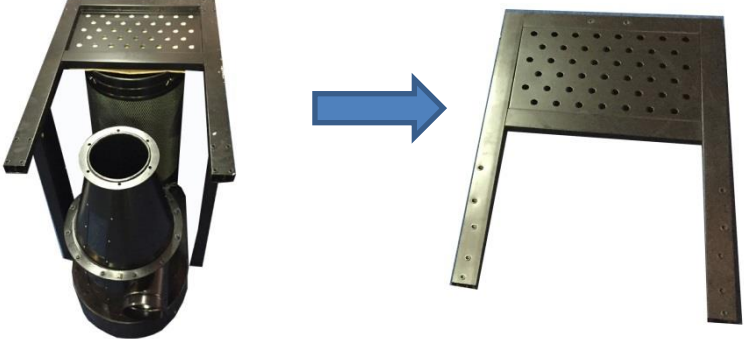

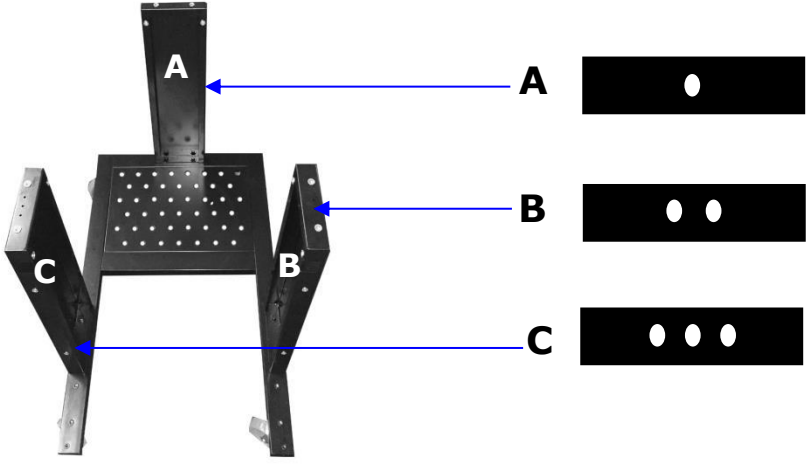
To assemble your dust cyclone, follow these steps:

For your own safety, do not connect the machine to the power source until the machine is completely assembled. Please also make sure that you read and understand the entire instruction manual.

ASSEMBLY TIME ESTIMATE; 4 to 5 hours

Visit the Laguna Tools Video page for setup assistance.

LAGUNA

| | |
|---|---|
|  | <p>1. Place the empty, top, foam packing insert (which contained the individual parts) upside-down on the floor. Place the main unit into the foam insert upside-down. Make sure the unit is centered properly and resting solidly in the foam insert for the next steps.</p> |
|  | <p>2. Remove the base which has been bolted to the (3) top upright supports.</p> |
| <p>Swivel caster</p>  <p>Swivel caster With brakes</p> | <p>3. Turn base upside-down. Use (16) 5/16" x 3/4" hex bolts and (16) 5/16" flat washers. Attach the (2) 4" casters with brakes to the base. The casters with brakes should be attached to the side with the opening. The remaining (2) 4" swivel casters must attach to the other end on the base.</p> |
|  | <p>4. Turn the base over with it standing on the (4) 4" casters and secure the three lower upright support panels using (6) 3/8" x 3/4" hex bolts and (6) 3/8" x 7/8" flat washers.</p> <p>A – shown with one dot is located on the canister side.</p> <p>B – shown with two dots is located on the front side</p> <p>C – shown with three dots is located on the opposite end.</p> |

LAGUNA



5. Secure the base with (3) lower upright support panels to the unit using (6) 5/16" x 3/4" hex bolts and (6) 5/16" x 1" flat washers.



6. Secure the (3) upright support reinforcement plates using (12) 5/16" x 3/4" hex bolts and (12) 5/16" x 1" flat washers.

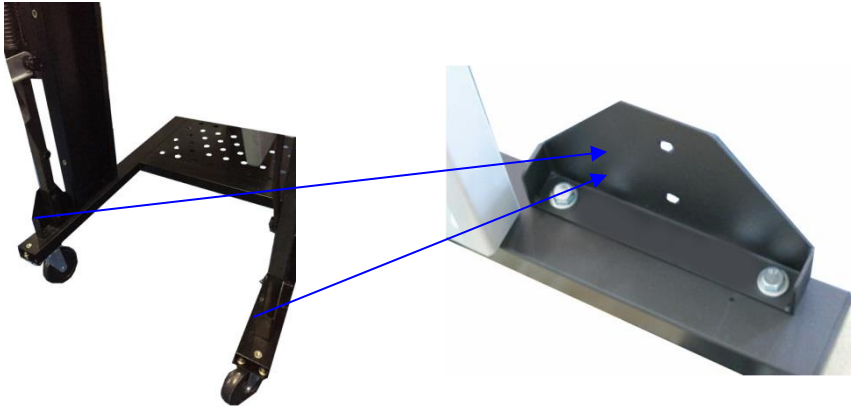


7. With the help of another person, lift the unit up carefully and rotate to the right-side-up with the motor on top and the wheels at the bottom.



8. Attach the canister filter end cap to the canister filter using the (4) latches. Cover the 4" hook up with the 4" rubber plug.

LAGUNA

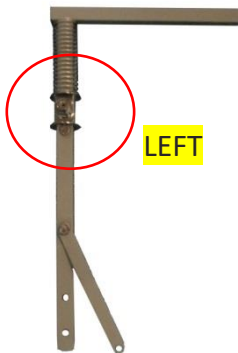


9. Secure the lower triangular support plate to the base using (2) 5/16" x 3/4" hex bolts and (2) 5/16" x 18 x 2mm flat washers. Follow the same steps for the opposite side.

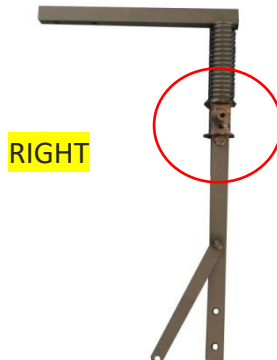


Side view

10. Secure the foot pedal support bracket to the lower upright support panel using (2) 5/16" x 1/2" carriage bolts, (2) 5/16" x 18 x 2mm flat washers and (2) 5/16" hex nuts. Make sure the armrest of the support bracket is facing up. Follow the same steps for the opposite side.



LEFT



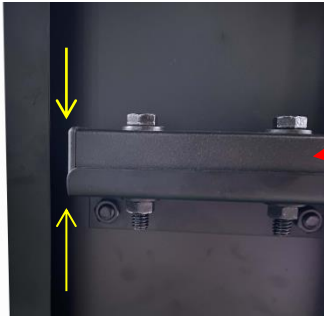
RIGHT

11. Locate the two-foot pedal bars provided. There is a left side and right side. To identify the correct side, look for the protruding nut, circled in red below. It should be facing upwards when you place the bars on the floor.

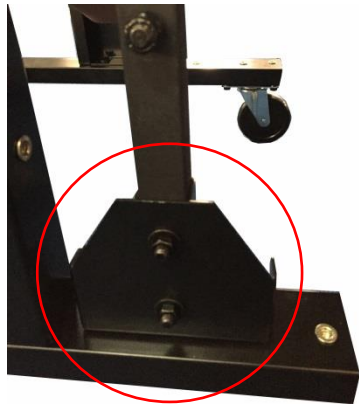


12. Confirm the foot pedal bar is the correct side and slide the Foot pedal bar into the opening on the lower upright support panel. Make sure the end of the bar is on the inside of the triangular support plate. Follow the same steps for the opposite side.

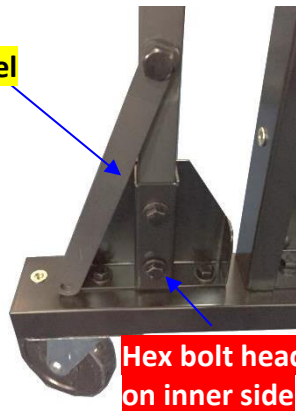
LAGUNA



13. Secure the top end of the foot pedal bar to support bracket using (4) 5/16"x1-3/4" hex bolts, (8) 5/16"x18x2mm flat washers and (4) 5/16" hex nuts. Make sure the foot pedal bar is pushed all the way to the end of the support bracket (indicated by yellow arrows). Follow the same steps for the opposite side.

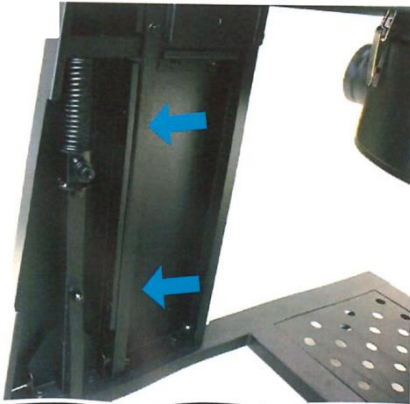


U Channel



Hex bolt head on inner side

14. Secure the base of the foot pedal bar to the triangular support plate by holding the lower support plate vertically up against the foot pedal bar and securing the U channel provided onto the foot pedal bar using (2) 5/16"x1-3/4" hex bolts, (4) 5/16"x18x2mm flat washers and (2) 5/16" hex nuts from the inside out. Follow the same steps for the opposite side.



15. Attach the cover plate over the foot pedal assembly. Secure using (6) 1/4"x3/4" hex bolts and (6) 1/4"x19x2mm flat washers. Follow the same steps for the opposite side.

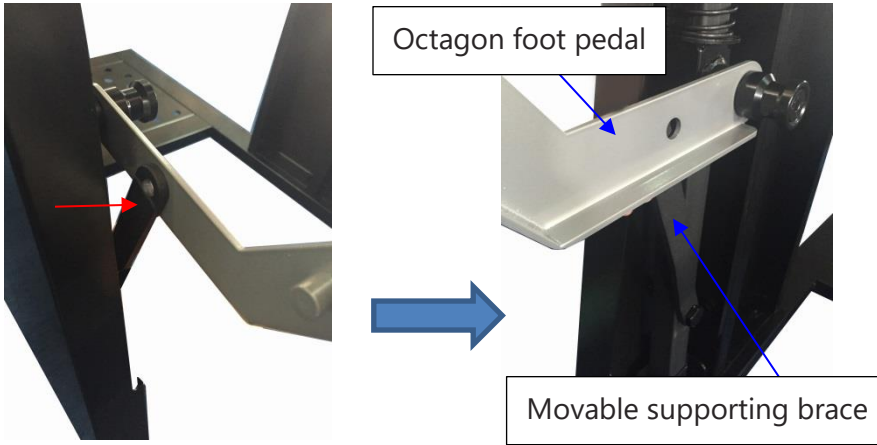


16. Attach the two ends of the Octagon foot pedal to the nut on the foot pedal bar.

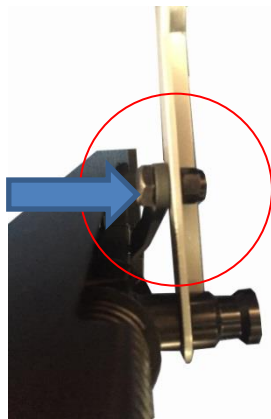
LAGUNA



17. Secure the topping to the nut on the foot pedal bar using (1) M8x30mm hex bolt. Follow this step on the opposite side.



18. Secure the movable supporting brace on the foot pedal bar with the octagon foot peddle using (2) 3/8"x21mm hex bolts. Make sure the bolt head is on the inside of the octagon foot pedal. Adjust the tightness of this bolt accordingly. If this bolt is too tight, the Octagon foot pedal will not work smoothly. When too loose it will not pick up the Octagon drum.



19. Secure the movable supporting brace on the foot pedal bar with the octagon foot peddle using (2) 3/8"x21mm hex bolts. Make sure the bolt head is on the inside of the octagon foot peddle. Adjust the tightness of this bolt accordingly. If this bolt is too tight, the Octagon foot pedal will not work smoothly. When too loose it will not pick up the Octagon drum.



You will find a tag on the cone with the following warning. Take note and remove tag when you have completed this step.

ATTENTION!

Do not tighten the 6 X bolts that mounts to cone flange to top of drum lid until you have perfectly aligned the drum lid up parallel to the uprights. This ingenious design allows you to swivel the drum lid about 30 degrees +/- Failure to do so will make the drum unable to fit in space between vertical uprights.

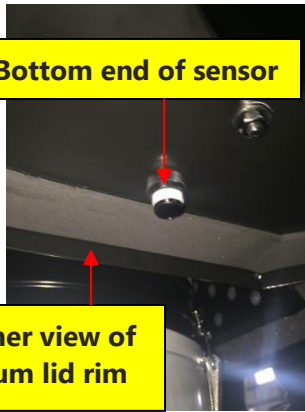
Important, note proper orientation of lid and position of LED light (red arrow) when attaching lid (red oval) to funnel. LED attached in step 22.

20. Apply foam tape to the cone flange before attaching the drum lid. Secure the Octagon drum lid to the cyclone funnel using (6) 5/16" x 3/4" hex bolts, (12) 5/16" x 1" flat washers and (6) 5/16" hex nuts. Make sure to first attach all the bolts before tightening. NOTE: The lid will turn when the bolts have not been tightened for alignment. Failure to do will result in the drum lid not being able to align with the drum.

LAGUNA



Bottom end of sensor



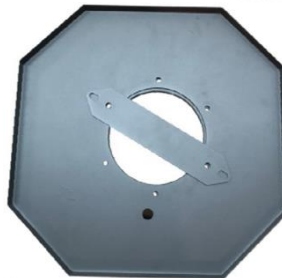
Inner view of drum lid rim

21. Attach the full drum detection sensor to the opening on the drum lid located behind the cyclone funnel. When securing the sensor make sure the end of the sensor is shorter than the drum lid rim. If it extends longer passed the rim, sensor detection will not function correctly.



22. Attach the LED light to the drum lid using (6) M4x10mm Philips Bolt, (6) 3/16" flat washers and (6) M4 hex nuts.

Crossbar



23. Attach the crossbar to the drum lid and tighten using the two bolts removed in the previous step. It does not matter which position you attach the crossbar.

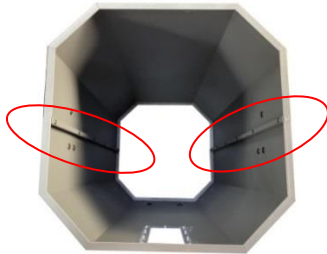


24. Assemble the Octagon drum. Locate the drum base panel, (it does not matter which side faces inside), and secure the (4) casters using (16) 5/16" x 3/4" hex bolts, (32) 5/16" x 1" flat washers and (16) 5/16" hex nuts.

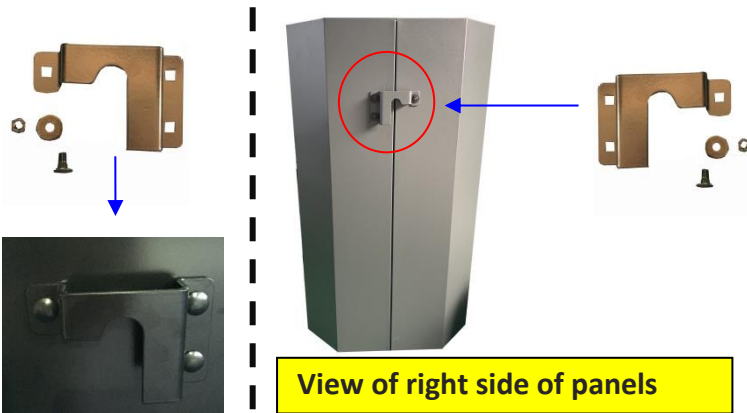
LAGUNA



25. Attach the handles to the top and bottom end on the front panel with the window display using (4) flat head Philip bolt, (4) 5/16" x 7/8" flat washers and (4) 5/16" hex nuts. Note that the head of the Philip bolt must be inserted from the handle with the hex nut and washer on the inside of the drum.



26. Take the Octagon drum front and back panels and assemble by securing with (12) M4 x 12mm sheet metal screws.



27. One the left and right side you will find three bolt holes. Take the matching side plate and secure to the outside of the panel using (6) 1/4" x 1/2" carriage bolts, (6) 1/4" x 1" flat washers and (6) 1/4" hex nuts. Insert the head of the carriage bolt from the inside of the drum with the washers and nuts on the outside of the drum.

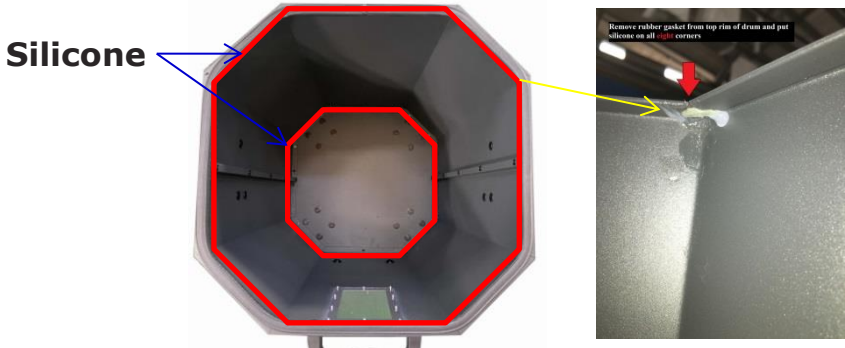
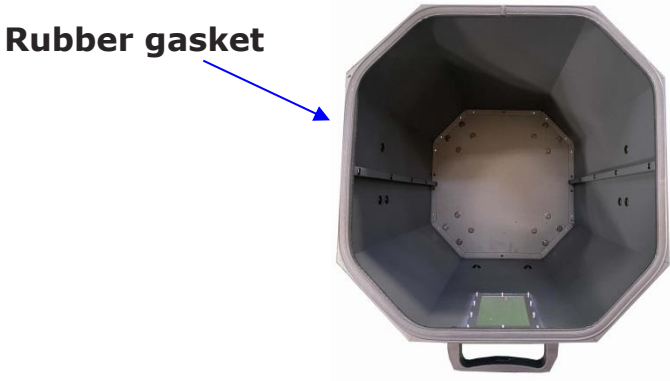




Plastic Caps,
installed inside drum



28. Secure the Octagon base panel to the bottom of the drum using (22) M4 Sheet Metal screws to secure tightly. Make sure the head of the screw is on the outside of the drum. Cover all the screw ends (tips) with the Plastic End Caps on the inside of the drum! It is important to install all of the Plastic End Caps to prevent damage to the collection bag or injury when cleaning.

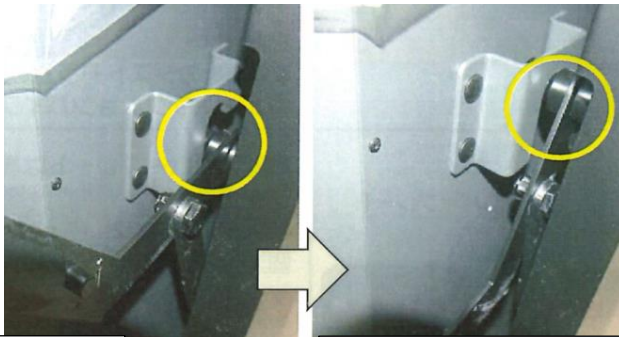
LAGUNA

| | |
|--|---|
|  <p>Silicone</p> | <p>29. Once completing the assembly, keep the drum laying on its side to apply silicone (not included) to the inside of the drum, including the base and the top rim of the drum before the rubber seal has been attached to seal and prevent air leakages. You will need to use a caulking gun (not supplied).</p> |
|  <p>Rubber gasket</p> | <p>30. Attach the rubber gasket to the top inner edges of the Octagon drum. The wider end of the gasket goes up. Use tin snips to trim any excess rubber gasket after completing the seal.</p> |
|  | <p>31. Insert the plastic debris collection bag inside the Octagon drum. Open and spread out the plastic bag to the corners and edges</p> |
|  <p>Drum insert</p> | <p>32. Use (24) Round head Philips bolts 3/16"x1/2" and (24) Cap nut 3/16" to assemble the drum insert together. Place the drum insert inside over the plastic bag in the Octagon drum.</p> |

LAGUNA



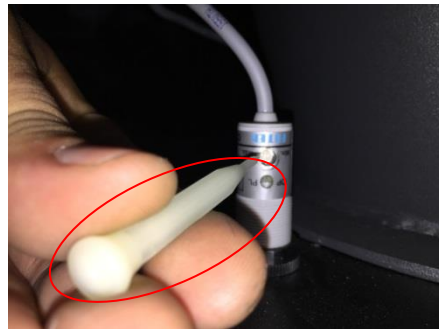
33. Lift the foot pedal bar. Align the Octagon drum window to the center point of the drum lid and push the drum in. Lower the foot pedal bar to seal the drum tight for normal machine operation.



Drum not aligned

Drum is aligned and locked

34. Make sure when aligning the drum that both the left and right-side lift plates are over the topping on the foot pedal bar assembly before lifting the foot peddle bar up. When not aligned, the drum will not be fully sealed and will interfere with the air flow.



35. Using the white plastic pin, insert the sharp point into the top end of the proximity sensor that is on top of the drum lid. You will find a small hole to on top where you can turn clockwise or counterclockwise.

※Clockwise: Lowers dust waste level in drum (Less full drum)

※Counterclockwise: Increases dust waste level in drum (Fuller drum)



36. Install the intake splitter 6" by 4" x 2 ports to the intake using (3) M4 x 12mm sheet metal screws. Attach the rubber caps to each 4" port.



Serial# plate

37. All the assembly steps have been completed.

LAGUNA

POWER SUPPLY

Power Supply Circuit Requirements

The power source circuit for your machine must be grounded and rated for the amperage given below. Never replace a circuit breaker on an existing circuit with one of higher amperage without consulting a qualified electrician to ensure compliance with wiring codes. **If you are unsure about the wiring codes in your area or you plan to connect your machine to a shared circuit, consult a qualified electrician.**

Circuit Size (110V)25 Amp min.
Circuit Size (220V)15 Amp min.



IN ALL CASES, MAKE CERTAIN THE RECEPTACLE IN QUESTION IS PROPERLY GROUNDED. IF YOU ARE NOT SURE, HAVE A QUALIFIED ELECTRICIAN CHECK THE RECEPTACLE.

110 VOLT Single-Phase Operation

The motor supplied with your machine is a dual voltage, 110/220 Volt motor. It is shipped ready-to-run for 110 Volt operation. However, it can be converted for 220 Volt operation.

NOTE: An (appx.) 8' cord is included and can be used for 110 Volt or 220 Volt operation. A "plug" is NOT included and must be installed by a qualified technician.

A qualified electrician should do the conversion, or the machine can be taken to an Authorized Dealer Service Center. When completed, the machine must conform to the National Electric Code and all local codes and ordinances.

The machine is converted by re-wiring the motor for 220 Volts, and **replacing the components listed in "110V to 220V Conversion"**.

CAUTION

NOTICE

This Machine is prewired for 110V. If you plan to operate the machine at 220V, you must **replace several components and rewire the motor at the junction box.**

LAGUNA

110V to 220V Conversion

WARNING

READ AND UNDERSTAND ALL WARNINGS AND OPERATING INSTRUCTIONS BEFORE USING THIS EQUIPMENT. Failure to follow all instructions listed below, may result in electric shock, fire, and/or serious personal injury or property damage.

Before removing any parts, turn OFF the machine and remove the power source.

The conversion kit, **PF1CONV220V**, includes the parts required, (*except for a 220V plug) for conversion to 220 Volt:

- **PDCPF-ACM220V** → Autoclean motor 220V.
- **PDCPF-ACM220V-C** → Autoclean capacitor 1.5uF/450VAC
- **PDCPF15110-220-OV** → Overload protector 15A
- *PLUG, 220 Volt (not available from Laguna Tools, local electrician to supply)

1. Change the wiring within the **1.5HP motor** to 220 Volt wiring according to the wiring diagram located on the inside cover of the junction box.
2. Remove the Control panel by loosening the four bolts circled (Fig. 7) to access the box inside.

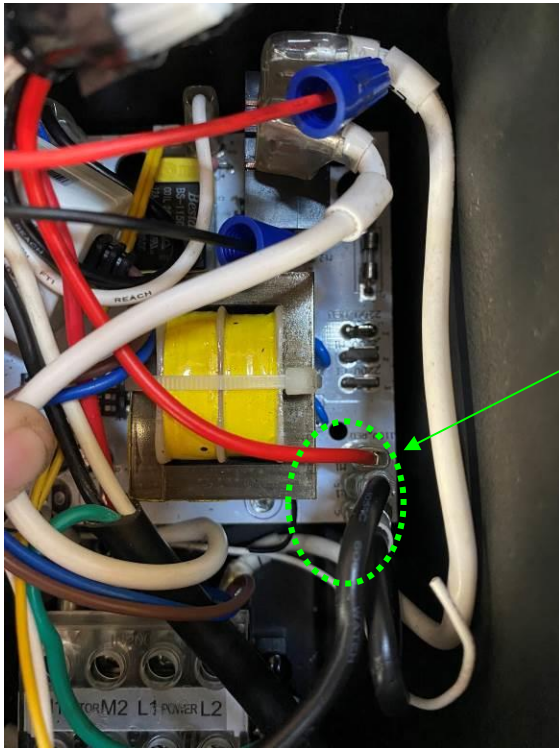


Figure 7: Control Panel



Figure 8: Control Panel/Box Wiring

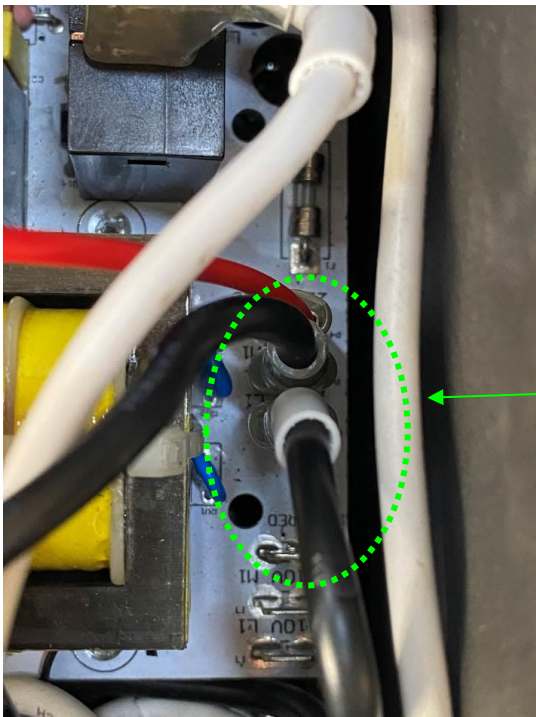
3. Inside the Control Box remove the connectors (L1, M1, 110V RED) (Fig. 9). Also refer to the electrical diagrams at the end of these instructions for reference.



Use pliers to carefully remove these two electrical connections. The connectors may get damaged if pulled with excessive force.

Figure 9: Removing wires

4. Reattach each connector to the 220V location, L1, M1, 220V RED (Fig. 10). Also refer to the electrical diagrams at the end of these instructions for reference.



Figures 10 & 10A: Attaching wires to 220 Volt connectors

5. Remove the Autoclean motor capacitor (6uF/250VAC) by disconnecting the two yellow connectors and replace it with the auto clean motor capacitor (1.5uF/450VAC). Make sure the two yellow connectors are connected in the same location as shown below. Always connect on the same side.

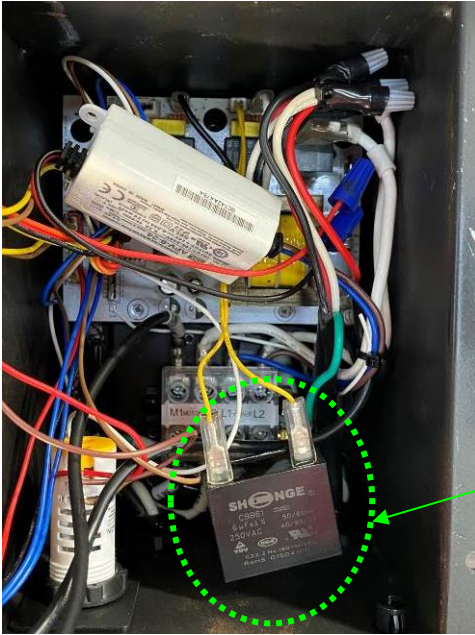


Figure 11: Replacing Capacitor

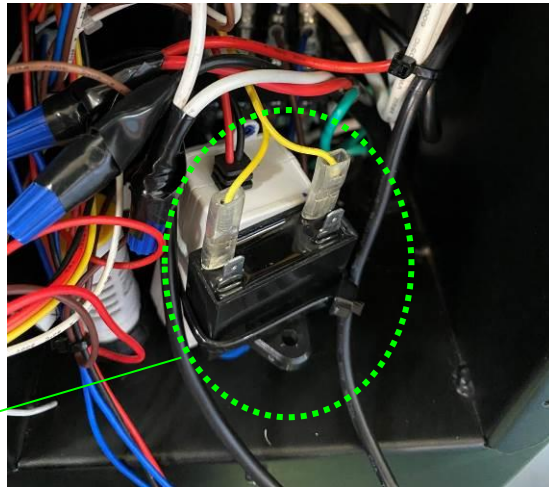


Figure 12: Replacing Capacitor

6. Remove the 25A overload protector from the front control panel by first removing the two connectors.



Figure 13: Removing 110V Overload Protector

7. Loosen the bolt holding the onboard Overload Protector using a wrench.



Figure 14: Replacing Overload Protector

8. Replace with the 15A overload protector and close the control panel with the four bolts removed in step 1.
9. Open the junction box on the Autoclean motor and disconnect the 110V wiring.



Figure 15: Junction Box



Figure 16: 110V Wiring, Junction Box

110V wiring shown in photo

9A. Release the spring-loaded band clamp at the bottom of the canister filter and remove the plastic debris bag.



Figure 16A: Releasing bag clamp

9B. Remove the bolt and washer from the bottom, center of the flap pivot assembly using a 12mm wrench.



Figure 16B: Removing flap pivot bolt (underneath)

9C. While supporting the canister filter assembly from the bottom, release the spring-loaded band clamp from the top of the canister filter assembly.

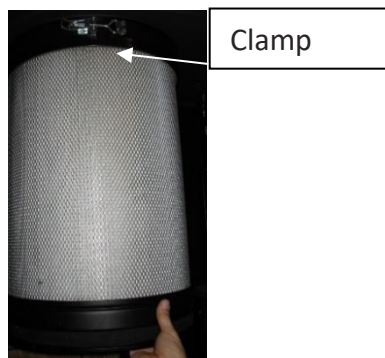


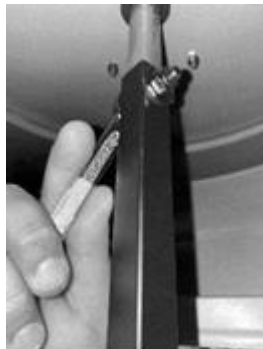
Figure 16C: Hold canister at bottom when releasing top clamp.

9D. Remove the canister filter by carefully lowering the canister. Be careful to tilt the top of canister, if necessary, to clear the paddle branches.



Figures 16D & 16E: Disassembling canister for cleaning

9E. Remove the rotation shaft from the cleaning spindle inside the dust chute by loosening one 5/16" x 1-1/2" hex bolt, two 5/16" x 18 x 2 flat washers and one 5/16" lock nut.



Figures 16F & 16G: Removing rotation shaft

9F. Remove the Autoclean plate by loosening the (12) 3/16" x 1/2" sheet metal screws.



Figures 16H & 16K: Removing Autoclean Plate

LAGUNA

10. Loosen the four bolts on the 110V Autoclean motor that is connecting to the gear motor below. ONLY remove the top (round) 110V Autoclean motor, do not remove the (square) gearbox.



NOTE: The new gearbox and existing gearbox are interchangeable.

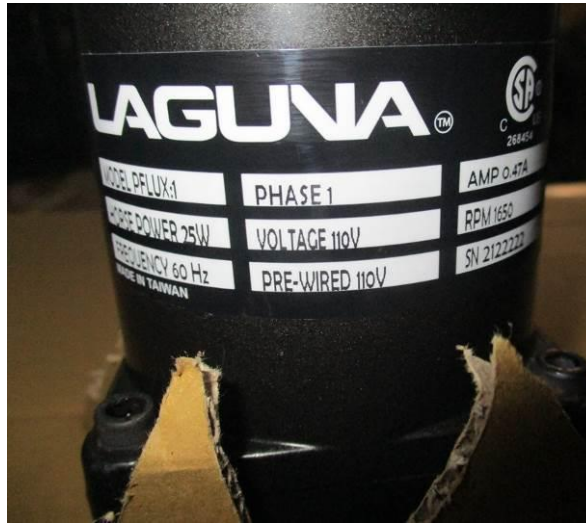


Figure 17: Autoclean Motor Mounting Bolts Figure 18: Autoclean Motor

11. Attach the 220V Autoclean motor by using the four bolts removed in the previous step.
12. Open the junction box of the 220V Autoclean motor and connect the wiring per figures 19 & 20. Fig. 19 shows the wires connected at the bottom and Fig. 20 shows the top of the same junction box on the Autoclean motor. Close all electrical box(es) and test system.

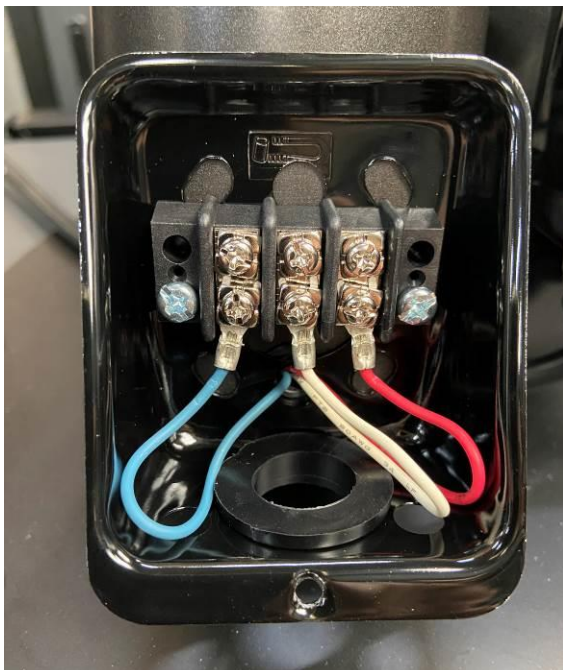
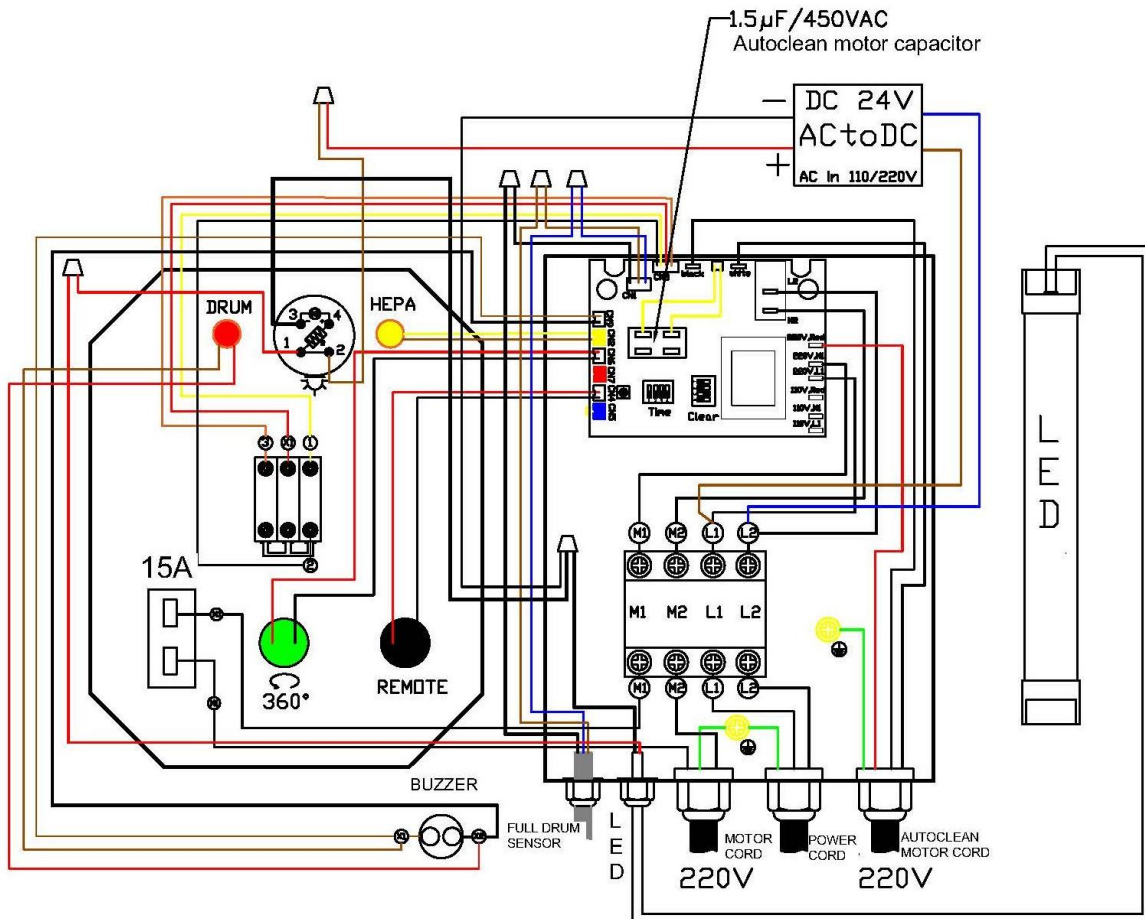
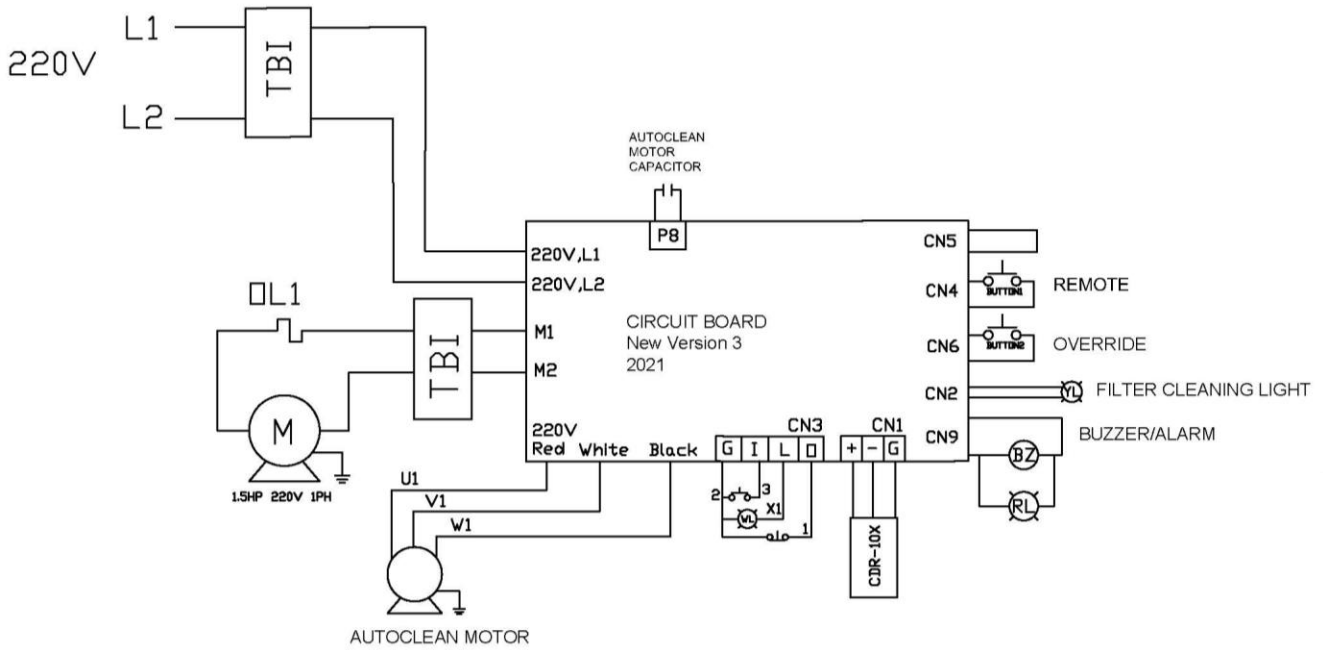
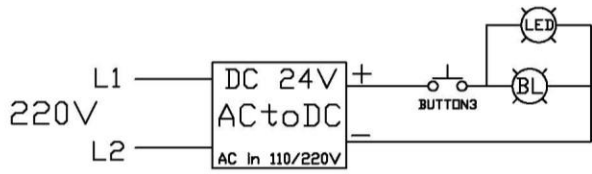


Figure 19: 220V Bottom Wiring in Junction Box

Figure 20: 220V Top Wiring in Junction Box

LAGUNA

220 Volt Wiring Diagrams (Figures: 21 & 22)



LAGUNA

OPERATION

1. Make sure at least one blast gate is open, if connected to a dust collection system with blast gates.

CAUTION

Never operate dust collector with all blast gates closed!

2. Confirm the electrical supply is correct and connected to machine.
3. Make sure no one is working on or doing maintenance to dust collector.
4. To start, press the ON button on either the ON/OFF switch or remote control.
5. To stop, press the OFF button on either the ON/OFF switch or remote control.

MAINTENANCE

CLEANING THE FILTER

This PFLUX1 is equipped with auto clean every 10 minutes for 10 seconds one direction and another 10 seconds the other direction. The cleaning will continue for one cycle (10 seconds clockwise, 10 seconds counterclockwise when you shut the machine off. While the canister is cleaning the yellow LED light on the control panel will illuminate showing that it is in the process of cleaning.

There is a HEPA filter replacement indicator, which is the same yellow LED light as the cleaning one. This is based on a timer system and when 2000 hours of running is reached, the light indication would be flash constantly in one long, two short intervals meaning the HEPA filter would need to be replaced.

Pressing the REMOTE button five times will reset the flashing light.

To ensure proper operation of this Mobile Dust Cyclone, the HEPA canister filter must have adequate air flow. This means the filter must be regularly maintained by carefully blowing the filter clean using compressed air and an air gun to release built-up particulates trapped between the filter pleats.

CAUTION

DISCONNECT MACHINE FROM POWER!

For heavy duty users, it is recommended to use compressed air on a weekly basis to maintain maximum filtration efficiency and longer life span of the filter.

1. Keep your cyclone switched on and operating, open both sides of the Canister filter shield doors. Connect the 4" flex hose from the cyclone to the 4" hook up on the canister end cap.



Figure 23: Canister Filter Shield

2. While the cyclone is collecting the dust from inside the canister end cap; use compressed air and an air gun and blow the outer surface of the canister.
3. After cleaning the filter with the compressed air gun, follow the steps in the next section to remove the end cap to empty out any dust left inside.

EMPTYING THE CANISTER END CAP

Periodically check the canister end cap, if it is more than one third full, it is recommended that you empty it.

NOTE: If the canister end cap gets too full, the dust particulates may be recirculated back into the canister filter obstructing air flow and exposing the user to potentially harmful particulates.

1. Release the (4) latches around the canister end cap to remove canister.
2. Empty and re-attach using the latches.

EMPTYING THE DRUM

Periodically inspect the contents of the drum and empty as needed. To inspect the contents of the drum:

1. Raise the drum foot pedal bar to lower the drum to the floor.
2. Roll it away from the machine, inspect and empty as needed.

ROUTINE INSPECTION

It is a good idea to routinely inspect any quality woodworking tool in order to keep it in optimum condition. This includes inspecting all hardware for tightness, ensuring the filter is clean, and cleaning debris and grime from any surfaces and moving parts.

CIRCUIT BOARD REPLACEMENT

WARNING

READ AND UNDERSTAND ALL WARNINGS AND OPERATING INSTRUCTIONS BEFORE USING THIS EQUIPMENT. Failure to follow all instructions listed below may result in electric shock, fire, and/or serious personal injury or property damage.

Before removing any parts, turn OFF the machine and remove the power source!

Circuit Board replacement part # PDCCFPF-ICV3 (2nd Generation, V3 110 Volt & 220 Volt)

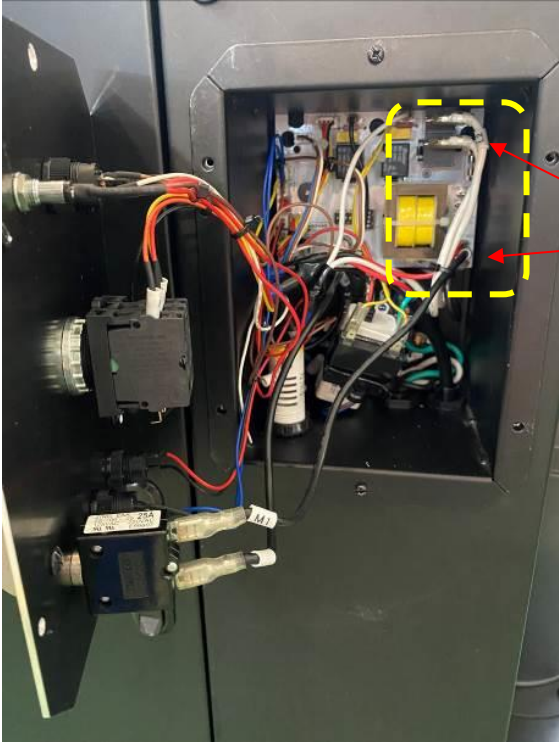
1. Remove the Control Panel Face from the Control Box by removing the screws from the panel.



Figure 24: Control Panel

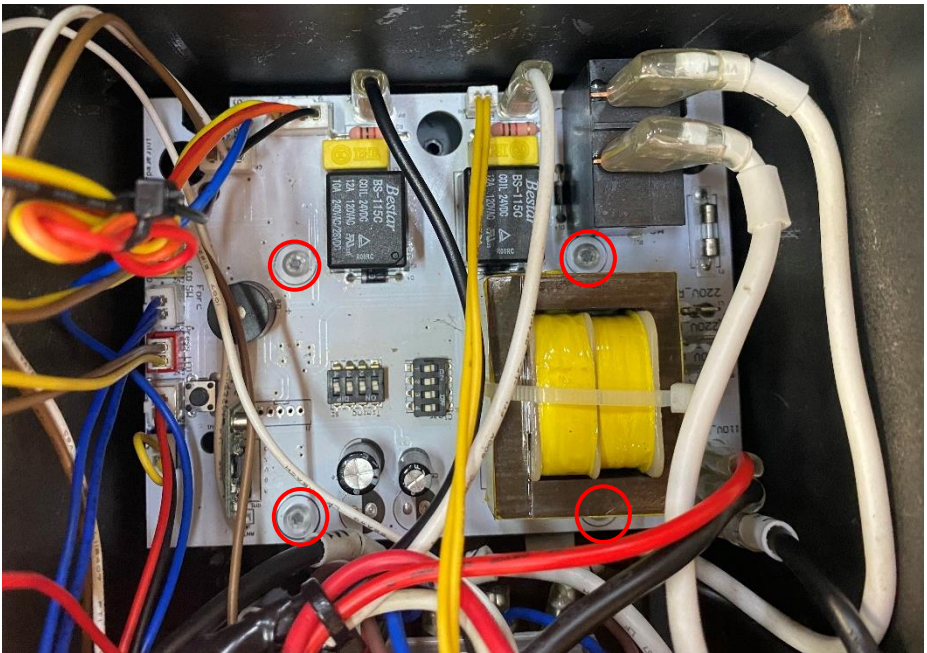
NOTE: It will be helpful to take a picture of the circuit board with all of the electrical connections attached and use as a reference when installing the new circuit board. Also refer to the chart listing the new installation and connections.

2. Remove all the electrical connectors from the circuit board. Pull each connector straight out using a pair of pliers so as to not damage the connector, connection or wire.



Use pliers to carefully remove these pins. The connectors may get damaged if pulled by force.

Figure 25: Control Box with cover removed



Circuit Board mounting screws (4) circled.

Figure 26: Circuit Board Mounting Screws (4)

3. Remove the old Circuit Board by removing the screws securing the Circuit Board to the Mounting Plate
4. Install the new Circuit Board onto the Mounting Plate within the Control Box using the same mounting screws.
5. Attach all wires to the new Circuit Board according to the **110 Volt** wiring diagram, reference below and to your pictures. Re-connect power cord and motor cord to Terminal Block according to wiring diagram(s).

CAUTION

If replacing a circuit board previously wired for 220 Volt, make certain to attach wires to circuit board for the appropriate voltage! Refer to 220 Volt Wiring Diagram

WIRING DIAGRAM 110 Volt

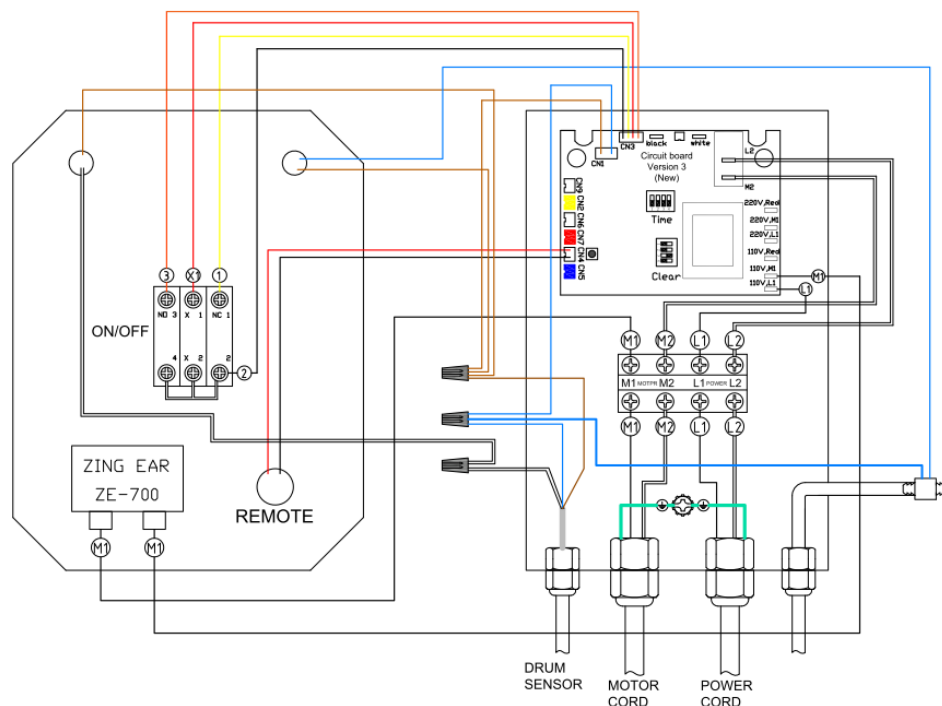


Figure 27: 110 Volt Wiring Diagram with new Circuit Board



TROUBLESHOOTING

| Symptom | Possible Cause | Possible Solution |
|--|---|---|
| Machine does not start or a breaker trips. | Power supply switched OFF or is faulty. | Ensure power supply is ON and has the correct voltage. |
| | Wall fuse/circuit breaker is blown/tripped. | Ensure adequate circuit size; install inlet restrictor, replace weak breaker. |
| | Faulty remote control. | Replace batteries; ensure unobstructed line-of-sight and signal range. |
| | Remote receiver is faulty. | Inspect receiver circuit board; replace if faulty. |
| | Incorrectly wired motor connection. | Rewire or call certified service technician or electrician. |
| | On-board circuit breaker is tripped. | Allow motor to cool, improve ventilation, press reset button. |
| | Wiring is open/has high resistance. | Check for broken wires or poor connections, repair as necessary. |
| | Faulty power switch. | Replace switch. |
| Excessive vibration or noise during operation. | Motor is at fault. | Test/repair/replace. |
| | Loose component. | Inspect and tighten all bolts/nuts. |
| | Loose or broken motor mount. | Tighten or replace as needed. |
| | Motor fan hitting fan cover. | Check fan and cover; replace as needed. |
| | Bad motor bearings. | Rotate shaft manually, check for grinding (noise) or loose shaft, replace bearings if needed. |

LAGUNA

| | | |
|--|--|---|
| <p>Loud, repetitive noise, or excessive vibration coming from cyclone</p> | <p>Machine is on uneven surface.</p> <p>Damaged/Unbalanced impeller.</p> <p>Loose connections.</p> <p>Impeller is loose.</p> <p>Motor fan hitting fan cover.</p> | <p>Stabilize on a flat surface.</p> <p>Inspect impeller for dents, bends, loose fins. Replace if needed.</p> <p>Check and re-tighten all fasteners.</p> <p>Replace the motor and impeller.</p> <p>Check fan and cover; replace as needed.</p> |
| <p>Dust cyclone does not adequately collect dust or chips; poor performance.</p> | <p>Canister end cap is full.</p> <p>Filter is dirty.</p> <p>Restricted duct line.</p> <p>Suction (hose) route is too long or has too many sharp bends.</p> <p>Wet lumber is clogging ducts.</p> <p>Leaks in the duct work or too many open ports.</p> <p>Inadequate velocity in the main suction line.</p> <p>Wrong size ducting/ports used.</p> | <p>Empty canister end cap.</p> <p>Clean filter.</p> <p>Clean inlet splitter.</p> <p>Move machine closer to the point of suction, and rerun ducts to eliminate sharp bends.</p> <p>Use lumber with less than 20% moisture content.</p> <p>Repair all duct leaks and close any ports not being used.</p> <p>Increase velocity by opening 1 or 2 more blast gates to different branch lines.</p> <p>Re-size and re-install ducts and fittings.</p> |
| <p>Sawdust being blown into the air from the dust cyclone</p> | <p>Band clamp or end cap is not secure.</p> <p>Loose or damaged seals.</p> | <p>Re-install ensuring a tight fit.</p> <p>Replace seals and gaskets.</p> |

SECTION A
(Close up view)

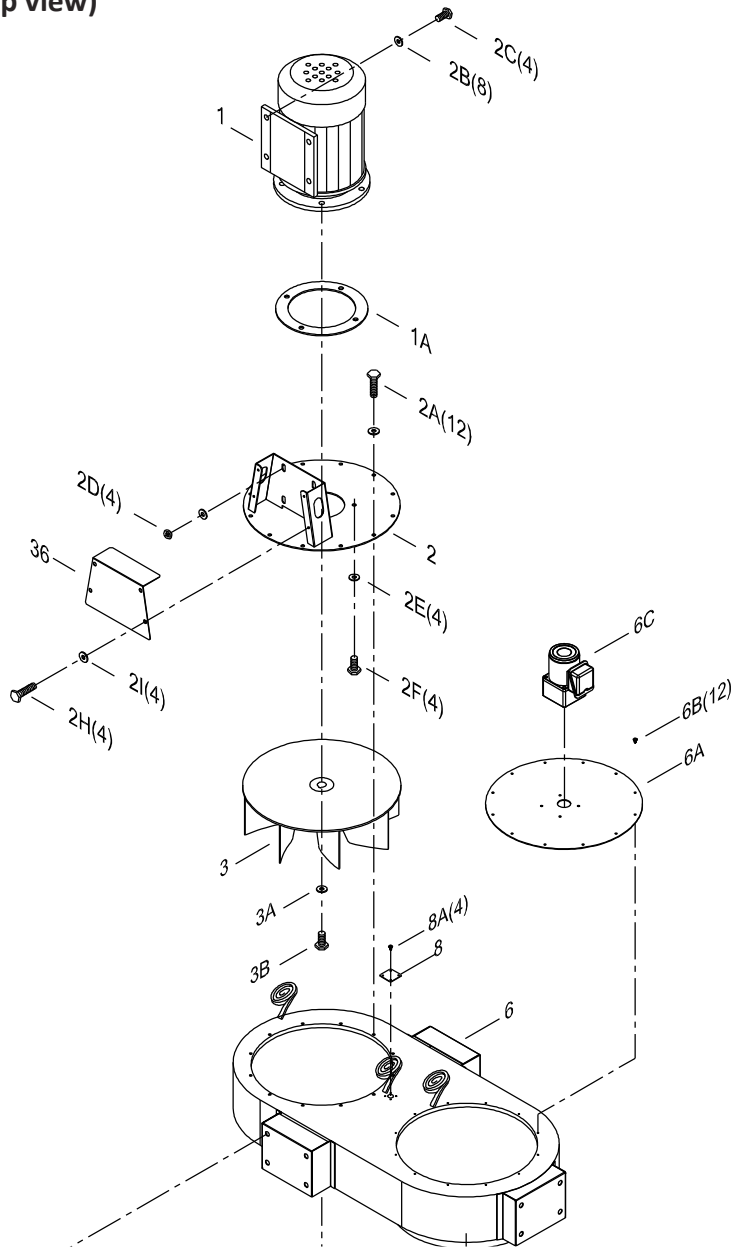


Figure 48: Fan, Motor & Switch

**SECTION B
(Close up view)**

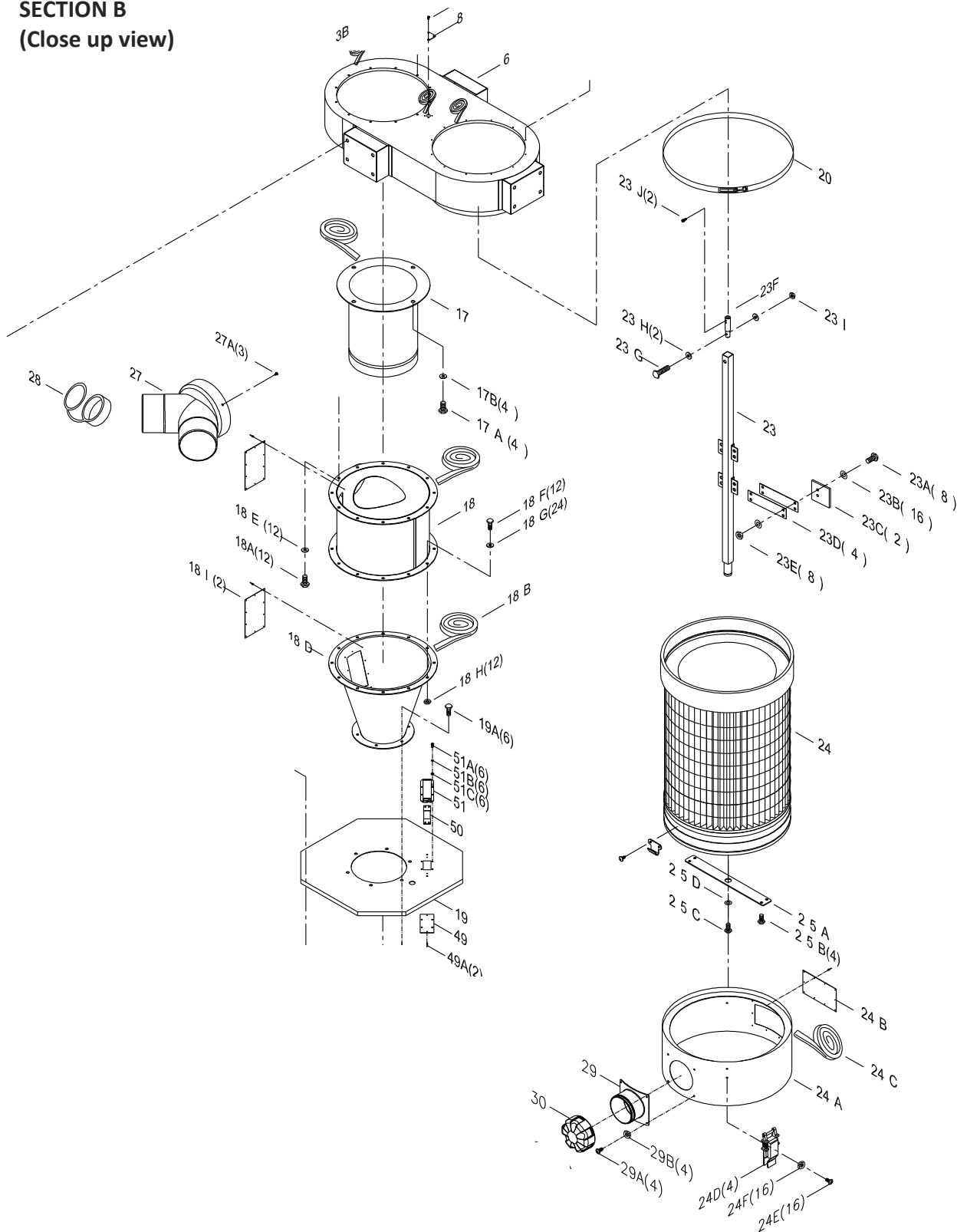


Figure 49: Cyclone, Canister & Barrel

1.5HP Mobile Dust Cyclone Manual

SECTION C (Close up view)

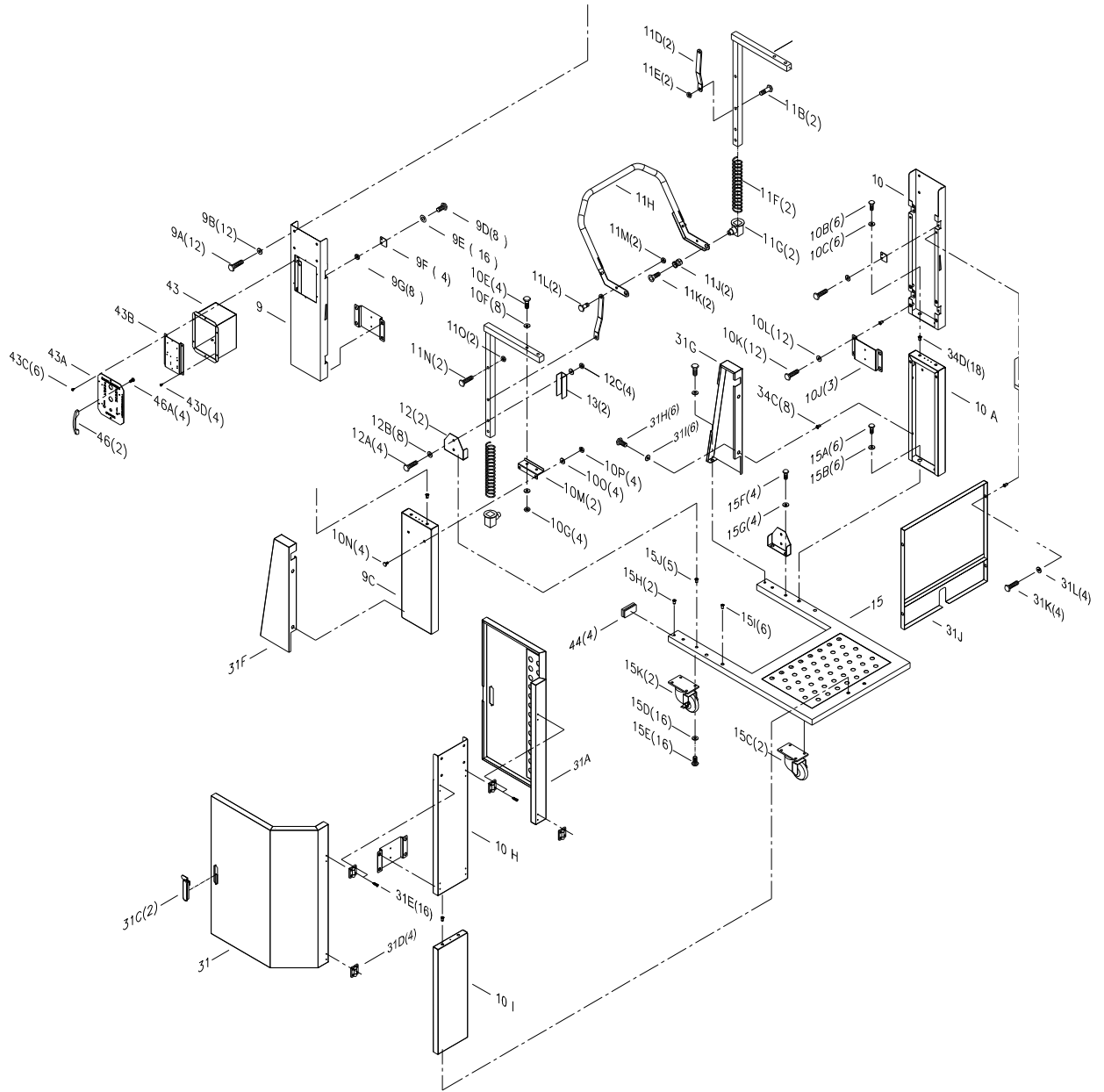


Figure 50: Panels & Lock

SECTION D (Close up view)

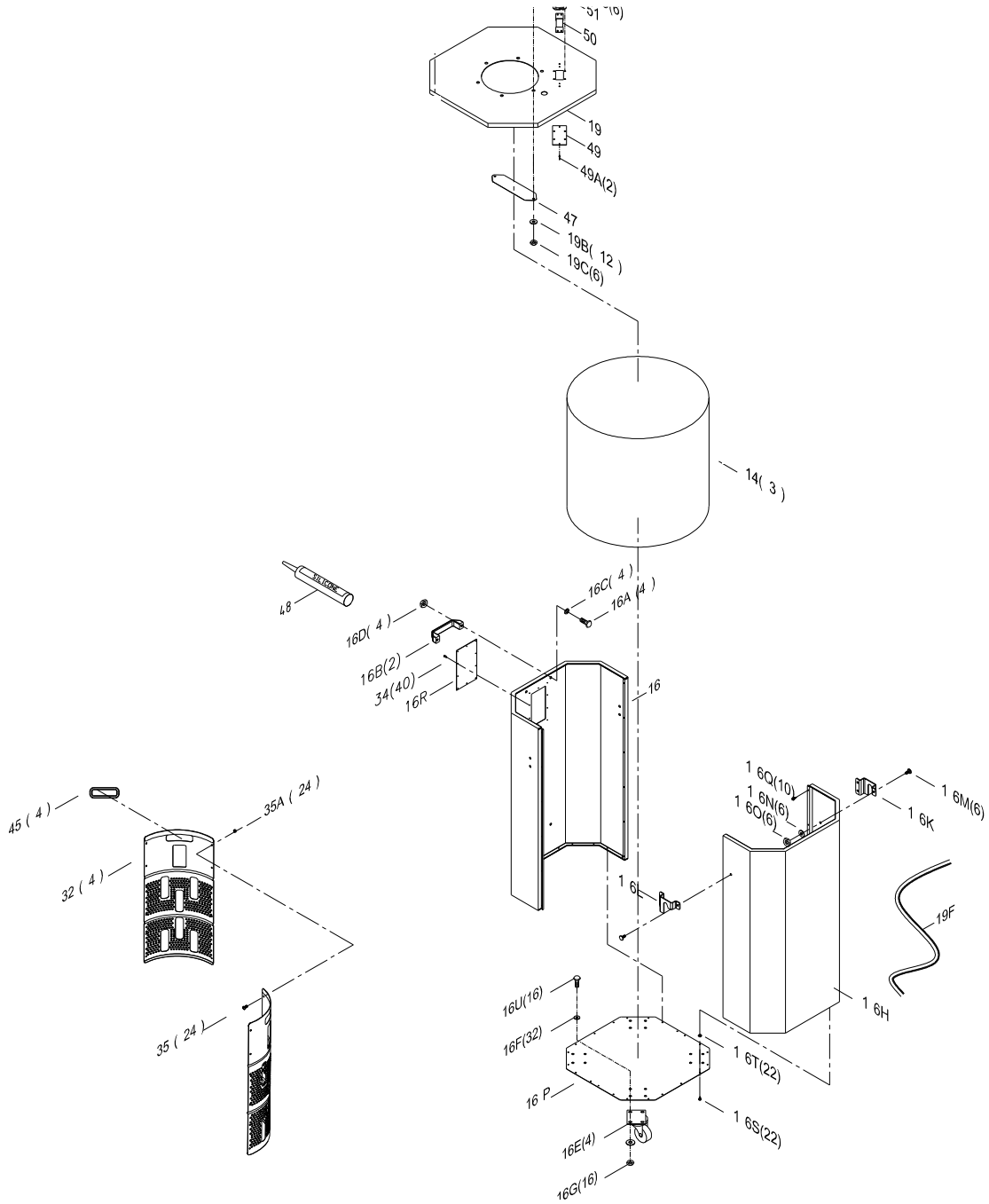


Figure 51: Barrel & insert

Parts List

| No | Part Number | Description | QTY | No | Part Number | Description | QTY |
|----|----------------|---|-----|-----|-----------------|--|-----|
| 1 | PDCPF15110-1 | MOTOR 1.5HP/110V/60Hz/1Ph | 1 | 9E | PDCPF15110-9E | FLAT WASHER 1/4"x13x1mm | 16 |
| 1A | PDCPF15110-1A | MOTOR GASKET | 1 | 9F | PDCPF15110-9F | DOOR STOP PLATE | 4 |
| 2 | PDCPF15110-2 | MOTOR SUPPORT BASE | 1 | 9G | PDCPF15110-9G | HEX NUT 1/4" | 8 |
| 2A | PDCPF15110-2A | HEX LOCK BOLT 5/16" x 5/8" | 12 | 10 | PDCPF15110-10V2 | TOP UPRIGHT SUPPORT A V2.2021 | 1 |
| 2B | PDCPF15110-2B | FLAT WASHER 3/8"x23x2mm | 8 | 10A | PDCPF15110-10A | LOWER UPRIGHT SUPPORT THREE DOT | 1 |
| 2C | PDCPF15110-2C | HEX BOLT 3/8" x 1" | 4 | 10B | PDCPF15110-10B | HEX BOLT 5/16" x 3/4" | 6 |
| 2D | PDCPF15110-2D | HEX NUT 3/8" | 4 | 10C | PDCPF15110-10C | FLAT WASHER 5/16"x18x2mm | 6 |
| 2E | PDCPF15110-2E | FLAT WASHER 5/16"x18x2mm | 4 | 10E | PDCPF15110-10E | HEX BOLT 5/16" x 1-3/4" | 4 |
| 2F | PDCPF15110-2F | HEX BOLT 5/16" x 3/4" | 4 | 10F | PDCPF15110-10F | FLAT WASHER 5/16"x18x2mm | 8 |
| 2H | PDCPF15110-2H | HEX BOLT 1/4" x 3/4" | 4 | 10G | PDCPF15110-10G | HEX NUT 5/16" | 4 |
| 2I | PDCPF15110-2I | FLAT WASHER 1/4"x19x1mm | 4 | 10H | PDCPF15110-10H | TOP UPRIGHT SUPPORT ONE DOT (1A) | 1 |
| 3 | PDCPF15110-3 | FAN 340mm | 1 | 10I | PDCPF15110-10I | LOWER UPRIGHT SUPPORT ONE DOT | 1 |
| 3A | PDCPF15110-3A | FLAT WASHER 5/16"x30x3mm | 1 | 10J | PDCPF15110-10J | UPRIGHT SUPPORT REINFORCEMENT PLATE | 3 |
| 3B | PDCPF15110-3B | HEX BOLT 5/16"x3/4" | 1 | 10K | PDCPF15110-10K | HEX BOLT 5/16" x 3/4" | 12 |
| 6 | PDCPF15110-6 | DUST CHUTE | 1 | 10L | PDCPF15110-10L | FLAT WASHER 5/16"x18x2mm | 12 |
| 6A | PDCPF15110-6A | CANISTER COVER PLATE | 1 | 10M | PDCPF15110-10M | FOOT PEDAL BAR SUPPORT | 2 |
| 6B | PDCPF15110-6B | SHEET METAL THREAD BOLT 3/16" x 1/2" | 12 | 10N | PDCPF15110-10N | CARRIAGE BOLT 5/16"x1/2" | 4 |
| 6C | PDCPF15110-6C | AUTO CLEAN MOTOR | 1 | 10O | PDCPF15110-10O | FLAT WASHER 5/16"x18x2mm | 4 |
| 8 | PDCPF15110-8 | COVER PLATE | 1 | 10P | PDCPF15110-10P | HEX NUT 5/16" | 4 |
| 8A | PDCPF15110-8A | SHEET METAL THREAD BOLT M4x12mm | 4 | 11 | PDCPF15110-11 | FOOT PEDAL BAR | 2 |
| 9 | PDCPF15110-9V2 | TOP UPRIGHT SUPPORT B V2.2021 | 1 | 11A | PDCPF15110-11A | PLUG 25, 25 | 4 |
| 9A | PDCPF15110-9A | HEX BOLT 5/16" x 3/4" | 12 | 11B | PDCPF15110-11B | HEX BOLT 3/8" | 2 |
| 9B | PDCPF15110-9B | FLAT WASHER 5/16"x18x2mm | 12 | 11D | PDCPF15110-11D | MOVEABLE SUPPORT BRACE | 2 |
| 9C | PDCPF15110-9C | LOWER UPRIGHT SUPPORT TWO DOT (3B) | 1 | 11E | PDCPF15110-11E | HEX LOCK NUT 3/8" | 2 |
| 9D | PDCPF15110-9D | HEX BOLT 1/4"x5/8" | 8 | 11F | PDCPF15110-11F | SPRING 42mm x 242mm | 2 |

LAGUNA

| No | Part Number | Description | QTY | No | Part Number | Description | QTY |
|-----|-----------------|-----------------------------|-----|-----|------------------|-----------------------------------|-----|
| 11G | PDCPF15110-11G | SKID BLOCK | 2 | 16 | PDCPF15110-16V2 | OCTAGON DRUM FRONT PANEL V2.2021 | 1 |
| 11H | PDCPF15110-11H | OCTAGON DRUM FOOT PEDAL | 1 | 16A | PDCPF15110-16A | FLAT HEAD PHILIPS BOLT 5/16"x3/4" | 4 |
| 11J | PDCPF15110-11J | TOPPING 24x30mm | 2 | 16B | PDCPF15110-16B | HANDLE | 2 |
| 11K | PDCPF15110-11K | HEX BOLT M8x30mm | 2 | 16C | PDCPF15110-16C | FLAT WASHER 5/16"x23x2mm | 4 |
| 11L | PDCPF15110-11L | HEX BOLT 3/8" | 2 | 16D | PDCPF15110-16D | HEX NUT 5/16" | 4 |
| 11M | PDCPF15110-11M | HEX LOCK NUT 3/8" | 2 | 16E | PDCPF15110-16E | DRUM CASTER 3" | 4 |
| 11N | PDCPF15110-11N | HEX BOLT 3/8" x 1-1/2" | 2 | 16U | PDCPF15110-16U | HEX BOLT 5/16" x 3/4" | 16 |
| 11O | PDCPF15110-11O | HEX LOCK NUT 3/8" | 2 | 16F | PDCPF15110-16F | FLAT WASHER 5/16"x18x2mm | 32 |
| 12 | PDCPF15110-12 | TRIANGULAR SUPPORT PLATE | 2 | 16G | PDCPF15110-16G | HEX NUT 5/16" | 16 |
| 12A | PDCPF15110-12A | HEX BOLT 5/16" x 1-3/4" | 4 | 16H | PDCPF15110-16HV2 | OCTAGON DRUM BACK PANEL V2.2021 | 1 |
| 12B | PDCPF15110-12B | FLAT WASHER 5/16"x18x2mm | 8 | 16K | PDCPF15110-16K | LEFT SIDE PLATE | 1 |
| 12C | PDCPF15110-12C | HEX NUT 5/16" | 4 | 16L | PDCPF15110-16L | RIGHT SIDE PLATE | 1 |
| 13 | PDCPF15110-13 | LOWER SUPPORT PLATE | 2 | 16M | PDCPF15110-16M | CARRIAGE BOLT 1/4" x 1/2" | 6 |
| 14 | PDCPF15110-14V2 | PLASTIC BAG 610 x 1200mm | 3 | 16N | PDCPF15110-16N | FLAT WASHER 1/4"x19x2mm | 6 |
| 15 | PDCPF15110-15 | BASE | 1 | 16O | PDCPF15110-16O | HEX NUT 1/4" | 6 |
| 15A | PDCPF15110-15A | HEX BOLT 3/8" x 3/4" | 6 | 16P | PDCPF15110-16PV2 | OCTAGON DRUM BASE PANEL V2.2021 | 1 |
| 15B | PDCPF15110-15B | FLAT WASHER 3/8" x 23 x 2mm | 6 | 16R | PDCPF15110-16RV2 | WINDOW V2.2021 | 1 |
| 15C | PDCPF15110-15C | SWIVEL CASTER 4" | 2 | 16S | PDCPF15110-16SV3 | M4 SHEET METAL SCREW | 22 |
| 15D | PDCPF15110-15D | FLAT WASHER 5/16"x18x2mm | 16 | 16T | PDCPF15110-16TV3 | PLASTIC END CAP | 22 |
| 15E | PDCPF15110-15E | HEX BOLT 5/16" x 3/4" | 16 | 16Q | PDCPF15110-16Q | THREAD BOLT M4 x 12mm | 10 |
| 15F | PDCPF15110-15F | HEX BOLT 5/16" x 3/4" | 4 | 17 | PDCPF15110-17 | INTAKE CYLINDER | 1 |
| 15G | PDCPF15110-15G | FLAT WASHER 5/16"x18x2mm | 4 | 17A | PDCPF15110-17A | HEX BOLT 5/16" x 5/8" | 4 |
| 15H | PDCPF15110-15H | RIVET NUT 1/4" | 2 | 17B | PDCPF15110-17B | FLAT WASHER 5/16"x18x2mm | 4 |
| 15I | PDCPF15110-15I | RIVET NUT 3/8" | 6 | 18 | PDCPF15110-18 | CYCLONE BARREL | 1 |
| 15J | PDCPF15110-15J | RIVET NUT 5/16" | 5 | 18A | PDCPF15110-18A | HEX BOLT 5/16" x 3/4" | 12 |
| 15K | PDCPF15110-15K | SWIVEL CASTER W/BRAKES 4" | 2 | 18B | PDCPF15110-18B | FOAM TAPE 3 x 6mm x 8M | 1 |

LAGUNA

| No | Part Number | Description | QTY | No | Part Name | Description | QTY |
|-----|-----------------------|--------------------------------|----------|-----|-----------------------|--------------------------------------|----------|
| 18D | PDCPF15110-18DV2 | CYCLONE FUNNEL V2.2021 | 1 | 24D | PDCPF15110-24D | LATCH #98 | 4 |
| 18E | PDCPF15110-18E | FLAT WASHER 5/16"x18x2mm | 12 | 24E | PDCPF15110-24E | SHEET METAL BOLT 3/16"x3/8" | 16 |
| 18F | PDCPF15110-18F | HEX BOLT 5/16" x 3/4" | 12 | 24F | PDCPF15110-24F | HEX NUT 3/16" | 16 |
| 18G | PDCPF15110-18G | FLAT WASHER 5/16"x18x2mm | 24 | 25A | PDCPF15110-25A | ROTATION SHAFT BASE | 1 |
| 18H | PDCPF15110-18H | HEX NUT 5/16" | 12 | 25B | PDCPF15110-25B | SHEET METAL PHILIP BOLT 3/16" x 3/4" | 4 |
| 18I | PDCPF15110-18I | WINDOW | 2 | 25C | PDCPF15110-25C | HEX BOLT 5/16" x 3/4" | 1 |
| 19 | PDCPF15110-19V2 | OCTAGON DRUM LID V2.2021 | 1 | 25D | PDCPF15110-25D | FLAT WASHER 5/16" x 23 x 2mm | 1 |
| 19A | PDCPF15110-19A | HEX BOLT 5/16" x 3/4" | 6 | 27 | PDCPF15110-27 | INTAKE SPLITTER 6" x 4" x 2 | 1 |
| 19B | PDCPF15110-19B | FLAT WASHER 5/16"x18x2mm | 12 | 27A | PDCPF15110-27A | SHEET METAL BOLT M4 x 12mm | 3 |
| 19C | PDCPF15110-19C | HEX NUT 5/16" | 6 | 28 | PDCPF15110-28 | RUBBER CAP 4" FOR INTAKE | 1 |
| 19F | PDCPF15110-19F | RUBBER GASKET 1400mm | 1 | 29 | PDCPF15110-29 | PLASTIC BASE CONNETOR | 1 |
| 20 | PDCPF15110-20 | BAND CLAMP 400mm | 1 | 29A | PDCPF15110-29A | PH HD BOLT 3/16" x 3/8" | 4 |
| 23 | PDCPF15110-23V2 | ROTATION SHAFT V2.2021 | 1 | 29B | PDCPF15110-29B | HEX NUT 3/16" | 4 |
| 23A | PDCPF15110-23A | HEX BOLT 1/4" x 5/8" | 8 | 30 | PDCPF15110-30 | PLASTIC CAP 4" FOR END CAP | 1 |
| 23B | PDCPF15110-23B | FLAT WASHER 1/4" x 13 x 1mm | 16 | 31 | PDCPF15110-31 | CANISTER FILTER SHIELD DOOR-1 | 1 |
| 23C | PDCPF15110-23C | PADDLE | 2 | 31A | PDCPF15110-31A | CANISTER FILTER SHIELD DOOR-2 | 1 |
| 23D | PDCPF15110-23D | PADDLE BRANCH | 4 | 31C | PDCPF15110-31C | DOOR HANDLE | 2 |
| 23E | PDCPF15110-23E | HEX LOCK NUT 1/4" | 8 | 31D | PDCPF15110-31D | HINGE | 4 |
| 23F | PDCPF15110-23F | ROTATION SHAFT CONNECTION | 1 | 31E | PDCPF15110-31E | HEX BOLT M5x10mm | 16 |
| 23G | PDCPF15110-23G | HEX BOLT 5/16" x 1-1/2" | 1 | 31F | PDCPF15110-31F | COVER PLATE RIGHT | 1 |
| 23H | PDCPF15110-23H | FLAT WASHER 5/16"x18x2mm | 2 | 31G | PDCPF15110-31G | COVER PLATE LEFT | 1 |
| 23I | PDCPF15110-23I | HEX LOCK NUT 5/16" | 1 | 31H | PDCPF15110-31H | HEX BOLT 1/4"x3/4" | 6 |
| 24 | PDCPF15110-24 | HEPA FILTER 400 x 500mm | 1 | 31I | PDCPF15110-31I | FLAT WASHER 1/4"x19x1mm | 6 |
| 24A | PDCPF15110-24A | HEPA END CAP | 1 | 31J | PDCPF15110-31J | CANISTER FILTER SHIELD | 1 |
| 24B | PDCPF15110-24B | WINDOW | 1 | 31K | PDCPF15110-31K | HEX BOLT 1/4"x3/4" | 4 |
| 24C | PDCPF15110-24C | FOAM TAPE 5x20mmx1.3M | 1 | 31L | PDCPF15110-31L | FLAT WASHER 1/4"x19x1mm | 4 |

LAGUNA

| No | Part Number | Description | QTY | No | Part Number | Description | QTY |
|-----|------------------|---------------------------------------|-----|-----|-----------------------------|--------------------------------------|-----|
| 32 | PDCPF15110-32 | DRUM INSERT | 4 | 43G | PDCPF15110-43G | BUZZER/ALARM | 1 |
| 34 | PDCPF15110-34 | RIVET | 40 | 44 | PDCPF15110-44 | PLUG 30x60mm | 4 |
| 34C | PDCPF15110-34C | RIVET NUT 1/4" | 8 | 45 | PDCPF15110-45 | RUBBER HANDLE FOR DRUM INSERT | 4 |
| 34D | PDCPF15110-34D | RIVET NUT 5/16" | 18 | 46 | PDCPF15110-46 | CONTROL PANDLE HANDLE | 2 |
| 35 | PDCPF15110-35 | SHEET METAL BOLT 3/16"x1/2" | 24 | 46A | PDCPF15110-46A | PHILIP HD BOLT M4x6mm | 4 |
| 35A | PDCPF15110-35A | NUT 3/16" | 24 | 47 | PDCPF15110-47 | CROSSBAR | 1 |
| 36 | PDCPF15110-36 | MOTOR SWITCH SUPPORT BASE COVER PLATE | 1 | 48 | PDCPF15110-48 | SILICONE (not included) | 1 |
| 43 | PDCPF15110-43V2 | CONTROL BOX V2.2021 | 1 | 49 | PDCPF15110-49 | LED WINDOW | 1 |
| 43A | PDCPF15110-43AV2 | CONTROL PANEL V2.2021 | 1 | 49A | PDCPF15110-49A | RIVET 3-2 | 2 |
| 43B | PDCPF15110-43BV2 | CONTROL PANEL SUPPORT PLATE V2.2021 | 1 | 50 | PDCPF15110-50 | LED LIGHT | 1 |
| 43C | PDCPF15110-43C | ROUND HEAD BOLT M4x10mm | 6 | 51 | PDCPF15110-51 | LED LIGHT COVER | 1 |
| 43D | PDCPF15110-43D | PHILIP HD BOLT M4x6mm | 4 | 51A | PDCPF15110-51A | PHILIP HD BOLT M4x10mm | 6 |
| 43E | PDCPF15110-43E | BUZZER SUPPORT PLATE | 1 | 51B | PDCPF15110-51B | FLAT WASHER 3/16"x12x1mm | 6 |
| 43F | PDCPF15110-43F | PHILIP HD BOLT M4x6mm | 2 | 51C | PDCPF15110-51C | HEX NUT M4 | 6 |
| | | | | 52 | PDCPF15110-ICV3 (not shown) | Circuit Board (Gen 2,V3) (not shown) | 1 |



Parts List Hardware Bags

| REF # | PART NUMBER | DESCRIPTION | SPECIFICATION | QTY | INR PACK | MST R PACK | APPLICATION |
|-------|----------------|------------------------|----------------|-----|----------|------------|---|
| 19F | PDCPF15110-19F | RUBBER GASKET | 1400mm | 1 | | | |
| 16E | PDCPF15110-16E | DRUM CASTER | 3" | 4 | | | |
| 16S | PDCPF15110-16S | SHEET METAL BOLT | M4x 12mm | 22 | 1 | | |
| 16T | PDCPF15110-16T | PLASTIC CAP | EP0408 | 22 | | | |
| 16Q | PDCPF15110-16Q | THREAD BOLT | M4 x 12mm | 10 | 1 | | |
| 16M | PDCPF15110-16M | CARRIAGE BOLT | 1/4" x 1/2" | 6 | | | |
| 16N | PDCPF15110-16N | FLAT WASHER | 1/4" | 6 | 1 | 1 | OCTAGON DRUM Part#: PDCPF15110H -D |
| 16O | PDCPF15110-16O | HEX NUT | 1/4" | 6 | | | |
| 35 | PDCPF15110-35 | SHEET METAL BOLT | 3/16"x1/2" | 24 | 1 | | |
| 35A | PDCPF15110-35A | NUT | 3/16" | 24 | | | |
| | | PLASTIC PIN | | 1 | 1 | | |
| 16U | PDCPF15110-16U | HEX BOLT | 5/16" x 3/4" | 16 | 1 | 1 | |
| 16F | PDCPF15110-16F | FLAT WASHER | 5/16" | 32 | | | |
| 16G | PDCPF15110-16G | HEX NUT | 5/16" | 16 | | | |
| 16A | PDCPF15110-16A | FLAT HEAD PHILIPS BOLT | 5/16"x3/4" | 4 | 1 | 1 | |
| 16B | PDCPF15110-16B | HANDLE | | 2 | | | |
| 16C | PDCPF15110-16C | FLAT WASHER | 5/16" | 4 | | | |
| 16D | PDCPF15110-16D | HEX NUT | 5/16" | 4 | | | |
| 10N | PDCPF15110-10N | CARRIAGE BOLT | 5/16"x1/2" | 4 | 1 | 1 | DRUM LIFT Part#: PDCPF15110H -DL |
| 11M | PDCPF15110-11M | HEX LOCK NUT | 3/8" | 2 | | | |
| 11L | PDCPF15110-11L | HEX BOLT | 3/8" | 2 | | | |
| 11K | PDCPF15110-11K | HEX BOLT | M8x30mm | 2 | | | |
| 10E | PDCPF15110-10E | HEX BOLT | 5/16" x 1-3/4" | 4 | | | |
| 12A | PDCPF15110-12A | HEX BOLT | 5/16" x 1-3/4" | 4 | | | |
| 12C | PDCPF15110-12C | HEX NUT | 5/16" | 4 | | | |
| 10G | PDCPF15110-10G | HEX NUT | 5/16" | 4 | | | |
| 10P | PDCPF15110-10P | HEX NUT | 5/16" | 4 | | | |
| 11J | PDCPF15110-11J | TOPPING | 24x30mm | 2 | | | |
| 10F | PDCPF15110-10F | FLAT WASHER | 5/16" | 8 | | | |
| 10O | PDCPF15110-10O | FLAT WASHER | 5/16" | 4 | | | |
| 12B | PDCPF15110-12B | FLAT WASHER | 5/16" | 8 | | | |
| 15C | PDCPF15110-15C | SWIVEL CASTER | 4" | 2 | 1 | 1 | 1 |
| 15K | PDCPF15110-15K | SWIVEL CASTER W/BRAKES | 4" | 2 | | | |
| 31H | PDCPF15110-31H | HEX BOLT | 1/4"x3/4" | 6 | 1 | 1 | 1 |
| 31I | PDCPF15110-31I | FLAT WASHER | 1/4" | 6 | | | |
| 10B | PDCPF15110-10B | HEX BOLT | 5/16" x 3/4" | 6 | 1 | 1 | 1 |
| 10K | PDCPF15110-10K | HEX BOLT | 5/16" x 3/4" | 12 | | | |

LAGUNA

| | | | | | | | | | |
|-----|----------------|--------------------------|--------------|----|---|---|---|--|--|
| 15E | PDCPF15110-15E | HEX BOLT | 5/16" x 3/4" | 16 | | | | | Triangular Support panel(4) Part#: PDCPF15110H-LB |
| 15F | PDCPF15110-15F | HEX BOLT | 5/16" x 3/4" | 4 | | | | | |
| 10C | PDCPF15110-10C | FLAT WASHER | 5/16" | 6 | | | | | |
| 10L | PDCPF15110-10L | FLAT WASHER | 5/16" | 12 | | | | | |
| 15D | PDCPF15110-15D | FLAT WASHER | 5/16" | 16 | | | | | |
| 15G | PDCPF15110-15G | FLAT WASHER | 5/16" | 4 | | | | | |
| 28 | PDCPF15110-28 | RUBBER CAP 4" FOR INTAKE | 4" | 1 | | | | | INTAKE SPLITTER Part#: PDCPF15110H-I |
| 27A | PDCPF15110-27A | SHETT METAL BOLT | M4 x 12mm | 3 | 1 | 1 | 1 | | |
| 19A | PDCPF15110-19A | HEX BOLT | 5/16" x 3/4" | 6 | | | | | DRUM LID Part#: PDCPF15110H-L |
| 19B | PDCPF15110-19B | FLAT WASHER | 5/16" | 12 | 1 | 1 | 1 | | |
| 19C | PDCPF15110-19C | HEX NUT | 5/16" | 6 | | | | | |
| 18B | PDCPF15110-18B | FOAM TAPE | 3 x 6mm x 1M | 1 | | | | | |
| 51A | PDCPF15110-51A | PHILIP HD BOLT | M4x10mm | 6 | | | | | LED LIGHT KIT Part#: PDCPF123H-LK |
| 51B | PDCPF15110-51B | FLAT WASHER | 3/16" | 6 | 1 | 1 | 1 | | |
| 51C | PDCPF15110-51C | HEX NUT | M4 | 6 | | | | | |
| | | RING WRENCH | 13 BY 10 | 1 | | | | | FOR ASSEMBLY Part#: PDCPF123H-W |
| | | OPEN END WRENCH | 14 BY 12 | 2 | 1 | 1 | 1 | | |



SPECIFICATIONS: PFLUX1

| | |
|------------------------------|--|
| Motor Specs: | 1.5 HP |
| Electrical Specs: | 110V/220V / 60Hz / 1PH / 3450 RPM |
| Running AMP | (6" inlet) 18.8A at 110V; 9.4A at 220V |
| Air Volume: | 900CFM (cubic feet per minute) |
| Max. static pressure | 10.1 Inches of water |
| Fan size | 13" |
| Inlet: | One 6" or two 4" ports |
| Switch | High frequency remote control switch |
| Collection capacity | 25 gallon Octagon drum |
| Packing Size: (L x W x H) | 45" x 28.3" x 47" (114.5 x 72 x 119.5 cm) |
| Machine weight | 232 lbs. (105 kgs) |
| Shipping weight | 287 lbs. (130 kgs) |

| | |
|---------------------|--|
| <u>Filter Media</u> | Filtering area: 48.4 sq./ft. (4.5 m ²) |
| Cartridge Filter | HEPA 15.74" x 19.68" (40 x 50cm) x 1pc |

SUPPLIES:

Canister collection bag, 5 per pack.....SKU/Part # PDCCF-FB22
Drum collection bag, 5 per pack.....SKU/Part # ADBAG22CP123X5



WARRANTY & REGISTRATION

Thank You!

Welcome to the Laguna Tools® group of discriminating machinery owners. We understand that you have a choice of where to purchase your machines and appreciate the confidence you have in the Laguna Tools® brand.

Through hands-on experience, Laguna Tools® is constantly working hard to make innovative, precision products. Products that inspire you to create works of art are a joy to operate and encourage your best work.

Laguna Tools®
Imagination, Innovation, and Invention at Work

Warranty & Registration

Every product sold is warranted to be free of manufacturer's defective workmanship, parts, and materials. For any questions about this produce, the intended use or what it was designed for, customer service, or replacement parts, please contact our customer service department:

Laguna Tools® Customer Service
744 Refuge Way, Grand Prairie, Texas 75050, USA
1-800-234-1976
customerservice@lagunatools.com
www.lagunatools.com/why/customer-service/
8AM. To 5PM PSF. Monday through Friday

For warranty claims or to report damage upon receiving-please reach out to our warranty department:

Laguna Tools® Warranty Service
744 Refuge Way, Grand Prairie, Texas 75050, USA
1-800-234-1976
customerservice@lagunatools.com
www.lagunatools.com/policies/warranty
8AM to 5PM PST, Monday through Friday

Registration

To prevent voiding this warranty, all products sold must be registered within thirty (30) days of receiving the product. Registering the product will enable the original purchaser to receive notifications about important product changes, receive customer service, and be able to file a warranty claim against defective workmanship, parts, or materials.



Who is Covered

The applicable warranty covers only the initial purchaser of the product from the date of receiving the product. To file such claims, the original purchaser must present the original receipt as proof of purchase.

What is Covered

The warranty covers any defects in the workmanship of all parts and materials that make up the machine unless otherwise specified. Any part determined by Laguna Tools® to have a defect will be repaired or replaced (and shipped), without charge. The defective item/part must be returned to Laguna Tools® with the complaint and proof of purchase in the original packaging that it was received in. In the event the item/part is determined to be not covered by this warranty, the customer will be responsible for the cost to replace the item/part and all related shipping charges

Warranty Limitations

This limited warranty does not apply to natural disasters, acts of terrorism, normal wear and tear, product failure due to lack of maintenance or cleaning, damage caused by accident, neglect, or lack-of inadequate dust collection. The warranty may be voided against proof of misuse/abuse, damage caused where repair or alterations have been made or attempted by others, using the product for purposes other than those described as intended use (unless with consent by Laguna Tools®), modification to the product, or use with an accessory that was not designed for the product. It is the responsibility of the user to understand basic machinery settings and procedures and to properly maintain the equipment in accordance with the standards provided in this manual.

Length of Warranty

All new machines and optional accessories sold through an authorized dealer carry a two-year warranty effective from the date of receiving the product. Machines sold for either commercial or industrial use have a one-year warranty. Wearable parts like throat plates, bandsaw guides, etc., have a ninety-day warranty.

Table A-1 Warranty Lengths

| |
|---|
| 2 Year – New Machines Sold Through an Authorized Dealer |
| 2 Year – Accessories Sold as Machine Options (excluding blades) |
| 1 Year – Machines Sold for Commercial or Industrial Use |
| 1 Year – Blades and Accessories outside or Machine Options |
| 90 Days – Wearable Parts |

Aside from being free of defects upon receiving, consumable parts, like cutters and abrasives, are not covered by this warranty unless otherwise stated by Laguna Tools®. These parts are designed to be used at the expense of the operator and are available for replacement or inventory purchase. The determination of a consumable part will be made on a case-by-case basis by Laguna Tools®.

Shipping Damage

Laguna Tools® is not responsible for damage or loss caused by a freight company or other circumstances not in the direct control of Laguna Tools®. All shipping-related claims for loss or damage to goods must be made to Laguna Tools® within twenty-four hours of delivery.

How to Receive Support

To file a warranty-claim please contact the warranty department at 1-800-234-1976. To receive customer service or technical support please contact the customer service or technical support please contact the customer service department at 1-800-332-4049. Parts, under warranty, are shipped at the expense of Laguna Tools® either by common carrier, FedEx ground services or similar method. Technical support to install replacement parts is primarily provided by phone, fax, email, or the Laguna Tools® Customer Service Support Website.



© 05/2023 Laguna Tools, Inc.



800-234-1976
www.lagunatools.com

LAGUNA

LAGUNA AMERICAN HEADQUARTERS

Texas: 744 Refuge Way Suite 200, Grand Prairie, Texas 75050, U.S.A. Phone: +1-800-332-4094
Huntington Beach: 7291 Heil Ave Huntington Beach, CA 92647, U.S.A. Phone: +1-949-474-1200
South Carolina: 825 Bistline Dr. Ste 101, West Columbia, SC 29172, U.S.A. Phone: +1-800-234-1976
Minnesota: 5250 West 74th St, Edina, MN 55439, U.S.A. Phone: +1-949-474-1200

DAKE CORPORATION

724 Robbins Road, Grand Haven, MI 49417, United States +1-800-937-3253

LAGUNA EUROPE

Walker Rd, Bardon Hill, Coalville LE67 1TU, United Kingdom. Phone: +44-1530-516921

© Laguna Tools

112123