

Fiber Marker/OM Laser:
Metal Engraving – Metal Etching
Owner's Manual-

- ***Introduction***
- ***Delivery Parameters (Damage Notification)***
- ***Basic Operations***
- ***Installation***
- ***Safety***
- ***Maintenance***
- ***Warranty-Coverage, Return Policy***

Features:

- 20,30 and 50W Options.
- 110 x 110mm Lens.
- Laser Wavelength: 1064nm.
- Up to 10,000mm/s Marking Speed.
- Resolution: 0.001mm.
- Repositioning Precision: 0.003mm.
- Air Cooling System.



Explore The Fiber Marker | OM



Table of Contents-

- Introduction of Machine-
- Delivery Parameters-
- Basic Operation-
- Installation Requirements-
- Precautions of Machine Use-
- Maintenance-
- Safety-
- Warranty-



Introduction of the *Fiber Marker/OM Laser-*

- **Summarization-**

Optical fiber laser marking machine is a kind of professional laser marking equipment which integrated light, machine, electricity, independent research and development and production, The key components are imported.

Our machine with advantage of novel style, unique structure, convenient operation, high frequency modulation, high marking speed and precision, stable performance, widely used in all kinds of metallic and nonmetallic surface for permanent marker.

Laguna Fiber Marker OM Laser marking machines are a new generation laser marking system made with the newest laser technology, designed for permanently marking and engraving metal as well as industrial polymers.

- **Main Specifications-**

Laser Wavelength: 1064nm.

Laser Source: Raycus Q-Switch / JPT MOPA.

Modulation frequency: 20KHz-80KHz.

Scanning Speed: ≤ 10000 mm/s.

Repeatability Precision: 0.004mm.

Engraving Range: 110x110mm/150x150mm/175x175mm/200x200mm/300x300mm.

Marking Depth: 0.01- 0.2 mm (Depending on the Material).

Marking Line Width: 0.01-0.2 mm (Depending on the Material).

Power Supply: AC110V/220V $\pm 10\%$, 50/60 Hz.

Safety: over current protection, over-temperature protection, over-voltage protection.

Resolution: .001mm

Repositioning Precision

Repositioning Precision : 0.003mm



Introduction of the **Fiber Marker/OM Laser (Cont'd.)-**

- Other Specifications (Optical Output)-

Marking Range-

- F = 160mm
- Range: 110 x 110mm (with standard)
- Voltage: 0.5KW, AC: 220V
- Cycle per Second: 50Hz
- Minimum Line Width= 0.01mm

Marking Range-

- 150mm x 150mm
- 200mm x 200mm
- 220mm x 220mm
- 300mm x 300mm
- Minimum Height of Characters= 0.2mm

Cooling Systems-

- Air-Cooled.

Environmental Requirements

- 0 ~ 35 °C (Celsius) or 0 ~ 95 F (Fahrenheit), 90% Humidity.



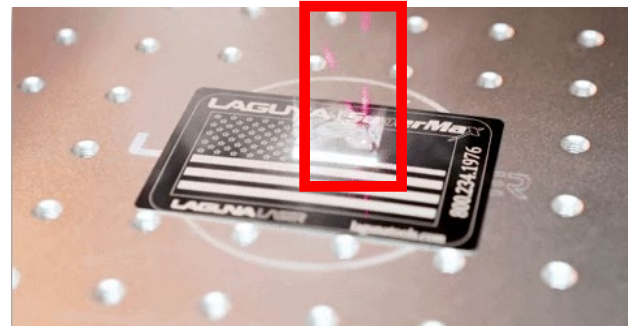


Explore The Fiber Marker 1004

Introduction of the **Fiber Marker/OM Laser (Cont'd.)-**

- Special Features-
Excellent Beam Quality-

The OM Fiber Marker achieves superb beam quality by minimizing the condensation diameter to less than 20um. And with a divergence angle that is 1/4 of the semiconductor pumping source laser, the OM achieves consistent precision. This exceptional accuracy can be run at a marking speed of up to 10,000mm/s.



- Low-Use Cost & Maintenance Free-

Because the Fiber OM has a high turnover ratio between electricity and laser usage, you'll save on your usage and power bill. Up to the machine's lifetime of 100,000 hours, the OM will keep your run costs as low. As well as having a minimal operating cost, the OM laser lens is completely maintenance free.



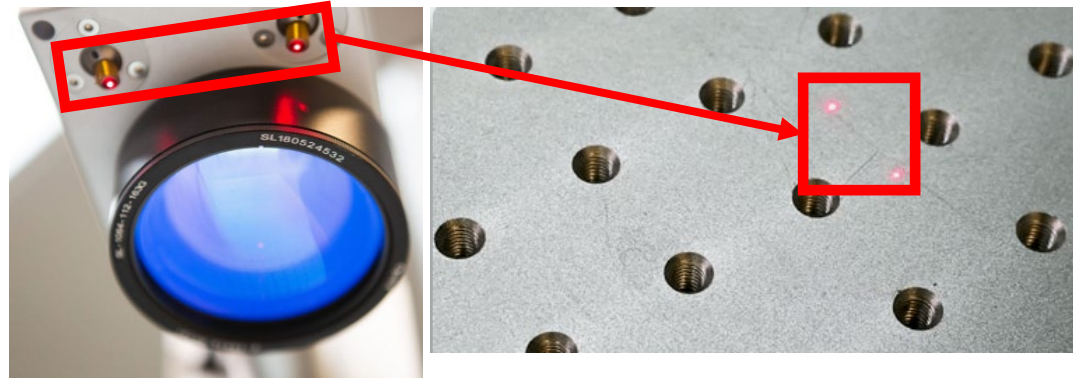


Introduction of the **Fiber Marker/OM Laser (Cont'd.)-**

- Special Features (Cont'd.)-

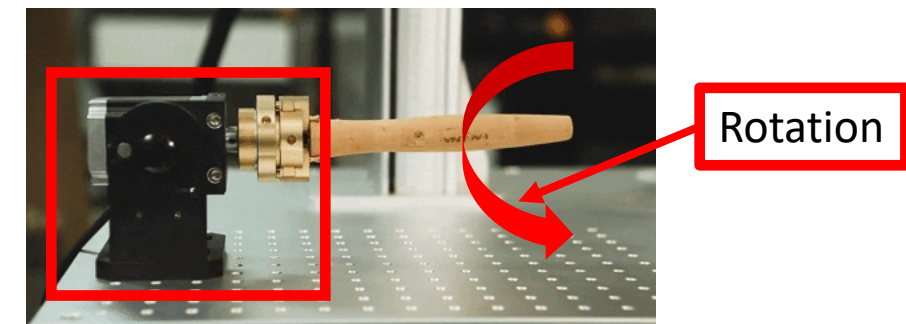
Dual-Laser Focusing System-

To ensure the best possible outcome, the OM comes with a focusing system. You can manually adjust either before or during the operation to fine tune your project to your liking.



Rotary Worktable Optional-

With an installation of a rotary table for multiple axis, you'll be able to work on cambered surfaces.





Introduction of the *Fiber Marker/OM Laser (Cont'd.)-*

- **Special Features (Cont'd.)-**

Applicable Materials (Samples)-

- Gold
- Silver
- Diamonds
- Steel
- Copper
- Iron
- Aluminum
- Plastic
- PVC/PVC Pipe-Polyvinyl Chloride
- Ceramics
- PCB-Printed Circuit Board
- Bamboo
- Marble
- Almost all Metal & Non-Metal Materials.



Delivery Parameters-

1. When the Crate containing your newly purchased Fiber Marker Laser Machine is delivered, it will be delivered “Curbside”, in other words the Machine will be delivered in front of the Driveway of ones Garage/Shop or Workspace.
(***It is the Purchasers responsibility of moving the Machine into His or Hers Garage/Shop or Workspace.***)
2. When moving the Crate one can use a “Floor Jack” (See Picture Below), one can rent a “Floor Jack” from any Hardware Store/Equipment Rental Facility or utilize several people to move the Crate into your Garage/Shop or Workspace.

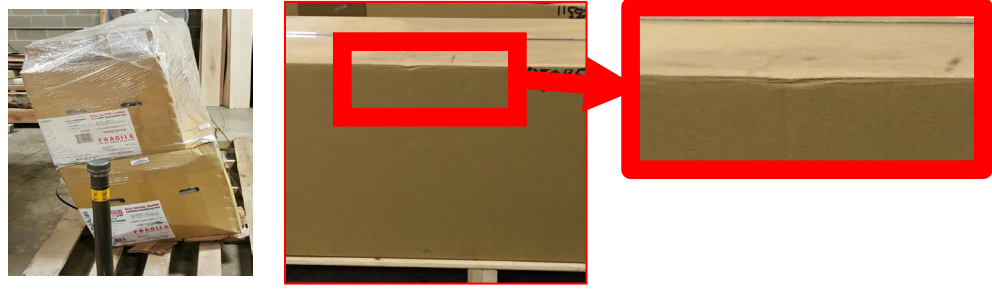




Explore The Fiber Market 10M

Delivery Parameters- Damage Notification:

3.) If one finds any shipping damage to the Crate (See Example Pictures Below.), report the damage to the Trucking Company, Note the Damage on the Bill of Lading & attach back on to the Crate. If possible, take Photos of the Damage and send to Laguna Tools Customer Service.



4.) If YOU OPENED THE CRATE and found shipping damage to Machine, **Note that on the Bill of Lading as well with any photos.**

5.) **NOTIFY LAGUNA TOOLS WITHIN 24 HOURS AFTER RECEIVING CRATE WITH SHIPPING or any other type of DAMAGE.** We ask customers to notify us within 24 hours of any damage sustained to the packaging and or products. Customers can contact us at **CNC@lagunatools.com or call 800-234-1976.**



Explore The Fiber Marker 10M

Delivery Parameters- Unboxing:

1. Acquire some standard tools for taking apart the Crate.

a.) Hammer.



b.) Pry Bar.



c.) Wire Cutter:



d.) Cordless Drill.





Explore The Fiber Marker 10M

Delivery Parameters- Unboxing (Cont'd.):

2. Cut all straps only on the Crate.



3. Unscrew a series of Screws at the Base of Crate using a Cordless Drill.

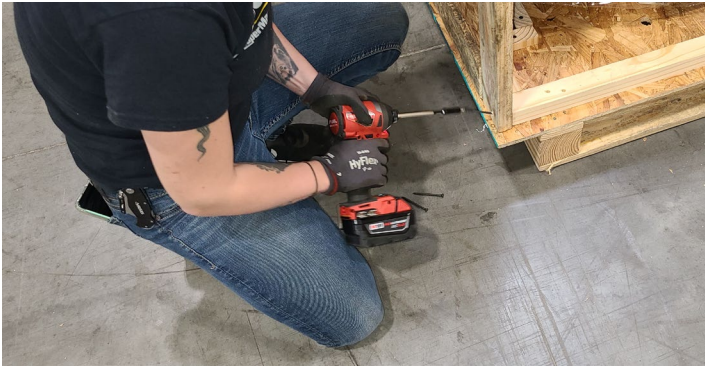




Explore The Fiber Marker 104

Delivery Parameters- Unboxing (Cont'd.):

4. Unscrew and remove Side Panels of Crate.





Basic Operations-

Marking Principle-

- *Through the laser light energy evaporate the material in the surface and show deep material;
- *Through the laser light energy cause the surface substance chemical physical change and "engrave" the needed text pattern;
- *Through the laser light energy burned part of the material, then show the design, text of etching.

Structure Description-

Optical Fiber Laser “OM” Marking Machine mainly made up of the Following:

- 1.) Control Cabinet.
- 2.) Control Panel.
- 3.) Optical Fiber Laser.
- 4.) Marking Head.
- 5.) Working Table.
- 6.) Computer.



Left Side View



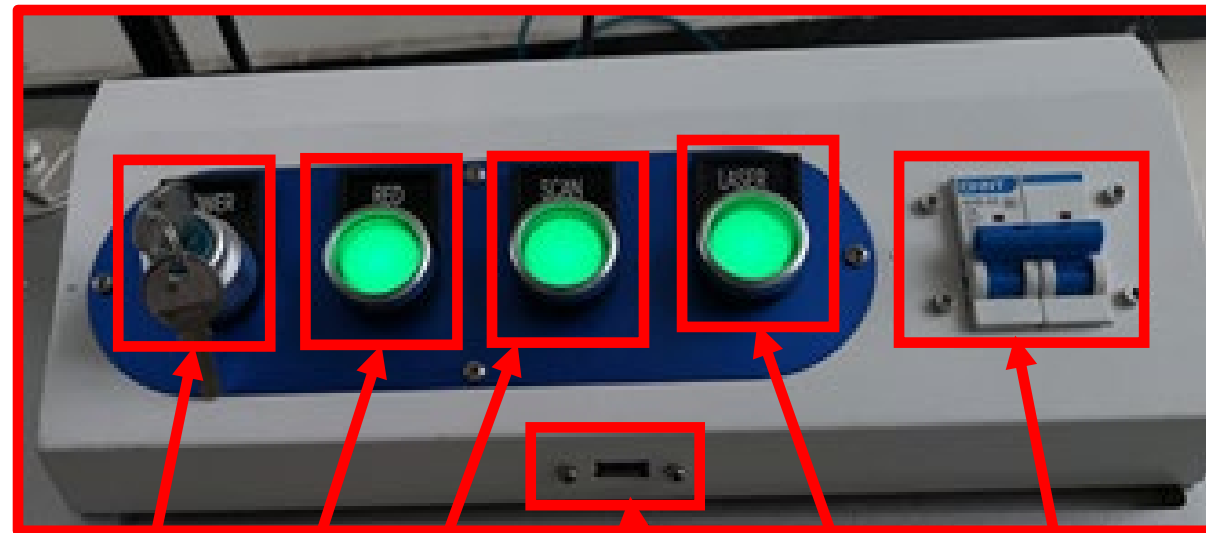
Front View



Basic Operations (Cont'd.)-

Structure Description-

Optical fiber laser marking machine mainly made up of the Following:



Power- (Key)
On & Off
Switch

RED

SCAN

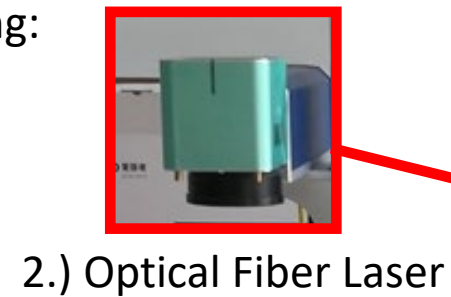
USB Port
Line

LASER

BREAKER
SWITCH

Powering Fiber Marker OM Laser Process-

- Turn "On" Computer.
- Key On & Off Switch.
- Press "RED" Button.
- Press "SCAN" Button.
- Press "LASER" Button.
- Open "EZCAD" Software.



2.) Optical Fiber Laser



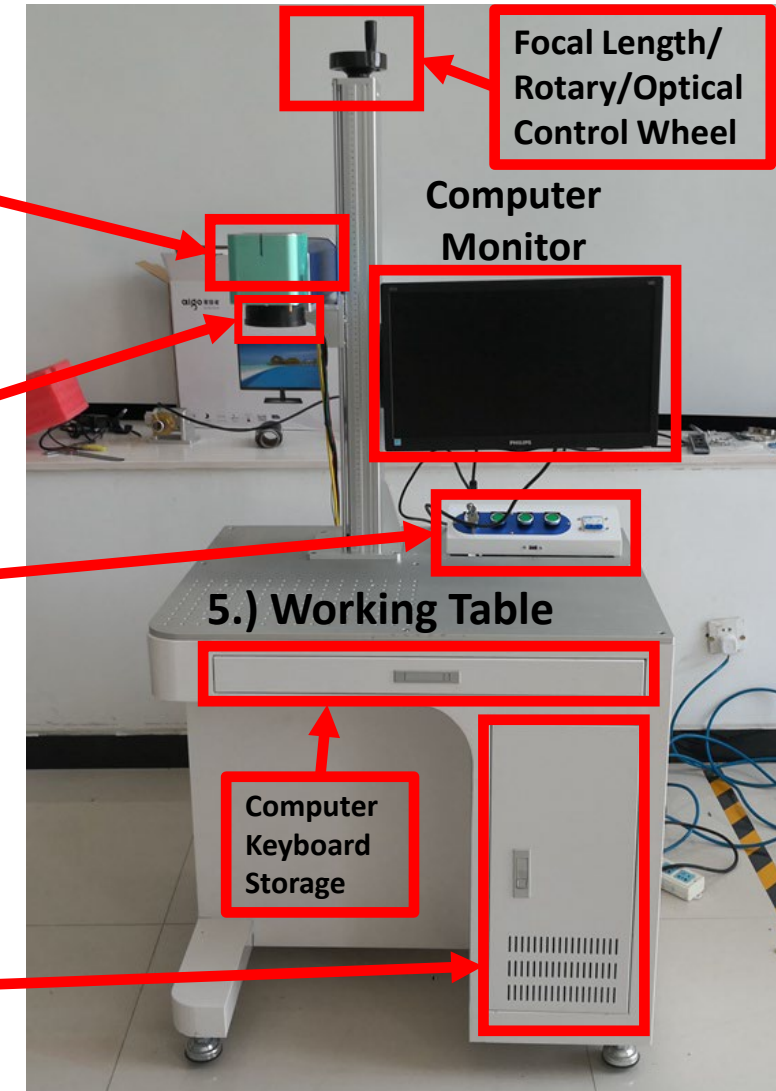
4.) Marking Head.



3.) Control Panel



1.) Control Cabinet-
Holds Computer.



Focal Length/
Rotary/Optical
Control Wheel

Computer
Monitor

5.) Working Table

Computer
Keyboard
Storage



Basic Operations (Cont'd.)-

Structure Description-

Optical fiber laser marking machine mainly made up of the Following:



Open Back Panel of the Control System.



Fiber Laser (Raycus) System



Optical Fiber Laser "OM" Marking Machine



Installation Requirements & more operating instructions-

Equipment installation requirements-

The Laser Marking Machine, if possible, should be used in the clean & dry environment, with operating temperatures between 10 Degrees Celsius - 35 Degrees Celsius (50 Degrees Fahrenheit- 95 Degrees Fahrenheit), and keep the Optics Device clean & dry.

To have the Machine operate to its expectations & specifications, Laguna Tools suggests to have the machine be placed in a separate closed workshop or room to assure constant suggested operating temperatures controlled by a proper HVAC System. For accurate & proper operation, the Machine should be placed on a **leveled** lacquered, cement or ceramic tiled floor.

For this Machine, our customers are required to provide access to at least 1500W power single-phase AC power supply source, the main power cord of our equipment should be installed in an **Air Switch** to provide protection, **it is strictly prohibited to use triangle plugs.**

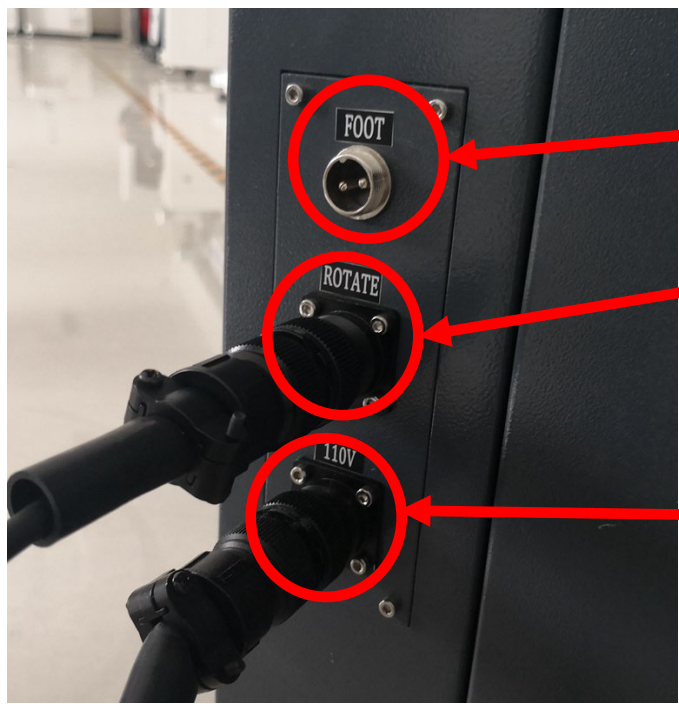


The customer must provide a **ground condition** for the main power supply, it is strictly prohibited for a virtual connection!



Installation Requirements & more operating instructions-

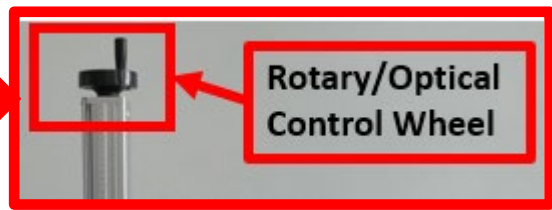
The wiring diagram of outside Machine-



Plug for a Foot Switch/Control, if available.

Rotary Controller

Plug to Power Machine (110V).



Rotary/Optical Control Wheel

USB Port/line-



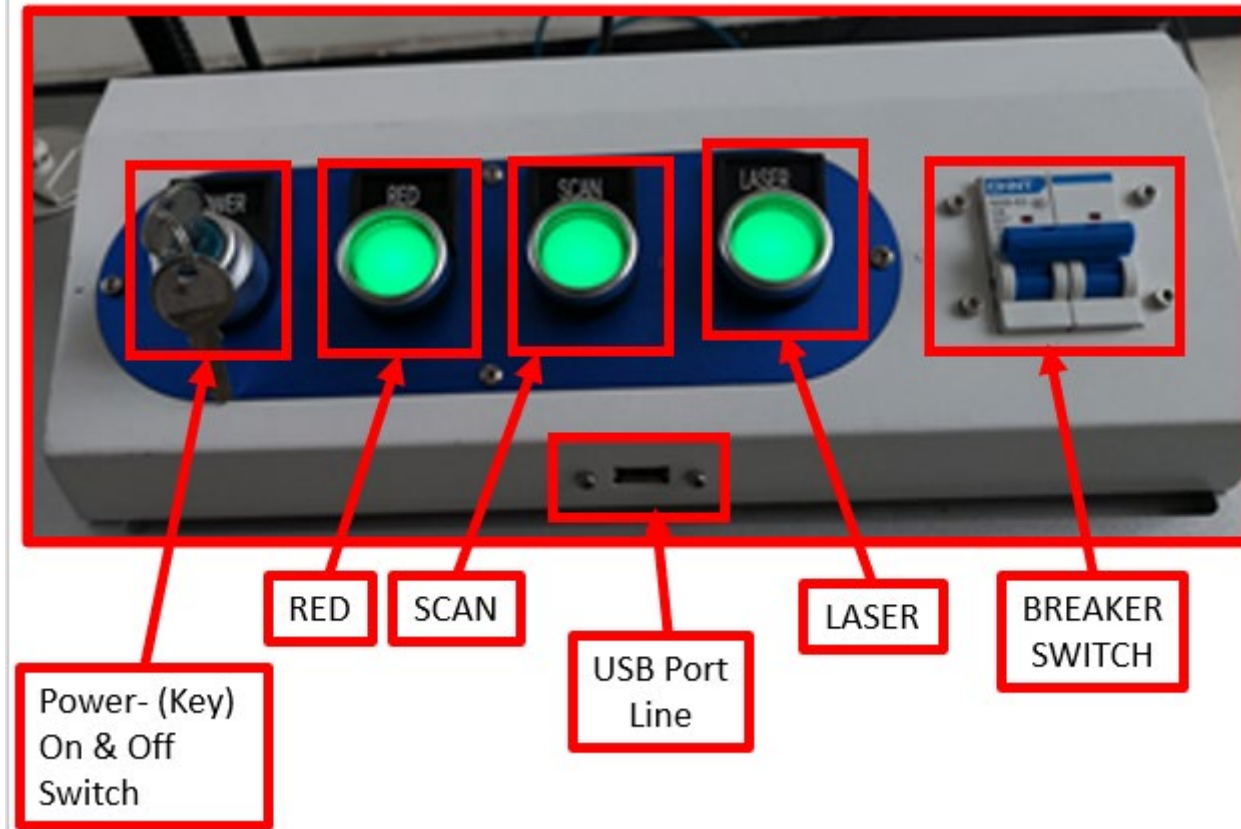
Connect the USB line to the control cabinet, then to the computer system.

USB Port/Line



Installation Requirements & more operating instructions (Cont'd.)-

Operation Process Instructions- Control Panel Start –Up Order.



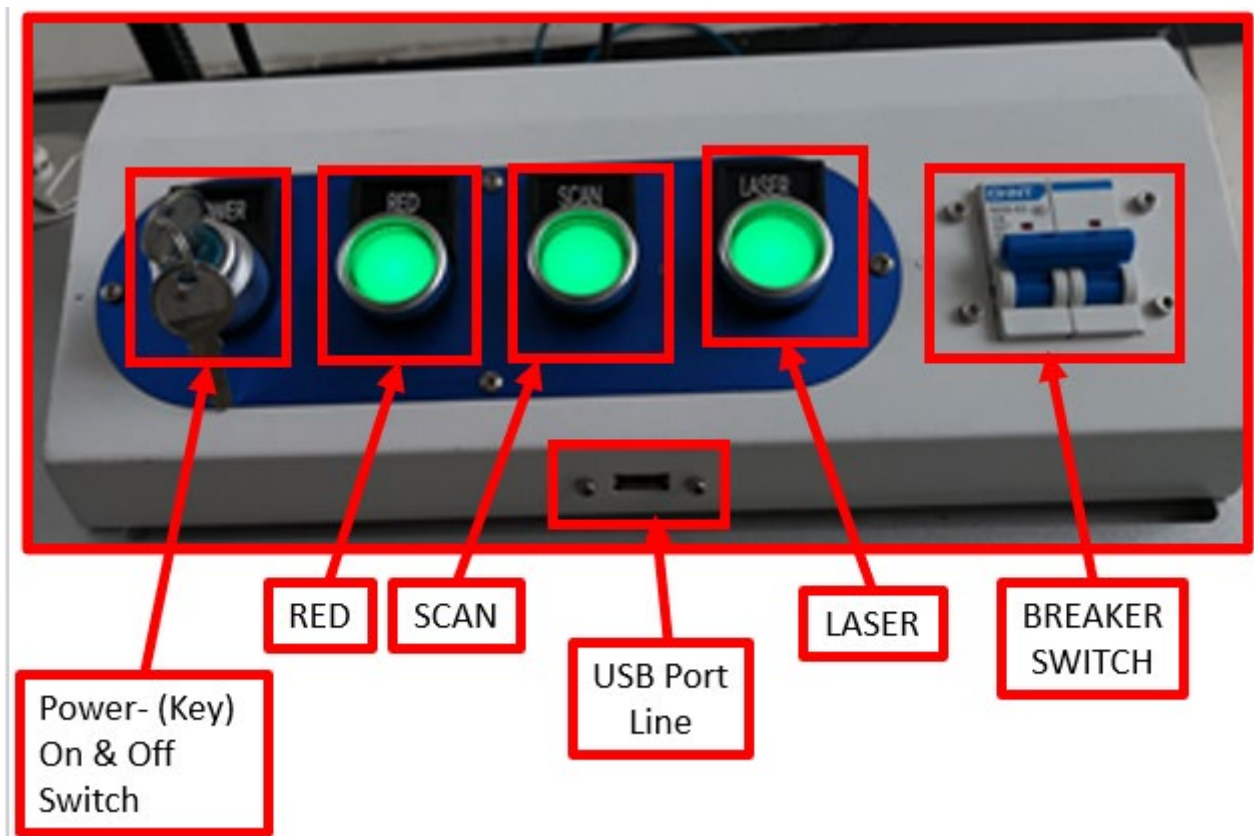
Powering Fiber Marker OM Laser Process-

- a) Turn “On” Computer.
- b) Key On & Off Switch.
- c) Press “**RED**” Button-”**RED**” Switch..
- d) Press “**SCAN**” Button-Scanner Switch.
- e) Press “**LASER**” Button-Laser Switch.
- f) Open “**EZCAD**” Software.
- g) Adjust the Focal length for marking.



Installation Requirements & more operating instructions (Cont'd.)-

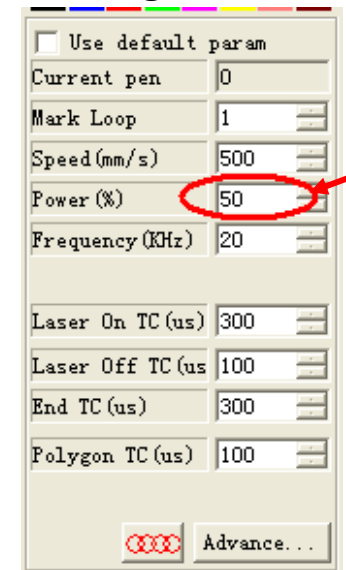
Operation Process Instructions- Control Panel Start –Up Order.



Note:

- a) Turn "On" Computer.
- b) Key On & Off Switch (Turnkey to "On" Position.)
- c) Press "RED" Button-"RED" Switch.
- d) Press "SCAN" Button-Scanner Switch.
- e) Press "LASER" Button-Laser Switch.

According ones needs, **adjust the power to 50%.**

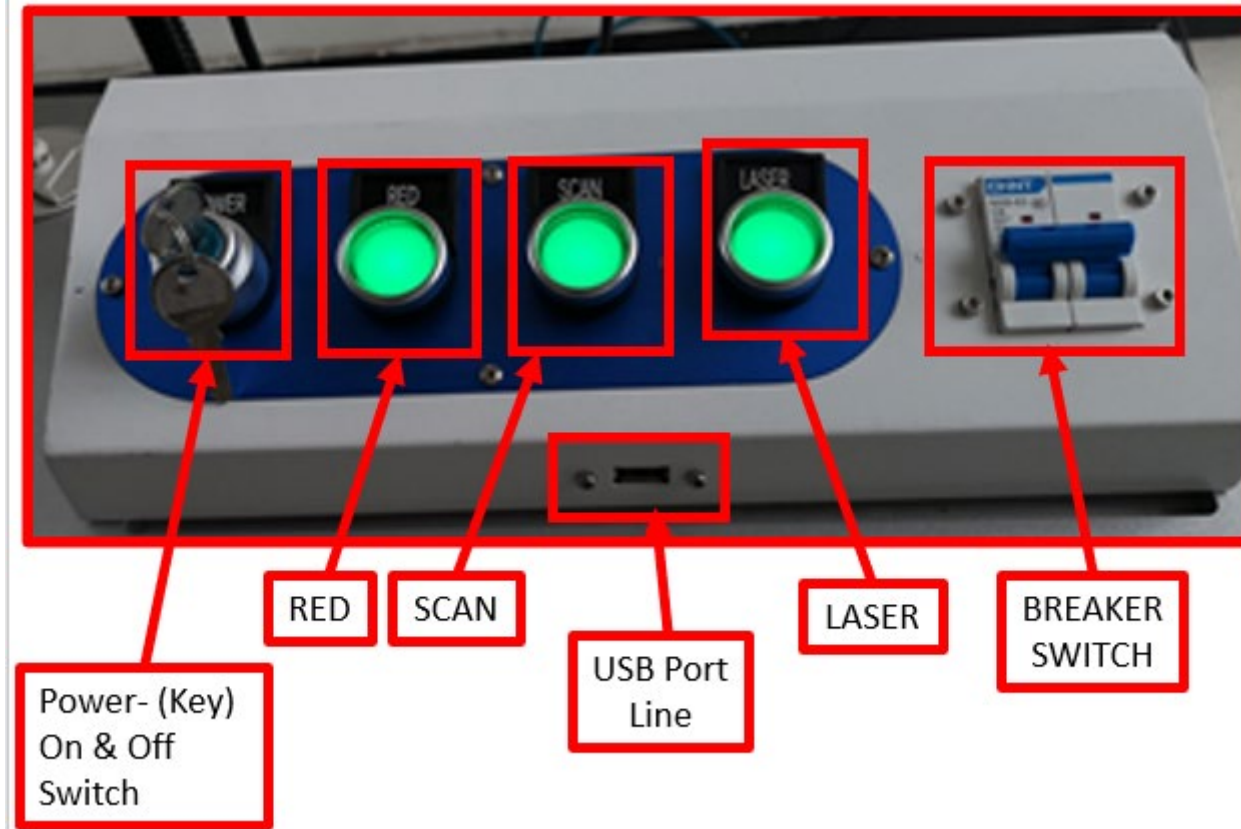


Do not use full power work for a prolonged time! 20



Installation Requirements & more operating instructions (Cont'd.)-

Operation Process Instructions- Control Panel.

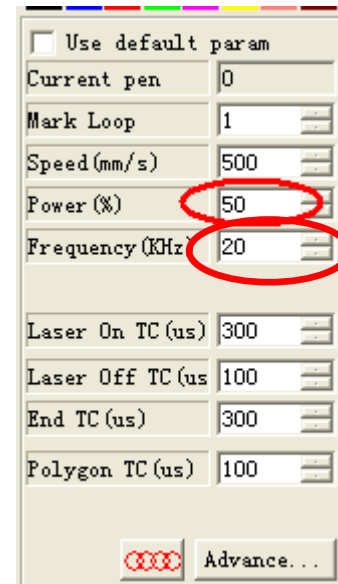


Solution 1: Rotate this up or down to adjust focal length.

Note:

- a) Turn "On" Computer.
- b) Key On & Off Switch (Turnkey to "On" Position.)
- c) Press "RED" Button-"RED" Switch.
- d) Press "SCAN" Button-Scanner Switch.
- e) Press "LASER" Button-Laser Switch.

***Frequency Adjustment Range 20 KHZ-80 KHZ, generally considering to 20 KHZ.



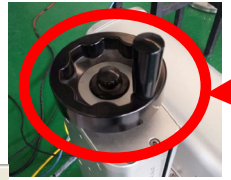
f.) Adjust the Focal Length for Marking.



Installation Requirements & more operating instructions (Cont'd.)-

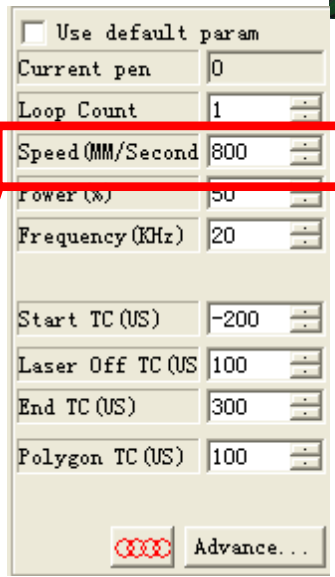
Solution 1: Rotate this up or down to **“Adjust Focal Length”**.

***How to Focus Length of the Laser-**

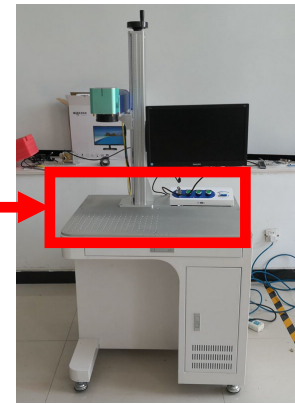


**Focal Length/
Rotary/Optical
Control Wheel**

1.) Set “Output Power: 50W or 60W”, Speed “1000mm/sec”.



2.) Place ones Steel Plate or acceptable Workpiece on Worktable.





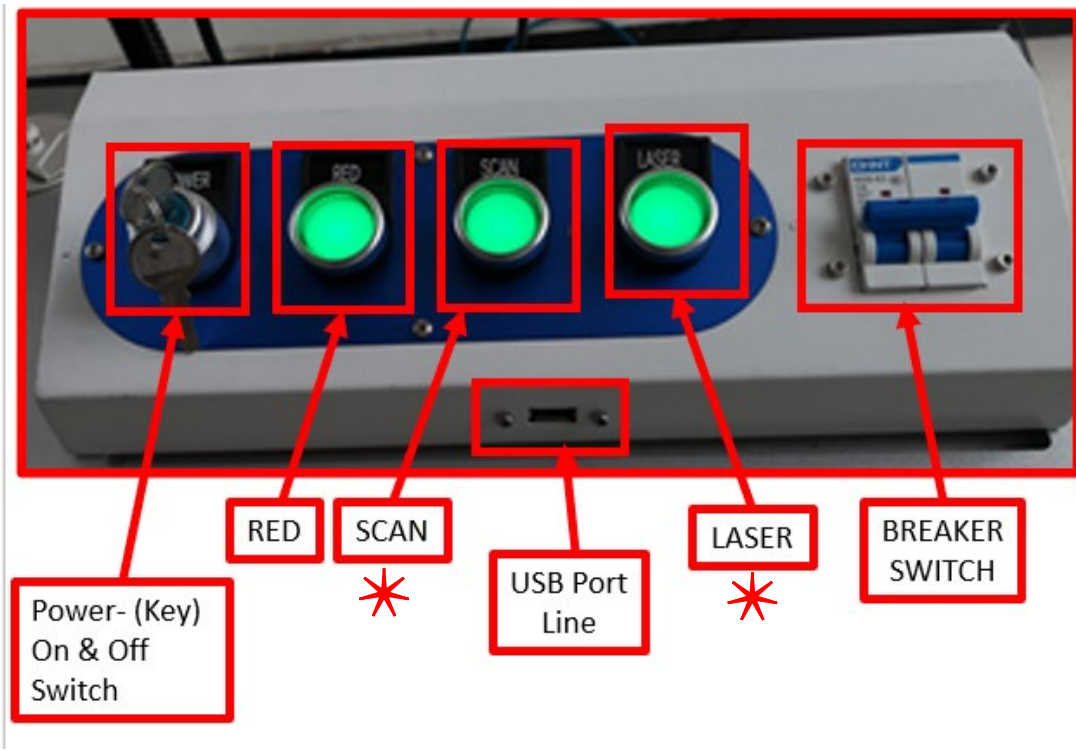
Installation Requirements & more operating instructions (Cont'd.)-

***How to Focus Length of the Laser-**

3.) Open “**Laser Power**” and “**Scanner Power**”, place acceptable Workpiece in proper position.

Powering Fiber Marker OM Laser Process-

- a) Turn “On” Computer.
- b) Key On & Off Switch.
- c) Press “RED” Button.
- d) Press “SCAN” Button.***
- e) Press “LASER” Button.***
- f) Open “EZCAD” Software.





Installation Requirements & more operating instructions (Cont'd.)-

4.) When “EZCAD Software is opened, choose ”**Continue**” and ”**Mark Sel**”, then **Press the F2 Key** on the Computer Keyboard, or the Computer Screen, meanwhile rotating handle.

The image shows the EZCAD software interface with several key elements highlighted by red boxes and arrows:

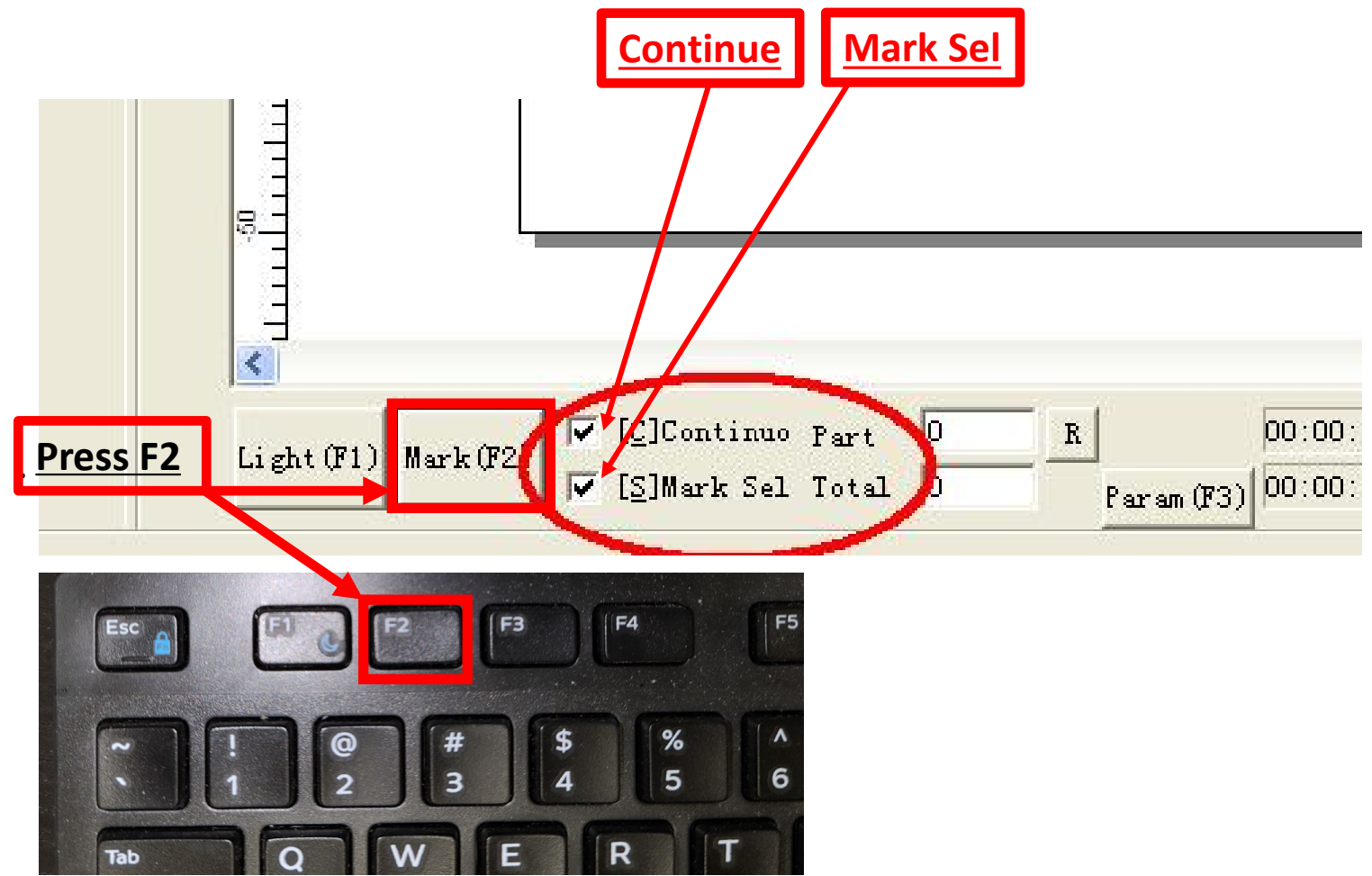
- Continue** and **Mark Sel** buttons in the top right control panel.
- Mark (F2)** button in the bottom left control panel.
- Press F2** text box with an arrow pointing to the F2 key on the keyboard.
- F2** key on the computer keyboard.

The main workspace displays a grid with the word "Laguna" and various toolbars and property windows.



Installation Requirements & more operating instructions (Cont'd.)-

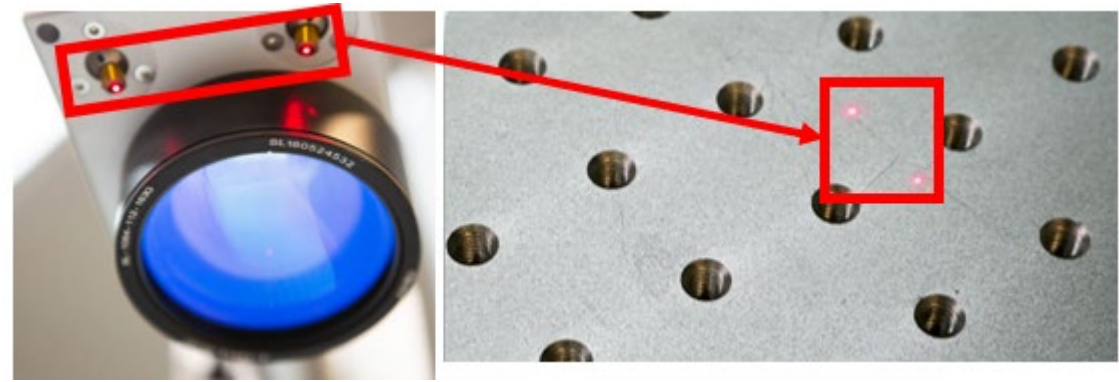
4.) When “EZCAD Software is opened, choose ”**Continue**” and ”**Mark Sel**”, then **Press the F2 Key** on the Computer Keyboard, or the Computer Screen, meanwhile rotating handle.





Installation Requirements & more operating instructions (Cont'd.)-

Solution 2: Accept two red light scan head, move the laser head up and down, when 2 dots come together that is when the light beam is the most strongest.




To establish the proper "Focal Point". One can attempt to change the distance (up and down), one will see different marking results.


That doesn't mean one will get best result when you use best focal length. It depends on one's material and the result one attempts for.



Installation Requirements & more operating instructions (Cont'd.)-

E.g., One will want to make black mark on Stainless Steel, one will need to adjust the distance above best focal length 2-5mm, set speed at "100mm/s" power at "80%-85%", you can have a try.

<input type="checkbox"/> Use default param	
Current pen	0
Loop Count	1
Speed (MM/Second)	100
Power (%)	50
Frequency (KHz)	20
Start TC (US)	-200
Laser Off TC (US)	100
End TC (US)	300
Polygon TC (US)	100
	Advance...

<input type="checkbox"/> Use default param	
Current pen	0
Loop Count	1
Speed (MM/Second)	800
Power (%)	80
Frequency (KHz)	20
Start TC (US)	-200
Laser Off TC (US)	100
End TC (US)	300
Polygon TC (US)	100
	Advance...



Installation Requirements & more operating instructions (Cont'd.)-

110*110mm, focal length: 212mm(from the material surface to the bottom of the galvo head edge).

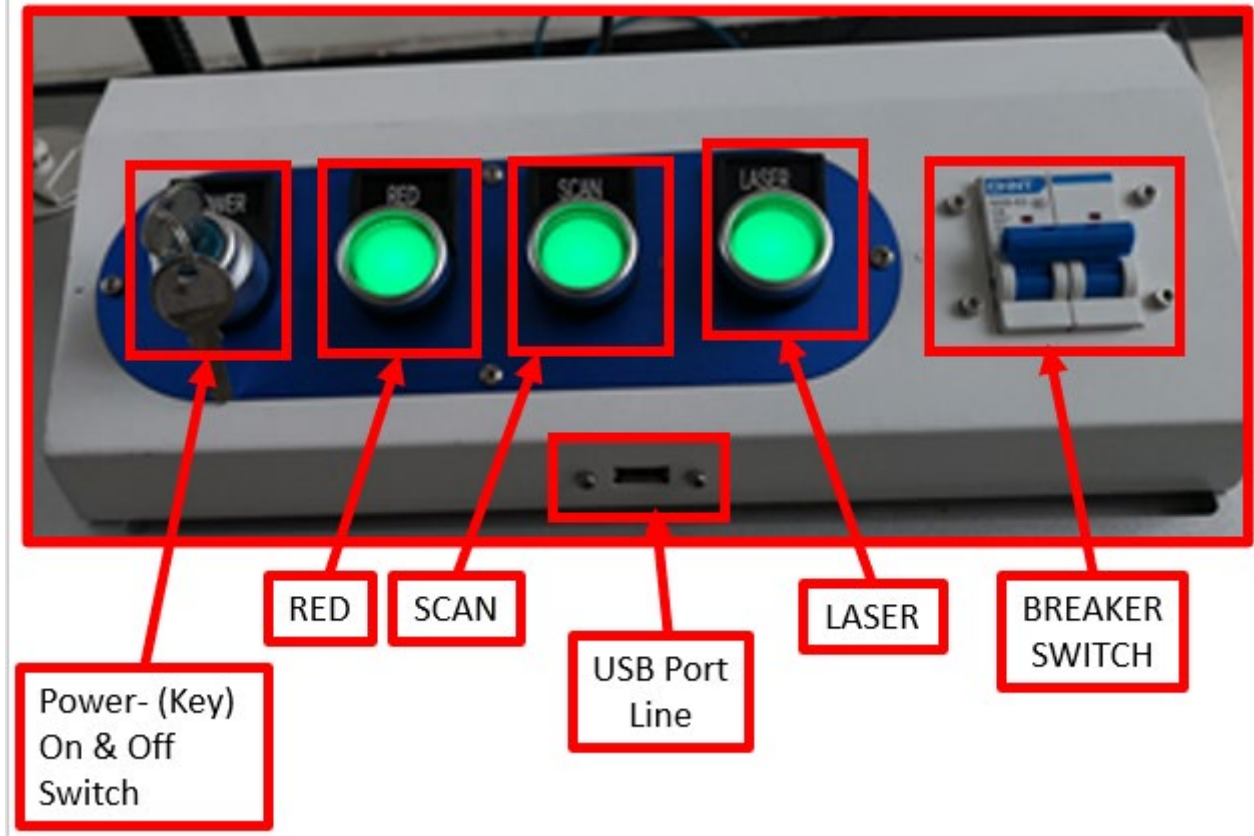


212 mm from
Material Surface
to bottom of
Galvo Head Edge.



Installation Requirements & more operating instructions (Cont'd.)-

Operation Process Instructions-Equipment Shutdown Order:



Shutdown Order- Fiber Marker OM Laser Process-

- a) Close or Turn "Off"- "**EZCAD**" Software.
- b) Close or Turn "Off" "**LASER**" -Laser Switch.
- c) Close or Turn "Off" "**SCAN**"-Scanner Switch.
- d) Close or Turn "Off"- "**RED**" Button-Red Switch.
- e) Turnkey Power to "Off" Position.
- f) Shutdown Computer.



Precautions of Machine Use-

Daily Operation-

- 1.) Avoid eye direct contact with laser light.***Must wear approved Fiber Marker Laser Safety Glasses for Laser Operation***.
- 2.) Use laser in a controlled range. Add warnings signs to Machine, if necessary.
- 3.) Do not use Fiber Marker OM without permission. Machine can only be operated by a trained/certified individual.
- 4.) After Machine is powered up, make sure the Cooling Fan is functioning.
- 5.) Use approved alcohol swabs to wipe laser lens clean, after wiping please wait the alcohol completely dried before installation.
- 6.) It is strictly prohibited to place any items around the equipment that are flammable or combustible, laser reflection could cause burns on the human body or causes fire to flammable/combustible materials.
- 7.) In working process, someone must wait on duty, especially high-power cut or carving organic ingredients higher material, in order to avoid the eruption or fire. Do not operate without training, or operate, thus Laguna Tools is nor responsible for any damage.



Explore The Fiber Marker 1004

Precautions of Machine Use (Cont'd.)-

Daily Operation-

- 8.) Because this kind of laser is invisible light, pay attention to safety when working with machine, the equipment are strictly prohibited to be placed near inflammable, explosive items, in case of the laser is deviated to cause fires.
- 10.) When the machine working or debugging light path, please be sure to pay attention and not to let any part of the body into the transfer area of light path, to avoid injury. Wear approved protective glasses when adjust the light path, and adjust to a smaller current, in order to avoid of laser deviation of fires.
- 11.) The power supply voltage: voltage fluctuations will lead to equipment becoming unstable, high voltage power supply can cause permanent damage to the device. To avoid the damage of equipment and electric circuit cause by voltage fluctuation, and to ensure the stability of the machine we suggest users to install a voltage stabilizer/regulator with at least a 5000W capacity.
- 12.) Please cut off the power supply immediately if the machine starts to operate incorrectly or if the machine overheats to a point the machine catches fire.
- 13.) When relative humidity of environment more than 80%, do not work, otherwise it will affect the lifetime of the machinery, or damage electronic circuitry.
- 14.) When Storms (Thunder & Lightning) are near facility, do not work on Fiber Marker OM Machine.



Maintenance-

Because of the working environment, optical lens may have dirt build up after a period of time, if not maintained.

Dust will corrode lens coating, damaged lens coating can't reflect light to create laser, oppositely the corrosion will absorb laser heat, affecting marking effect, and easily cause lens to crack.

When cleaning the lens use soft lens paper or absorbent cotton swabs and place in a Medical Alcohol Rotary Device for cleaning along the central to the brink of the lens.

Note! Do not use any coarse materials to wipe or to touch lenses.

Details to give attention to:

- 1.) Lens should be wiped gently, so not to damage the coating surface.
- 2.) Wiping Method: Do not wipe back and forth, do not brush with rough materials, because the lens with a metal film, the film will lead to a damage of laser energy and decline in performance.
- 3.) An absorbent cotton wipe or swab can only be used once. The cotton should be clean, and the alcohol should stay on the wipe or swab completely before being used.



Safety-

Notes-

- Avoid dangerous accidents and reduce maintenance costs, reducing downtime of examine and repair, also can improve the credibility and the working life of the machine.
- This manual including industrial injury prevention and protection matters for environmental, the user can replenish according to its specific conditions.
- Instructions shall be stored in the machines for reference.
- The operator should have the relevant technical training, and or guidance.

Safety Requirements-

Improper use can lead to personal injury, so please read the knowledge of the safety about the laser, in order to avoid personal injury, and prevent the damaged of the product or other production connection with. In order to avoid the possibility of danger, this product can only use within a prescribed scope.

- 1.) Do not let the laser directing your eye or others, even if lasers in close condition because there maybe occurred an error.
- 2.) Any irrelevant total reflection and diffuse object is prohibited placed near the equipment, In case of laser directly reflect to the human body or flammable items.
- 3.) Lasers are not toys, do not give to children, mental incompetence, and the people who not know the characteristics of laser to use, in this case, vulnerable to damage.



Safety (Cont'd.)-

Safety Requirements-

- 4.) Because this type of laser operates with an invisible light, it is strictly prohibited to have flammable and explosive items near the laser, in case of deviation laser fires.
- 5.) For invisible laser, we suggest to wear approved safety glasses for Fiber Marker Laser machines when in use.
- 6.) The top cover plate must be closed when working, in case of the laser deviates and could cause injury.
- 7.) When the voltage instability, or you must use a voltage stabilizer.
- 8.) Fiber Optic Equipment Filter Screen & Fan should be cleaned on a regular basis. We suggest not to operate machine when amperemeter is at its maximum state, if the Filter Screen & Optics are unclean, this will lead to break down in laser power, shorten the life of laser.
- 9.) Cut off the power immediately, If the machine malfunctions or there is an outbreak of fire.



Safety (Cont'd.)-

Safety Requirements-

In a suspicious fault, do not operate. If you suspect the damage is exist, contact us for inspection, do not continue to operate.

Do not operate in a wet environment.

Do not operate in explosive environment.

Keep the surface clean and dry.



Laguna Tools Warranty-

Dealer Machinery Warranty

New woodworking machines sold by Laguna Tools carry a two-year warranty effective from the date of dealer invoice to customer/end-user. Machines sold through dealers must be registered with Laguna Tools within 30 days of purchase to be covered by this warranty. Laguna Tools guarantees all new machine sold to be free of manufacturers' defective workmanship, parts and materials. We will repair or replace, without charge, any parts determined by Laguna Tools, Inc. to be a manufacturer's defect. We require that the defective item/part be returned to Laguna Tools with the complaint. The end-user must request an RMA (return material authorization) number from Customer Service and include the (RMA) number with any and all returned parts/components requesting warranty coverage.* Any machines returned to Laguna Tools must be returned with packaging in the same manner in which it was received. If a part or blade is being returned it must have adequate packaging to ensure no damage is received during shipping. In the event the item/part is determined to be damaged due to lack of maintenance, cleaning or misuse/abuse, the customer will be responsible for the cost to replace the item/part, plus all related shipping charges. This limited warranty does not apply to natural disasters, acts of terrorism, normal wear and tear, product failure due to lack of maintenance or cleaning, damage caused by accident, neglect, lack of or inadequate dust collection, misuse/abuse or damage caused where repair or alterations have been made or attempted by others.

****NOTE: Issuing an RMA number is for referencing materials and issues, it does NOT indicate warranty acceptance/conformity.**



Laguna Tools Warranty-

CNC Limited Warranty

New CNC machines sold by Laguna Tools carry a one-year warranty effective from the date of shipping. Laguna Tools guarantees all new machine sold to be free of manufacturers' defective workmanship, parts, and materials. We will repair or replace without charge, any parts determined by Laguna Tools, Inc. to be a manufacturer's defect. We require that the defective item/part is determined to be damaged due to lack of maintenance, cleaning or misuse/abuse, the customer will be responsible for the cost to replace the item/part, plus all related shipping charges. This limited warranty does not apply to natural disasters, acts of terrorism, normal wear and tear, product failure due to lack of maintenance or cleaning, damage caused by accident, neglect, lack of or inadequate dust collection, misuse/abuse or damage caused where repair or alterations have been made or attempted by others.

Laguna Tools, Inc. is not responsible for additional tools or modifications sold or performed (other than from/by Laguna Tools, Inc.) on any Laguna Tools, Inc. woodworking machine. Warranty maybe voided upon the addition of such described tools and/or modifications, determined on a case-by-case basis. Software purchased through Laguna Tools, Inc., is not covered under this warranty and all technical support must be managed through the software provider. Normal user alignment, adjustment, tuning and machine settings are not covered by this warranty. It is the responsibility of the user to understand basic woodworking machinery settings and procedures and to properly maintain the equipment in accordance with the standards provided by the manufacturer.

Parts under warranty are shipped at Laguna Tools, Inc.'s cost either by common carrier, FEDEX ground service or a similar method. Technical support to install replacement parts is primarily provided by phone, fax, e-mail or Laguna Tools Customer Support Website. The labor required to install replacement parts is the responsibility of the user. Laguna Tools is not responsible for damage or loss caused by a freight company or other circumstances not in our control. All claims for loss or damaged goods must be notified to Laguna Tools within twenty-four hours of delivery.

Please contact our Customer Service Department for more information. Only NEW machines sold to the original owner are covered by this warranty. For warranty repair information, call 1-800-332-4094. Copyright 2013 Laguna Tools, Inc. *Warning – no portion of these materials may be reproduced without written approval from Laguna Tools, Inc.**



Laguna Tools Warranty-

WARRANTY & REGISTRATION

THANK YOU!

Welcome to the Laguna Tools® group of discriminating woodworkers. We understand that you have a choice of where to purchase your machines and appreciate the confidence you have in the Laguna Tools® brand.

Through hands-on experience, Laguna Tools® is constantly working hard to make innovative, precision products. Products that inspire you to create works of art, are a joy to operate, and encourage your best work.

Laguna Tools®
Imagination, Innovation, and Invention at Work

WARRANTY & REGISTRATION

Every product sold is warranted to be free of manufacturers' defective workmanship, parts, and materials. For any questions about this product, the intended use or what it was designed for, customer service, or replacement parts, please contact our customer service department:

Laguna Tools® Customer Service
2072 Alton Parkway, Irvine, California 92606, USA
1-800-332-4049
customerservice@lagunatools.com
www.lagunatools.com/why/customer-service/
8AM. to 5PM PST, Monday through Friday

For warranty claims or to report damage upon receiving – please reach out to our warranty department:

Laguna Tools® Warranty Service
2072 Alton Parkway, Irvine, California 92606, USA
1-949-474-1200
customerservice@lagunatools.com
www.lagunatools.com/policies/warranty
8AM to 5PM PST, Monday through Friday

REGISTRATION

To prevent voiding this warranty, all products sold must be registered within thirty (30) days of receiving the product. Registering the product will enable the original purchaser to receive notifications about important product changes, receive customer service, and be able to file a warranty claim against defective workmanship, parts, or materials.

WHO IS COVERED

The applicable warranty covers only the initial purchaser of the product from the date of receiving the product. To file such claims, the original purchaser must present the original receipt as proof of purchase.

WHAT IS COVERED

The warranty covers any defects in the workmanship of all parts and materials that make up the machine unless otherwise specified. Any part, determined by Laguna Tools®, to have a defect will be repaired or replaced (and shipped), without charge. The defective item/part must be returned to Laguna Tools® with the complaint and proof of purchase in the original packaging that it was received in. In the event the item/part is determined to be not covered by this warranty, the customer will be responsible for the cost to replace the item/part and all related shipping charges.



WARRANTY LIMITATIONS

This limited warranty does not apply to natural disasters, acts of terrorism, normal wear and tear, product failure due to lack of maintenance or cleaning, damage caused by accident, neglect, or lack-of inadequate dust collection. The warranty may be voided against proof of misuse/abuse, damage caused where repair or alterations have been made or attempted by others, using the product for purposes other than those described as intended use (unless with consent by Laguna Tools®), modification to the product, or use with an accessory that was not designed for the product. It is the responsibility of the user to understand basic woodworking machinery settings and procedures and to properly maintain the equipment in accordance with the standards provided in this manual.

LENGTH OF WARRANTY

All new machines and optional accessories sold through an authorized dealer carry a two-year warranty effective the date of receiving the product. Machines sold for either commercial or industrial use have a one-year warranty. Wearable parts like throat plates, bandsaw guides, etc., have a ninety-day warranty.

Table A-1 Warranty Lengths

2 Year – New Machines Sold Through an Authorized Dealer
2 Year – Accessories Sold as Machine Options (excluding blades)
1 Year – Machines Sold for Commercial or Industrial Use
1 Year – Blades and Accessories outside of Machine Options
90 Days – Wearable Parts

Aside from being free of defects upon receiving, consumable parts, like cutters and abrasives, are not covered by this warranty unless otherwise stated by Laguna Tools®. These parts are designed to be used at the expense of the operator and are available for replacement or inventory purchase. The determination of a consumable part will be made on a case-by-case basis by Laguna Tools®.

SHIPPING DAMAGE

Laguna Tools® is not responsible for damage or loss caused by a freight company or other circumstances not in the direct control of Laguna Tools®. All shipping-related claims for loss or damage goods must be made to Laguna Tools within twenty-four hours of delivery.

HOW TO RECEIVE SUPPORT

To file a warranty-claim please contact the warranty department at 1-949-474-1200. To receive customer service or technical support please contact the customer service department at 1-800-332-4094. Parts, under warranty, are shipped at the expense of Laguna Tools® either by common carrier, FedEx ground services or similar method. Technical support to install replacement parts is primarily provided by phone, fax, email, or the Laguna Tools Customer Support Website.





Laguna Tools Warranty-

No Modifications Allowed or Sold.

Laguna Tools, Inc. is not responsible for additional tools or modifications sold or performed (other than from/by Laguna Tools, Inc.) on any Laguna Tools, Inc. woodworking machine. Warranty maybe voided upon the addition of such described tools and/or modifications, determined on a case-by-case basis. Normal user alignment, adjustment, tuning and machine settings are not covered by this warranty. It is the responsibility of the user to understand basic woodworking machinery settings and procedures and to properly maintain the equipment in accordance with the standards provided by the manufacturer. Parts, under warranty, are shipped at Laguna Tools, Inc.'s cost either by common carrier, FEDEX ground service or a similar method. Technical support to install replacement parts is primarily provided by phone, fax, e-mail or Laguna Tools Customer Support Website. The labor required to install replacement parts is the responsibility of the user. Laguna Tools is not responsible for damage or loss caused by a freight company or other circumstances not in our control. All claims for loss or damaged goods must be notified to Laguna Tools within twenty-four hours of delivery. Please contact our Customer Service Department for more information. Only new machines sold to the original owner are covered by this warranty. **For warranty repair information, call 1-800-332-4094.**



Laguna Tools Packaging/RMA Procedures-

Dealer Machinery Warranty

****Any machines returned to Laguna Tools must be returned with packaging in the same manner in which it was received. If a part or blade is being returned it must have adequate packaging to ensure no damage is received during shipping. In the event the item/part is determined to be damaged due to lack of maintenance, cleaning or misuse/abuse, the customer will be responsible for the cost to replace the item/part, plus all related shipping charges.**

We require that the defective item/part be returned to Laguna Tools with the complaint. The end-user must request an **RMA (Return Material Authorization) Number** from Customer Service and include the (RMA) number with any and all returned parts/components requesting warranty coverage.



Laguna Tools Packaging/Laguna Tools RMA Example-

RMA #
RTN. AUTH. #
CR10979

12/1/2020 Return Authorization - NetSuite (Laguna Tools, Inc)

Return Authorization
CR10979

[Edit](#) [Back](#) [Receive](#) [Close](#)

PENDING RECEIPT

Actions

CUSTOMER
Laguna Tools, Inc

DATE
11/5/2020

CURRENCY
USD

SUBSIDIARY
Laguna Tools, Inc

RTN. AUTH. #
CR10979

DEPARTMENT
Sales - Wholesale

PRODUCT LINE
Laguna Texas Demo / Returns

LOCATION
Laguna Texas Demo / Returns

SALES REP
Benjamin Helshoj

PARTNER
PO 981

LEAD SOURCE
PO 981

PO #
PO-981

MEMO

CREATED FROM
Summary

SALES EFFECTIVE DATE
11/5/2020

EST. EXTENDED COST
SUBTOTAL

EST. GROSS PROFIT
DISCOUNT

EST. GROSS PROFIT PERCENT
GST/HST

PROMISE DATE
5/12/2020

DEPOSIT RECEIVED

ACCOUNTING APPROVAL

COMMENTS
Customer's bandsaw cast iron at the bottom is bent the customer can't insert bolts to stand. No shipping damage machine arrived in excellent condition do damage to packaging.
PO 981

RETURN REASON
Manufacturers Warranty Defect

SHIP IMMEDIATE
SPLIT SHIP

REVISED INVOICE

ORDER HOLD REASON

SHIPPING COMMENTS

Items Promotions Address Messages History Workflow Custom Partners Sales Team Additional Information OzLINK Pacejet SPS

EXCHANGE RATE **RATE**

DISCOUNT

ITEM	RETURNED	REFUNDED	QUANTITY	UNITS	INVENTORY	DESCRIPTION	PRICE	UNIT PRICE	AMOUNT	TAX	TAX	PST	OPTIONS	GIFT	CERTIFICATE	CLOSED	SHIPMENT	COI	EST	TYF
Machine : Bandsaw : MBAND1412-175 14/12 Bandsaw 110V 1.75HP	0	0	1	Each	14-12 110 VOLT BANDSAW	Retail Price				CA-GST only	5.0%	0.0%								

[Edit](#) [Back](#) [Receive](#) [Close](#) **Actions**



Laguna Tools Packaging/Laguna Tools BILL of LADING Example-

SHIP FROM		SHIP TO		FREIGHT CHARGES BILL TO					
Date: 12/02/2020 Name: Address: FOB: <input type="checkbox"/>		Name: Laguna Tools TX Address: 744 Refuge Way Suite 200 City/State/Zip: GRAND PRAIRIE, TX 75050 Ph: 9494741200 Contact: Vince (ZM) RMACR11096 FOB: <input type="checkbox"/>		Name: Worldwide Express Address: 2828 Routh Street Suite 400 City/State/Zip: Dallas, TX 75204 W7E Number: W709699351					
BILL OF LADING Bill of Lading Number: 145787446 Carrier Name: Estes Express SCAC: EXLA Pro number: Freight Charge Terms: (freight charges are prepaid by Worldwide Express unless indicated otherwise)									
SPECIAL INSTRUCTIONS: For assistance, please call 833-8WE-SHIP Handling Instructions: RMACR11096 Pickup Instructions: Delivery Instructions: RMACR11096 Pickup Service(s): Liftgate Pickup, Residential Pickup									
REFERENCE NUMBER INFORMATION									
REFERENCE	# PKGS	REFERENCE	# PKGS	Total # of Pkgs					
CARRIER INFORMATION									
HANDLING UNITS		PIECES		WEIGHT	H.M. X	COMMODITY DESCRIPTION		LTL ONLY	
QTY	TYPE	QTY	TYPE			NMFC#	CLASS		
1	PLT			385		machine, 48(L) x 48(W) x (H) DO NOT STACK			77.5
1				385		Grand Total			
Where the rate is dependent on value, shippers are required to state specifically in writing the agreed or declared value of property as follows: The agreed or declared value of the property is specifically stated by the shipper to be not exceeding _____ per _____ Note: Liability limitation for loss or damage in this shipment may be applicable. See 49 U.S.C. B14708(c)(1)(A) and (B).						COD Amount: \$ Fee Terms: 9 th Party W7E Remit Address:		Acceptable Forms of Payment: <input type="checkbox"/> Bank Certified Check <input type="checkbox"/> Customer Check <input type="checkbox"/> Personal Check <input type="checkbox"/> Money Order	
RECEIVED, subject to individually determined rates or contracts that have been agreed upon in writing between the carrier and Worldwide Express Operations, LLC, a registered motor carrier broker, pursuant to 49 USC 14101(b) and all applicable state and federal regulations.						CARRIER SIGNATURE / PICKUP DATE Carrier acknowledges receipt of packages and required placards. Carrier certifies emergency response information was made available and/or carrier has DOT emergency response guidebook or equivalent documentation in vehicle. Property described above is received in good order, except as noted.		SHIPPERS SIGNATURE / DATE This is to certify that the above-named materials are properly classified, described, packaged, marked and labeled, and are in proper condition for transportation according to the applicable regulations of the Department of Transportation.	
<input type="checkbox"/> By Shipper <input type="checkbox"/> By Driver		Trailer Loaded: <input type="checkbox"/> By Shipper <input type="checkbox"/> By Driver/Pallet <input type="checkbox"/> By Driver/Pieces		Freight Counted: <input type="checkbox"/> By Shipper <input type="checkbox"/> By Driver/pallet <input type="checkbox"/> By Driver/Pieces		(Signature) _____ (Date) _____		(Signature) _____ (Date) _____	

Bill of Lading Number : 145787446

SPECIAL INSTRUCTIONS: For assistance, please call 833-8WE-SHIP
 Handling Instructions: RMACR11096
 Pickup Instructions:
 Delivery Instructions: RMACR11096
 Pickup Service(s): Liftgate Pickup, Residential Pickup