

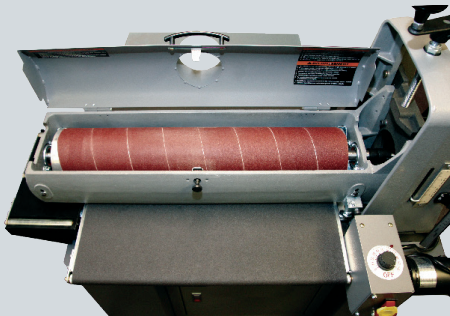


SUPERMAX 25-50

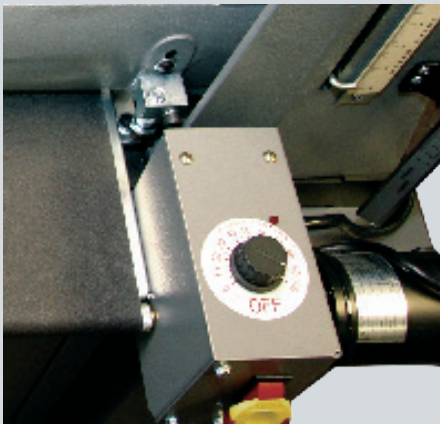
INTELLISAND



INCLUDES CLOSED STAND WITH BUILD-IN CASTERS FOR EASY MOBILITY AND ADDITIONAL STORAGE.



DRUM CARRIGE BOLTED TO BASE



INTELLISAND CONTROL

The SuperMax 25-50 Drum Sander is the largest open-ended Drum Sander on the market.

EXCEPTIONAL SUPERMAX FEATURES

- Indexed alignment setting for narrow and wide stock. When sanding stock wider than 25", the index lever will properly adjust the conveyor for flawless wide sanding.
- Easy height adjustments. A thrust bearing below the handle and a nut positioned above prevents the drum from moving out of the set position while sanding. No backlash or slop in the height adjustment mechanism allowing easier and smoother height adjustments.
- Drum will never go "out of alignment". The drum carriage is bolted to the base, preventing any movement or alignment issues.
- **INTELLISAND** Technology: Automatically adjusts conveyor speed based on load.
- Flatness Guarantee: Precision-flattened steel conveyor bed reinforced with four steel cross sections for no "flex" in conveyor, guaranteeing flatness to less than .010 across the width of the sander.
- Patented Abrasive Attachment System effectively tensions the abrasive wraps, preventing loose abrasive and overlap.
- Tension rollers are adjustable in height and hold down pressure, eliminating snipe.

SPECIFICATIONS

Sanding Capacity:	Maximum Width: 50" (two passes) Minimum Length: 2-1/4" Maximum Thickness: 4" Minimum Thickness: 1/32"
Dimensions (in):	27"D x 46"W x 53"H (on stand)
Drum:	5 x 25 extruded aluminum
Drum Speed:	1740 RPM
Dust Hood:	One 4" vacuum port, min. 600 CFM recommended
Conveyor Motor:	43 lb. torque, direct drive D.C. motor, range variable 0-10 FPM
Drive Motor (TEFC):	1-3/4 HP
Power Requirements:	110 V 20 Amp service needed
Shipping Weight (lbs):	369 (3 boxes include stand)

Scan For More Info



SUPERMAX ACCESSORIES



SuperMax Expandable Roller Conveyor

The expandable roller stand assistive conveyor. Adjustable height and length make it ideal for any size workshop.

SUPMX-875600

SPECIFICATIONS

Maximum Load Capacity:	200lbs
Minimum Length:	14" 3/4
Maximum Length:	50
Adjustable Height:	23 to 36
Number of Rollers:	9 Nickel Plated
Rollers Dimensions (Dia x W):	1" 1/2" x 13" 3/4"
Swivel Casters:	4"x 3" W/Footbrake



SuperMax Abrasive Cleaning Stick

Use our abrasive cleaning stick to clean up your sandpaper and get it back in shape. **SUPMX-59120**



*Item shown fits on our 19-38 and 25-50 drum sanders.

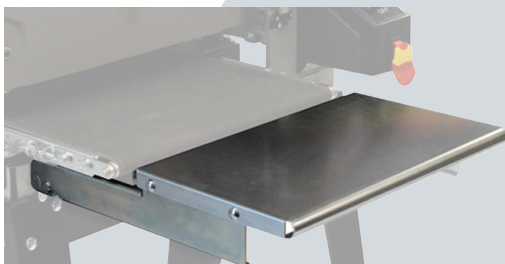
SuperMax Digital Read Out

The DRO (Digital Read Out). Advised for those who need a high level of accuracy with the thickness of their wood after sanding. **SUPMX-71938-DRO**



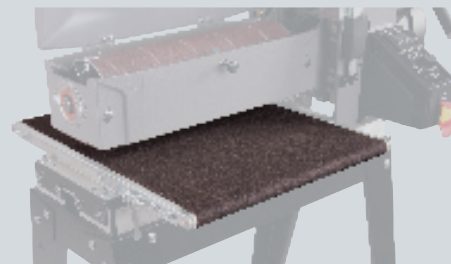
SuperMax Abrasive Wraps

Comes in 36, 60, 80, 100, 120, 150, 180, & 220 Grit Sand Paper.



SuperMax Folding Infeed Outfeed Tables

SuperMax infeed and outfeed tables help accommodate larger pieces of wood for sanding. **SUPMX-71938-7F-CL**



SuperMax Abrasive Conveyor Belts

For the 16-32, 19-38 & 25-50 SuperMax Drum Sander.