



220V
3 HP

SPECIFICATIONS

2.5HP 220V Part Number:	MBAND14BX220-250
TEFC Motor/9.8 Amp./6 ft. cord NEMA 6-15P Plug	
220V Outlet on Back for Optional Light	✓
Recommended Breaker:	20-30 Amp.
Min-Max Blade Width:	1/4" - 1-1/4"
Resaw Capacity:	16"
Blade Length:	145"
Hi/Low Aluminum Fence:	22-3/4" x 7-1/4" x 1-3/4"
Table Tilt:	-6°, +45°
Quick Release Tension:	✓
10-Point Laguna Ceramic Guides:	✓
Cast Table Size:	20" x 26"
Magnetic Starter:	✓
Dual Light Mount:	✓
Worm Gear Rack & Pinion:	✓
Massive Cast Trunnion:	8" X 13"
Dust Ports:	4 x 2"
Cast Iron Wheels:	✓
Disc Brake with Micro Switch:	✓
Anodized Insert w/Micro Adjustment:	✓
Magnetic Blade Guard:	✓
Magnetic Blade Tension Guide:	✓
Urethane Single Piece Snap-on Tire:	✓
Table Height:	38"
Overall Height:	77-3/4"
Footprint:	36" x 30"
Weight (Net/Ship):	410/460 Lbs.



Ergonomic Control Panel



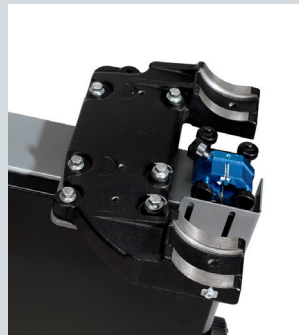
8" Disc Brake



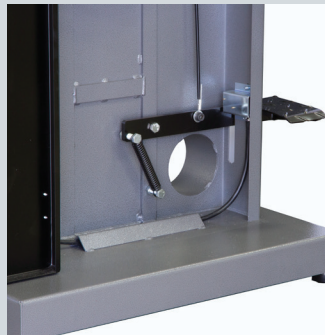
Oversized Lower Shaft



Dual 4" Dustport



Massive Cast Trunnion



Foot-Brake w. Micro-Switch

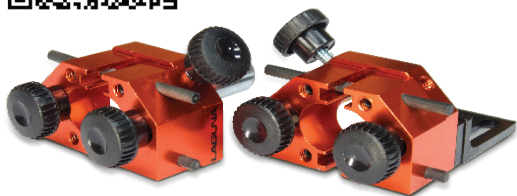


Brake Disc + Caliper

Scan For More Info



18|bx ACCESSORIES



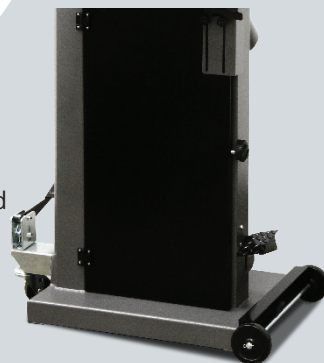
LAGUNA MINI GUIDES

Laguna Mini Guides attach easily to accommodate smaller blades. Recommended for sizes under 1/4". 1 short phenolic rod is provided when tilting table. ABMG001

PRO WHEEL SYSTEM

MBA18|BX Wheel System

- Foot Operated
- 360° Omni-Directional
- Rubber-Coated Wheels
- Adjustable Rubber Pads
- Easy Install with No Drilling Required
- Pedal Raises & Lowers Front Wheel
- Oilite Bronze Bushing Allows for Less Friction and Longer Life
- Wheels Mounted Outside Frame to Maximize Stability



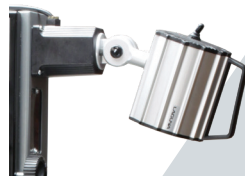
PHENOLIC ROD REPLACEMENTS

ABMG002



PRO LIGHT SHORT ARM

MBA14/12 LIGHT (110V)



LED LIGHT OPTIONS

ALEDMACH, ALEDLATHE, ALEDSPINE

- Chameleon Color Temperature Control
- Casted Impact resistant head
- Low Heat & Energy Consumption
- 110V Plug Included
- Plug Change Required for 220V (ALEDSPINE)
- Shadow Diffusing Lens (ALEDMACH, ALEDSPINE)
- Full Brightness Control
- Polyamide Impact Resistant Head (ALEDSPINE)

PRO LIGHT DOUBLE ARM

ALAREVO18 Light (110v)
MBA14BX-LIGHT220-DA (220V)



LAGUNA BANDSAW BLADES



MADE IN SWEDEN



MADE IN USA



MADE IN GERMANY

PROFORCE

- 1-Year Warranty
- Heat-treated Teeth
- Heavy-duty Blade
- Finest blade on market
- Affordable Blade
- Widths from 1/8" to 2"

SHEAR FORCE

- Thin Kerf Blade
- Perfect for Resawing
- .024" Backing
- Thin Kerf Reduces Waste

RESAW KING

- Elite Blade
- C-4 Carbide Tipped
- Ultra-Thin Kerf
- Smooth Finish
- Resharpenable