

REVO 12|16

Scan For More Info



"Shown with optional stand"

PWM Pulse Width Modulation State-of-the-Art Controller

utilizes transistors to make communication between the motor & controller much quicker. PWM controls stabilize the RPM while increasing the torque when needed.

LAGUNA BEARINGS

Our bearings are sealed, preloaded & press fit into cast iron housing:

Front Bearing is pressed fit into headstock to ensure center to center alignment and stability under stress.

Rear Bearing is designed to float within housing (+0.0006") on LEFT side. RIGHT side has a bearing wave washer locked in place by precision lock nut.

**THE BASIC DYNAMIC LOAD RATING IS
31% HIGHER THAN A 6005 BALL BEARING.**

STANDARD ON REVO 15|24

Spindle Thread:	1" x 8" TPI (Both Ends)
Floor Space (W x D):	35.8" x 14.6"
Certification:	CSA C/US
Weight (Net/Ship):	118/125 lbs

REVO 12|16 SPECIFICATIONS

Motor:	1HP 110V
Recommended Breaker Size:	15 Amp
PWM:	Pulse Width Module Speed Control
Spring Loaded Spindle Lock:	✓
Swing Over Bed:	12-1/2"
Swing Over Banjo:	9-1/2"
Max Outboard Swing with Optional Accessory :	16"
Tool-Rest Post Size:	1"
Tool-Rest Length:	6"
Bed Gap:	1-1/4"
Spindle Taper:	MT#2
RPM High:	650-3500
RPM Mid:	325-1750
RPM Low:	50-525
Accepts Vacuum Chuck:	No
Tailstock Quill Travel:	2-1/2"
Floor to Spindle Center Low:	13" No Pads
Floor to Spindle Center High:	51-13/32"
Floor To Bed Min:	6.7" No Pads
Floor To Bed Max:	43-19/32"
Front Bearing:	6006LLU
Rear Bearing:	6005LLU
Spindle Index #:	24 Positions w/Lock
Distance Between Centers:	24"
Headstock/Tailstock Through-Bore:	3/8"
Shipping Dimensions:	37" x 15" x 21"

Scan For More Info



REVO 12|16 ACCESSORIES



ALAREVO1216-STAND

ADJUSTABLE STAND

Never has a Midi Lathe been supported this well. Adjustable from 39"– 45" at spindle center & featuring ergonomic multi-tool shelving. Net Weight is a whopping 81 lbs. making Revo 12|16 mounted on a stand the combined 199 lbs.

*Accessory Options Available



ALAREVO18 LIGHT

INDUSTRIAL FLOOD LIGHT

Halogen light with built-in transformer. Dust-Proof Ribbed Aluminum Case swivels 320° & features a bright, glare-free flood light.

The Revo comes standard with two pre-drilled brackets that allow users to install dual lights without drilling.



ALAREVO1216 20" EXT.

10" EXPANSION SET

10" Expansion Set comes with 10" Bed Extension, cast-iron swing banjo extension for tool rest, spindle adapter, and hardware.



ALAREVO1216 BANJO

20" EXTENSION

The 20" Bed Extension allows users to extend the center-to-center capacity by 20 inches for a total of 36" turning length.

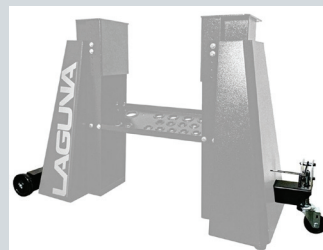
Fits Laguna Revo 12/16 lathe only.



ALAREVO1216 TOOL

TOOL REST

Centers used to mount an original or template for visual copying.



MBA14/12 WHEEL SYSTEM

DELUXE WHEEL SYSTEM

The wheel system allows the lathe to be easily moved around the shop.