

# i | FLUX:3



## 5HP BAG FILTER DUST COLLECTOR

LAGUNA



## TABLE OF CONTENTS

- Important Safety Instructions
- Safety Guidelines - Definitions
- General Safety Rules
  - Additional Safety For Dust Collectors
  - Power Connections
  - Motor Specifications
  - Grounding Instructions
- Key Features and Components
- Functional Description
- Product Specifications
- Assembly
  - General Tool Assembly
- Maintenance Procedures
  - Cleaning the Filter
  - Routine Inspection
- Trouble Shooting
- Parts breakdown and parts list



## IMPORTANT SAFETY INSTRUCTIONS

### **⚠ WARNING**

READ AND UNDERSTAND ALL WARNINGS AND OPERATING INSTRUCTIONS BEFORE USING THIS EQUIPMENT. Failure to follow all instructions listed below, may result in electric shock, fire, and/or serious personal injury or property damage.

Woodworking can be dangerous if safe and proper operating procedures are not followed. As with all machinery, there are certain hazards involved with the operation of the product. Using the machine with respect and caution will considerably lessen the possibility of personal injury. However, if normal safety precautions are overlooked or ignored, personal injury to the operator may result. Safety equipment such as guards, push sticks, hold-downs, featherboards, goggles, dust masks and hearing protection can reduce your potential for injury. But even the best guard won't make up for poor judgment, carelessness or inattention. **Always use common sense** and exercise caution in the workshop. If a procedure feels dangerous, don't try it. Figure out an alternative procedure that feels safer. **REMEMBER:** Your personal safety is your responsibility.

### **⚠ WARNING**

This machine was designed for certain applications only. We strongly recommend that this machine not be modified and/or used for any application other than that for which it was designed. If you have any questions relative to a particular application, DO NOT use the machine until you have first contacted the manufacturer to determine if it can or should be performed on the product.

If you have any questions relative to its application DO NOT use the product until you have contacted the manufacturer and we have advised you.

When using an electrical appliance, basic precautions should always be followed, including the following:

#### READ ALL INSTRUCTIONS BEFORE USING (THIS APPLIANCE)

### **⚠ WARNING**

To reduce the risk of fire, electric shock, or injury:

1. Do not leave appliance when plugged in. Unplug from outlet when not in use and before servicing.
2. Do not use outdoors or on wet surfaces
3. Do not allow to be used as a toy. Close attention is necessary when used by or near children.
4. Use only as described in this manual. Use only manufacturer's recommended attachments.



5. Do not use with damaged cord or plug. If appliance is not working as it should, has been dropped, damaged, left outdoors, or dropped into water, return it to a service center.
6. Do not pull or carry by cord, use cord as a handle, close a door on cord, or pull cord around sharp edges or corners. Do not run appliance over cord. Keep cord away from heated surfaces.
7. Do not unplug by pulling on cord. To unplug, grasp the plug, not the cord.
8. Do not handle plug or appliance with wet hands.
9. Do not put any object into openings. Do not use with any opening blocked; keep free of dust, lint, hair, and anything that may reduce air flow.
10. Keep hair, loose clothing, fingers, and all parts of body away from openings and moving parts.
11. Turn off all controls before unplugging.
12. Use extra care when cleaning on stairs.
13. Do not use to pick up flammable or combustible liquids, such as gasoline, or use in areas where they may be present.
14. Connect to a properly grounded outlet only. See Grounding Instructions.

### **SAVE THESE INSTRUCTIONS**

1. Read and understand the warnings posted on the machine and in this manual. Failure to comply with all of these warnings may cause serious injury.
2. Replace the warning labels if they become obscured or removed.
3. This Dust Collector is designed and intended for use by properly trained and experienced personnel only. If you are not familiar with the proper and safe operation of this type of dust collector, do not use until proper training and knowledge have been obtained.
4. Do not use this machine for other than its intended use. If used for other purposes, **LAGUNA TOOLS INC.**, disclaims any real or implied warranty and holds itself harmless from any injury that may result from that use.
5. Always wear approved safety glasses/face shields while using this machine.
6. Before operating this dust collector, remove tie, rings, watches and other jewelry, and roll sleeves up past the elbows. Remove all loose clothing and confine long hair. Non-slip footwear or anti-skid floor strips are recommended. Do **not** wear gloves.
7. Wear ear protectors (plugs or muffs) during extended periods of operation.



8. Some dust created by power sanding, sawing, grinding, drilling and other construction activities contain chemicals known to cause cancer, birth defects or other reproductive harm. Some examples of these chemicals are:
- Lead from lead based paint.
  - Crystalline silica from bricks, cement and other masonry products.
  - Arsenic and chromium from chemically treated lumber.

Your risk of exposure varies, depending on how often you do this type of work. To reduce your exposure to these chemicals, work in a well-ventilated area and work with approved safety equipment, such as face or dust masks that are specifically designed to filter out microscopic particles.

9. Do not operate this machine while tired or under the influence of drugs, alcohol or any medication.
10. Make certain the switch is in the **OFF** position before connecting the machine to the power source.
11. Make certain the machine is properly grounded.
12. Make all machine adjustments or maintenance with the machine unplugged from the power source.
13. Form a habit of checking to see that all extra equipment such as adjusting keys, wrenches, scrap, stock, and cleaning rags are removed away from the machine before turning on.
14. Keep safety guards in place at all times when the machine is in use. If removed for maintenance purposes, use extreme caution and replace the guards immediately when maintenance is complete.
15. Make sure the dust collector is on a flat even surface and the wheels locked in place before use.
16. Check damaged parts. Before further use of the machine, a guard or other part that is damaged should be carefully checked to determine that it will operate properly and perform its intended function. Check for alignment of moving parts, binding of moving parts, breakage of parts, mounting and any other conditions that may affect its operation. A guard or other part that is damaged should be properly repaired or replaced.
17. Provide for adequate space surrounding work area and non-glare, overhead lighting.



18. Keep the floor around the machine clean and free of scrap material, oil and grease.
19. Keep visitors a safe distance from the work area. **Keep children away.**
20. Make your workshop child proof with padlocks, master switches or by removing starter keys.
21. Give your work undivided attention. Looking around, carrying on a conversation and "horse-play" are careless acts that can result in serious injury.
22. Maintain a balanced stance at all times so that you do not fall or lean against the dust collector. Do not overreach or use excessive force to perform any machine operation.
23. Use the right tool at the correct speed and feed rate. Do not force a tool or attachment to do a job for which it was not designed. The right tool will do the job better and safer.
24. Use recommended accessories; improper accessories may be hazardous.
25. Maintain machinery with care. Follow instructions for lubricating and changing accessories.
26. Turn off the machine before cleaning. Use a brush or compressed air to remove dust or debris — do not use your hands.
27. Do not stand on the machine. Serious injury could occur if the machine tips over.
28. Never leave the machine running unattended. Turn the power off and do not leave the machine until it comes to a complete stop.

Familiarize yourself with the following safety notices used in this manual:

## **SAFETY GUIDELINES - DEFINITIONS**

This manual contains information that is important for you to know and understand. This information relates to protecting YOUR SAFETY and PREVENTING EQUIPMENT PROBLEMS. To help you recognize this information, we use the symbols below. Please read the manual and pay attention to these sections.



Indicates an imminently hazardous situation which, if not avoided, will result in death or serious injury.



Indicates a potentially hazardous situation which, if not avoided, could result in death or serious injury.



Indicates a potentially hazardous situation which, if not avoided, may result in minor or moderate injury.



Used without the safety alert symbol indicates potentially hazardous situation which, if not avoided, may result in property damage.

## GENERAL SAFETY RULES



**WARNING FAILURE TO FOLLOW THESE RULES MAY RESULT IN SERIOUS PERSONAL INJURY.**

**FOR YOUR OWN SAFETY, READ AND UNDERSTAND THE INSTRUCTION MANUAL BEFORE OPERATING THE MACHINE.** Learn the unit's application and limitations as well as the specific hazards peculiar to it.

**KEEP WORK AREA CLEAN.** Cluttered areas and benches invite accidents.

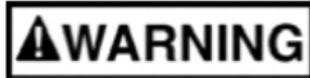
**DON'T USE IN DANGEROUS ENVIRONMENT.** Don't use this unit in damp or wet locations, or expose it to rain. Keep work area well-lighted.

**KEEP CHILDREN AND VISITORS AWAY.** All children and visitors should be kept a safe distance from work area.

**DISCONNECT UNIT** before servicing.

**CHECK DAMAGED PARTS.** Before further use of the unit, properly repair or replace any part that is damaged.





**FAILURE TO FOLLOW THESE RULES MAY RESULT IN SERIOUS INJURY.**

## **ADDITIONAL SAFETY FOR DUST COLLECTORS**

**Intended use.** This dust collector is only intended for collecting wood dust and chips from woodworking machines. Do not use this dust collector to collect metal, dirt, pebbles, drywall, asbestos, lead paint, silica, liquids, aerosols, or any flammable, combustible, or hazardous materials.

**Hazardous dust.** Dust created while using machinery may cause cancer, birth defects, or long-term respiratory damage. Be aware of dust hazards associated with each work piece material, and always wear a NIOSH-approved respirator to reduce your risk.

**Dust allergies.** Dust from certain woods may cause an allergic reaction in people and animals. Make sure you know what type of wood dust you will be exposed to in case there is a possibility of an allergic reaction.

**Wear respirator.** Fine dust that is too small to be caught in the filter will be blown into the ambient air during operation. Always wear a NIOSH-approved respirator during operation and for a short time after to reduce your risk of permanent respiratory damage.

**Emptying dust.** When emptying dust from the collection container, wear a respirator and safety glasses. Empty dust away from ignition sources and into an approved container.

**Disconnecting power supply.** Turn the switch off, disconnect the dust collector from the power supply, and allow the impeller to come to a complete stop before leaving the machine unattended or doing any service, cleaning, maintenance, or adjustments.

**Suspended dust particles and ignition sources.** Do not operate the dust collector in areas where explosion risks are high. Areas of high risk include, but are not limited to, areas near pilot lights, open flames, or other ignition sources.

**Fire suppression.** Only operate the dust collector in locations that contain a fire suppression system or have a fire extinguisher nearby.

**Impeller hazards.** Do not place your hands or tools near the open inlet during operation for any reason. The powerful suction could easily cause accidental contact with the impeller, which will





cause serious personal injury or damage to the machine. Always keep small animals and children away from open dust collection inlets.

**Avoiding sparks.** Do not allow steel or rocks to strike the impeller—this may produce sparks.

Sparks can smolder in wood dust for a long time before a fire is detected. If you accidentally cut

into wood containing tramp metal (nails, staples, spikes, etc.), immediately turn **off** the dust collector, disconnect it from power, and wait for the impeller to stop—then empty the collection container into an approved airtight metal container.

**Operating location.** To reduce respiratory exposure to fine dust, locate permanently installed dust collectors away from the working area, or in another room that is equipped with a smoke detector. Do not operate the dust collector in rainy or wet locations—exposure to water may create a shock hazard or decrease the life of the machine.

**Static electricity.** Plastic dust lines generate high amounts of static electricity as dust chips pass through them. Although rare, sparks caused by static electricity can cause explosions or fire. To reduce this risk, make sure all dust lines are thoroughly grounded by using a grounding wire.

**Regular cleaning.** Regularly check/empty the collection bags or drum to avoid the buildup of fine dust that can increase the risk of fire. Make sure to regularly clean the surrounding area where the machine is operated—excessive dust buildup on overhead lights, heaters, electrical panels, or other heat sources will increase the risk of fire.

### **CAUTION**

This means that if precautions are not heeded, it may result in minor injury and/or possible machine damage.

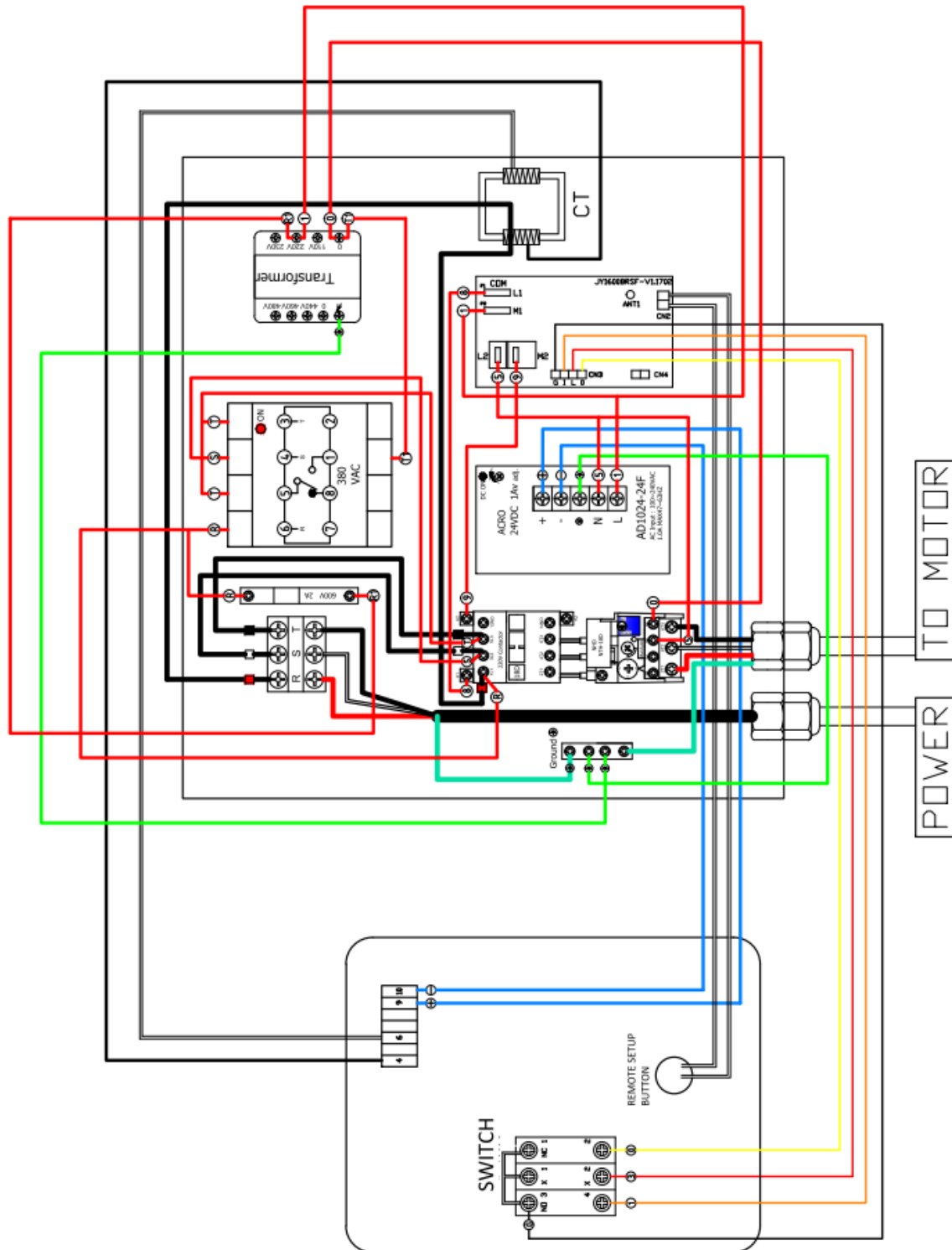
### **WARNING**

This means that if precautions are not heeded, it may result in serious injury or possibly even death.

**SAVE THESE INSTRUCTIONS.**  
**Refer to them often and use them to instruct others.**

## POWER CONNECTIONS

Electric drawing:





## MOTOR SPECIFICATIONS

**⚠ DANGER** Your machine is wired for 220V, 60 HZ alternating current. Before connecting the machine to the power source, make sure the switch is in the "OFF" position.

## GROUNDING INSTRUCTIONS

**⚠ DANGER** THIS MACHINE MUST BE GROUNDED WHILE IN USE TO PROTECT THE OPERATOR FROM ELECTRIC SHOCK.

1. This appliance must be connected to a grounded metal, permanent wiring system; or an equipment-grounding conductor must be run with the circuit conductors and connected to the equipment-grounding terminal or lead on the appliance.

The installer, such as a qualified electrician, cut (or bend over) and insulate the grounding conductor from a field wiring supply cable.

In the event of certain types of malfunctions or breakdowns, grounding provides a path of least resistance for electric current—in order to reduce the risk of electric shock.

Improper connection of the equipment-grounding wire can result in a risk of electric shock. The wire with green insulation (with or without yellow stripes) is the equipment-grounding wire. If repair or replacement of the power cord or plug is necessary, do not connect the equipment-grounding wire to a live (current carrying) terminal.

Check with a qualified electrician or service personnel if you do not understand these grounding requirements, or if you are in doubt about whether the tool is properly grounded. If you ever notice that a cord or plug is damaged or worn, disconnect it from power, and immediately replace it with a new one.

### Full Load amperage Draw

Amp draw at 220V (prewired)..... 14 Amps  
Amp draw at 440V ..... 7 Amps

### Power Supply Circuit Requirements

The power source circuit for your machine must be grounded and rated for the amperage given below. Never replace a circuit breaker on an existing circuit with one of higher amperage without consulting a qualified electrician to ensure compliance with wiring codes. **If you are unsure about the wiring codes in your area or you plan to connect your machine to a shared circuit, consult a qualified electrician.**

Circuit Size (220V)..... 30 Amps  
Circuit Size (440V)..... 20 Amps

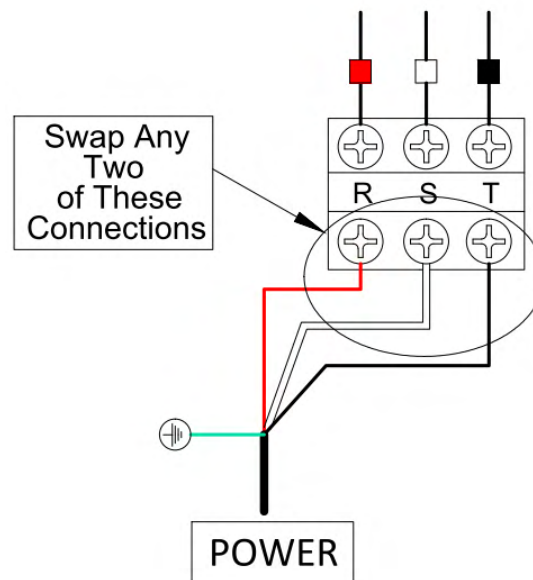


IN ALL CASES, MAKE CERTAIN THE RECEPTACLE IN QUESTION IS PROPERLY GROUNDED. IF YOU ARE NOT SURE, HAVE A QUALIFIED ELECTRICIAN CHECK THE RECEPTACLE.

## 220V Three-Phase Operation

The motor supplied with your machine is a 220 volt motor. It is shipped ready-to-run for 220 volt operation.

This unit is equipped with a phase shortage protector. When you have connected this unit to the power source and push the on button with no response. Open the control box and change the power cord connections. Swap any two of the connections in the figure below.



## 440V Conversion

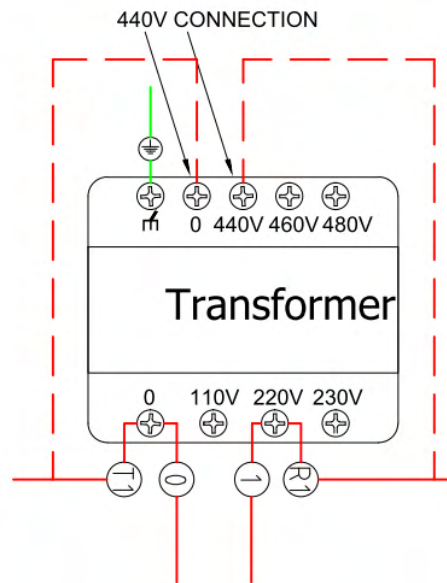
This unit can be rewired for 440V operation. This rewiring job consists of disconnecting this cyclone from the power source, changing the control box and rewiring the motor.

The conversion components have been supplied with this cyclone. Please make sure to use the components supplied.

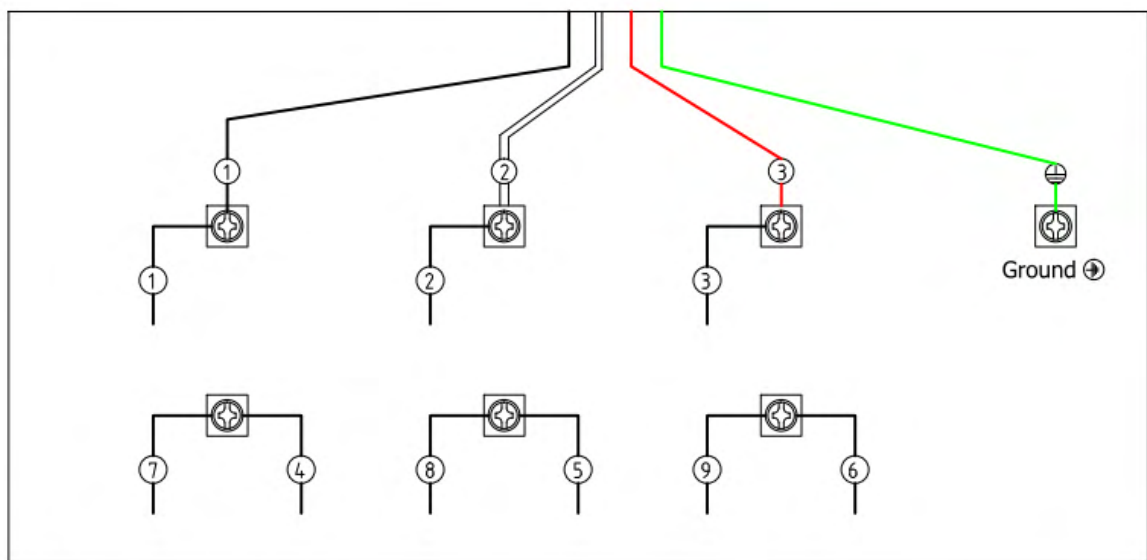
When complete, the rewiring job must be inspected by a qualified electrician before the cyclone is connected to the power source. Follow the steps below and refer to the wiring diagrams.

1. **Disconnect the cyclone from the power source.**
2. **Open the control box and identify the overload relay and the transformer.**

3. Replace the overload relay with the one included in the conversion kit and turn the AMP dial to 7A.
4. Move the R1 wire on the transformer from the 220V terminal to the 440V terminal. Remove the T1 wire from the 0 terminal to the top 0 terminal. (See figure below)



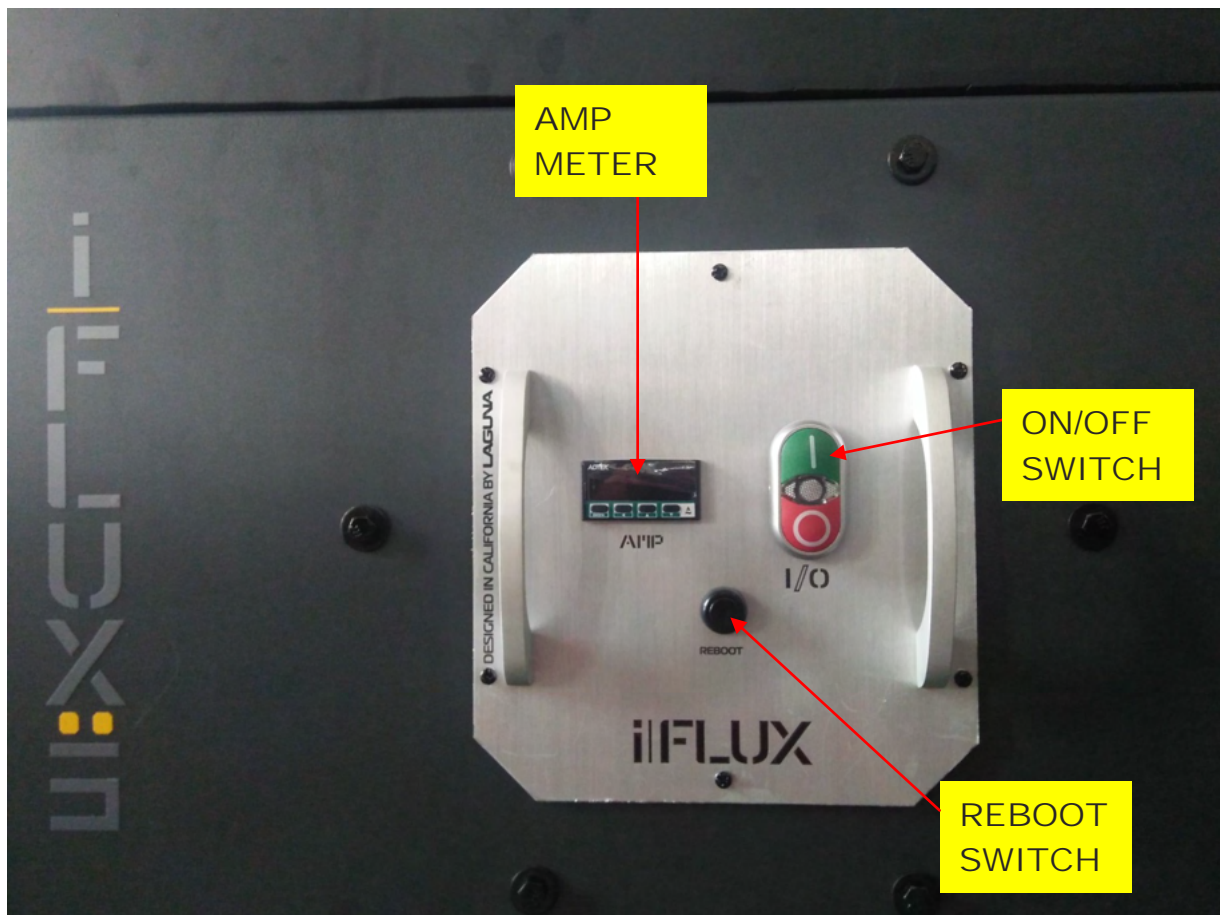
5. Open the motor junction box, rewire the motor terminals for 440V power. (See figure below). Close the motor junction box.



440VAC

# LAGUNA

## CONTROL PANEL DESCRIPTION





## PRODUCT SPECIFICATIONS

Motor Specs:	5 HP
Electrical Specs:	220V/440V / 60Hz / 3PH / 1720 RPM
Running AMP	14A at 220V / 7A at 440V
Air Volume:	3991CFM (cubic feet per minute)
Max. static pressure	5 Inches of water
Fan size	20"
Inlet:	Ø12"
Switch	Control box
Machine weight	606.3 lbs ( 275kgs)
Shipping weight	723.1 lbs ( 328kgs)

<u>Filter Media</u>	filtering area: 26.6m2 (286.3ft2)
Cartridge Filter	1 Micron D.168xH1800mm Filter bags x 28pcs



## GENERAL TOOL ASSEMBLY

### Tools Required

Open end wrench 12 (not supplied)

Open end wrench 14 (not supplied)

Open end wrench 17 (not supplied)



**DANGER**

**SEVERE LACERATION HAZARD. TURN THE UNIT "OFF", DISCONNECT THE UNIT** from the power source and wait 2-

1/2 minutes to allow time for internal rotating components to stop before installing or removing accessories, before adjusting or changing set-ups, clearing clogs or when making repairs. For your own safety, do not connect the machine to the power source until the machine is completely assembled. Please also make sure that you read and understand the entire instruction manual.

### ASSEMBLY TIME ESTIMATE    4 hour to 5 hours



**WARNING**

DISCONNECT THE MACHINE FROM THE POWER SOURCE!

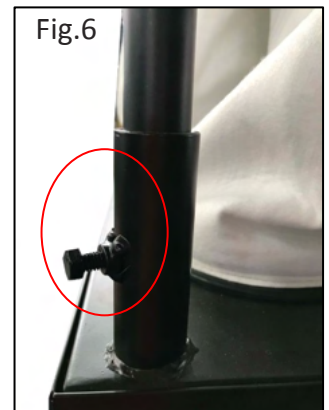
### 1. MANUAL BAG CLEANING SHAKER

Take the housing assembly with the top filter bags; the shaker has already been set in place inside the filter bags. (Fig. 1) You need to lift the upper frame (Fig. 3) and take the triangular tips and bolt onto the upper frame using the hex bolts 3/8", flat washers 3/8" and lock nuts 3/8". (Fig. 2) Do not completely fasten, as you will need it to be movable to clean the filter bags. You will need to do the same for the opposite side.



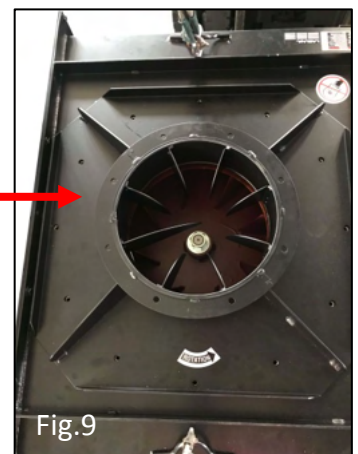
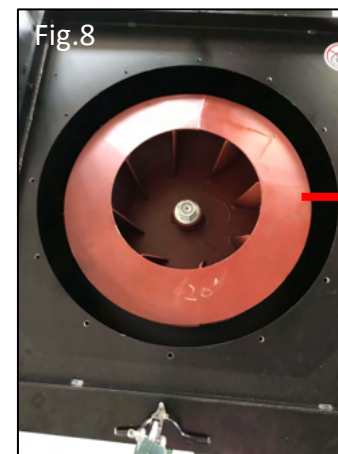
## 2. TOP FILTER BAG SUPPORT RODS

With the help of three other people; you need to lift the upper frame and insert the top filter bag support rods (Fig. 4). After inserting it into the upper frame, make sure to use the hex bolts 5/16" to tighten each rod in place. Each rod needs to be secured in two places, one on the top (Fig. 5) and one at the bottom (Fig. 6). Check each filter bag for any loose connections (Fig. 7) to prevent any dust leakages.



## 3. ASSEMBLE INTAKE FLANGE TO MOTOR HOUSING.

Take the intake flange and assemble to the motor housing using hex bolts 3/8" and flat washers 3/8".



## 4. ASSEMBLE INTAKE ADAPTER TO THE FLANGE

Take the intake adapter with six 5" ports and assemble to the intake flange.



## 5. ASSEMBLE MOTOR HOUSING TO FILTER BAG HOUSING

Use a crane to lift the motor housing up to about 5 feet high. Be careful that the motor housing does not swing around and cause injury. Use a fork lift and place a wooden pallet on the forks that will be used to lift the filter bag housing. Lift to the same height as the motor housing at 5 feet (Fig. 11). Use the hex bolts 3/8", flat washers 3/8" and lock nuts 3/8" to assemble the two together.

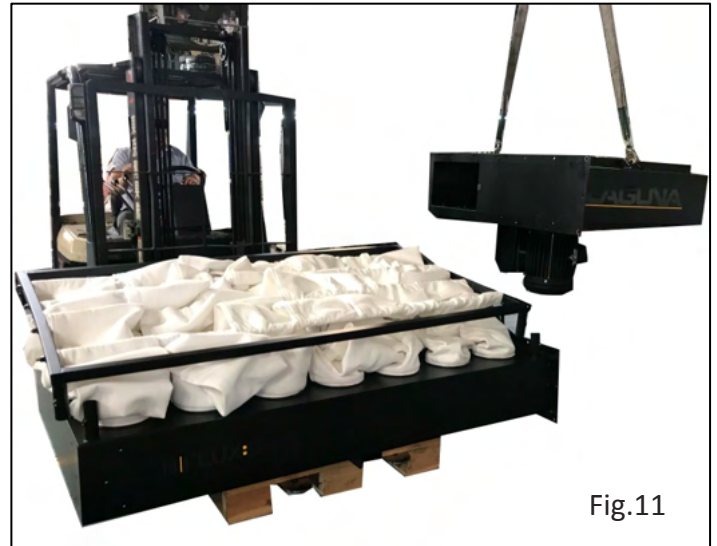


Fig.11

## 6. ASSEMBLE LEG STANDS

Take the four leg stands and assemble to each corner using the hex bolts 3/8" and flat washers 3/8" (Fig. 12 and Fig. 13). It does not matter which After you have completed assembling them, make sure to take the vibration pads (Fig. 14) and set underneath each leg before lowering forklift and crane to set the unit on the ground.



Fig.12



Fig.13



Fig.14

## 7. ASSEMBLE CONTROL PANEL

Take control panel and assemble to the motor housing using hex bolts 3/8", flat washers 3/8" and lock nut 3/8". (Fig.15)

There are three points on the top of the control panel to secure with the hex bolts. And two points on the leg stand to secure with the hex bolts. (Fig. 16)  
Make you tighten and fasten to secure the control panel in place.

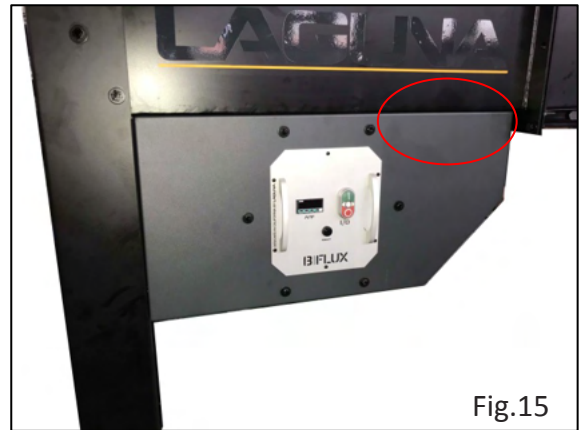


Fig.15



Fig.16

## 8. ASSEMBLE WHEELS ONTO DRUM

Take the eight wheels and assemble to the bottom of each drum (four each) using hex bolts 5/16" and flat washers 5/16". (Fig. 17 and Fig. 18)

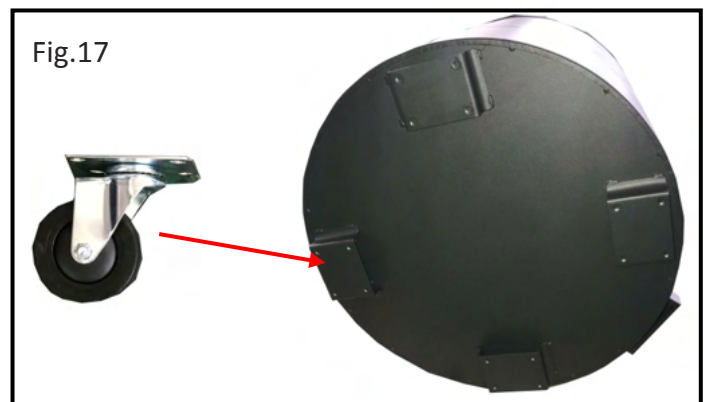


Fig.17



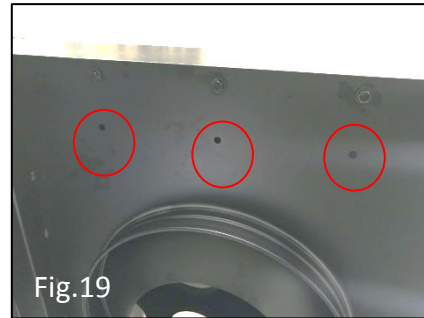
Fig.18



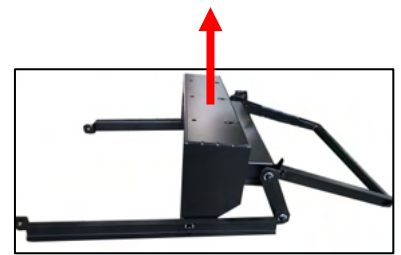
## 9. ASSEMBLE EZ LIFT HANDLE

First remove the three hex bolts 3/8", flat washers 3/8" and lock 3/8" from underneath the lower filter housing. Set aside for use when you assemble the ez lift handle. The inner row of bolts will need to bolt on with one hand/arm reaching in from inside the filter housing. Do the same for the other handle. (Fig. 19 and Fig. 20)

Take the ez lift handle kit, both handles are the same it does not matter which one you take; make sure you have the right side facing upwards to match the bolt holes on the filter housing. (Fig. 21)



Aerial view



Side view



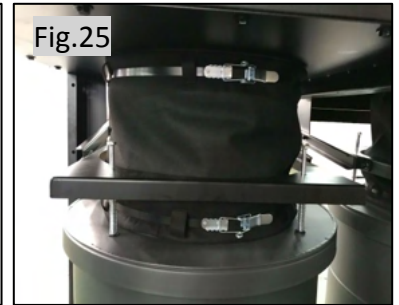
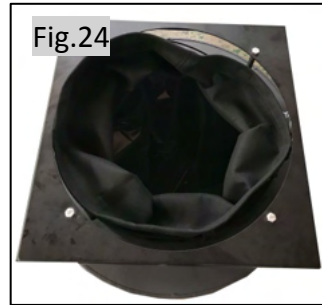
## 10. ASSEMBLE EZ LIFT HANDLE TO DRUM LID

One person must stand in the front where the handle kit is, and hold up the two side bars. Take note that the handle must be in the lower position, push the drum kit underneath the filter housing to make the attachment (Fig. 22). Use the hex bolts 3/8" flat washers and lock nuts 3/8" to assemble the side bar to the drum lid spring support base on each side (Fig. 23). Do the same for the other drum.



## 11. HOOK UP THE CLOTH CONNECTION

Attach the black cloth connection to the rim under the filter housing. Use the band clamp to secure in place. Do the same for the other drum. (Fig.24 and Fig. 25)



## 12. PLASTIC BAG INTO DRUMS

Put the plastic bags into the drums before closing the drums in place.

Make sure to keep the handle closed during operation. When left open, there will be air leakage and will cause the performance of the unit to come down. Furthermore, the dust will become airborne and create a mess in your working environment.



Closed = Handle down position



Open = Handle up position

## ROUTINE INSPECTION

It is a good idea to routinely inspect any quality woodworking tool in order to keep it in optimum condition. This includes inspecting all hardware for tightness, ensuring the filter is clean, and cleaning debris and grime from any surfaces and moving parts.



## TROUBLESHOOTING GUIDE

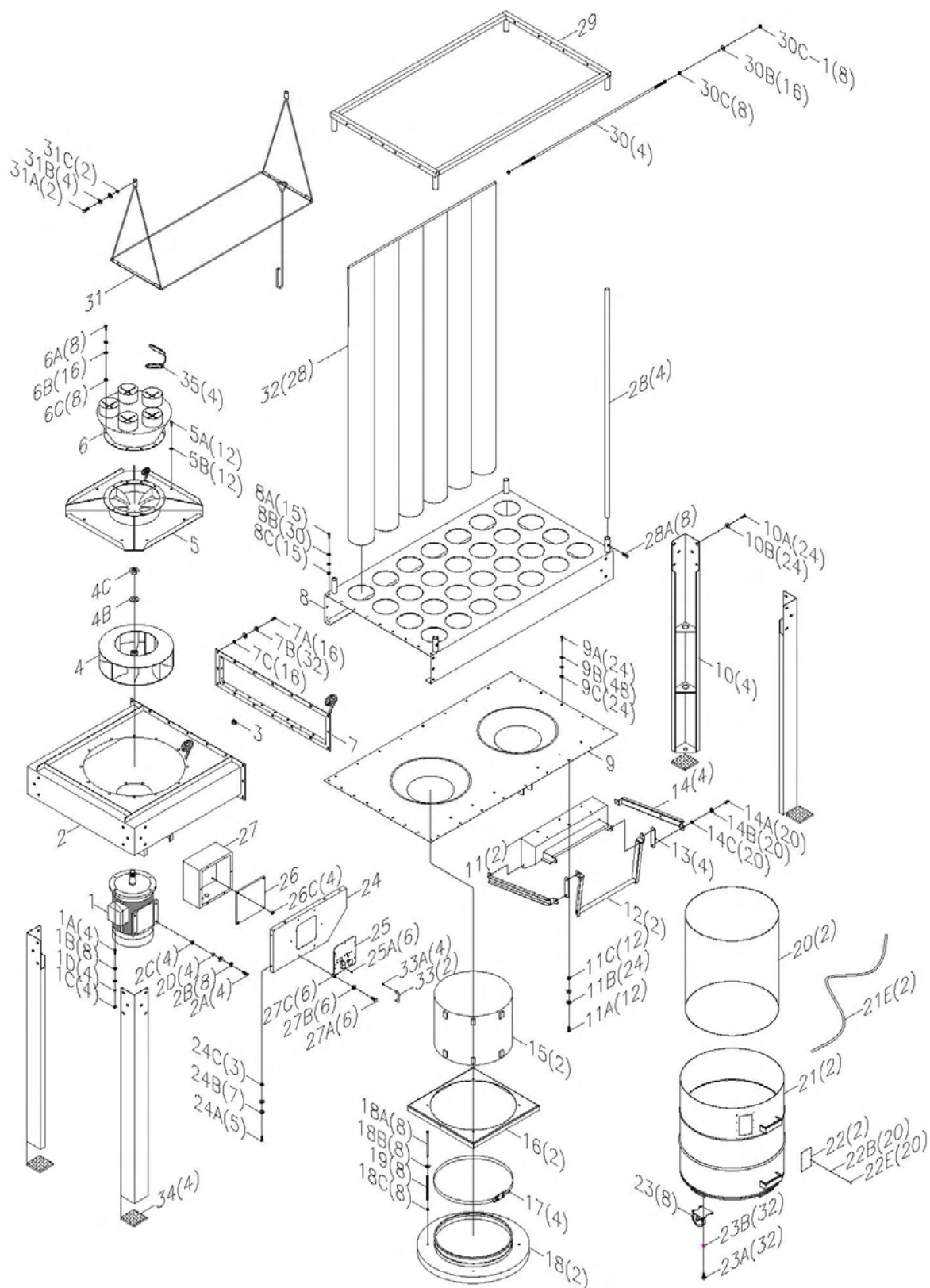
Symptom	Possible Cause	Possible Solution
Machine does not start or a breaker trips.	Power supply switched OFF or is faulty.	Ensure power supply is <b>ON</b> and has the correct voltage.
	Wall fuse/circuit breaker is blown/tripped.	Ensure adequate circuit size; install inlet restrictor, replace weak breaker.
	Incorrectly wired motor connection.	Rewire or call certified service technician or electrician.
	On-board circuit breaker is tripped.	Allow motor to cool, improve ventilation, press reset button.
	Wiring is open/has high resistance.	Check for broken wires or poor connections, repair as necessary.
	Faulty power switch.	Replace switch.
	Motor is at fault.	Test/repair/replace.
Excessive vibration or noise during operation.	Loose component.	Inspect and tighten all bolts/nuts.
	Loose or broken motor mount.	Tighten or replace as needed.
	Motor fan hitting fan cover.	Check fan and cover; replace as needed.
	Bad motor bearings.	Rotate shaft manually, check for grinding or loose shaft, replace bearings if needed.
Loud, repetitive noise, or excessive vibration coming from cyclone	Machine is on uneven surface.	Stabilize on a flat surface.
	Damaged/Unbalanced impeller.	Inspect impeller for dents, bends, loose fins. Replace if needed.
	Loose connections.	Check and re-tighten all fasteners.
	Impeller is loose.	Replace the motor and impeller.
	Motor fan hitting fan cover.	Check fan and cover; replace as needed.





Dust collector does not adequately collect dust or chips; poor performance.	Canister end bag is full.	Empty canister end bag.
	Filter is dirty.	Clean filter.
	Restricted duct line.	Clean inlet adapter.
	Suction route is too long or has too many sharp bends.	Move machine closer to the point of suction, and rerun ducts to eliminate sharp bends.
	Wet lumber is clogging ducts.	Use lumber with less than 20% moisture content.
	Leaks in the duct work or too many open ports.	Repair all duct leaks and close any ports not being used.
	Inadequate velocity in the main suction line.	Increase velocity by opening 1 or 2 more blast gates to different branch lines.
Sawdust being blown into the air from the dust collector	Wrong size ducting/ports used.	Re-size and re-install ducts and fittings.
	Band clamp or end bag is not secure.	Re-install ensuring a tight fit.
	Loose or damaged seals.	Replace seals and gaskets.

## Parts Breakdown





## Part List

Ref No	Part Name	Description	Q'TY
1	MOTOR	5HP/220V/60HZ/SINGLE PHASE	1
1A	HEX BOLT	1/2"*1-3/4"	4
1B	FLAT WASHER	1/2"*OD34*3t	8
1C	HEX NUT	1/2"	4
1D	LOCK WASHER	1/2"	4
2	BLOWER		1
2A	HEX BOLT	3/8"*1-1/2"	4
2B	FLAT WASHER	3/8"*OD28*3t	8
2C	HEX NUT	3/8"	4
2D	LOCK WASHER	3/8"	4
3	PLUG	25*25	1
4	IMPELLER/FAN	23.5"	1
4B	FAN WASHER	1*OD58*3t	1
4C	NUT	1-1/16"	1
5	INTAKE COVER		1
5A	HEX BOLT	3/8"*3/4"	12
5B	FLAT WASHER	3/8"*OD23*2t	12
6	INTAKE ADAPTER	12" BY 5" X 5 PORTS	1
6A	HEX BOLT	3/8"*1"	8
6B	FLAT WASHER	3/8"*OD23*2t	16
6C	LOCK NUT	3/8"	8
7	HOUSING FLANGE		1
7A	HEX BOLT	3/8"*1"	16
7B	FLAT WASHER	3/8"*OD23*2t	32



## Part List

Ref No	Part Name	Description	Q'TY
7C	LOCK NUT	3/8"	16
8	TOP BAG HOUSING		1
8A	HEX BOLT	3/8"*1"	15
8B	FLAT WASHER	3/8"*OD23*2t	30
8C	LOCK NUT	3/8"	15
9	LOWER HOUSING		1
9A	HEX BOLT	3/8"*1"	24
9B	FLAT WASHER	3/8"*OD23*2t	48
9C	LOCK NUT	3/8"	24
10	LEG STAND		4
10A	HEX BOLT	3/8"*3/4"	24
10B	FLAT WASHER	3/8"*OD23*2t	24
11	EZ LIFT HANDLE SUPPORT BASE		2
11A	HEX BOLT	3/8"*1"	12
11B	FLAT WASHER	3/8"*OD23*2t	24
11C	LOCK NUT	3/8"	12
12	EZ LIFT HANDLE		2
13	EZ LIFT SUPPORT BRACE		4
14	EZ LIFT HANDLE SIDE BRACKET		4
14A	THREADED BOLT	3/8"*7/8"	20
14B	FLAT WASHER	3/8"*OD20*1t	20
14C	LOCK NUT	3/8"	20
15	CONNECTION CLOTH	Ø500*380MM	2
16	DRUM LID SPRING SUPPORT BASE		2



## Part List

Ref No	Part Name	Description	Q'TY
17	SPRING CLAMP	Ø500	4
18	DRUM LID		2
18A	THREADED BOLT	3/8"*7"	8
18B	FLAT WASHER	3/8"*OD23*2t	8
18C	LOCK NUT	3/8"	8
19	SPRING		8
20	LOWER PLASTIC BAG	Ø740*1.3M	2
21	64 GALLON DRUM		2
21E	RUBBER GASKET		2
22	WINDOW		2
22B	FLAT WASHER	2.7*OD6*1.5t	20
22E	RIVET	3-2	20
23	CASTER	4"	8
23A	HEX BOLT	5/16"*3/4"	32
23B	FLAT WASHER	5/16"*OD18*2t	32
24	CONTROL BOX SUPPORT PLATE		1
24A	HEX BOLT	3/8"*1"	5
24B	FLAT WASHER	3/8"*OD23*2t	7
24C	LOCK NUT	3/8"	3
25	CONTROL PANEL		1
25A	PHLIP HD BOLT	M4*10	6
26	CAPACITOR SUPPORT PLATE		1
26C	HEX BOLT	1/4"	4
27	CONTROL BOX		1



## Part List

Ref No	Part Name	Description	Q'TY
27A	HEX BOLT	1/4"*1/2"	6
27B	FLAT WASHER	1/4"*OD19*2t	6
27C	LOCK NUT	1/4"	6
28	TOP FILTER BAG SUPPORT ROD		4
28A	HEX BOLT	5/16"*3/4"	8
29	TOP FILTER BAG UPPER FRAME		1
30	BAG HANGER		4
30B	FLAT WASHER	3/8"*OD23*2t	16
30C	LOCK NUT	3/8"	8
30C-1	NUT	3/8"	8
31	SHAKER BAR		1
31A	HEX BOLT	3/8"*2"	2
31B	FLAT WASHER	3/8"*OD23*2t	4
31C	LOCK NUT	3/8"	2
32	TOP FILTER BAG	1 MICRON Ø168MM*1.8M	28
33	HANDLE	CONTROL PANEL	2
33A	PHILIP HD BOLT	M4*6	4
34	VIBRATION ABSORBENT PAD	1/2*5*7	4
35	CAP	5"	4



## NOTE





## NOTE

# LAGUNA

---

## NOTE

# **LAGUNA**

2072 Alton Parkway. Irvine, CA 92606  
Ph: 800.234.1976 | [www.lagunatools.com](http://www.lagunatools.com)

Laguna Tools is not responsible for errors or omissions.  
Specifications subject to change. Machines may be shown with optional accessories.

© 2016, Laguna Tools, Inc. LAGUNA® and the LAGUNA Logo® are the  
registered trademarks of Laguna Tools, Inc. All rights reserved.