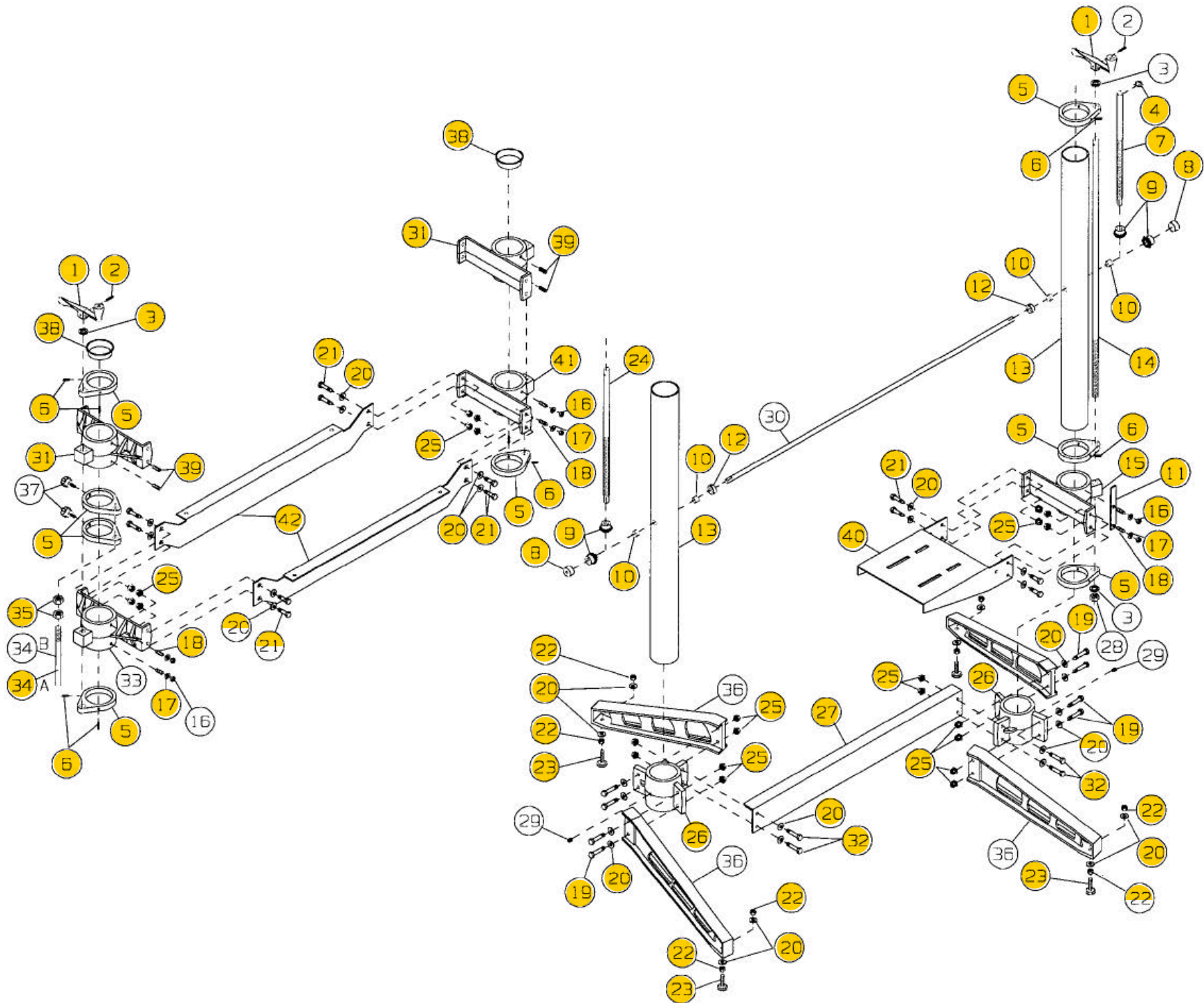


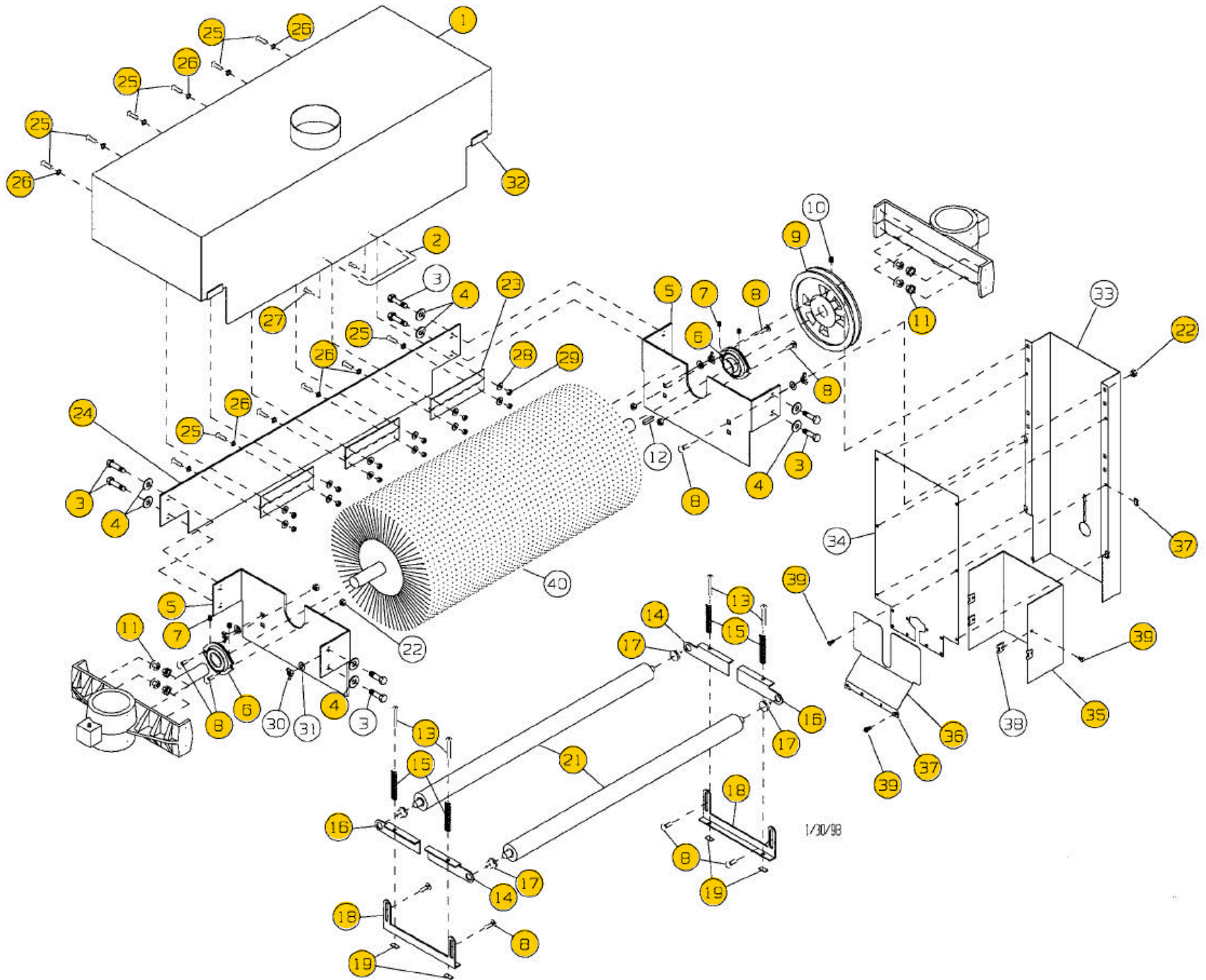
SUPERBRUSH STAND ASSEMBLY



SUPERBRUSH STAND ASSEMBLY PARTS LIST

Ref. Number	Description	Part Number			Qty./ Unit
		SB24	Both Models	SB36	
1	HANDLE, SWIVEL ASSY		31-0020		2
2	PIN, ROLL 3/16X1		20-0772		2
3	WASHER, 5/8 I.D. OILITE		50-3080		4
4	RING, 5/8 RETAINING		20-0752		1
5	SUPPORT, ADJUSTING SCREW		30-1112		8
6	SCREW, 1/4-20x1/2 SOCKET HEAD SET		10-2804		12
7	SCREW, INBOARD HEIGHT ADJ. FOLLOW		30-1211HR		1
8	CAP, 1" PLASTIC		80-4013		2
9	GEAR, MITER		20-1101		4
10	BUSHING, 1/2 I.D. OILITE ROUND		50-3107		4
11A	RPM, BRACKET		40-0670		1
11B	RPM, DECAL (NOT SHOWN)		94-1674		1
12	COLLAR, 1/2 I.D. SHAFT		20-1103		2
13	TUBE, COLUMN		30-3044		2
14	SCREW, RPM, MOTOR		30-1209		1
15	MOUNT, MOTOR		30-5103		1
16	NUT, 5/16-18 HEX		12-0003		6
17	WASHER, 5/16 SAE		11-0206		8
18	SCREW, 5/16-18x3/4 BRASS TIPPED SET		10-9906		6
19	BOLT, 3/8-16x1-1/2 HEX HEAD		10-9207		8
20	WASHER, 5/16 WROUGHT		11-9103		20
21	BOLT, 3/8-16x1 HEX HEAD		10-9205		12
22	NUT, 3/8-16 HEX		12-0005		8
23	LEVELING FOOT		20-0655		4
24	SCREW, OUTBOARD HEIGHT ADJ.		30-1212HR		1
25	NUT, 3/8-16 FLANGE LOCK		12-0209		24
26	BASE, COLUMN		30-1101		2
27	BASE SUPPORT BRACKET	40-0230		40-4241	1
28	NUT, 5/8-11HEAVY HEX LOCK		12-8015		1
29	SCREW, 1/2-13x1/2 SOCKET HEAD SET		10-8905		2
30	ROD, TRANSFER	30-1213		30-3117	1
31	SUPPORT BRUSH		30-5206		2
32	BOLT, 3/8-16x1 1/4 HEX		10-9206		4
33	SUPPORT, OUTBOARD TABLE		30-5204		1
34A	DEPTH GAUGE ROD		30-1260HR	ROD	1
34B	DECAL, SCALE		94-1654	SCALE	1
35	NUT, 9/16-12 HEX		12-0011		2
36	LEG		30-1102		4
37	KNOB, LOCKING W/ SET SCREW		81-3132		2
38	CAP, 3Y PLASTIC COLUMN TUBE		80-4015		2
39	SCREW, 5/16-18x3/8 SOCKET HEAD SET		10-2903		4
40	MOTOR MOUNT		40-0106		1
41	SUPPORT, INBOARD TABLE		30-5205		1
42	BRACKET, TABLE MOUNT	40-0025		40-0037	2
	CLIP, FRAME (NOT SHOWN)		72-6208		1
	BUSHING, 1/2 I.D. OILITE ROUND (NOT SHOWN)		50-3110		2

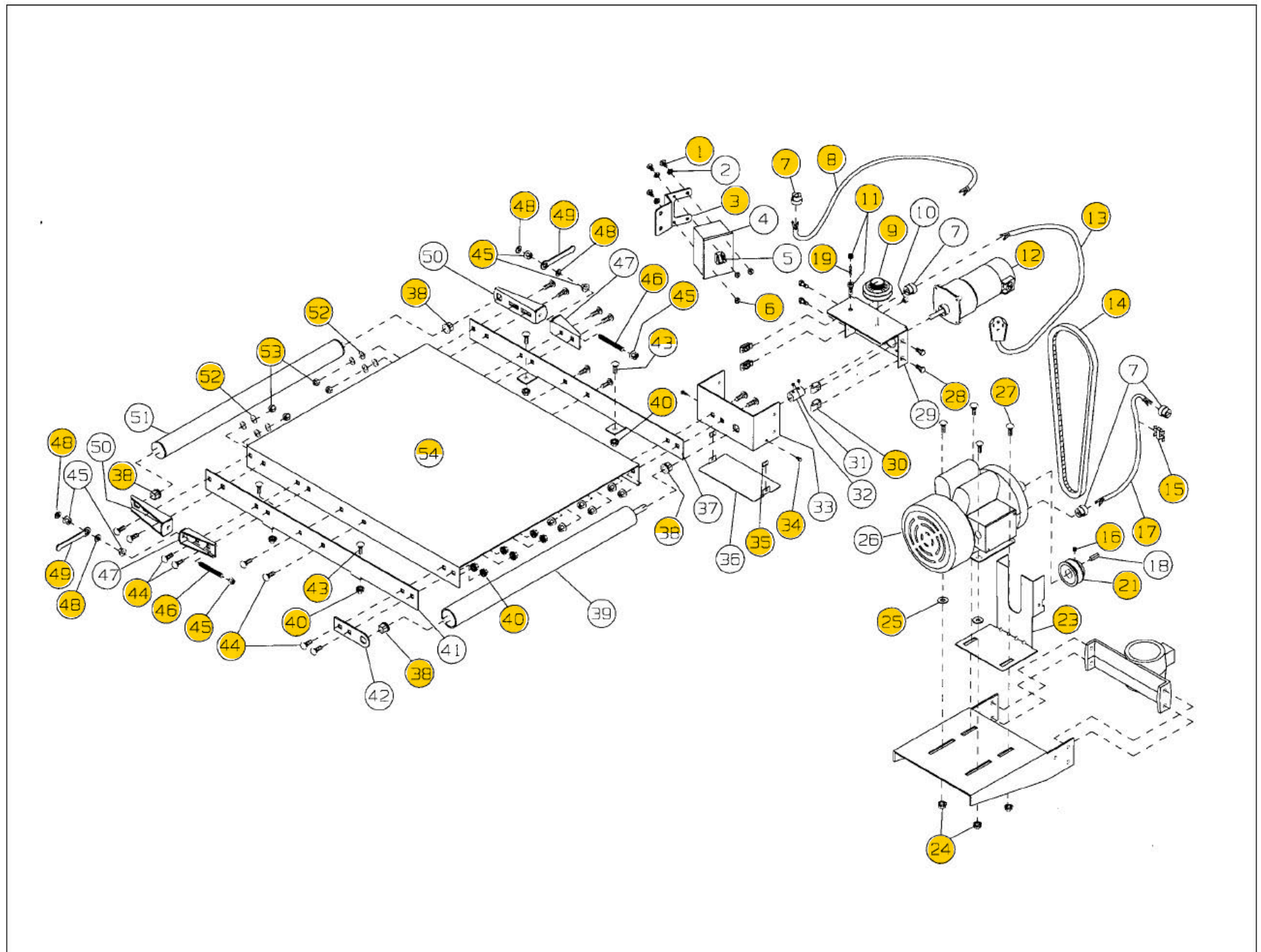
SUPERBRUSH HEAD ASSEMBLY



SUPERBRUSH HEAD ASSEMBLY PARTS LIST

Ref. Number	Description	Part Number			Qty./ Unit
		SB24	Both Models	SB36	
1	DUST COVER	40-0655		40-3655	1
2	HANDLE, DUST COVER		80-2841		1
3	BOLT, HEX 3/8-16X1		10-9205		8
4	WASHER, 5/16 SAE		11-0206		8
5	BRACKET, BEARING MOUNTING (see Fig. 25)		40-0613		2
6	BEARING		50-3086		2
7	SCREW, 1/4-20x1/4 SOCKET HEAD SET		10-8802		4
8	BOLT, 5/16-18x3/4 CARRIAGE		10-1203		8
9	PULLEY, 7" (TYPICAL)		50-0701		1
10	SCREW, 5/16-18x3/8 SOCKET HEAD SET		10-8903		1
11	NUT, 3/8-16 FLANGE LOCK		12-0209		8
12	KEY STOCK, 1/4x1/4x1 1/4		20-0764		1
13	SCREW, 1/4-20x1 3/4 ROUND HEAD MACHINE		10-3213		4
14	BRACKET, LEFT SUSPENSION		40-0323		2
15	SPRING, TENSION ROLLER		20-3284		4
16	BRACKET, RIGHT SUSPENSION		40-0326		2
17	BUSHING, 1/2 ID OILITE ROUND		50-3107		4
18	BRACKET, SUSPENSION BASE		40-0322		2
19	NUT, 1/4-20 RETAINING		20-1153		4
21	ROLLER TENSION	30-1218		30-3218	2
22	NUT, 5/16-18 FLANGE LOCK		12-0207		6
23	HINGE		40-0225		3
24	BRACKET, DUST COVER MOUNTING	40-0605		40-3605	1
25	SCREW, 1/4-20x1/2 ROUND HEAD MACH		10-3205		12
26	WASHER, 1/4 INTERNAL TOOTH LOCK		11-0504		12
27	SCREW, 8x1/2 SELF TAPPING		10-3904		2
28	WASHER, 1/4 SAE		11-0205		12
29	NUT, 1/4-20 HEX		12-0001		12
30	NUT 5/16-18 WING		12-9050		4
31	WASHER, 5/16 INTERNAL TOOTH LOCK		11-0505		4
32	BUMPER, DUST COVER		80-1065		2
33	GUARD, BELT COVER		40-0009		1
34	GUARD, BELT, PLATE		40-0010		1
35	GUARD, BELT LOWER		40-0011		1
36	GUARD, BELT, ANGLED		40-0012		1
37	NUT, RETAINING		20-1155		6
38	NUT, RETAINING		20-1157		4
39	SCREW, 10-24x3/8 SLOTTED HEX HEAD		10-3803		10
40	BRUSH		See page 35		1

SUPERBRUSH CONVEYOR & MOTOR



SUPERBRUSH CONVEYOR & MOTOR PARTS LIST

Ref. Number	Description	Part Number			Qty./ Unit
		SB24	Both Models	SB36	
1	1/4"-20x1/2" ROUND HEAD MACH SCREW		10-3205		3
2	WASHER, 1/4 INTERNAL TOOTH LOCK		11-0504		3
3	SWITCH BRACKET		40-5005		1
4	SWITCH BOX		72-5400-2		1
5	ON/OFF SWITCH		72-5400-1		1
6	1/4"-20 HEX NUT		12-0001		3
7	LARGE STRAIN RELIEF		72-6104		4
8	CORD SET, SINGLE PHASE, 32"		72-5315		1
	CORD SET, THREE PHASE, 32"		72-5305		1
9	CONTROLLER, 180 V, VARIABLE SPEED INCLUDING KNOB, NUT AND DIAL PLATE		72-1260		1
10	SMALL STRAIN RELIEF		72-6102		1
11	FUSE HOLDER		72-6202		1
12	180-VOLT GEAR MOTOR		71-1171		1
13	CORD SET, MAIN W/PLUG, SINGLE PHASE		72-5430		1
	CORD SET, MAIN, NO PLUG, THREE PHASE		72-5305		1
14	V-BELT		50-2029		1
15	RETAINING CLIP		72-6210		1
16	5/16"-18x3/8" SOCKET HEAD SET SCREW		10-2903		1
17	CORD SET, SINGLE PHASE, 66"		72-5315		1
	CORD SET, THREE PHASE, 66"		72-5305		1
18	KEY STOCK, 1/4x1 3/4		N/A		1
19	FUSE, 3/4 AMP		72-6201		1
21	PULLEY, DRIVE, VARIABLE SPEED		50-0704		1
22	#10-24 RETAINING NUT		20-1157		2
23	LOWER INNER BELT GUARD		40-1000		1
24	5/16"-18 FLANGED LOCK NUT		12-0207		4
25	3/8" WROUGHT WASHER		11-0104		2
26	MOTOR, 5 HP. TEFC, SINGLE PHASE		71-0502		1
	MOTOR, 5 HP. TEFC, THREE PHASE		71-1503		1
27	5/16"-18x3/4" CARRIAGE BOLT		10-1203		4
28	5/16"-18x1/2" HEX HEAD BOLT		10-9101		4
29	CONTROL HOUSING		40-5012		1
30	5/16"-18 RETAINING NUT		20-1159		4
31	SCREW, 5/16-18x1/4 SOCKET HEAD SET SCREW		10-8902		2
32	COUPLING (CONVEYOR)		30-3102		1
33	CONTROL BOX BASE BRACKET		40-4115		1
34	#10-24x3/8" SLOTTED HEX HEAD SCREW		10-3803		2
35	#10-24 RETAINING NUT		20-1155		2
36	BOTTOM COVER		40-4116		1
37	RIGHT SIDE RAIL		40-4106		1

SUPERBRUSH CONVEYOR & MOTOR PARTS LIST (Con't.)

Ref. Number	Description	Part Number			Qty./Unit
		SB24	Both Models	SB36	
38	1/2" I.D. SQUARE OILITE BUSHING		50-3109		4
39	RUBBER COVERED DRIVE ROLLER	30-3106		30-3107	1
40	3/8" FLANGED LOCK NUT		12-0209		16
41	LEFT SIDE RAIL		40-4105		1
42	ROLLER SUPPORT BRACKET		40-4109		1
43	3/8"-16x3/4" CARRIAGE BOLT		10-1301		4
44	3/8"-16x1" CARRIAGE BOLT		10-1302		16
45	5/16"-24 FLANGE NUT		12-0308		6
46	5/15"-24x3" STUD		30-1306		2
47	TAKE-UP BASE BRACKET		40-4107		2
48	5/16" SAE WASHER		11-0206		4
49	WRENCH		40-0375		2
50	TAKEUP SLIDE		40-4108		2
51	DRIVEN ROLLER	30-3103		30-3104	1
52	3/8" SPRING WASHER		20-1165		4
53	3/8"-16 NYLON INSERT LOCK NUT		12-8005		4
54	CONVEYOR BED	40-4101		40-4201	1
55	CONVEYOR BELT (NOT SHOWN)	61-1004		61-1007	1