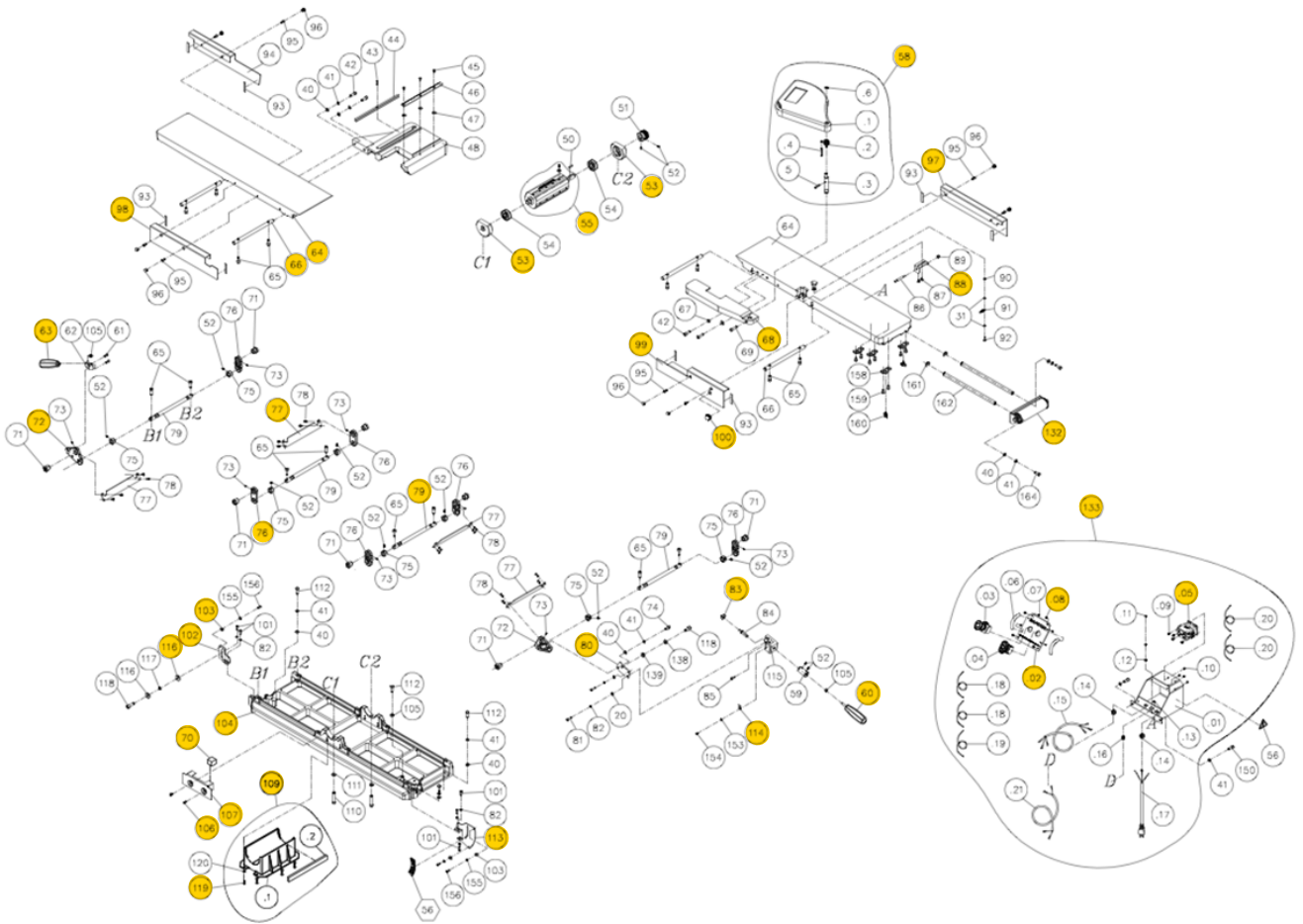
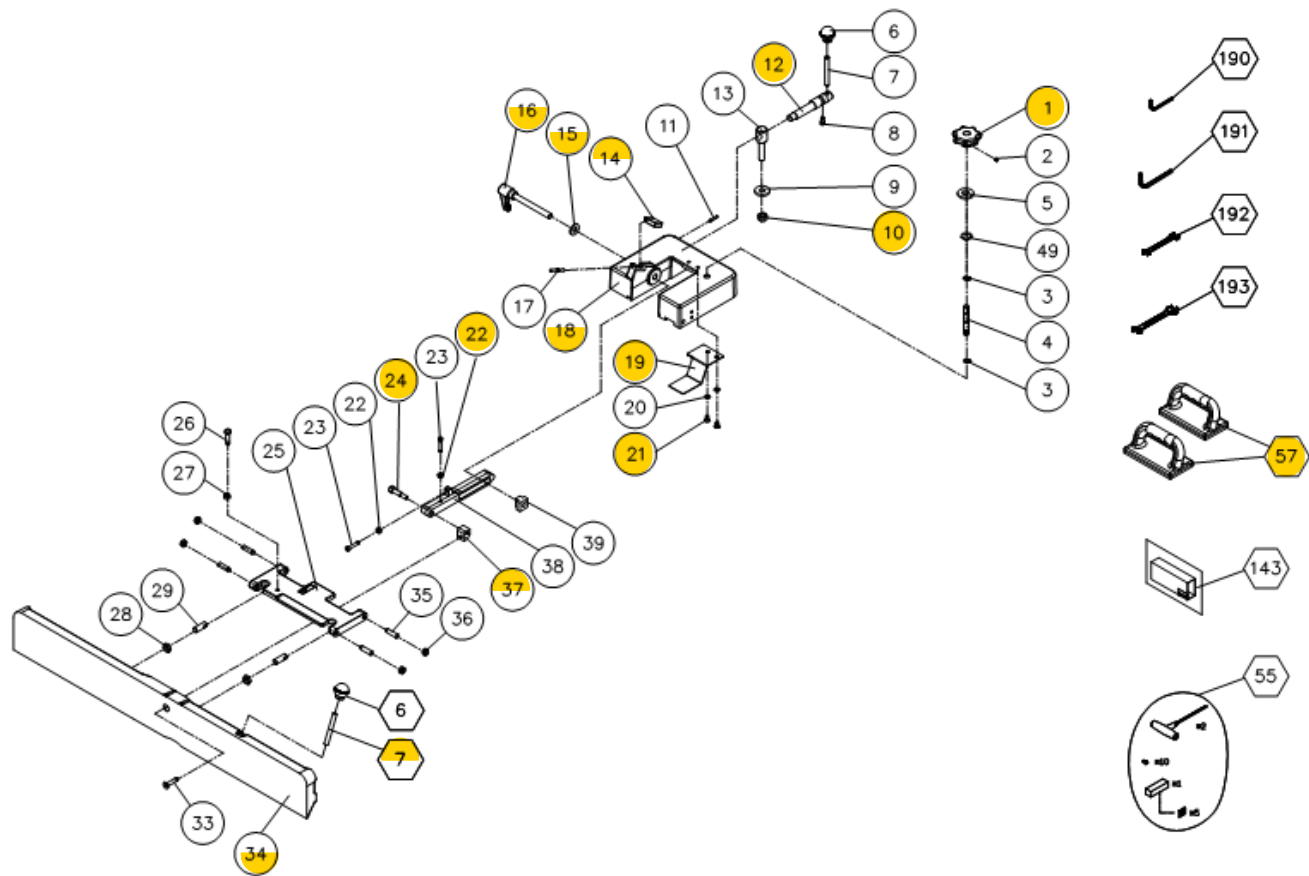


# JX8 Quadtec: I Parts

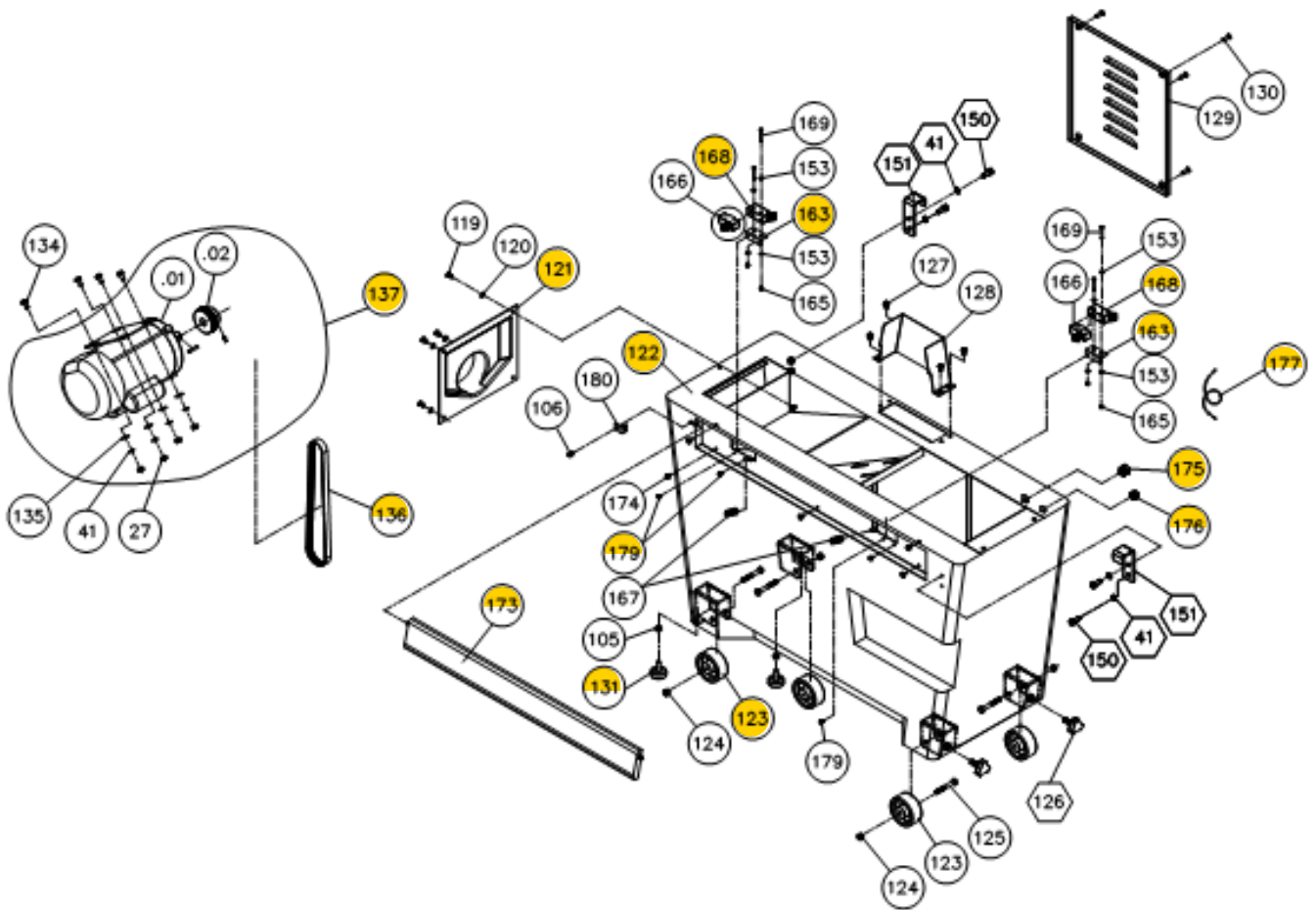
## Cutterhead & Drivetrain



# Fence



# Stand & Motor



REF NO	PART NUMBER	DESCRIPTION	SPECIFICATION	QTY
1	240080-904	HANDWHEEL		1
2	001902-109	SET LOCK SCREW	M6-1.0X6	1
3	010003-000	RETAINING RING	STW-12	2
4	381336-901	LEAD SCREW		1
5	006001-087	FLAT WASHER	12-25X1.5	1
6	250372-615	FENCE TILT KNOB		2
7	360038-901	HANDLE ROD		2
8	003103-102	CAP SCREW	1/4"-20X1/2"	1
9	172285-905	FLAT WASHER	13-35X5.0	1
10	009104-200	LOCK NUT	1/2"-12 (19BX15H)	1
11	011002-106	SPRING PIN	4X25	1
12	360074-901	CRANKSHAFT		1
13	360075-901	CLAMPING SCREW		1
14	130019-903	STOP PLATE		1
15	006001-091	FLAT WASHER	13-28X3.0	1
16	230035-000	UNIVERSAL HANDLE		1
17	360078-000	PIN		1

REF NO	PART NUMBER	DESCRIPTION	SPECIFICATION	QTY
18	051332-196	FENCE BRACKET - UPPER		1
19	170127-901	SAFETY PLATE		1
20	006001-032	FLAT WASHER	6.6-13X1.0	4
21	003403-102	FLAT HEAD PHILLIPS SCREW	1/4"-20X1/2"	2
22	009004-200	HEX NUT	1/4-20 (11BX5.5H)	2
23	003103-104	CAP SCREW	1/4"-20X1-1/4"	2
24	290007-901	BOLT		1
25	051313-196	TILT PLATE		1
26	003003-106	HEX SCREW	5/16"-18X1-1/4"	1
27	009005-200	HEX NUT	5/16-18 (12.7BX6.75H)	3
28	009010-100	HEX NUT	1/2"-20 (19.05BX6.35H)	2
29	360676-901	STUD PIVOT		2
31	006001-009	FLAT WASHER	5.2-10X1.0	2
33	003602-101	FLAT HEAD HEX SCREW	5/16"-18X1-1/2"	1
34	051310-196	FENCE		1
35	230015-901	BOLT		4
36	009022-100	HEX NUT	3/8"-16 (13.83BX6.68H)	4
37	130008-903	CONNECT BLOCK		1
38	051334-196	FIXING ROD		1
39	130383-903	SQUARE NUT	1/2"-12	1
40	006001-049	FLAT WASHER	8.5-16X2.0	8
41	006305-100	LOCK WASHER	8.2-13.7	12
42	000104-108	CAP SCREW	M8-1.25X25	4
43	011002-105	SPRING PIN	4X20	1
44	380082-902	KEY		1
45	000701-103	FLAT HEAD HEX SCREW	M5-0.8X12	3
46	171841-902	LEAD SCREW		1
41	006305-100	LOCK WASHER	8.2-13.7	4
47	006001-034	FLAT WASHER	6.7-16X2.0	3
48	051355-196	FENCE BRACKET		1
49	006722-100	WAVE WASHER	WW-19 (19.05X26)	1
50	012003-008	KEY	5X5X22	1
51	381409-902	PULLEY	7 SLOTS	1
52	001902-102	SET LOCK SCREW	M6-1.0X8	11
53	050095-901	BEARING HOUSING		2
54	030208-002	BALL BEARING	6204	2
55	925137-001	SEGMENTED CUTTERHEAD	4 SLOTS	1
	038201-101	TORX SCREW	#10-32X1/2"	20
	040710-000	TORX WRENCH	T-25	1
	925135-001	KNIFE INSERT	10PCS/BOX	12
57	250035-629	PUSH BLOCK		2
58	924821-001	CUTTERHEAD GUARD ASSEMBLY		1

REF NO	PART NUMBER	DESCRIPTION	SPECIFICATION	QTY
59	381428-902	BUSHING		1
60	230191-000	MITER GAUGE HANDLE		1
61	000102-104	CAP SCREW	M5-0.8X12	2
62	174786-904	PLATE		1
63	230141-615	HANDLE		1
64	051460-197	TABLE	LAGUNA	2
65	002601-107	CAP LOCK SCREW	M8-1.25X25	16
66	361239-902	SUPPORT SHAFT		4
67	006001-163	FLAT WASHER	8.5-19X3	2
68	051358-197	RABBET ARM		1
69	003104-104	CAP SCREW	5/16"-18X1"	1
70	200105-615	SPONGE	30X30X22 (LXWXH)	1
71	130350-903	BUSHING		8
72	130351-903	CONNECTING ROD PLATE		2
73	001901-102	SET LOCK SCREW	M5-0.8X8	8
74	000104-104	CAP SCREW	M8-1.25X16	1
75	361241-902	BUSHING		8
76	130352-903	ROD PLATE		6
77	174604-000	FIXING ROD PLATE		4
78	002603-101	CAP LOCK SCREW	M5-0.8X10	16
79	361326-902	ROD		4
80	174784-904	FIXING PLATE		1
81	000103-108	CAP SCREW	M6-1.0X25	2
82	006303-100	LOCK WASHER	6.5-10.5	7
83	130393-903	INCLINED BLOCK		1
84	361370-902	HANDLE SHAFT BOLT		1
85	002602-101	CAP LOCK SCREW	M6-1.0X12	1
86	361327-902	HANDLE SHAFT BOLT		1
87	290028-901	SHOULDER SCREW		2
88	174603-902	FIXING PLATE		1
89	009103-100	LOCK NUT	1/4-20 (11BX8H)	1
90	008004-100	HEX NUT	M5-0.8 (8BX4H)	1
91	280082-000	TENSION SPRING		1
92	000102-116	CAP SCREW	M5-0.8X15	1
93	200024-615	PACKING		8
94	174600-196	REAR BASE COVER - L		1
95	000103-102	CAP SCREW	M6-1.0X10	8
96	042505-000	CORD PLUG	HP-13	8
97	174601-196	REAR BASE COVER - R		1
98	174599-196	FRONT COVER - L		1
99	174781-196	FRONT COVER - R		1
100	230156-615	KNOB PLUNGER	22X1/4"-20	1

REF NO	PART NUMBER	DESCRIPTION	SPECIFICATION	QTY
101	000103-105	CAP SCREW	M6-1.0X15	5
102	174787-904	LOCKING PLATE - L		1
103	174785-904	FIXING PLATE		3
104	051441-196	BASE		1
105	008006-100	HEX NUT	M8-1.25 (13BX6.5H)	5
106	000801-101	ROUND HEAD HEX SCREW	M6-1.0X10	3
107	174597-196	CUTTERHEAD FRONT COVER		1
109	924665-001	CHIP HOOD ASSEMBLY		1
110	003111-301	CAP SCREW	3/8-24X2"	2
111	006306-100	LOCK WASHER	9.8-17.8	2
112	000003-105	HEX SCREW	M8-1.25X25	4
113	174783-904	LOCKING PLATE - R		1
114	174782-156	POINTER		1
115	310548-911	FIXED BLOCK		1
116	006003-080	FLAT WASHER	10.5-23X3.0	2
117	006703-100	WAVE WASHER	WW-10	1
118	000105-101	CAP SCREW	M10-1.5X20	2
119	000304-203	PAN HEAD SCREW	M6-1.0X12	8
120	006002-032	FLAT WASHER	6.6-13X1.0	8
121	250052-615	DUST CHUTE		1
122	174937-196	STAND		1
123	250399-615	WHEEL		4
124	008306-100	LOCK NUT	M8-1.25 (13BX9H)	4
125	000003-313	HEX SCREW	M8-1.25X60	4
126	230388-000	TRIANGLE KNOB		2
127	001603-102	ROUND HEAD PHILLIPS SCREW W/WASHER	M6-1.0X10/6-13.2X1.0	4
128	174595-196	PULLEY COVER		1
129	170445-196	COVER		1
130	000403-104	FLAT HEAD PHILLIPS SCREW	M6-1.0X20	4
131	230049-000	FOOT		2
132	925094-001	EXTENSION ROLLER ASSEMBLY	8"	1
133	950867-001	CONTROL BOX ASSEMBLY	110-120V	1
133.1	174936-000	CONTROL BOX		1
133.2	575554-000	SWITCH PLATE		1
133.3	491153-000	EMERGENCY STOP SWITCH	NPB22-H01R	1
133.1	491223-000	POWER SWITCH	M22DP-SF11WB	1
133.5	491186-000	CONTACTOR	SF20C2A (110-120V)	1
133.6	300117-909	SWITCH GUARD		2
133.7	000301-101	PAN HEAD SCREW	M3-0.5X6	4
133.8	000804-101	ROUND HEAD HEX SCREW	M5-0.8X8	4

REF NO	PART NUMBER	DESCRIPTION	SPECIFICATION	QTY
133.9	001601-101	ROUND HEAD PHILLIPS SCREW W/WASHER	M4-0.7X8/4-10X0.8	4
133.10	008103-100	HEX CUP NUT	M4-0.7	4
133.11	000302-101	PAN HEAD SCREW	M4-0.7X6	1
133.12	006501-100	INT. TOOTH WASHER	4.3-8.5 (BW-4)	1
133.13	570695-000	GROUNDING LABEL		1
133.14	020005-000	STRAIN RELIEF	SB8R-3	2
133.15	473003-067	CONNECT CORD	SJT 14AWG/3C/1400MM	1
133.16	020008-000	STRAIN RELIEF	SBR5-2	1
133.17	453011-048	POWER CORD	SJT 14AWG/3C/3400MM W/PLUG	1
133.18	471001-001	CONNECT CORD	18AWG/1C/85MM	2
133.19	471037-109	CONNECT CORD	18AWG/1C/200MM	1
133.20	471037-110	CONNECT CORD	18AWG/1C/200MM	2
133.21	472001-054	CONNECT CORD	SJT 18AWG*2C*1500MM	1
134	003801-107	CARRIAGE BOLT	5/16-18X3/4"	4
135	006001-053	FLAT WASHER	8.5-19X2.0	4
136	014361-000	POLY-V-BELT	300J-7	1
137	901336-001	MOTOR ASSEMBLY	1.75HP/115V/230V/60HZ/1 PH PREWIRED 115V	1
1	960044-001	MOTOR ASSEMBLY	1.75HP/115V/230V/60HZ/1 PH	1
2	381410-902	MOTOR PULLEY	7 SLOTS	1
3	001902-102	SET LOCK SCREW	M6-1.0X8	1
138	006307-100	LOCK WASHER	10.2-18.5	1
139	006001-069	FLAT WASHER	10-20X3.0	1
150	000104-106	CAP SCREW	M8-1.25X20	2
150	000104-106	CAP SCREW	M8-1.25X20	4
151	174695-902	HOOK		2
153	006001-001	FLAT WASHER	4.3-10X1.0	9
154	000302-101	PAN HEAD SCREW	M4-0.7X6	1
155	006502-100	INT. TOOTH WASHER	5.3-10 (BW-5)	3
156	000102-103	CAP SCREW	M5-0.8X10	6
158	130405-903	BUSHING BLOCK		4
159	000103-103	CAP SCREW	M6-1.0X12	8
160	250705-000	WING SCREW	M6-1.0	2
161	010208-000	RETAINING RING	ETW-12	2
162	361435-902	EXTENSION ROD		2
163	174932-000	LIMIT SWITCH BRACKET		2
164	000003-104	HEX SCREW	M8-1.25X20	2
165	008301-200	LOCK NUT	M4-0.7 (7BX5H)	4
166	491101-000	LIMIT SWITCH	MJ2-1307	2
167	280274-000	SPRING		2

REF NO	PART NUMBER	DESCRIPTION	SPECIFICATION	QTY
168	490229-615	LIMIT SWITCH COVER	KSSCB-2	2
169	000101-110	CAP SCREW	M4-0.7X30	4
173	174939-156	EMERGENCY STOP PLATE		1
174	340007-615	BLOCK		5
175	020005-000	STRAIN RELIEF	SB8R-3	1
176	020008-000	STRAIN RELIEF	SBR5-2	1
177	471037-103	CONNECT CORD	18AWG/1C/700MM	1
179	002401-101	ROUND HEAD PHILLIPS LOCK SCREW W/WASHER	M4-0.7X12/4-10X0.8	4
180	174955-904	LIMITED PLATE		1
190	040003-000	HEX WRENCH	3MM	1
191	040006-000	HEX WRENCH	6MM	1
192	040201-000	OPEN WRENCH	8/10MM	1
193	040203-000	OPEN WRENCH	11/13MM	1